

OMRF 7T/30



BRUKER spect

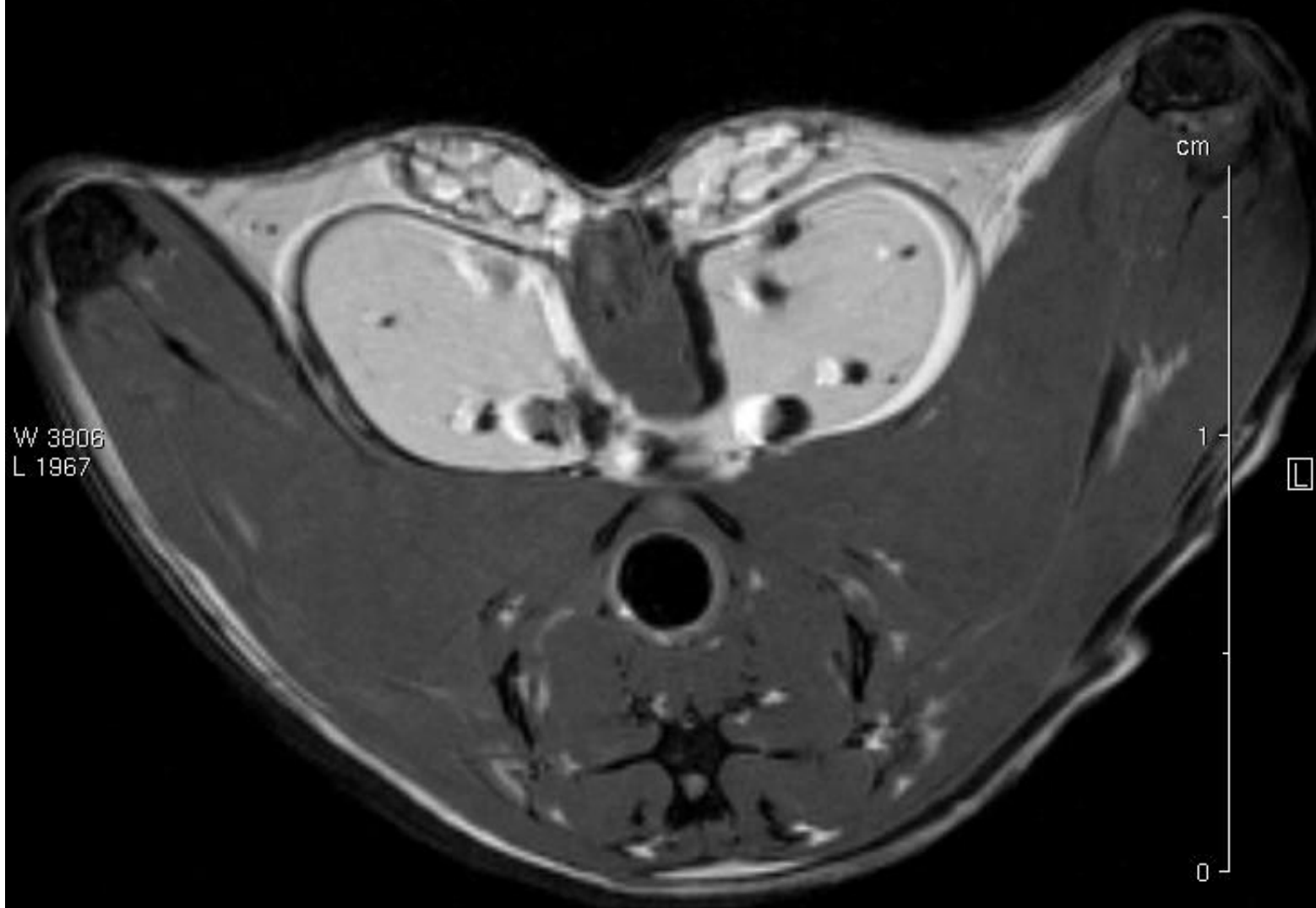
RS_7

Date: 1 Aug 2005

RS_7

Time: 16:50

*
M 5.0 kg



W 3806
L 1967

Scan: 3
Slice: 1/17
Echo: 1/2
MSME (pvm)
TR: 1285.5 ms
TE: 17.4 ms
NEX 4

SI 0.50/0.55 mm
FOV 3.0 cm
MTX 256

Pos -5.00 mm F
bladder MRI: 1
OMRF_double_echo, 3 : 1