

OMRF 7T/30

A

BRUKER spect

RS_7

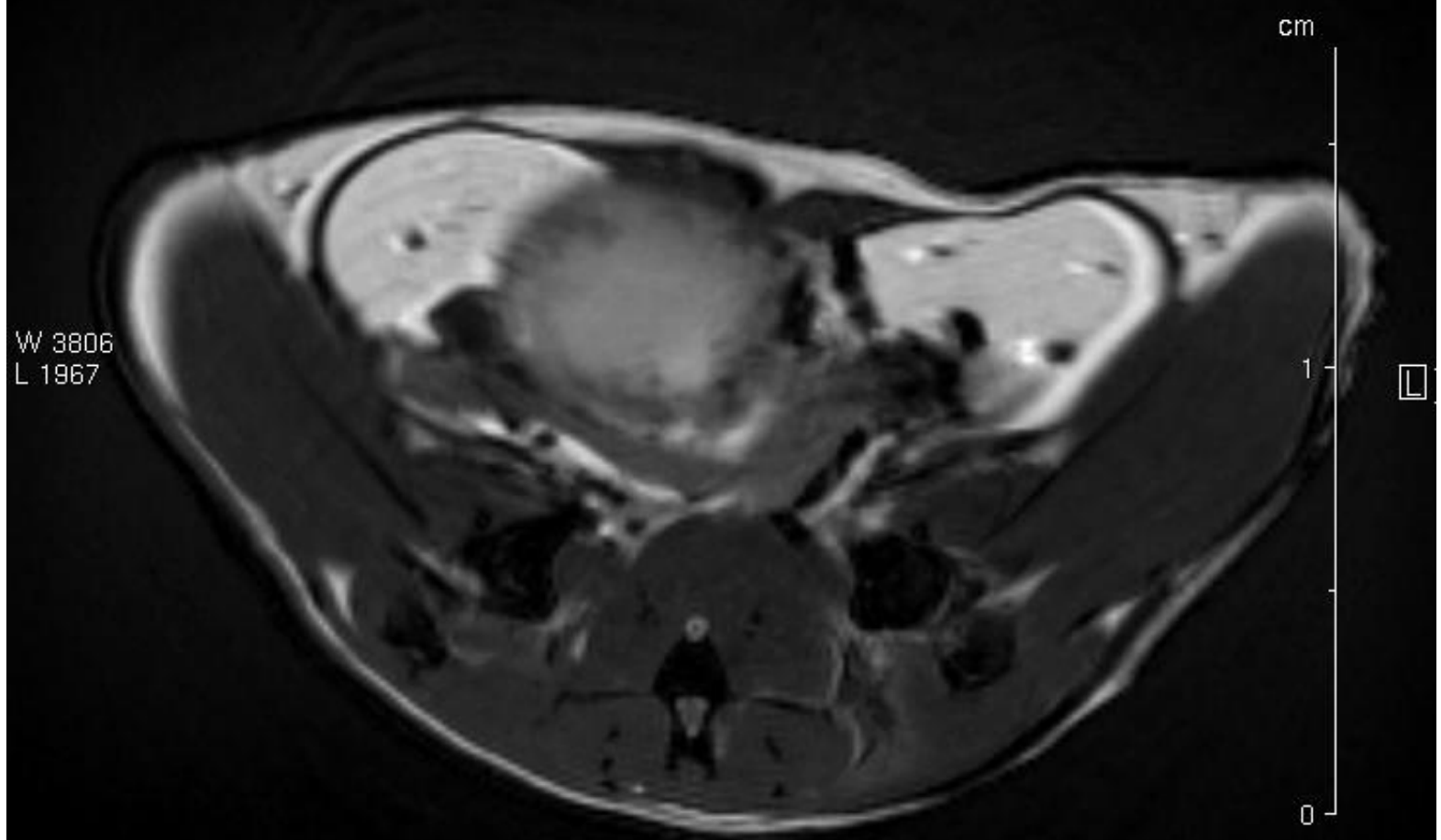
Date: 1 Aug 2005

RS_7

Time: 22:46

*

M 5.0 kg



W 3806
L 1967

Scan: 14
Slice: 1/8
Echo: 1/2
MSME (pvm)
TR: 1200.0 ms
TE: 17.4 ms
NEX 4

SI 1.00/1.15 mm
FOV 3.2 cm
MTX 256
Pos 0.38 mm H
bladder MRI: 1
OMRF_double_echo, 14:1