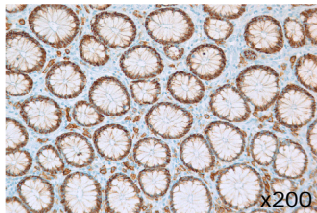
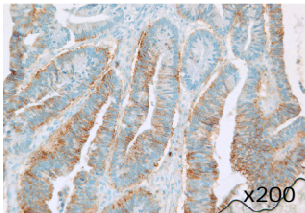


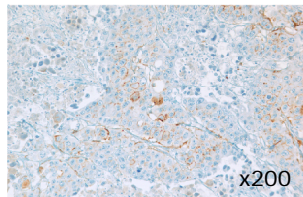
a. Normal colon



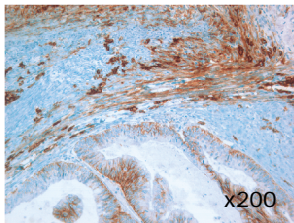
b. Moderately differentiated adenocarcinoma, epithelial syndecan-1



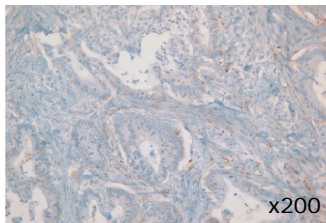
c. Poorly differentiated adenocarcinoma



d. Moderately differentiated adenocarcinoma, epithelial and stromal syndecan-1



e. Moderately differentiated adenocarcinoma, syndecan-1



f. Moderately differentiated adenocarcinoma, fascin

