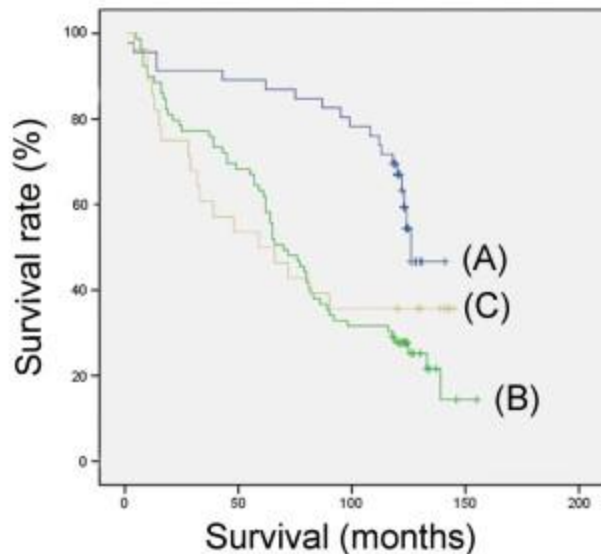


Overall survival



HIWI overall expression

(A) Low expression (n=46)

(B) Moderate expression (n=79)

(C) High expression (n=28)

(A) vs (B) $P < 0.001$ $\chi^2 = 15.715$

(A) vs (C) $P = 0.014$ $\chi^2 = 6.053$

(B) vs (C) $P = 0.592$ $\chi^2 = 0.287$