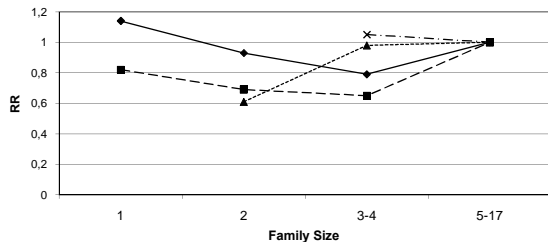
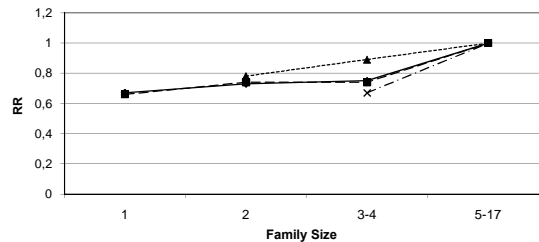


### Stomach Cancer (age at diag. <50)



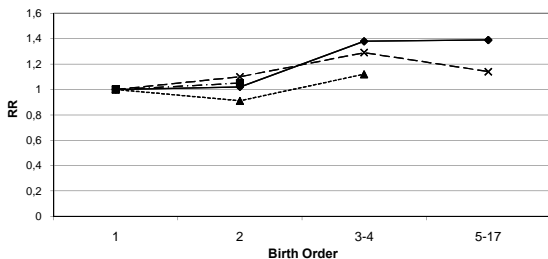
birth order	RR (95% CI)	RR (95% CI)	RR (95% CI)	Ref
any	1.14 (0.56-2.32)	0.93 (0.51-1.70)	0.79 (0.42-1.48)	1.00
1	0.82 (0.50-1.35)	0.69 (0.42-1.14)	0.65 (0.39-1.08)	1.00
2	.	0.61 (0.24-1.51)	0.98 (0.40-2.38)	1.00
3-4	.	.	1.05 (0.04-29.56)	1.00

### Stomach Cancer (age at diag. ≥ 50)



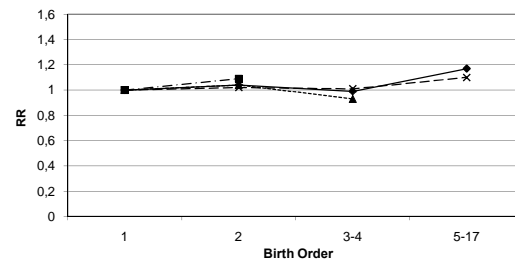
birth order	RR (95% CI)	RR (95% CI)	RR (95% CI)	Ref
any	<b>0.67</b> (0.56-0.81)	<b>0.73</b> (0.62-0.86)	<b>0.75</b> (0.64-0.88)	1.00
1	<b>0.66</b> (0.52-0.84)	<b>0.74</b> (0.58-0.95)	<b>0.74</b> (0.57-0.95)	1.00
2	.	0.78 (0.55-1.09)	0.89 (0.64-1.24)	1.00
3-4	.	.	<b>0.67</b> (0.50-0.89)	1.00

### Lung Cancer (age at diag. <50)



family size	Ref	RR (95% CI)	RR (95% CI)	RR (95% CI)
any	1.00	1.02 (0.90-1.16)	<b>1.38</b> (1.21-1.59)	<b>1.39</b> (1.07-1.81)
2	1.00	1.05 (0.86-1.29)	.	.
3-4	1.00	0.91 (0.74-1.13)	1.12 (0.92-1.37)	.
5-17	1.00	1.10 (0.69-1.75)	1.29 (0.86-1.93)	1.14 (0.74-1.75)

### Lung Cancer (age at diag. ≥ 50)



family size	Ref	RR (95% CI)	RR (95% CI)	RR (95% CI)
any	1.00	1.04 (0.98-1.10)	0.99 (0.91-1.08)	1.17 (0.99-1.39)
2	1.00	1.09 (0.98-1.21)	.	.
3-4	1.00	1.04 (0.95-1.15)	0.93 (0.82-1.05)	.
5-17	1.00	1.02 (0.86-1.22)	0.99 (0.91-1.08)	1.17 (0.99-1.39)