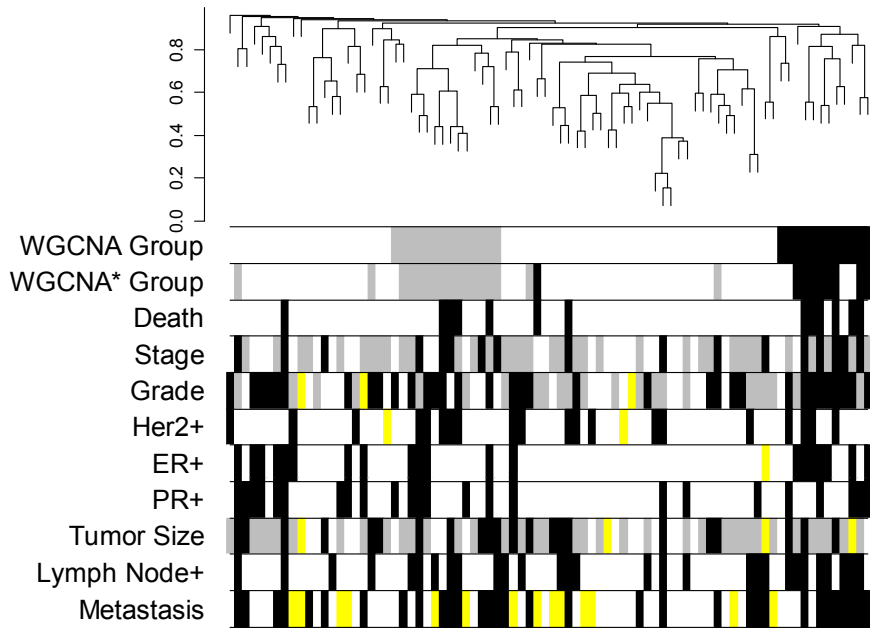
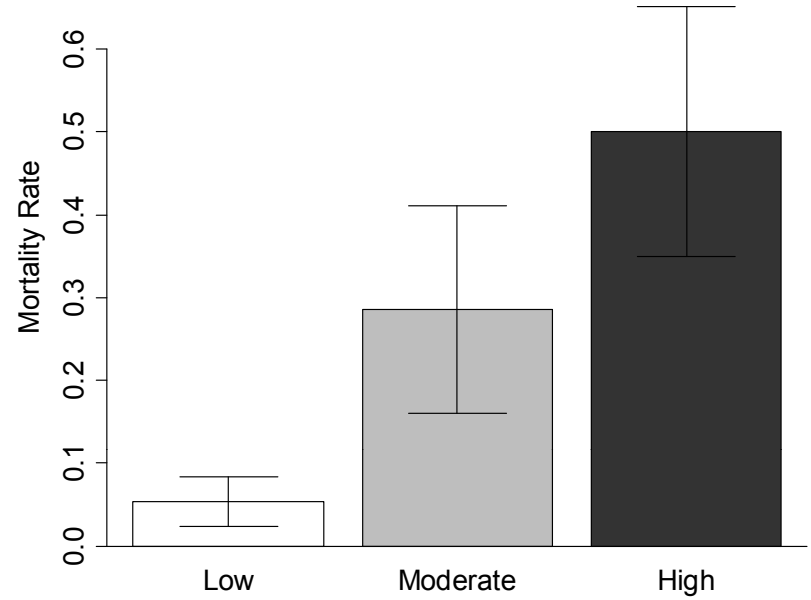


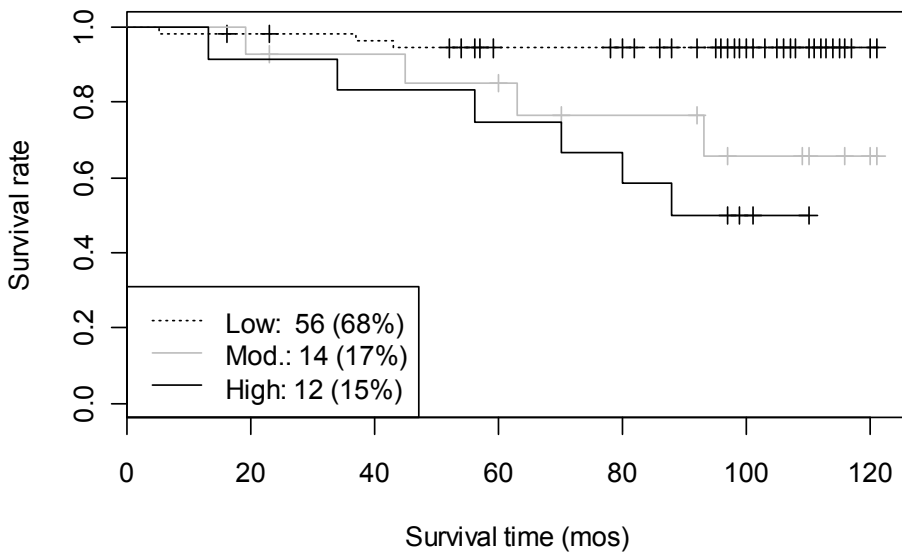
A. Patients clustered by 26 biomarkers



B. Mortality rates (and SD errors) by WGCNA, $p = 2.5 \times 10^{-4}$



C. Survival by WGCNA patient groups, $p = 3.9 \times 10^{-4}$



D. Survival by WGCNA* patient groups, $p = 9.1 \times 10^{-6}$

