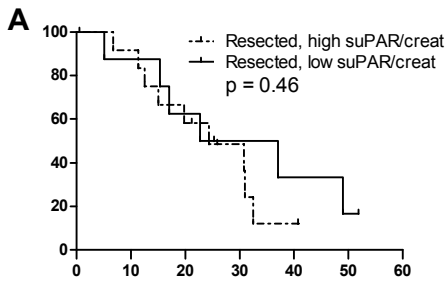
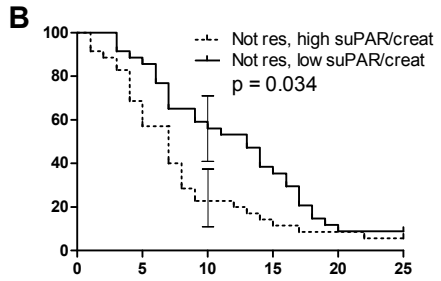


Percent survival



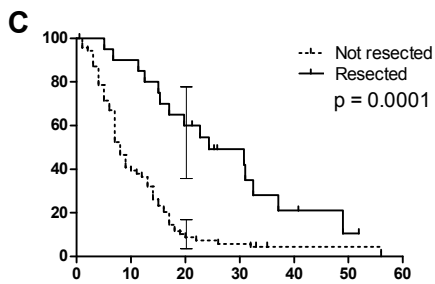
**Number at risk**

Resected, high suPAR/creat	12	11	7	4	1	0	0
Resected, low suPAR/creat	9	7	5	3	2	1	0



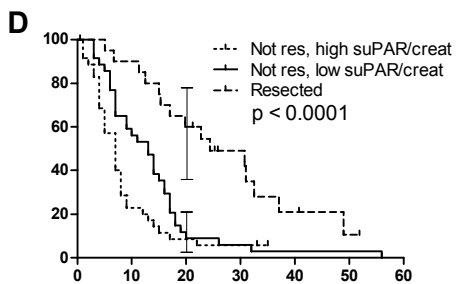
**Number at risk**

Not res, high suPAR/creat	35	21	8	5	3	2
Not res, low suPAR/creat	35	30	20	13	4	3



**Number at risk**

Not resected	70	28	7	4	1	1	0
Resected	21	18	12	7	3	1	0



**Number at risk**

Not res, high suPAR/creat	35	8	3	2	0	0	0
Not res, low suPAR/creat	35	20	4	2	1	1	0
Resected	21	18	12	7	3	1	0

Follow-up (months from diagnosis)