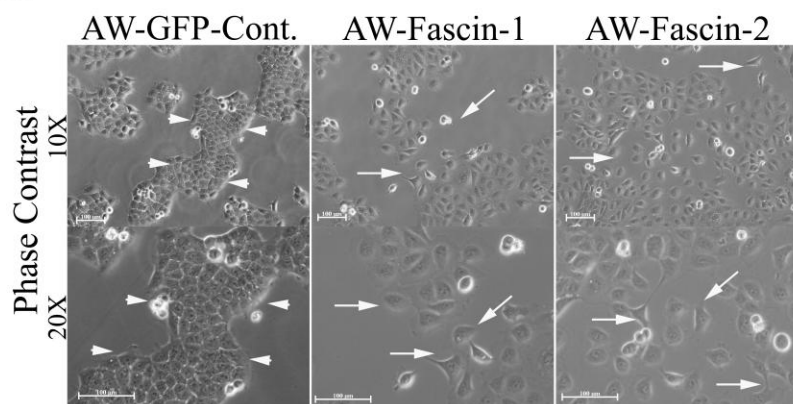
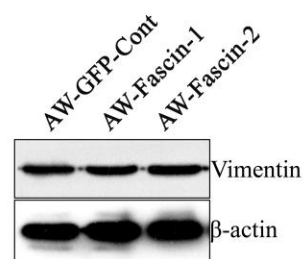


Fig S1

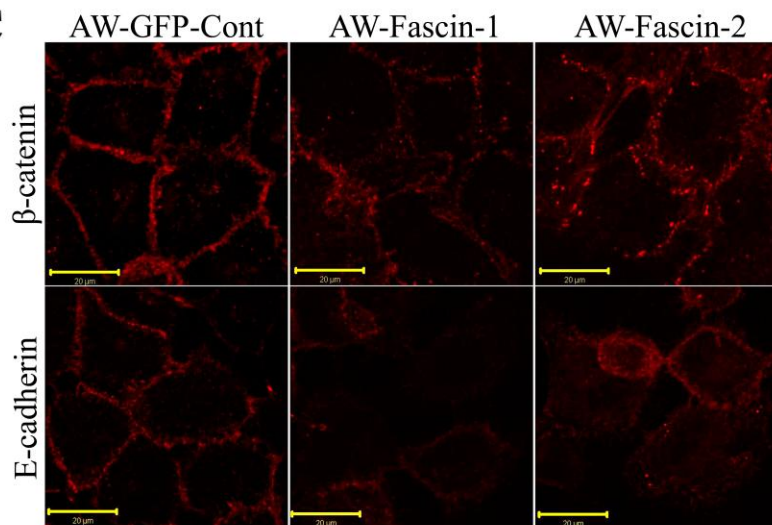
A



B



C



D

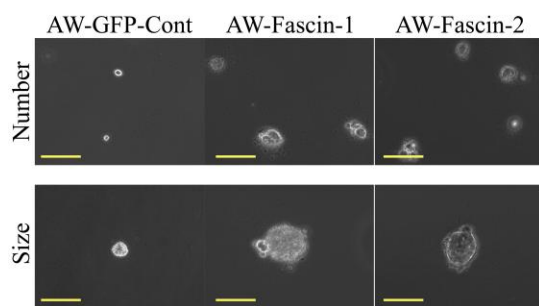


Figure S1: (A) Cell morphology (shape) of fascin-overexpressed and vector control clone analysed by phase contrast microscopy. Scale bar: 100µm. **(B)** Western blot analysis of fascin-overexpressed (AW-Fascin-1 and AW-Fascin-2) and vector control clones (AW-GFP-Cont) with antibody to vimentin. β-actin was used as a loading control. **(C)** Representative confocal images of β-catenin and E-cadherin staining in stable AW-Fascin-1, AW-Fascin-2 and AW-GFP-Cont clone. Scale bars: 10µm. **(D)** Representative image of the size and number of colonies formed in soft agar of the indicated clones. Scale bar: 100µm.