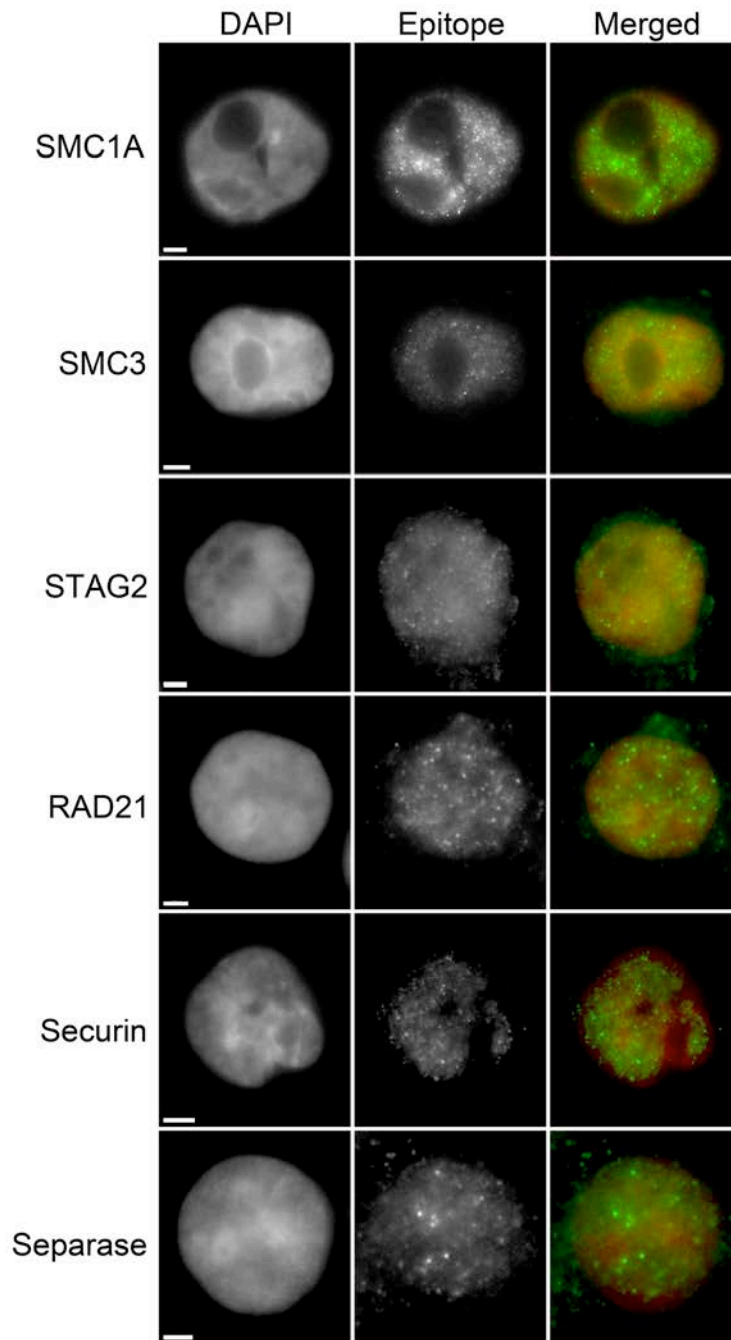


ADDITIONAL FILES

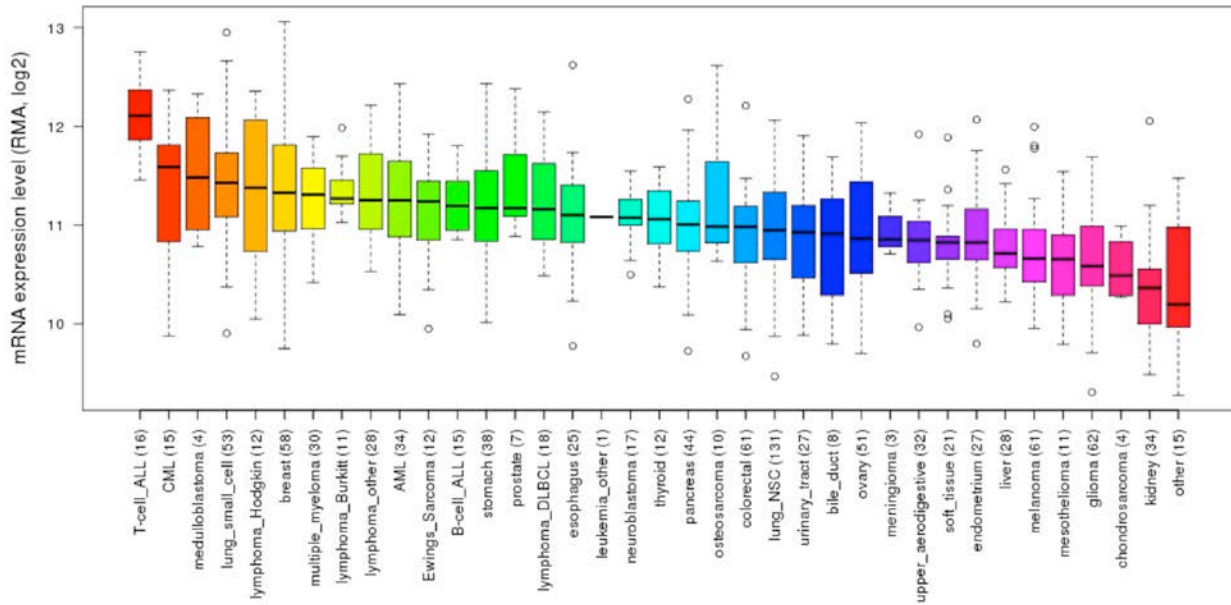
Supplementary Figure 1: Spatial Localization of Cohesion-Related Proteins in HDLM-2.



Supplementary Figure 1: Spatial Localization of Cohesion-related Proteins in HDLM-2.

Indirect immunofluorescence was employed to evaluate the localization of six proteins central to sister chromatid cohesion in HDLM-2. Presented are representative low-resolution images obtained from HDLM-2 cells. Nuclei were counterstained with DAPI and immunofluorescently labeled for the epitope indicated. Scale bar represents 20 μ m.

Supplementary Figure 2: Gene Expression Data for RAD21 in Human Cancer Cell Lines.



Supplementary Figure 2: Gene Expression Data for RAD21 in Human Cancer Cell Lines.

Graphical depiction of the publically available mRNA expression data for *RAD21* in various cancer cell lines (x-axis): numbers in brackets indicate number of cell lines evaluated within each tumor type. All data is extracted from the CCLE_Expression_Entrez_2012-10-18.res :Gene-centric RMA-normalized mRNA expression data (<http://www.broadinstitute.org/ccle/home>).

Supplementary Table 1: Antibodies Dilutions Employed in this Study.

Epitope	Source	Cat. No.	IIF Dilution^A	WB Dilution^B
SMC1A	Abcam	ab9262	1:2,000	1:7,500
SMC3	Abcam	ab9263	1:500	1:3,000
RAD21	Abcam	ab16473	1:200	1:2,000
STAG2	Abcam	ab4463	1:200	1:1,000
Securin	Abcam	ab26273	1:200	1:1,000
Separase	Abcam	ab3762	1:200	1:1,000

^AIndirect Immunofluorescence (IIF)

^BWestern Blot (WB)