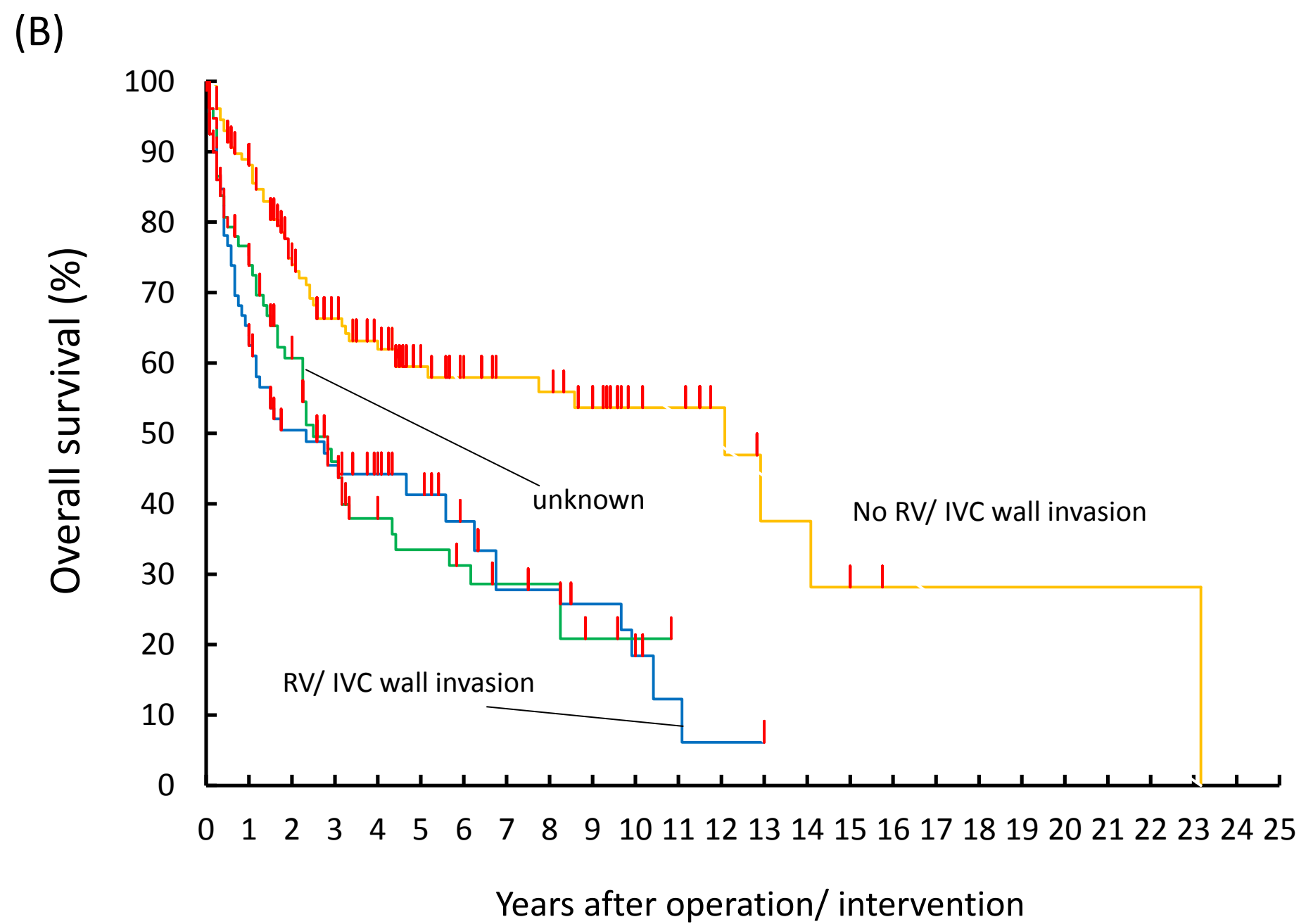


Surgical category	No. of Patients at Risk										No. Who died
1	196	119	73	42	32	15	10	5	1		82
2+3	77	33	18	12	10	5	2	0	0		47
4+5	19	3	3	1	1	3	0	0	0		18



RV/IVC wall invasion	No. of Patients at Risk										No. Who died
no	133	81	54	33	28	14	9	5	1		52
yes	78	33	18	14	11	5	2	0	0		51
unknown	81	40	21	10	5	2	0	0	0		44