

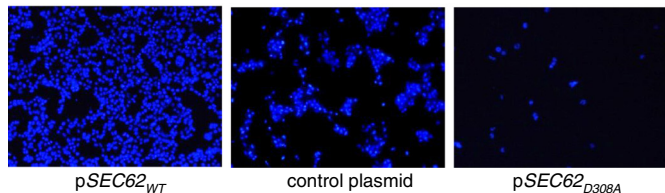
A

```

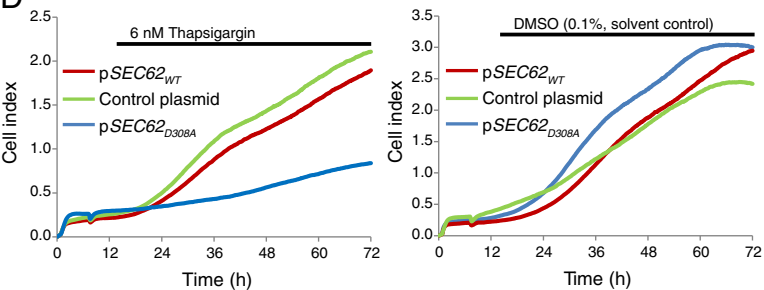
1  MAERRRHKKRIQEVGEPSSKEEKAVAKYLRFNCPCTKSTNMMGHRVDYFIAS 50
51  KAVDCLLDSDKWAKAKKGEEALFTTRESVVDYCNRLKKQFFHRALKVMKM 100
101 KYDKDKIKKEKDKGKAESGKEEDKKSCKENIKDEKTKKEKEKDKGEGEES 150
151  KKEETPGTPKKKETKKKFKLEPHDDQVFLDGNVYVWIYDPVHFKTFVMG 200
201  LILVIAVIAATLFPWLWPAEMRVGVYYLSVGAGCFVASILLLAVARCTLFL 250
251  IILWLITGGRHHFWFLPNLTADVGFIDSFRPLYTHEYKGPKADLKKDEKSE 300
301  TKKQOKSDSEEKSDSEKKEDEEGKVGPGNHGTEGSGGERHSDDTSDRRED 350
351  DRSQHSNGNDNFEMITKEELEQQTDGDCEEDEEEENDGETPKSSSHEKS 399

```

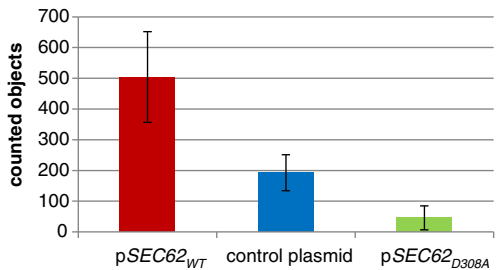
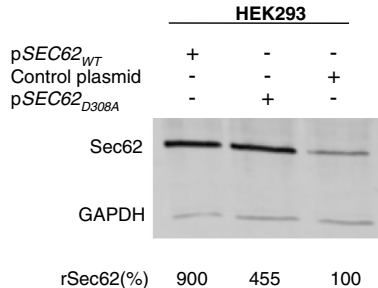
C



D



B



E

