

Additional file 4 – Transfections with remaining *Ch25h* promoter reporters

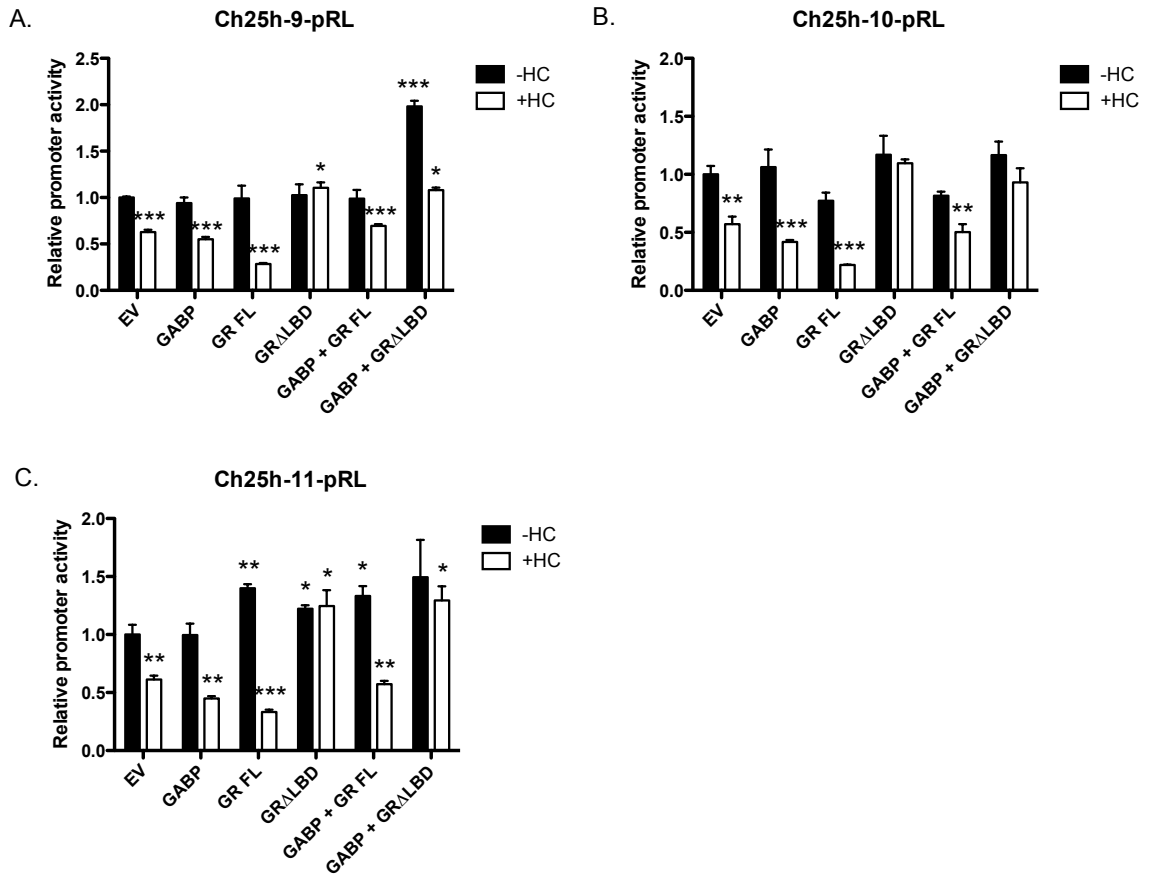


Figure S3: GRΔLBD activates the *Ch25h* promoter in the presence and absence of HC.

EPH-4 cells were transiently transfected with the *Ch25h* promoter reporters **A.** Ch25h-9-pRL, **B.** Ch25h-10-pRL and **C.** Ch25h-11-pRL as well as with expression vectors for GABP α/β (GABP), full-length GR (GR FL) and GR lacking the ligand binding domain (GRΔLBD). Cells were treated 24 hours after transfection with either ethanol vehicle (-HC) or 1 μ g/mL HC (+HC) and assayed for luciferase activity following a 48 hour incubation. Bars represent the mean of technical replicates, and error bars represent standard deviation (N = 3). Statistically significant changes in *Ch25h* promoter activity relative to the EV (-HC) transfection are indicated: one asterisk, $p < 0.05$ (significant); two asterisks, $p < 0.005$ (very significant); three asterisks, $p < 0.0005$ (very highly significant).