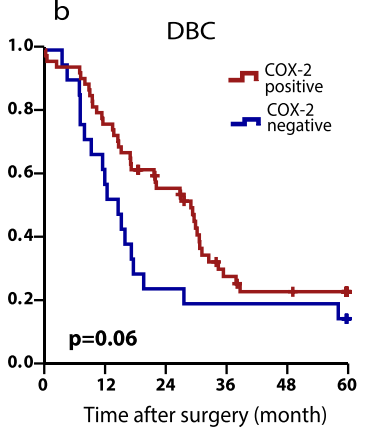
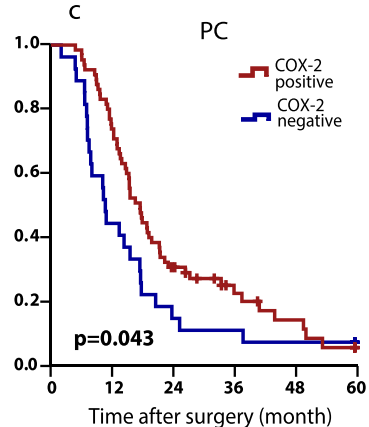


Number at risk

COX-2 positiv	48	42	37	29	25	20
COX-2 negativ	14	11	7	3	3	3

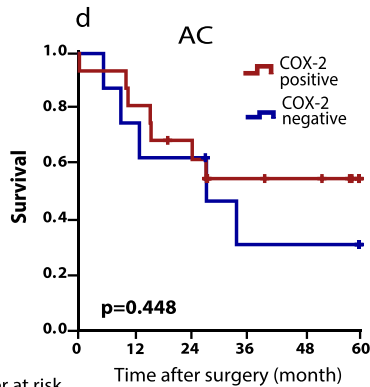


55	42	28	12	9	8
21	12	5	4	4	3



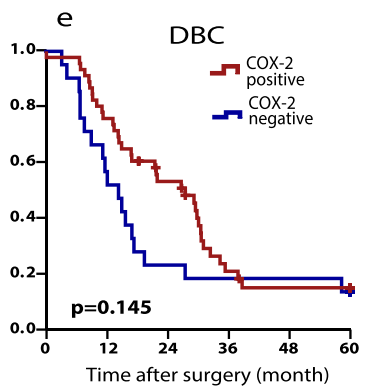
65	48	19	10	5	2
27	12	4	3	2	2

Pancreaticobiliar

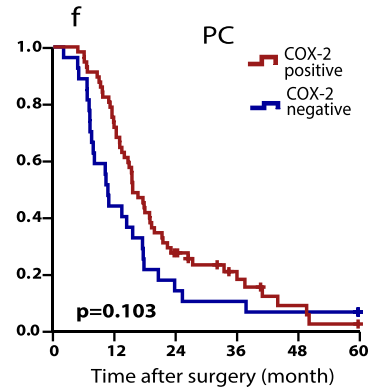


Number at risk

COX-2 positiv	16	13	10	6	5	2
COX-2 negativ	8	6	5	2	2	2

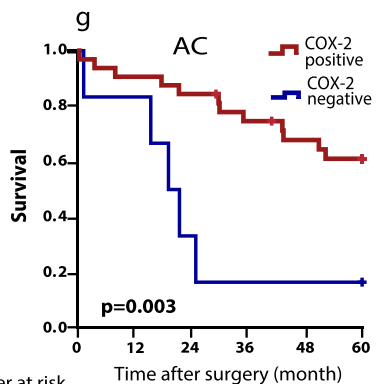


46	35	22	8	5	5
21	12	5	4	4	3



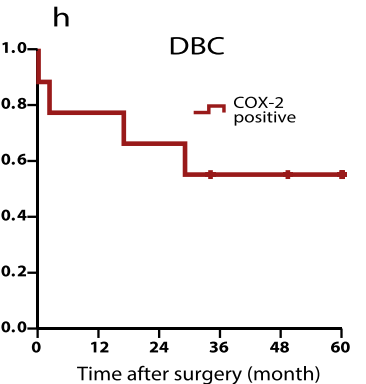
57	41	15	8	3	1
27	12	4	3	2	2

Intestinal

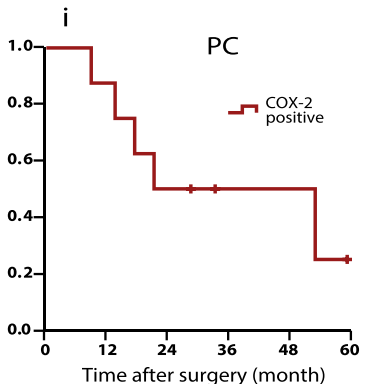


Number at risk

COX-2 positiv	32	29	27	23	20	18
COX-2 negativ	6	5	2	1	1	1



9	7	6	4	4	3
0					



8	7	4	2	2	1
0					