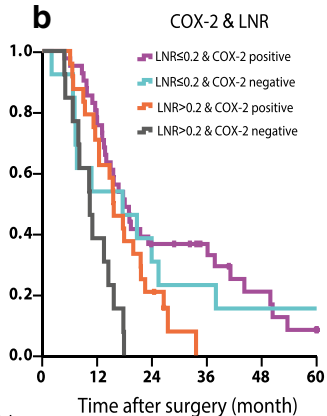


Number at risk

Grade 1,2 & COX-2 pos.	44	35	13	8	4	2
Grade 1,2 & COX-2 neg.	9	5	3	2	1	1
Grade 3,4 & COX-2 pos.	21	13	6	2	1	0
Grade 3,4 & COX-2 neg.	18	7	2	1	1	1



Number at risk

LNR ≤ 0.2 & COX-2 pos.	41	31	14	10	5	2
LNR ≤ 0.2 & COX-2 neg.	13	7	4	3	2	2
LNR > 0.2 & COX-2 pos.	24	17	5	0	0	0
LNR > 0.2 & COX-2 neg.	13	5	0	0	0	0