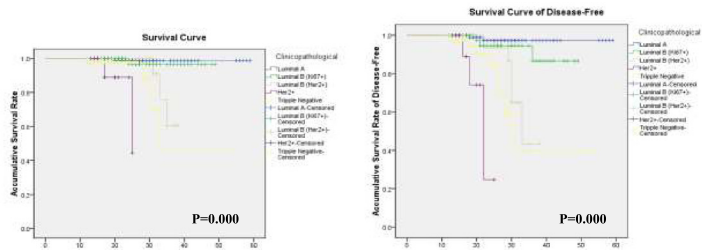


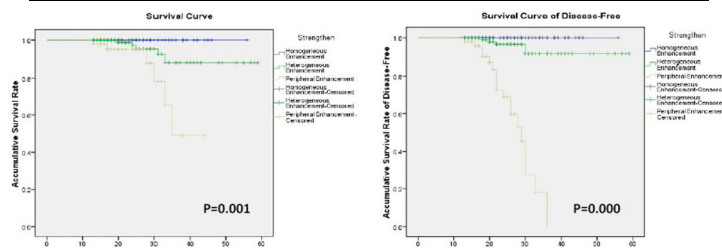
A Analysis grouping by the Clinicopathological Subtypes



B Cox proportional hazards model and Analysis grouping by the Patterns of Tumor Enhancement

Cox proportional hazards model of biological factors (including tumor enhancement mode under CT)

Parameters	Death		Tumor Progression	
	Sig.	EXP(B)	Sig.	EXP(B)
Age	0.395	0.946	0.114	0.933
Menopause	0.916	1.116	0.533	0.676
Family History	0.935	1.121	0.174	0.199
Tumor Diameter	0.219	1.447	0.029	1.596
Quadrant	0.662	1.159	0.383	1.253
Patterns of Enhancement (CT)	0.035	4.555	0.000	10.311
Histological Grade	0.476	0.511	0.395	1.711
Cancer Thrombosis	0.228	0.331	0.793	0.839
Lymph Node metastasis	0.037	9.384	0.020	4.542
ER	0.243	0.361	0.594	0.723
PgR	0.439	0.516	0.155	0.405
HER2	0.042	4.091	0.047	2.910
Ki67	0.352	2.197	0.054	3.538
P53	0.947	0.999	0.942	1.001



C Cox proportional hazards model and Analysis grouping by the Distribution of MVD

Cox proportional hazards model of biological factors (including difference of MVD)

Parameters	Death		Tumor Progression	
	Sig.	EXP(B)	Sig.	EXP(B)
Age	0.113	0.900	0.021	0.905
Menopause	0.852	0.814	0.421	0.581
Family History	0.580	0.495	0.063	0.144
Tumor Diameter	0.469	1.244	0.051	1.506
Quadrant	0.783	1.113	0.333	1.299
Grade of DMVD	0.005	62.369	0.000	112.292
Histological Grade	0.845	0.838	0.584	1.366
Cancer Thrombosis	0.213	0.274	0.967	1.027
Lymph Node metastasis	0.017	19.393	0.033	4.827
ER	0.477	0.486	0.961	1.034
PgR	0.714	0.708	0.495	0.658
HER2	0.299	2.028	0.148	2.041
Ki67	0.266	2.775	0.026	4.180
P53	0.335	1.014	0.145	1.015

