

# Supplementary Table

**Supplementary Table 1. Sensitizer enhancement ratio of U251 cells**

Inhibitor	SER <sub>0.5</sub>	SER <sub>0.05</sub>
RPM	1.06	1.04
TMZ	1.41	1.17
TMZ+RPM	<b>1.21</b>	<b>1.18</b>
PI103	1.41	1.20
TMZ	1.41	1.17
TMZ+PI103	<b>1.55</b>	<b>1.34</b>
17DMAG	1.31	1.18
TMZ	1.41	1.17
TMZ+17DMAG	<b>1.55</b>	<b>1.39</b>
LBH589	1.27	1.10
TMZ	1.41	1.17
TMZ+LBH589	<b>1.50</b>	<b>1.35</b>

**Supplementary Table 2. Sensitizer enhancement ratio of T98G cells**

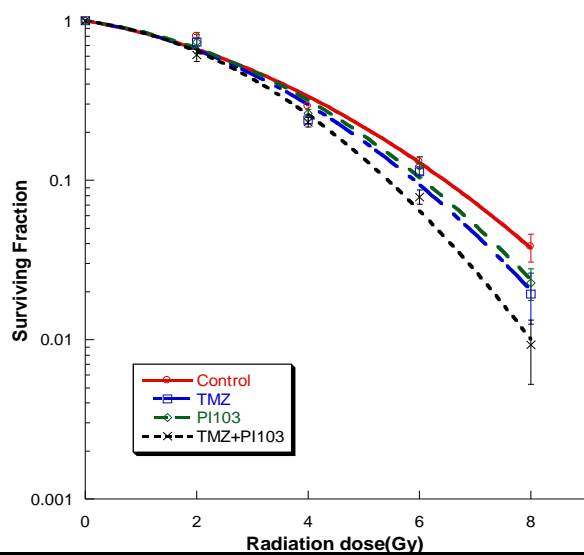
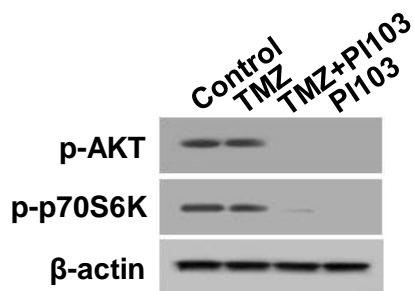
Inhibitor	SER <sub>0.5</sub>	SER <sub>0.05</sub>
RPM	1.13	1.04
TMZ	1.26	1.07
TMZ+RPM	<b>1.23</b>	<b>1.10</b>
PI103	1.26	1.14
TMZ	1.26	1.07
TMZ+PI103	<b>1.65</b>	<b>1.30</b>
17DMAG	1.16	1.03
TMZ	1.26	1.07
TMZ+17DMAG	<b>1.29</b>	<b>1.20</b>
LBH589	1.24	1.01
TMZ	1.26	1.07
TMZ+LBH589	<b>1.40</b>	<b>1.14</b>

**Supplementary Table 3. Sensitizer enhancement ratio of U87 cells**

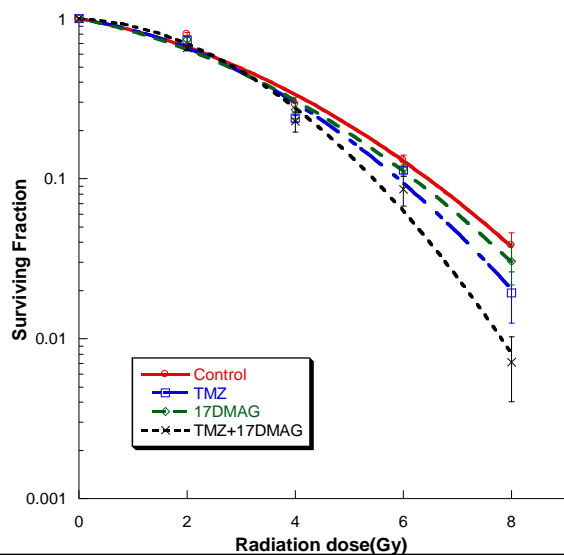
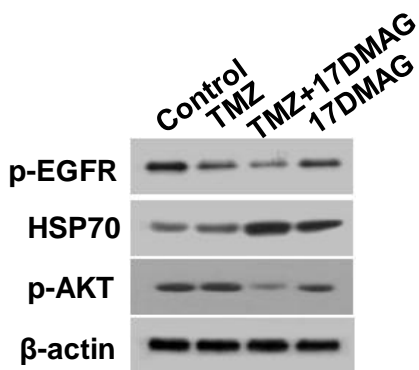
Inhibitor	SER <sub>0.5</sub>	SER <sub>0.05</sub>
PI103	1.05	1.08
TMZ	1.07	1.09
TMZ+PI103	<b>1.12</b>	<b>1.21</b>
17DMAG	1.02	1.03
TMZ	1.07	1.09
TMZ+17DMAG	<b>1.08</b>	<b>1.20</b>
LBH589	1.06	1.05
TMZ	1.07	1.09
TMZ+LBH589	<b>1.2</b>	<b>1.20</b>

# Supplemental data Fig.S1

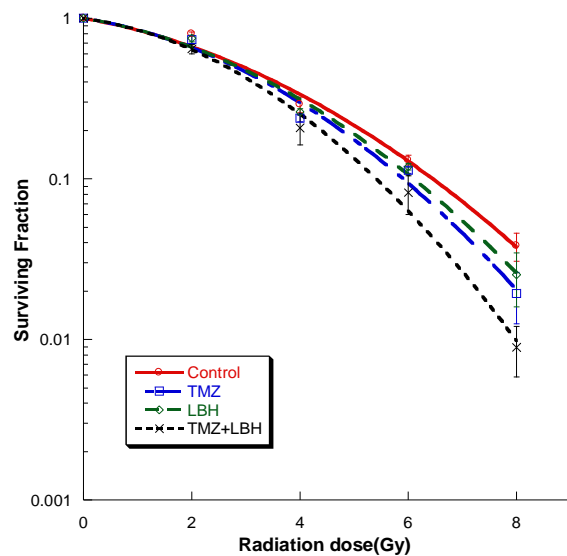
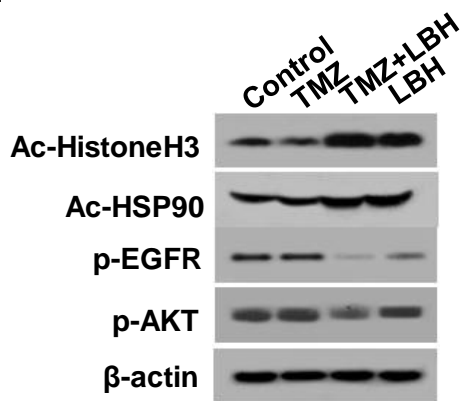
**A.**



**B.**

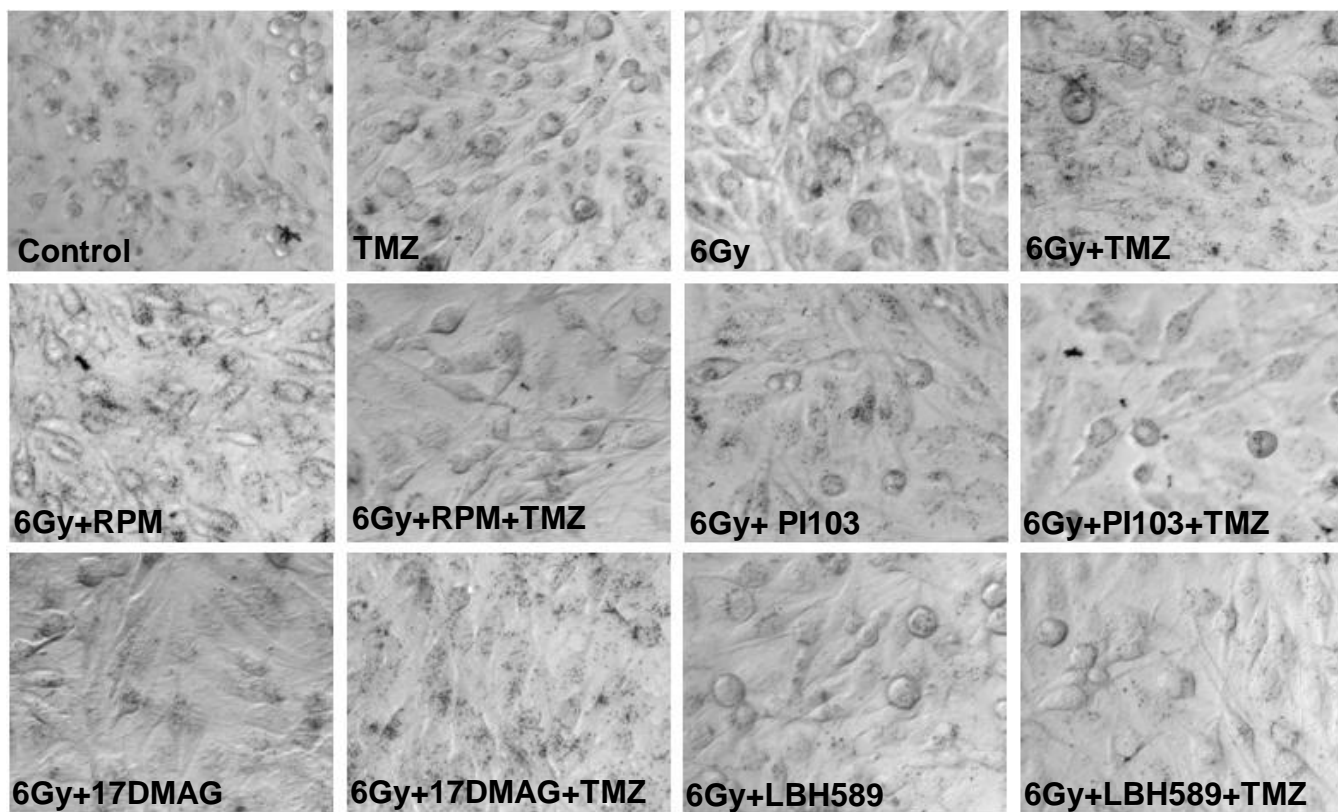


**C.**



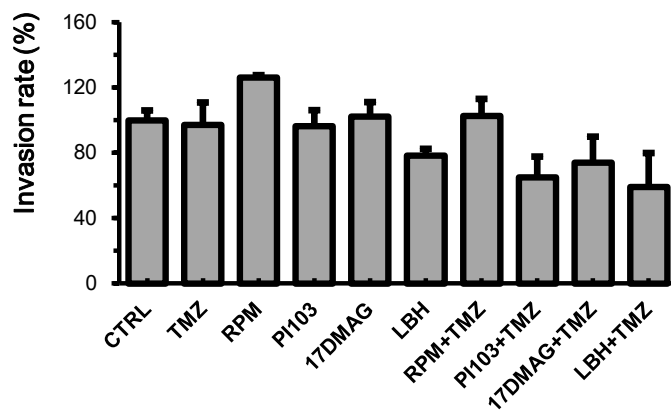
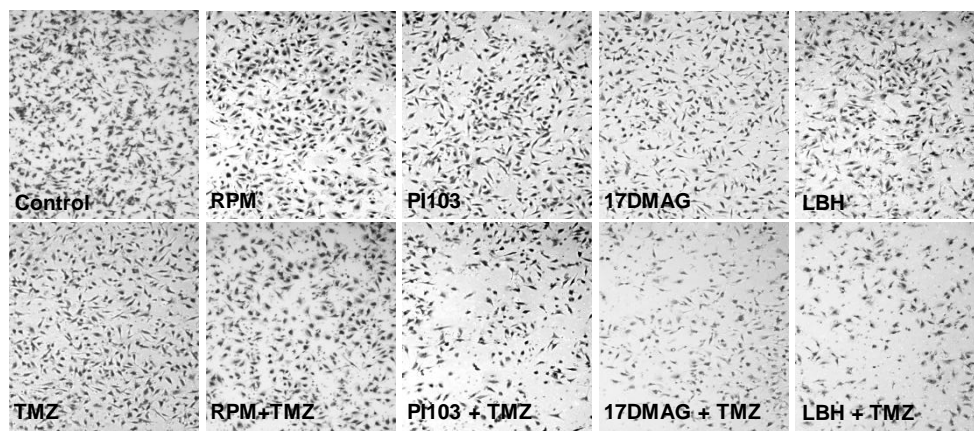
# Supplemental data Fig.S2

**A.**



# Supplemental data Fig.S3

**A.**



**B.**

