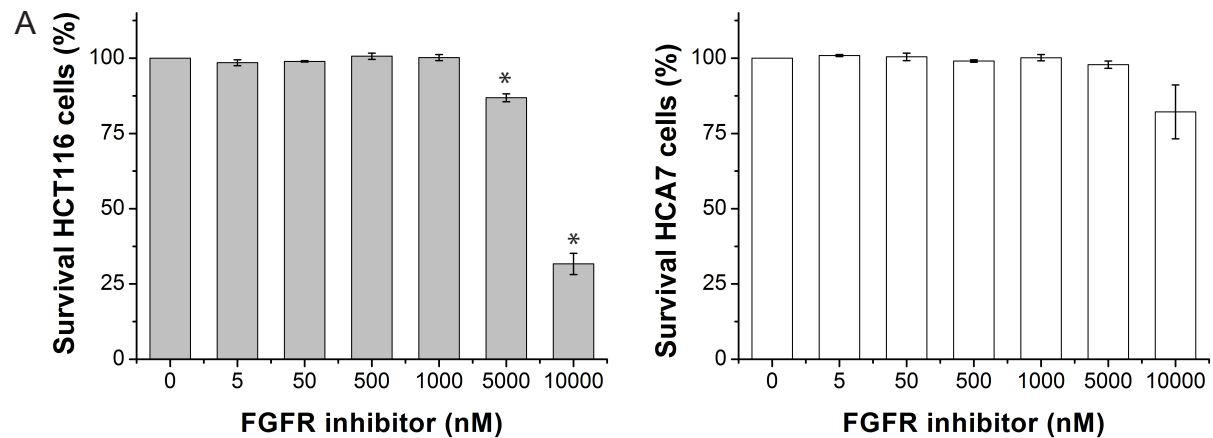


Figure e1



B

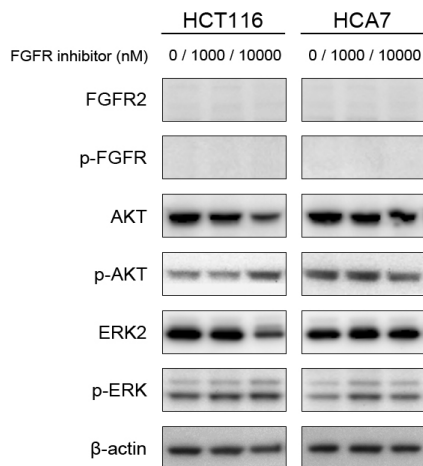


Figure e1. Effect on cell survival and protein levels. (A) Effect of different concentrations FGFR inhibitor for 72 hours incubation on cell survival determined by sulforhodamine B assay. Data = means \pm SEM from three independent experiments performed in triplicate. *Significantly different from control conditions at the appropriate drug concentrations ($p < 0.05$; Tukey). (B) Immunoblot analysis of FGFR2 and downstream signaling molecules after 72 hours treatment. β -actin was used as a loading control. Blots shown are representative for two independent experiments.