

Additional file 1: Images of embryonic ovaries in culture

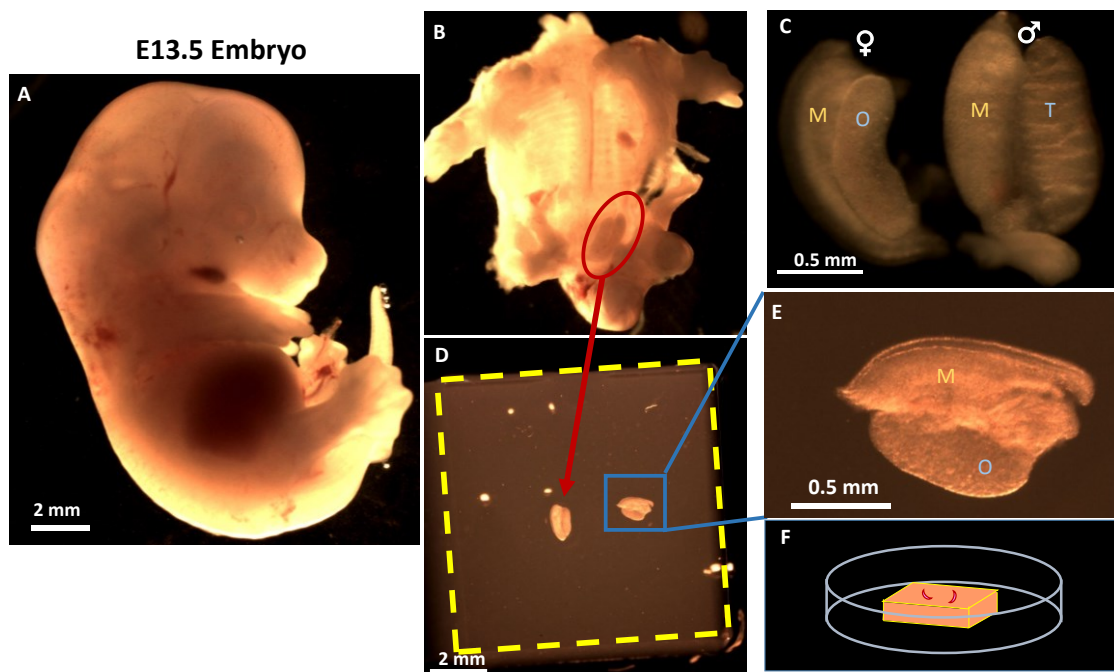


Figure S1. Images of E13.5 mouse ovaries in culture.

E13.5 CD1 mouse pups are collected and placed in a petri dish containing 1xPBS (A). A small ventral incision is made in the embryo, with the heart, bowel and liver removed out of the peritoneal cavity, leaving visible the mesonephros and the genital ridges (B, circled in red). At this stage of development, the female gonad (C, left) can be distinguished from the male one (C, right) by the characteristic transverse sex cords present in the male gonad that will later become the seminiferous tubules, giving it a striated pattern. The ovary is thinner and lacks any visible cords (C). The female gonads, along with the mesonephros, are dissected from each side of the body cavity and placed on top of the agar block, with 2-3 ovaries co-cultured on each block, with culture medium at the level of the agar block (D, the agar block is outlined by yellow dotted line). E: higher magnification of an ovary in culture on the agar block. F: an illustrated figure of the petri dish containing an agar block at approx. 0.5mm height, containing two ovaries (not to scale).

Abbreviations: M= mesonephros, T= testis, O = ovary.