

Additional file 1

Breast symptoms included in “breast-related consultations”

“Symptom library” for breast-related symptoms supplied by Prof W Hamilton’s Primary Care Diagnostics Group (Exeter University), which consists of codes recorded by the GP during consultations that have been identified as related to breast symptoms (Walker *et al*, 2014).

- Breast lump
- Breast fibroadenoma
- Breast pain
- Breast nodularity
- Nipple bleed
- Nipple retraction
- Nipple discharge
- Paget’s nipple
- Nipple pain
- Breast skin changes
- Breast cyst
- Breast infection
- Breast other
- Axillary lymphadenopathy
- Cervical lymphadenopathy

Other breast-related codes found in text descriptions of other codes

(NOS= not otherwise specified; NAD = no appreciable disease)

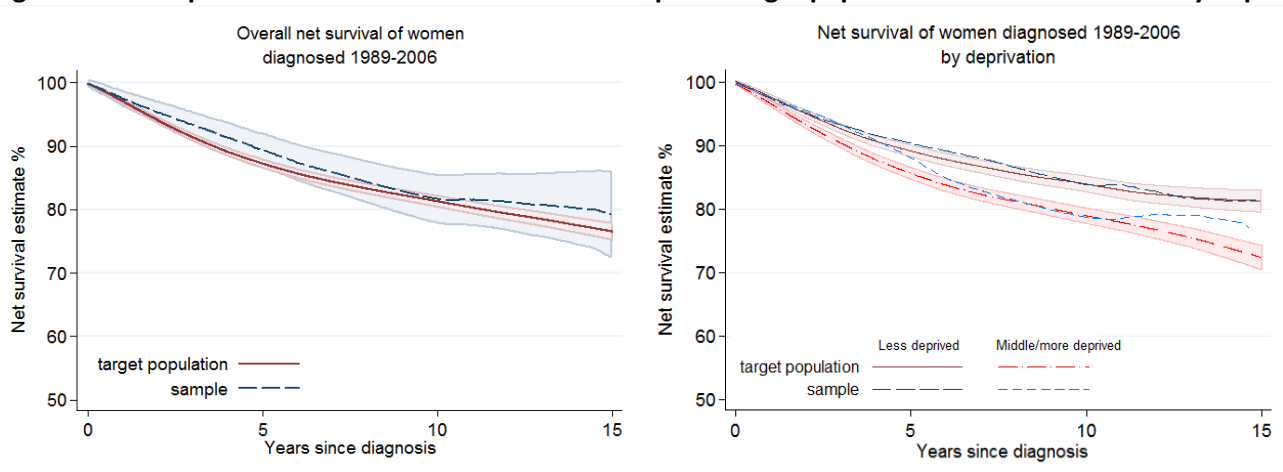
- Malignant neoplasm of female breast
- Ca female breast
- Breast examination
- Breast signs and symptoms NOS
- Mammography - X-ray
- Mammography abnormal
- Axillary pain
- Breast signs and symptoms
- Disorders of breast
- Eversion of nipple
- Family History: Breast cancer
- Inflammatory breast diseases NOS
- General breast exam. NAD
- General breast exam. NOS
- Other breast injuries
- Referral to mammography clinic
- Suspected breast cancer
- Axillary lump

Table S1A: Sample characteristics (N=786) compared to the remaining cohort (N=28,885)

	Sample matched to CPRD		Remaining cohort		χ^2 ^a p value	
	n	%	N	%		
Total	786	100.0	28,885	100		
Mean age (SD)		59.9 (6.0)		59.7 (6.0)		
Age groups						
	50-54	191	24.3	7,169	24.8	0.310
	55-59	174	22.1	7,079	24.5	
	60-64	216	27.5	7,264	25.1	
	65-70	205	26.1	7,373	25.5	
Vital status						
	Alive	567	72.1	17,202	59.6	<0.001
	Dead	219	27.9	11,683	40.4	
Extent of disease at diagnosis						
	Localised	437	55.6	15,785	54.6	0.940
	Regional	255	32.4	9,108	31.5	
	Distant	24	3.1	924	3.2	
	Missing	70	8.9	3,068	10.6	
Screening groups						
	Screen-detected cancer	316	40.2	10,584	36.6	0.041
	Not screen-detected cancer	470	59.8	18,301	63.4	
Deprivation category						
	Least deprived	211	26.8	5,307	18.4	<0.001
	2	213	27.1	6,470	22.4	
	3	140	17.8	5,750	19.9	
	4	112	14.2	5,414	18.7	
	Most deprived	110	14.0	5,916	20.5	
	Missing	0	0	28	0.1	
Period of diagnosis						
	1989-1994	81	10.3	8,173	28.3	<0.001
	1995-2000	283	36.0	9,428	32.6	
	2001-2006	422	53.7	11,284	39.1	

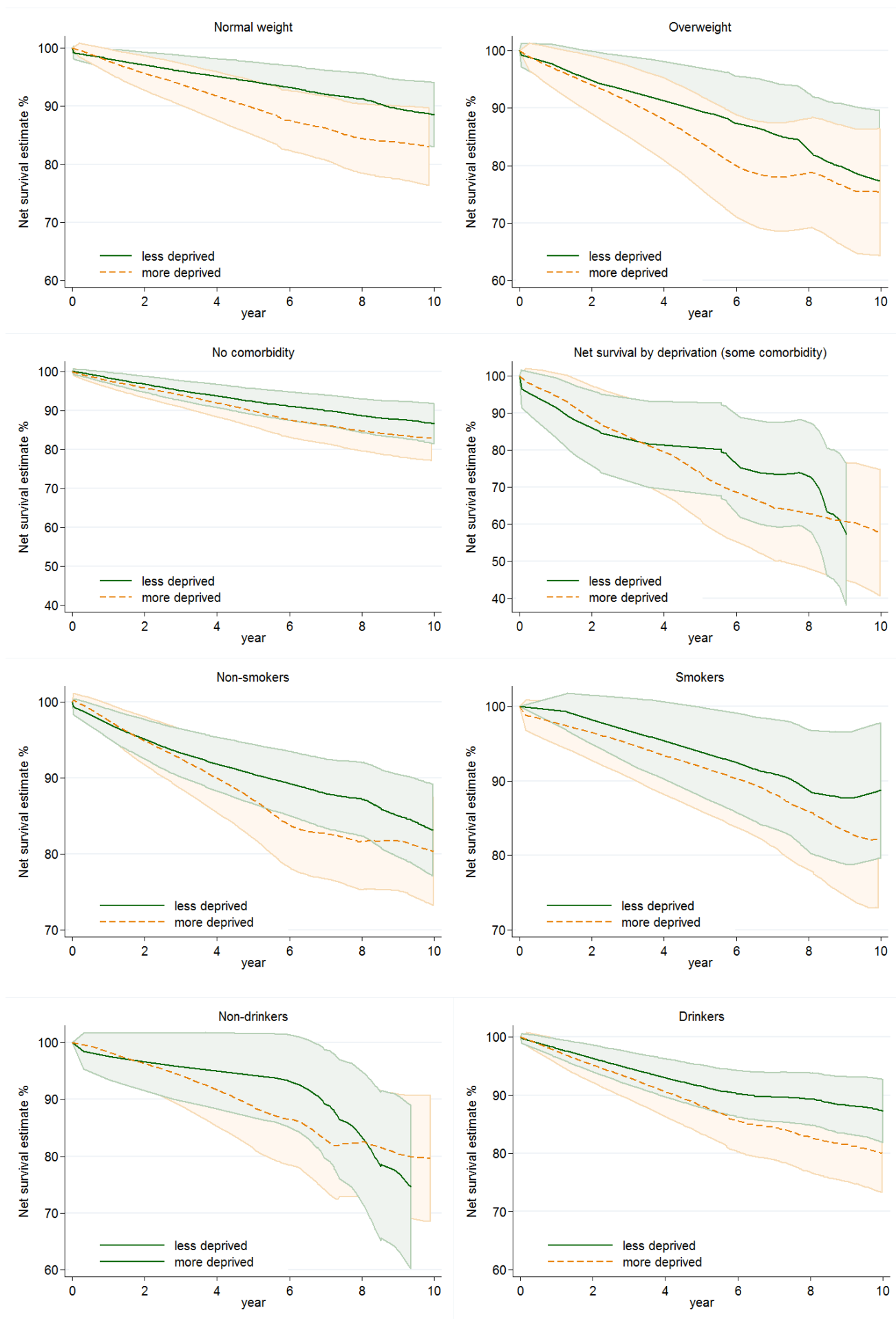
^a χ^2 test performed on non-missing data only

Figure S1A: Comparison of net survival of matched sample to target population cohort overall and by deprivation



Footnote: Estimates smoothed. CIs shown only for target population for clarity. Sample CIs fully overlap with those of target population.

Figure S2B: Net survival by deprivation (quintiles 1+2 vs quintiles 3,4+5) and co-variable sub-group



Footnote: Net survival estimated for all women with non-missing data, by co-variable subgroups shown in Table 1. Estimates smoothed.