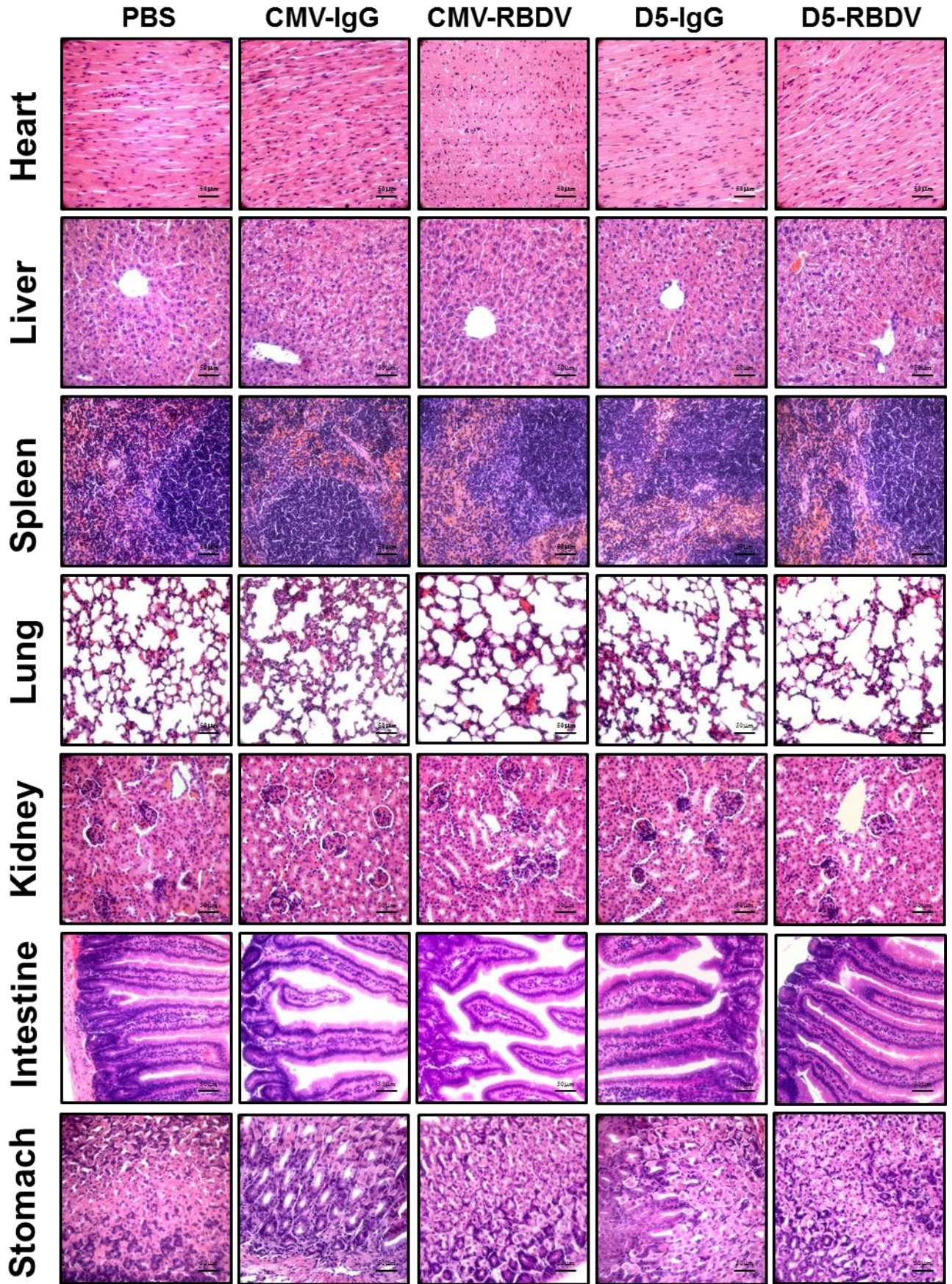
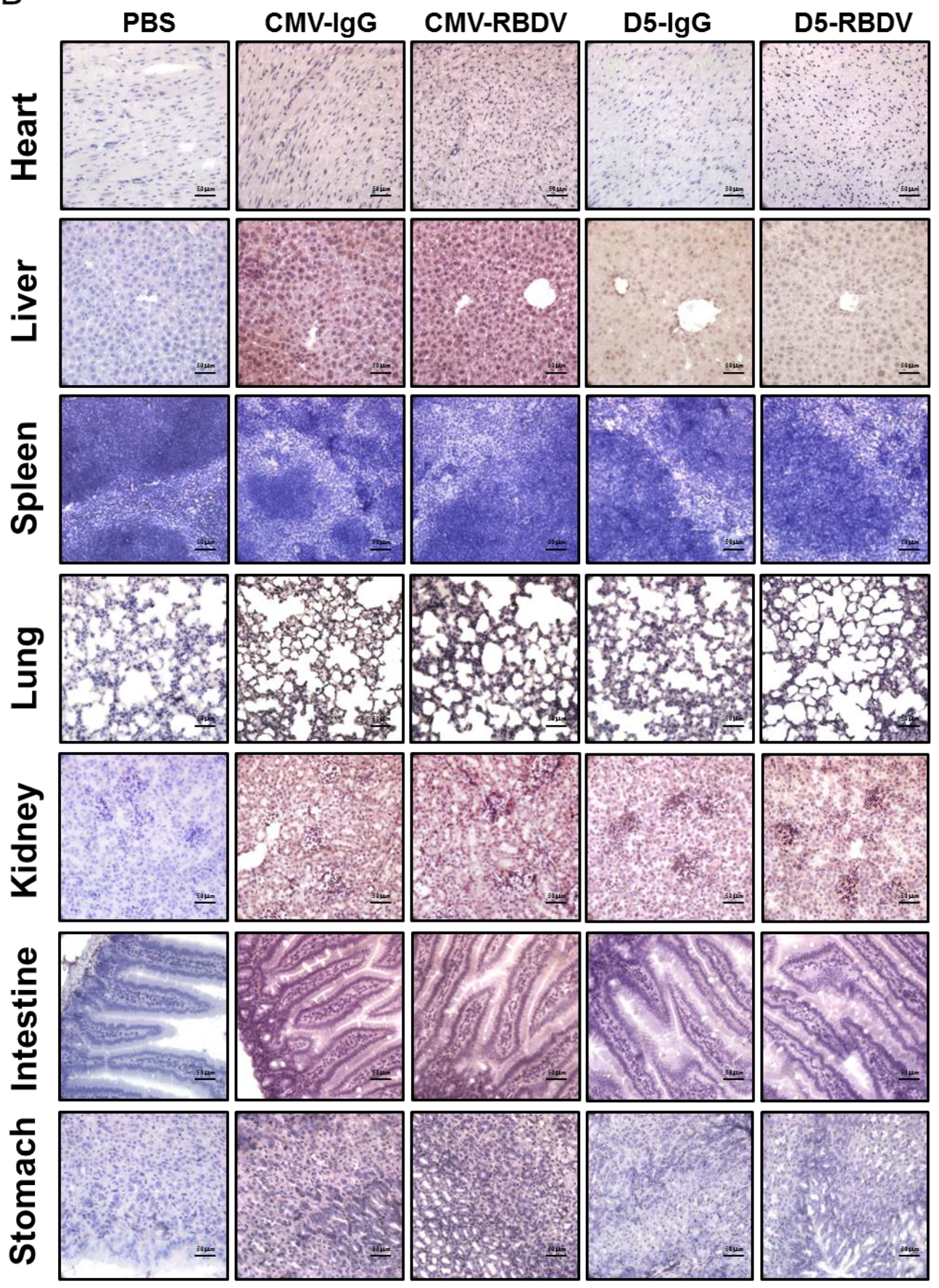


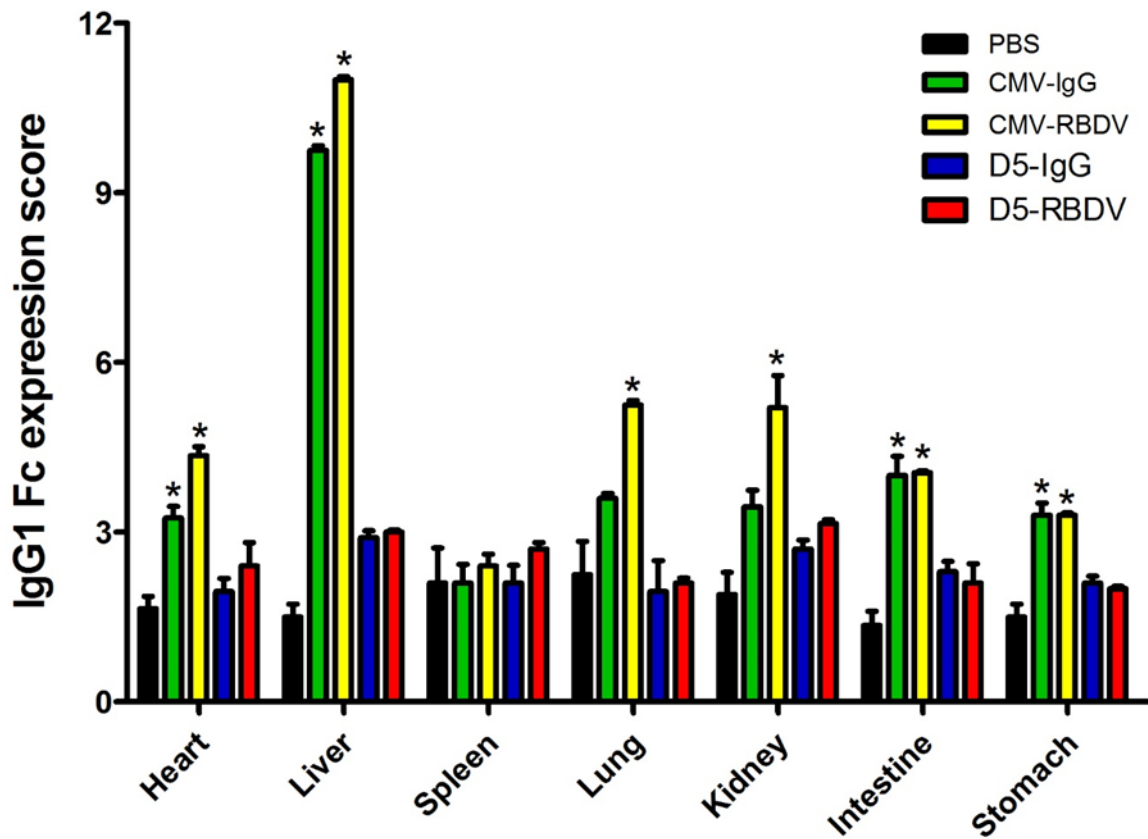
A



**B**



C



**Additional file 9. Histopathologic analysis of mice treated with LPPC/DNA complexes.** (A) H&E staining of normal organs including the heart, liver, spleen, lung, kidney, intestine and stomach at day 7 after an intravenous injection of PBS, LPPC/pCMV-RBDV-IgG1 Fc, LPPC/ pCMV-IgG1 Fc, pD5-RBDV-IgG1 Fc or LPPC/ pD5-IgG1 Fc complexes. (Scale bar: 50  $\mu$ m, 400 $\times$ ) (B) IHC staining of normal organs using anti-Human IgG1 Fc antibody. (Scale bar: 50  $\mu$ m, 400 $\times$ ) (C) Statistical analysis of the average score of human IgG1 Fc staining normal organs. Significance differences were evaluated by t-test, and the p values were represented as the tested group compared with the control group (\*: p<0.05).