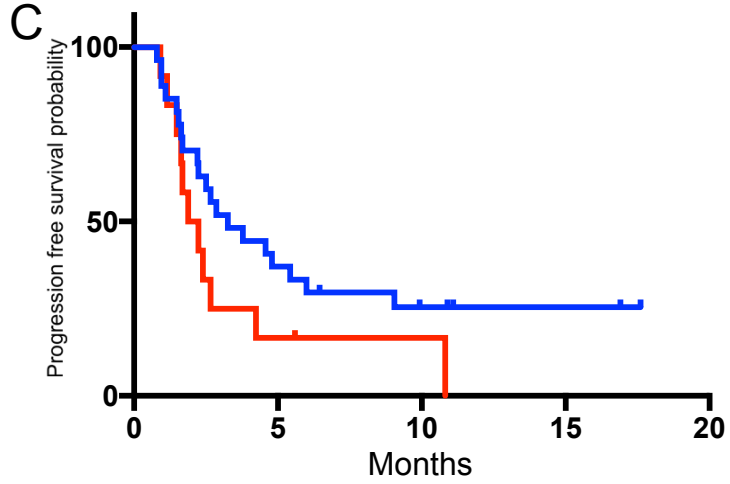
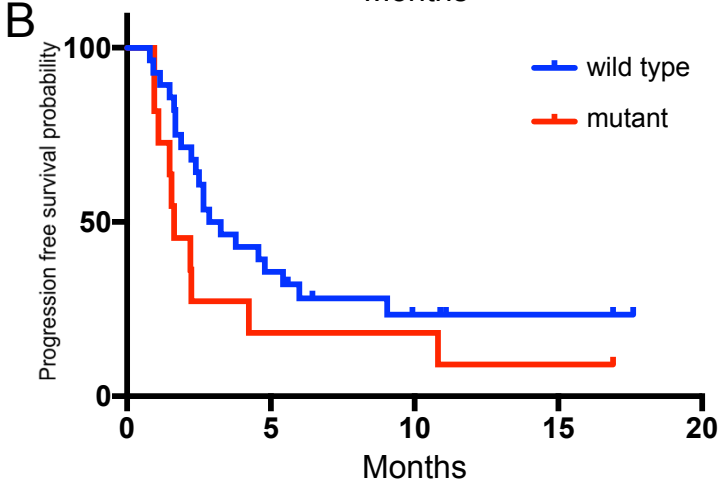
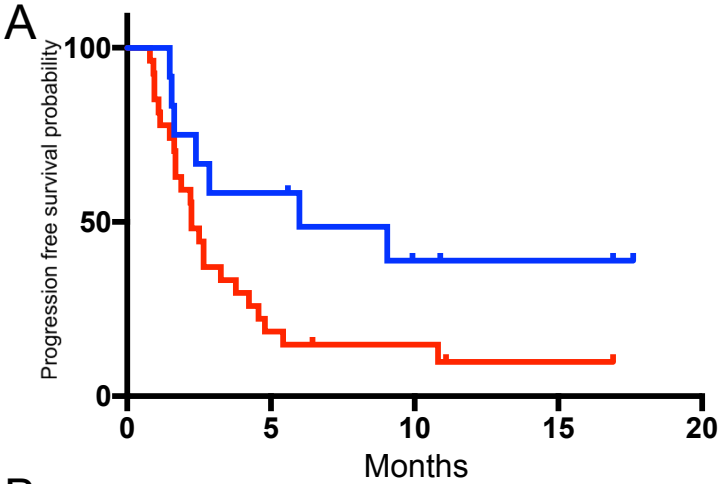


**Supplemental Table 1**

	<b><i>N = 41 (%)</i></b>
<b><i>KRAS mutation</i></b>	<b>34 (83)</b>
G12D	15 (44)
G12R	9 (26)
G12V	5 (15)
G12C	3 (9)
G12I	1 (3)
Q61R	1 (3)
<b><i>TP53 mutation</i></b>	<b>27 (66)</b>
<b><i>CDKN2A mutation</i></b>	<b>12 (29)</b>
<b><i>SMAD4 mutation</i></b>	<b>11 (27)</b>
<b><i>Germline mutation</i></b>	<b>9 (21)</b>
BRCA1	1 (11)
BRCA2	3 (33)
NF1	1 (11)
APC	2 (22)
ATM	1 (11)
MLH1	1 (11)

**Supplemental Figure 1**



Gene	status	mPFS (mo)	p	HR
TP53	wild type	6.0	0.039	0.43 (0.21 to 0.88)
	mutated	2.2		
SMAD4	wild type	3.1	0.11	0.55 (0.23 to 1.31)
	mutated	1.6		
CDKN2A	wild type	3.3	0.11	0.56 (0.24 to 1.28)
	mutated	2.1		