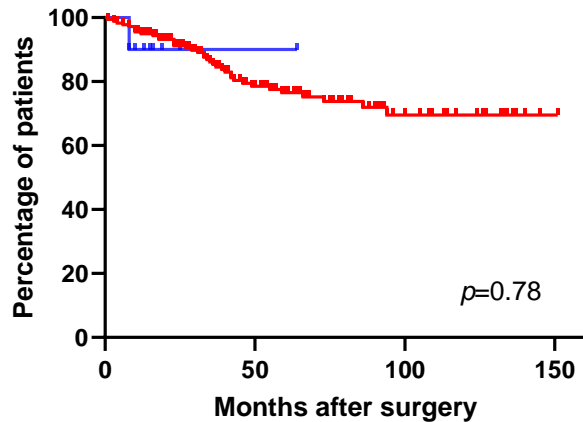


# Disease-free survival

## Post-NAC Alb

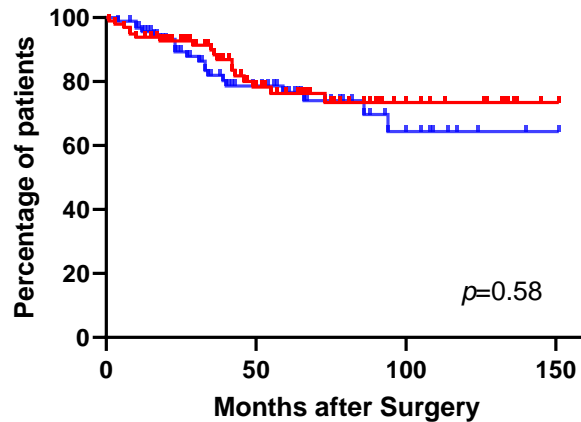
- High post-NAC Alb (n=181)
- Low post-NAC Alb (n=10)



HR:0.78 (95%CI:0.08-7.29)

## Post-NAC NLR

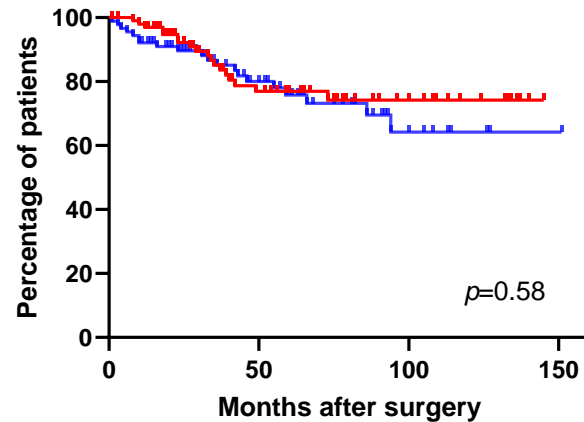
- High post-NAC NLR (n=99)
- Low post-NAC NLR (n=92)



HR:0.83 (95%CI:0.44-1.59)

## Post-NAC BMI

- High post-NAC BMI (n=102)
- Low post-NAC BMI (n=89)



HR:0.83 (95%CI:0.44-1.58)