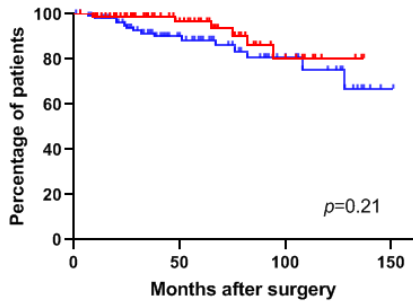


# Disease-specific survival

## Pre-NAC PNI

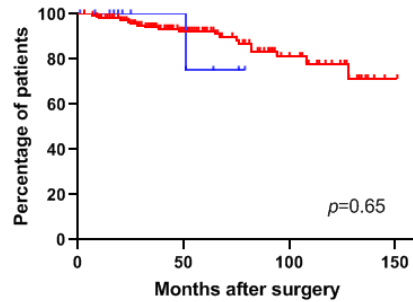
- High pre-NAC PNI (n=82)
- Low pre-NAC PNI (n=109)



HR:0.57 (95%CI:0.24-1.36)

## Pre-NAC Alb

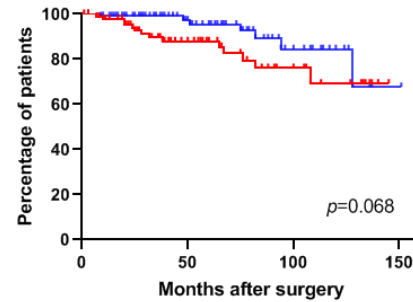
- High pre-NAC Alb (n=180)
- Low pre-NAC Alb (n=11)



HR:0.57 (95%CI:0.04-7.71)

## Pre-NAC NLR

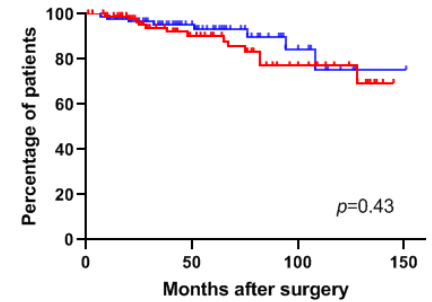
- High pre-NAC NLR (n=90)
- Low pre-NAC NLR (n=101)



HR:2.33 (95%CI:0.96-5.36)

## Pre-NAC BMI

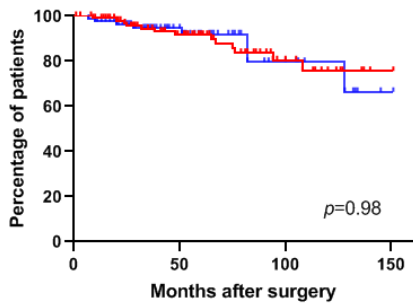
- High pre-NAC BMI (n=100)
- Low pre-NAC BMI (n=91)



HR:1.42 (95%CI:0.60-3.36)

## Post-NAC PNI

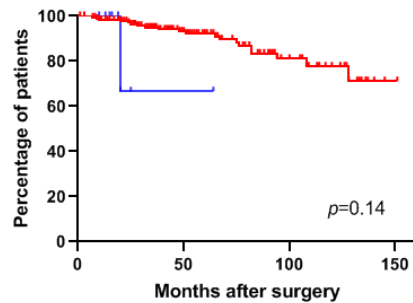
- High post-NAC PNI (n=108)
- Low post-NAC PNI (n=83)



HR:1.01 (95%CI:0.41-2.45)

## Post-NAC Alb

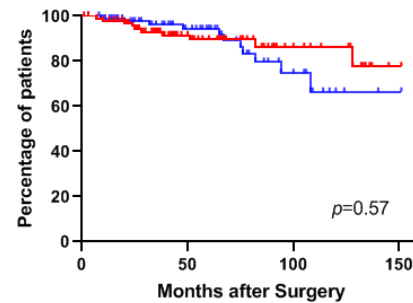
- High post-NAC Alb (n=181)
- Low post-NAC Alb (n=10)



HR:0.26 (95%CI:0.01-11.7)

## Post-NAC NLR

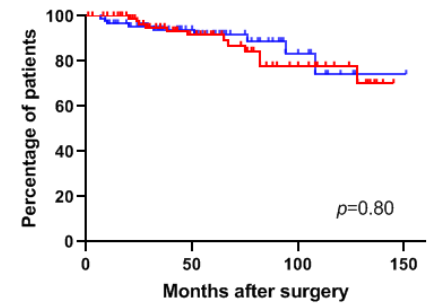
- High post-NAC NLR (n=99)
- Low post-NAC NLR (n=92)



HR:0.78 (95%CI:0.33-1.85)

## Post-NAC BMI

- High post-NAC BMI (n=102)
- Low post-NAC BMI (n=89)



HR:1.12 (95%CI:0.47-2.64)