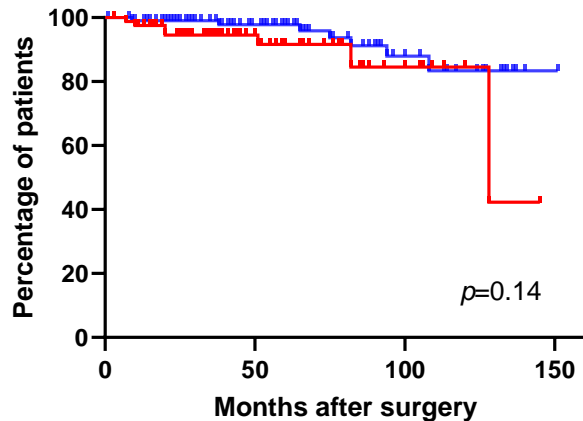


# Disease-specific survival

**$\Delta$ Alb**

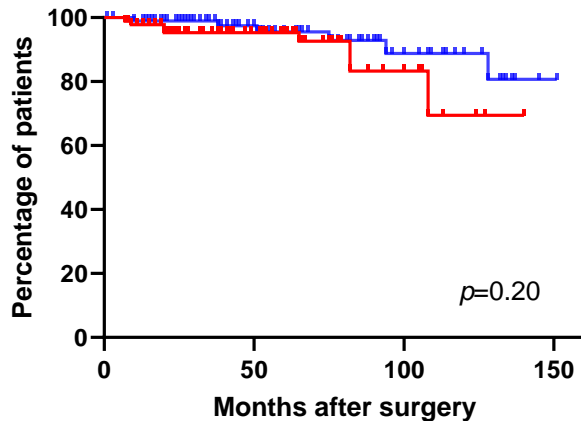
- High  $\Delta$ Alb (n=82)
- Low  $\Delta$ Alb (n=109)



HR:2.09 (95%CI:0.68-6.43)

**$\Delta$ NLR**

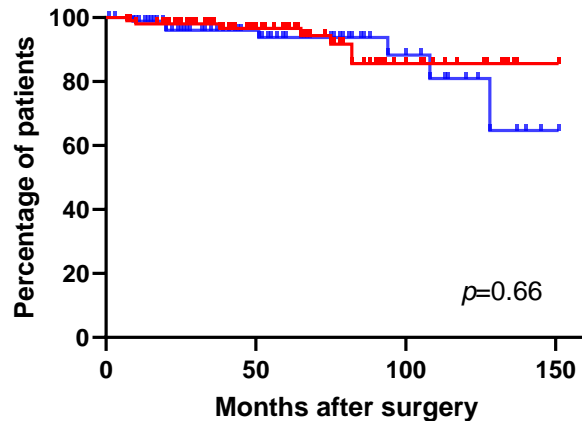
- High  $\Delta$ NLR (n=91)
- Low  $\Delta$ NLR (n=100)



HR:1.92 (95%CI:0.66-5.58)

**$\Delta$ BMI**

- High  $\Delta$ BMI (n=101)
- Low  $\Delta$ BMI (n=90)



HR:0.79 (95%CI:0.27-2.28)