

Fig. S2.

A.

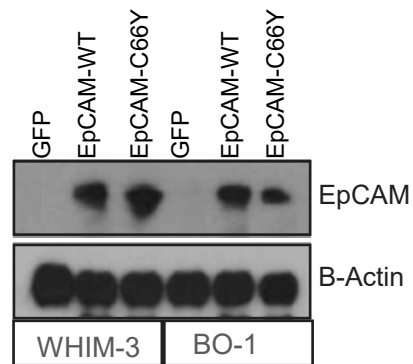
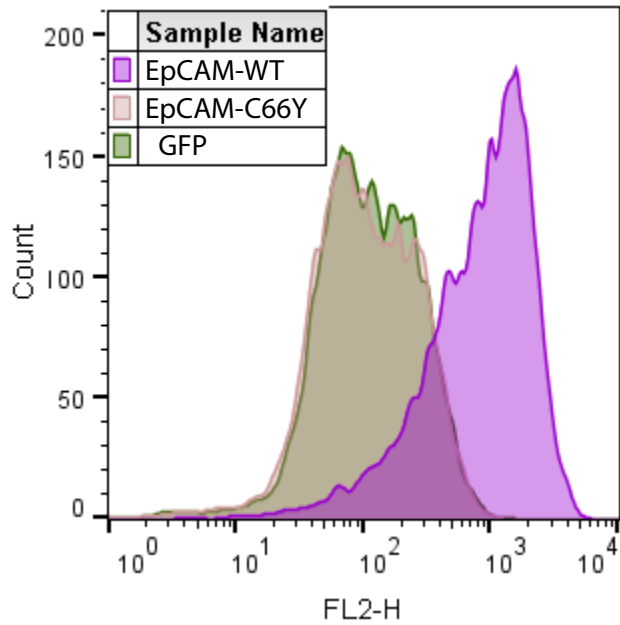


Figure S2A. Wild type, but not C66Y EpCAM, inhibits tumor cell invasion in vitro and in vivo. WHIM-3 and PyMT BO-1 breast cancer cell lines were transduced with GFP, wild type EpCAM, or C66Y EpCAM. Immunoblot data is shown.

B. WHIM-3: EpCAM flow cytometry



C. BO-1: EpCAM flow cytometry

