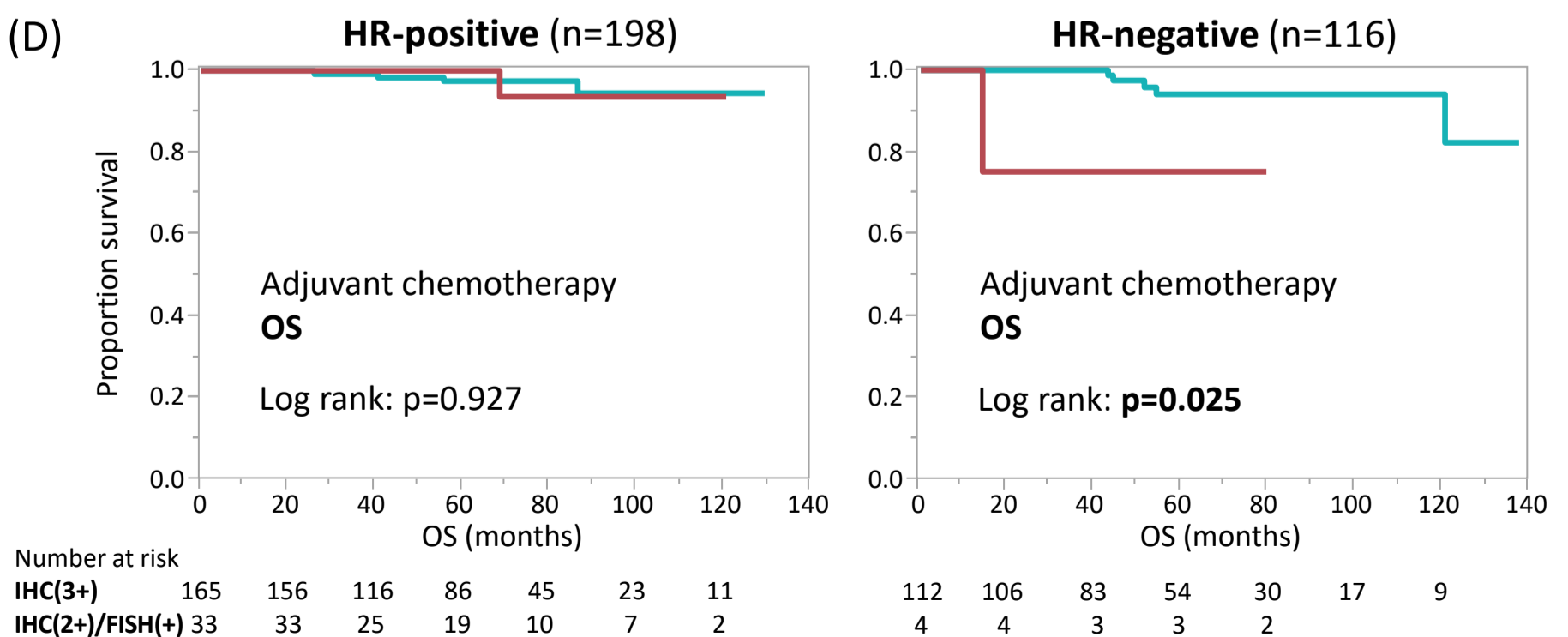
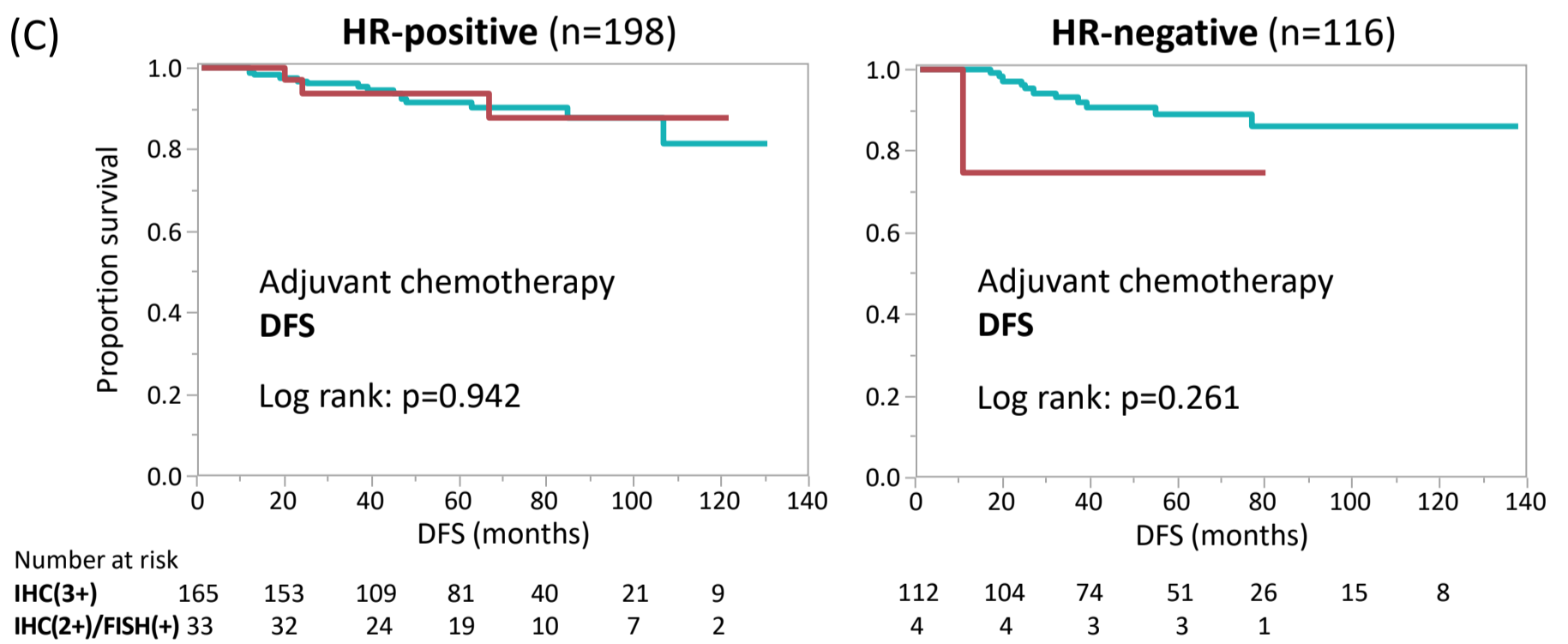
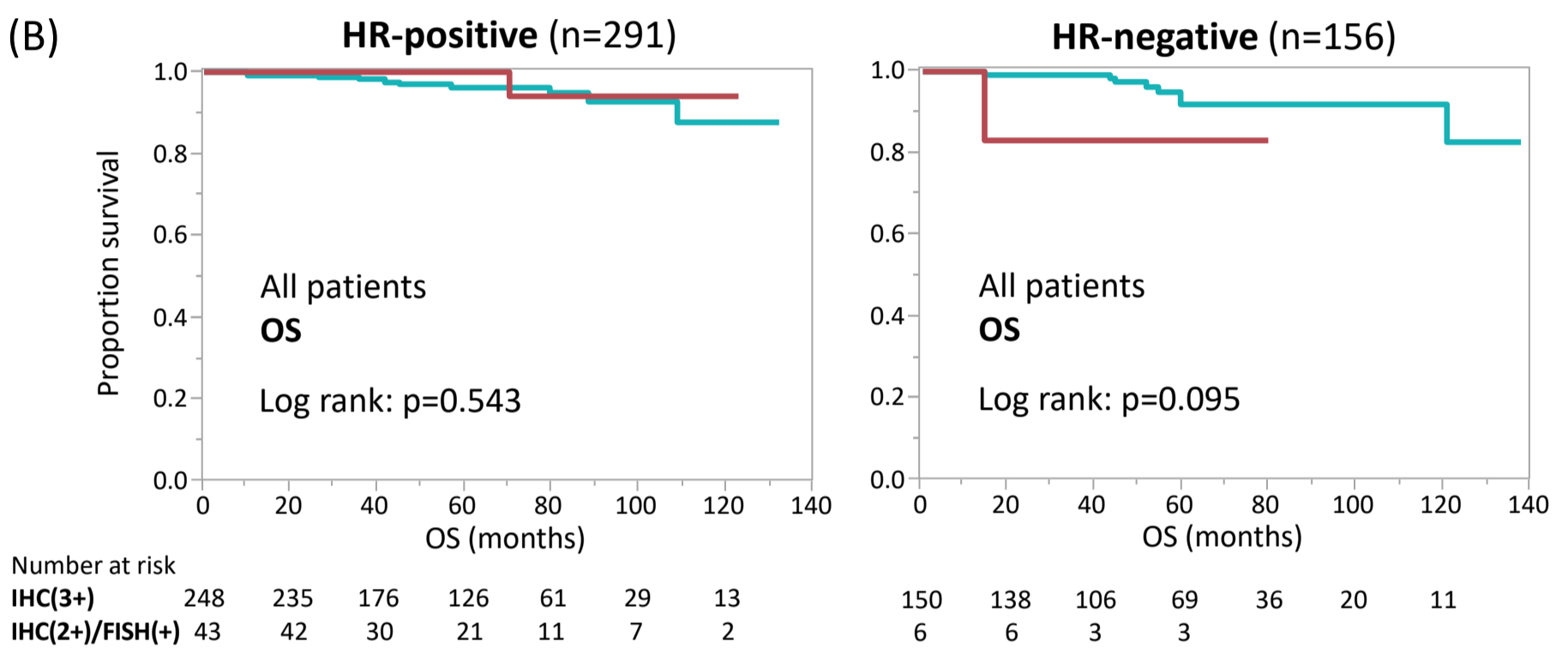
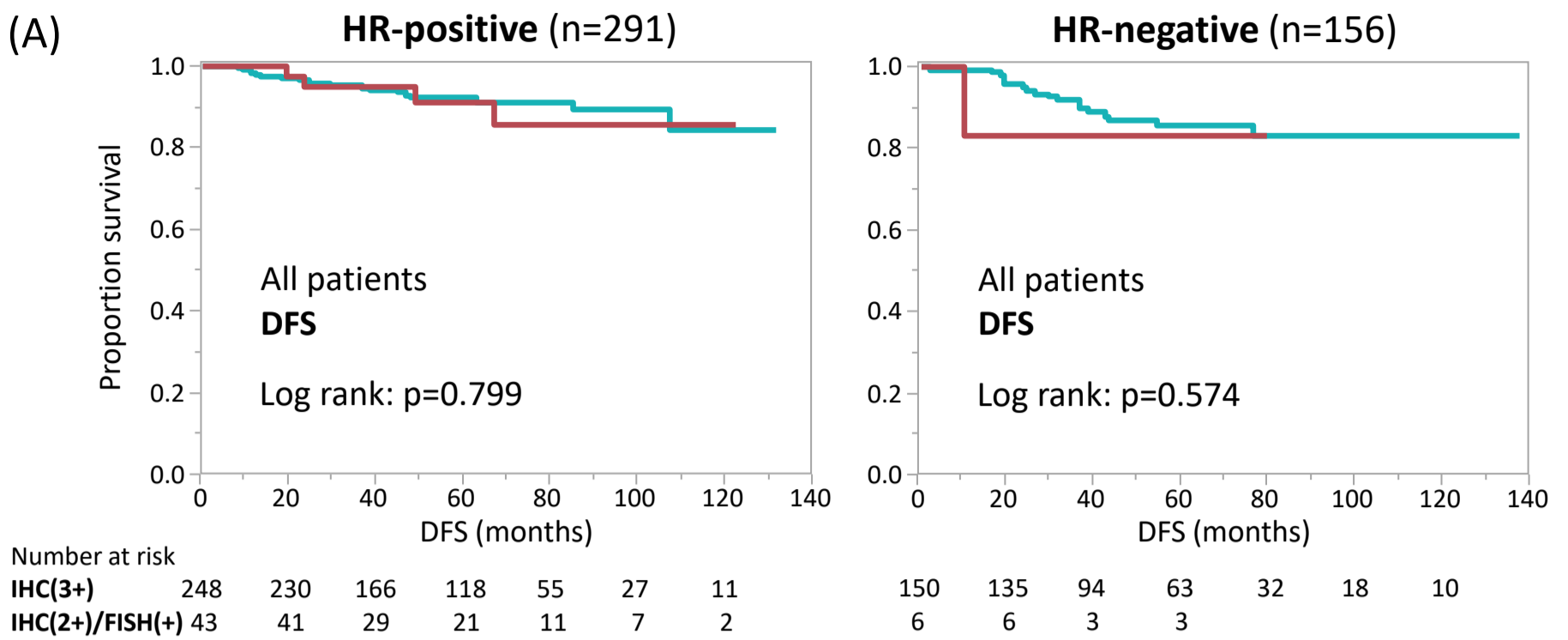


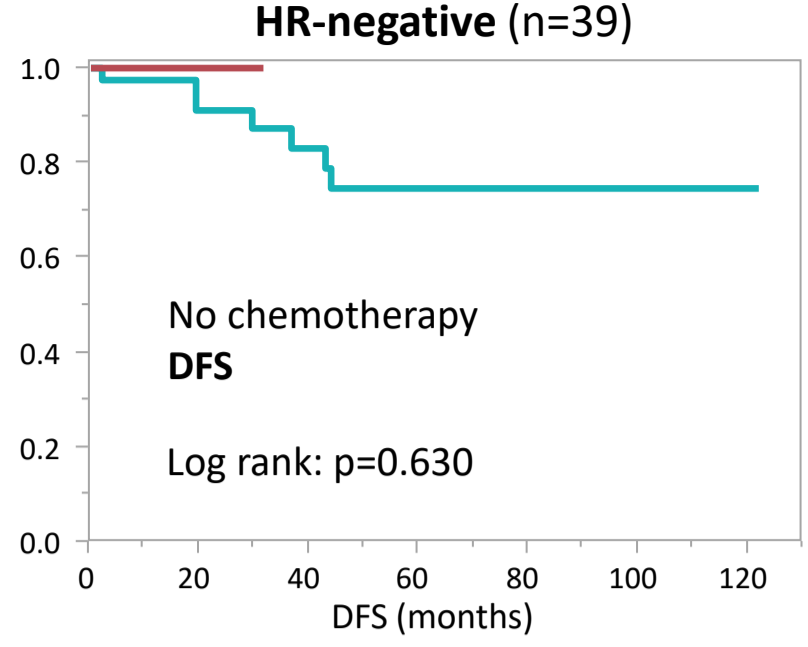
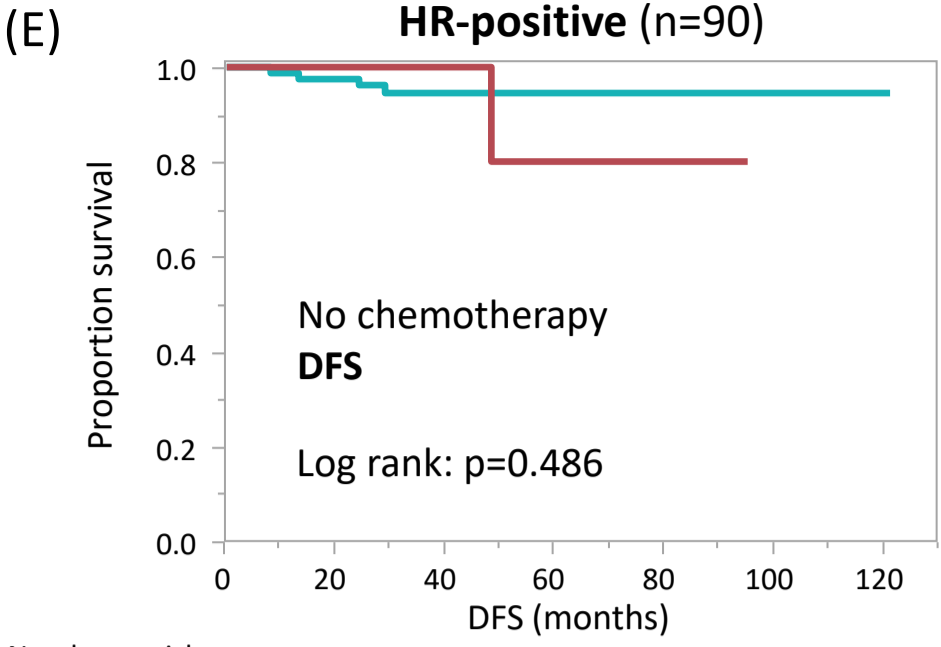
Additional file 4. Patient outcomes stratified by hormone receptor and HER2 status.

A-B: DFS (A) and OS (B) after stratifying for hormone receptor (HR) status in 447 patients. Green and red lines indicate patients with IHC(3+) and IHC(2+)/FISH(+) tumors, respectively.

C-D: DFS (C) and OS (D) in the 314 patients who received adjuvant chemotherapies in combination with anti-HER2 drugs.

E-F: DFS (E) and OS (F) in the 129 patients who did not receive any chemotherapy.

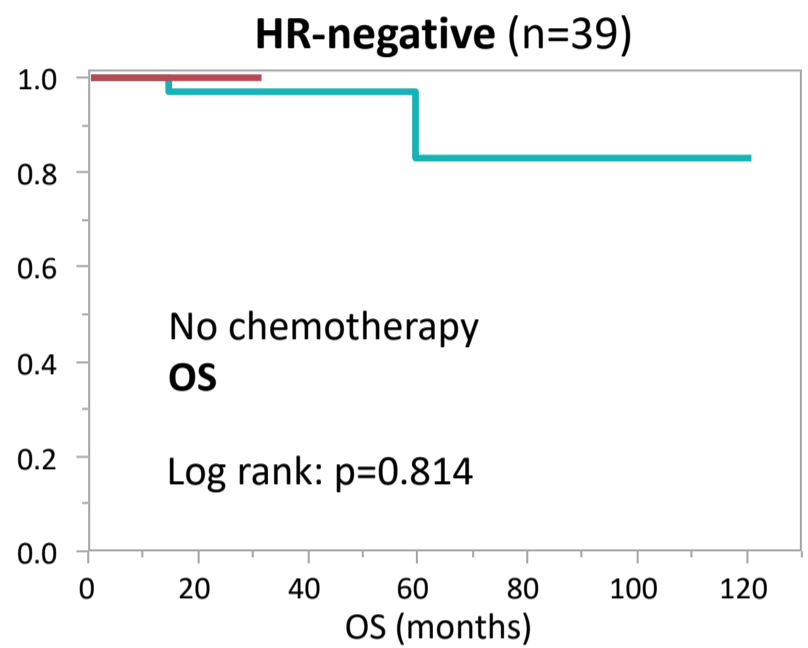
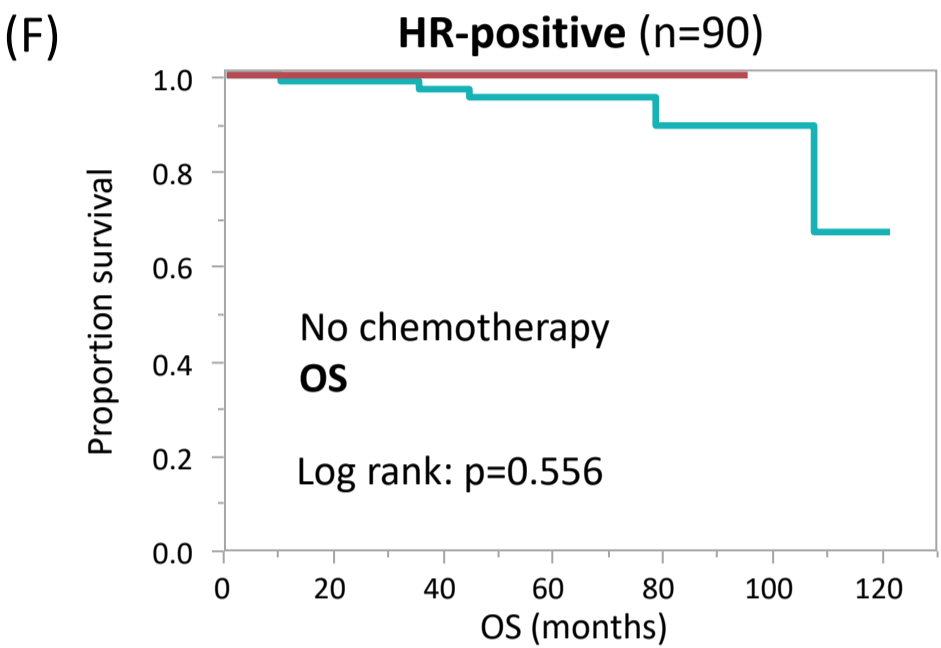




Number at risk

IHC(3+)	80	75	56	35	15	9	3
IHC(2+)/FISH(+)	10	10	6	3	2		

	37	30	20	11	7	4	2
	2	2					



Number at risk

IHC(3+)	80	77	59	38	16	9	3
IHC(2+)/FISH(+)	10	10	6	3	2		

	37	32	24	14	7	4	2
	2	2					