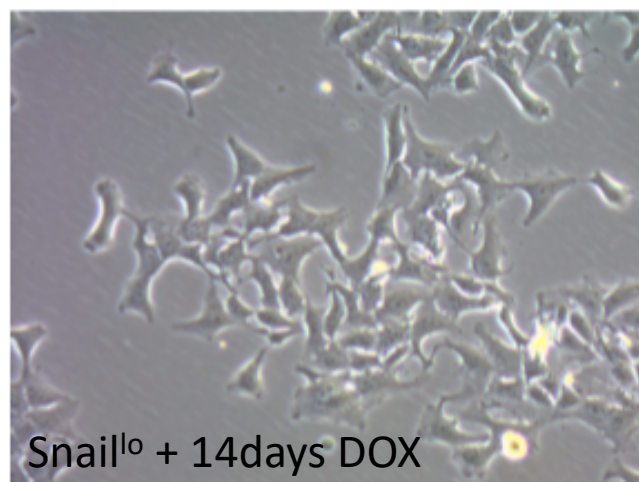
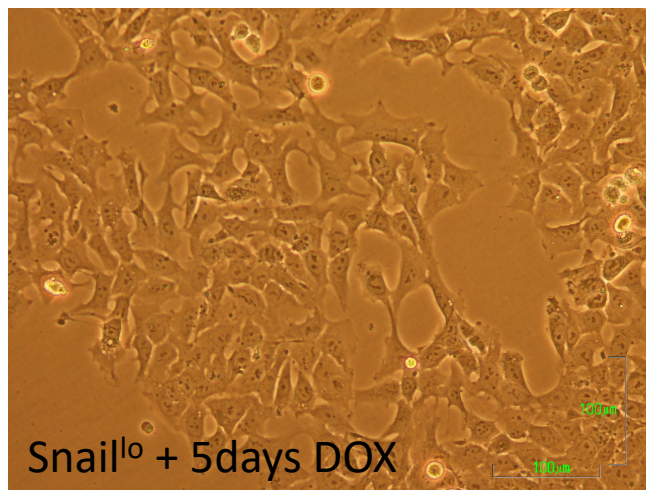


qPCR Snail^{lo} 5d vs 14d

***p<0.001

***p<0.0001



Supplementary Figure 3 - Comparison of 5 and 14 days DOX incubation of Snail-lo

(A) Phase contrast images of Snail-lo cells incubated with DOX for 5 or 14 days. (B) Expression levels of genes shown at 5 and 14 days in the presence (+) and absence (-) of DOX.

