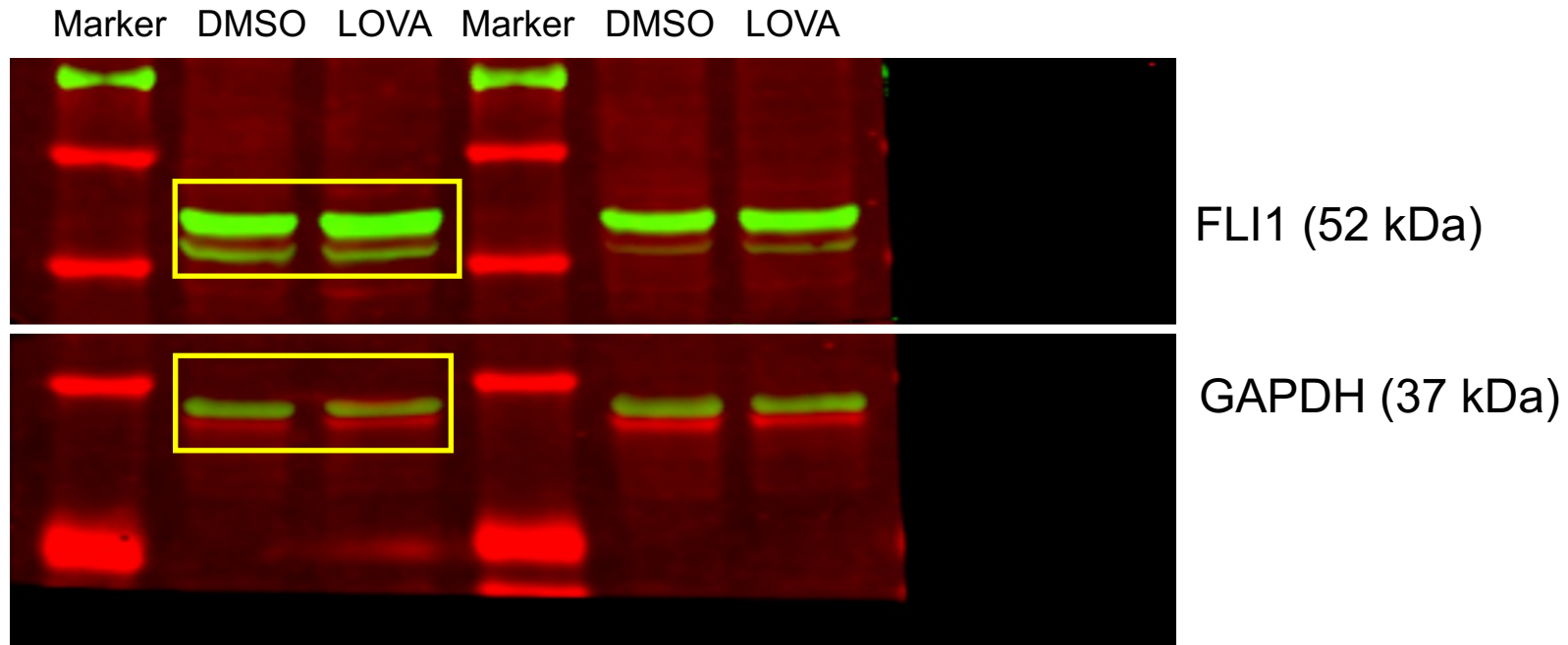


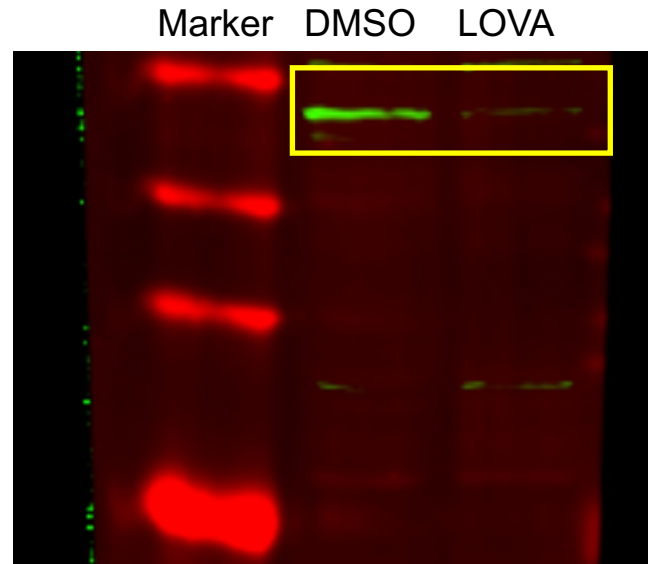
Original/unprocessed western blot images

Fig. 1d

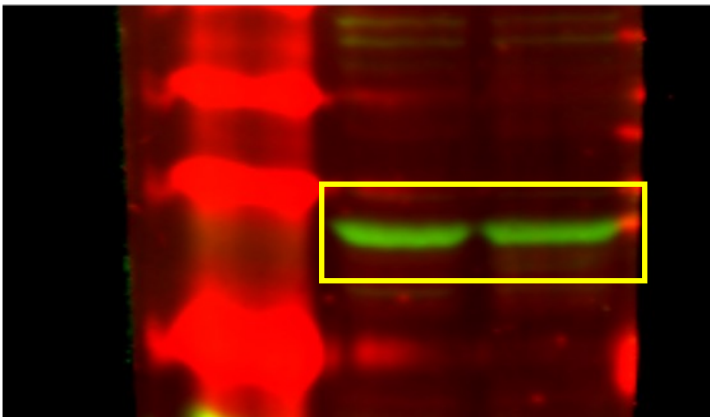


Supplementary Figure 5. The full-length blots of FLI1 and GAPDH. The same membranes were cut or/and hybridized with different antibodies according to the molecular weights.

Fig. 4b

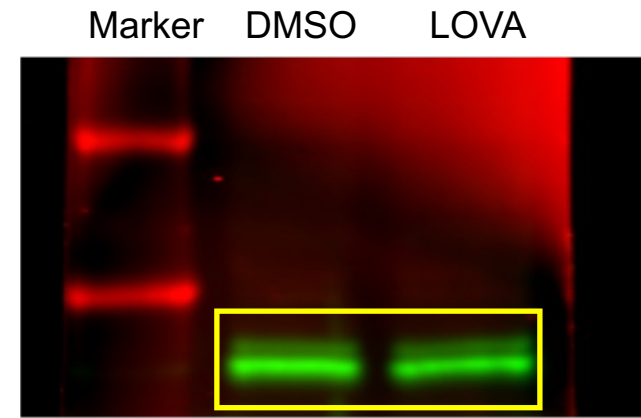


FAM83A (47 kDa)

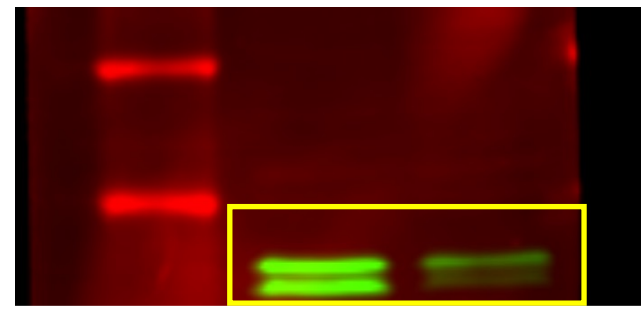


GAPDH (37 kDa)

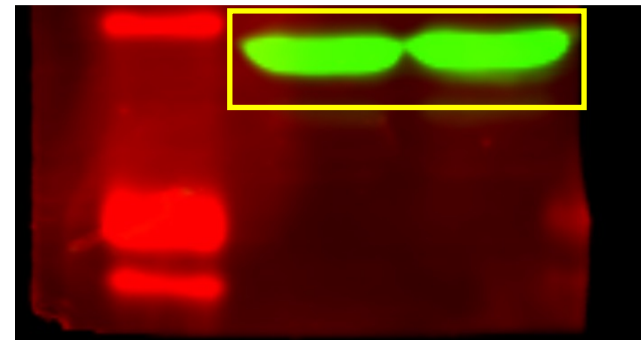
Fig. 4c



ERK (42 kDa)



P-ERK (42 kDa)



GAPDH (37 kDa)

Supplementary Fig. 6. The full-length blots of FAM83A ERK, DDIT4, P-ERK and GAPDH. The same membranes were cut or/and hybridized with different antibodies according to the molecular weights.

Fig. 4f

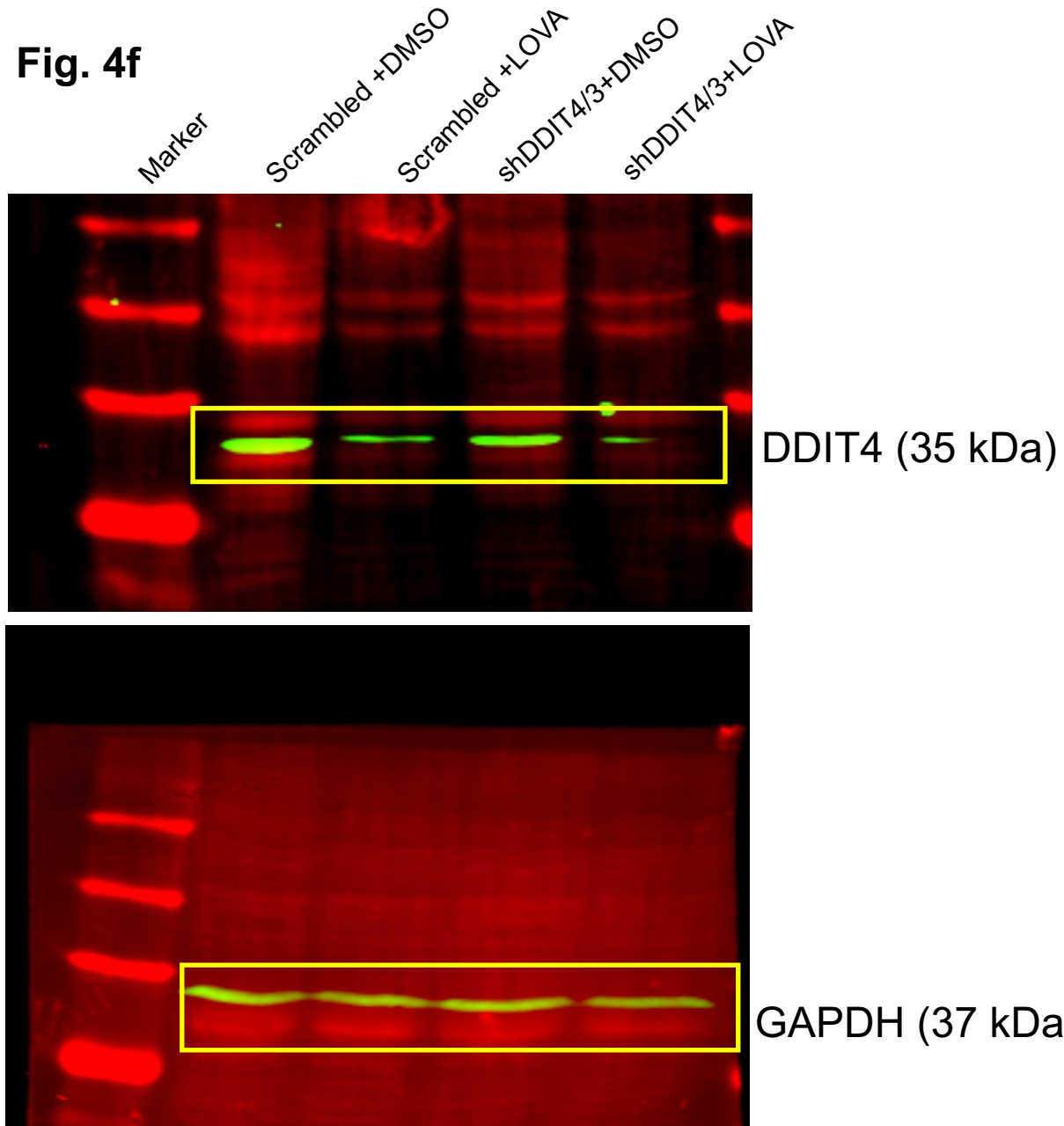
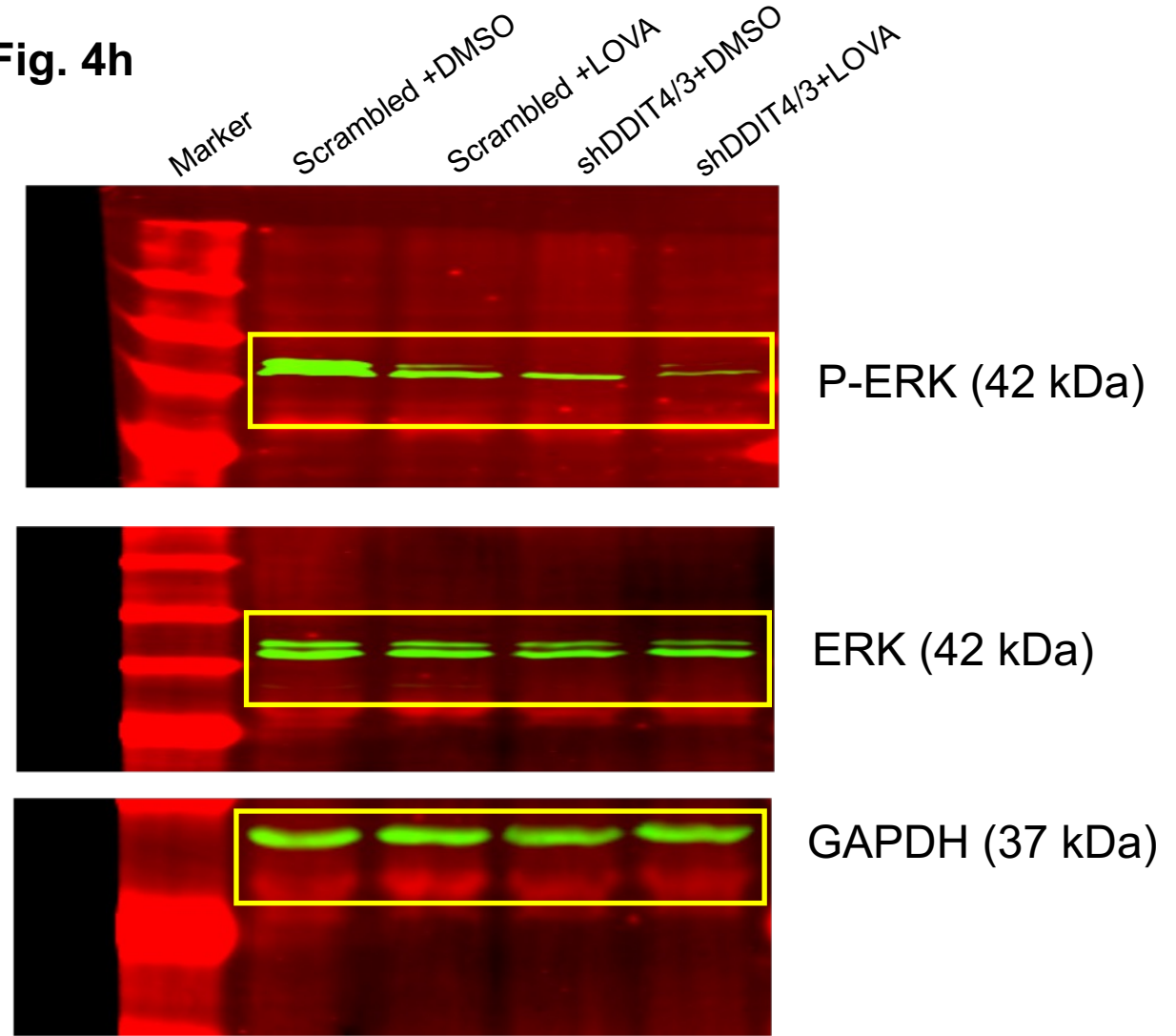


Fig. 4h



Supplementary Fig. 6. The full-length blots of FAM83A ERK, DDIT4, P-ERK and GAPDH. The same membranes were cut or/and hybridized with different antibodies according to the molecular weights.

Fig. 5b

Marker
DMSO
LOVA

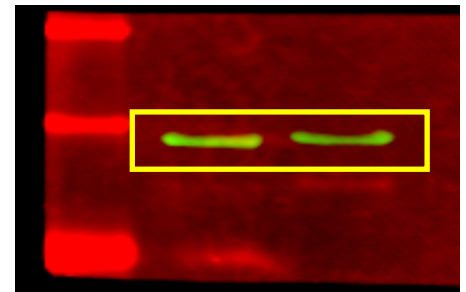
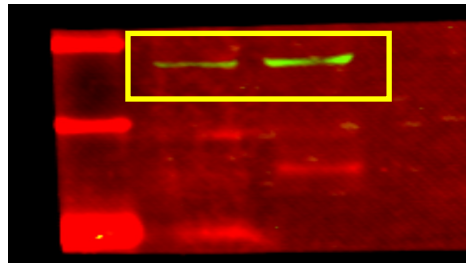
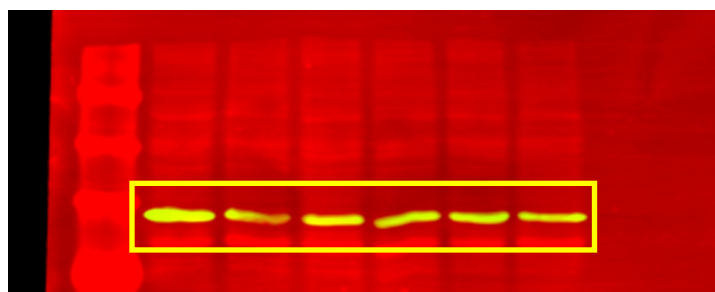
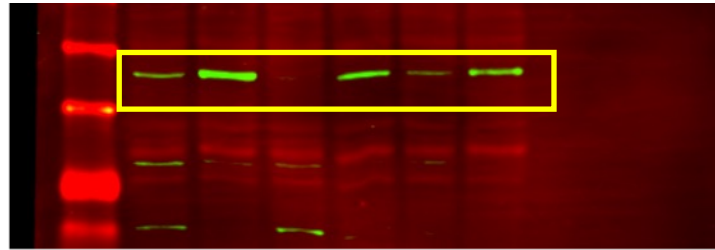


Fig. 5d

Marker
Scrambled+DMSO
Scrambled+Lova
shKLF2/2+DMSO
shKLF2/2+Lova
shKLF2/3+DMSO
shKLF2/3+Lova

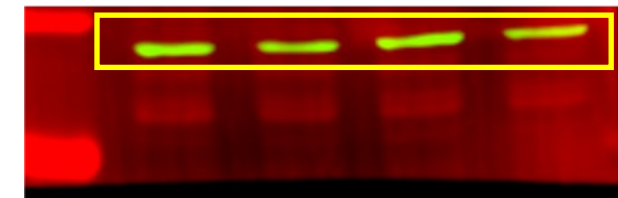
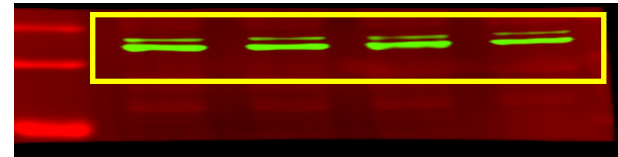
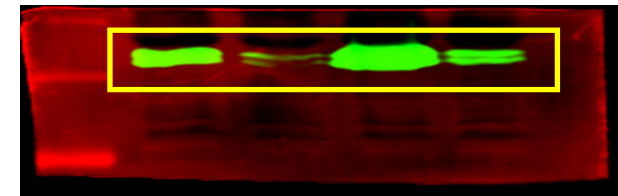


KLF2 (37 kDa)

GAPDH (37 kDa)

Fig. 5h

Marker
Scrambled+DMSO
Scrambled+Lova
shKLF2/2+DMSO
shKLF2/2+Lova



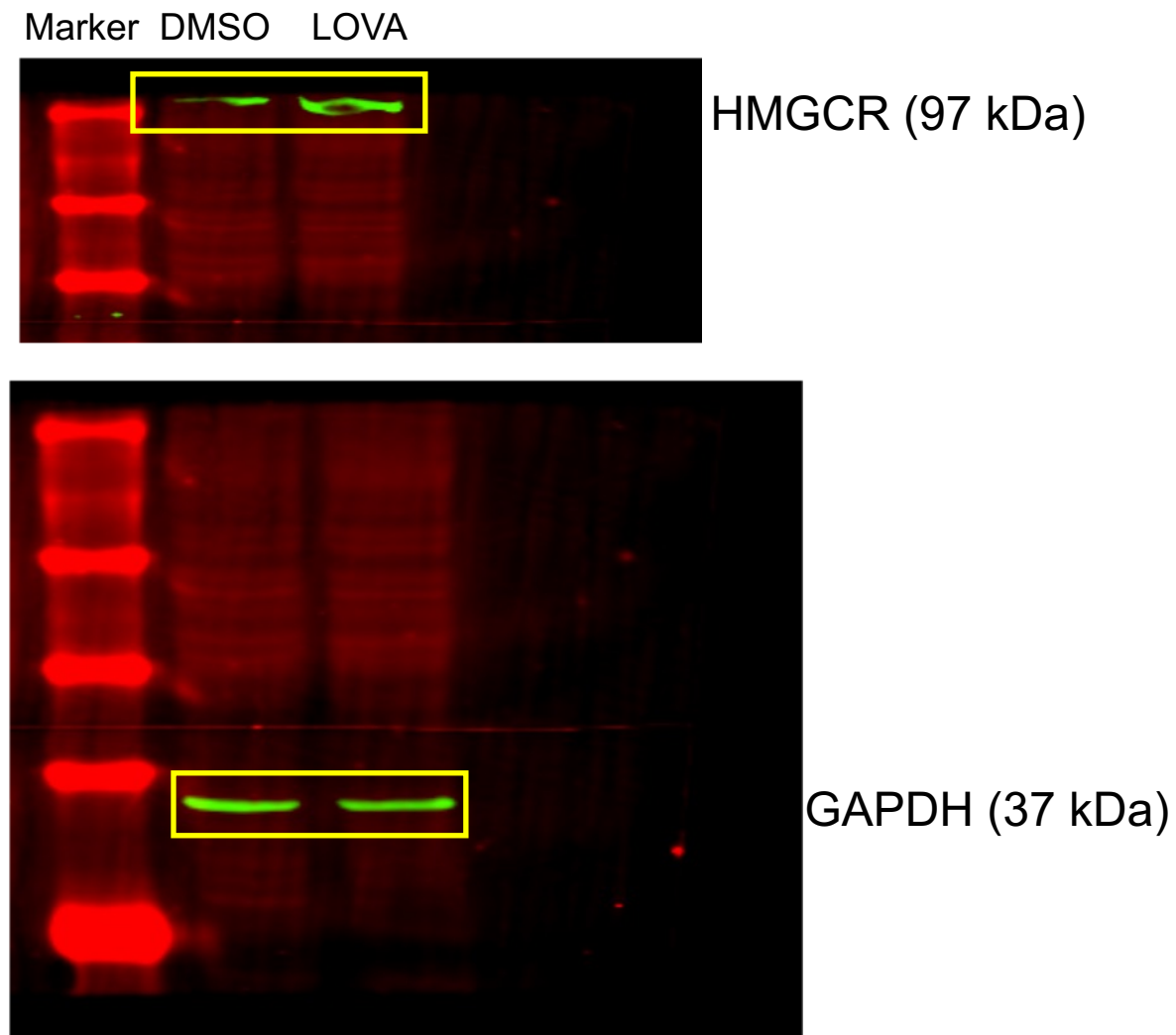
P-ERK (42 kDa)

ERK (42 kDa)

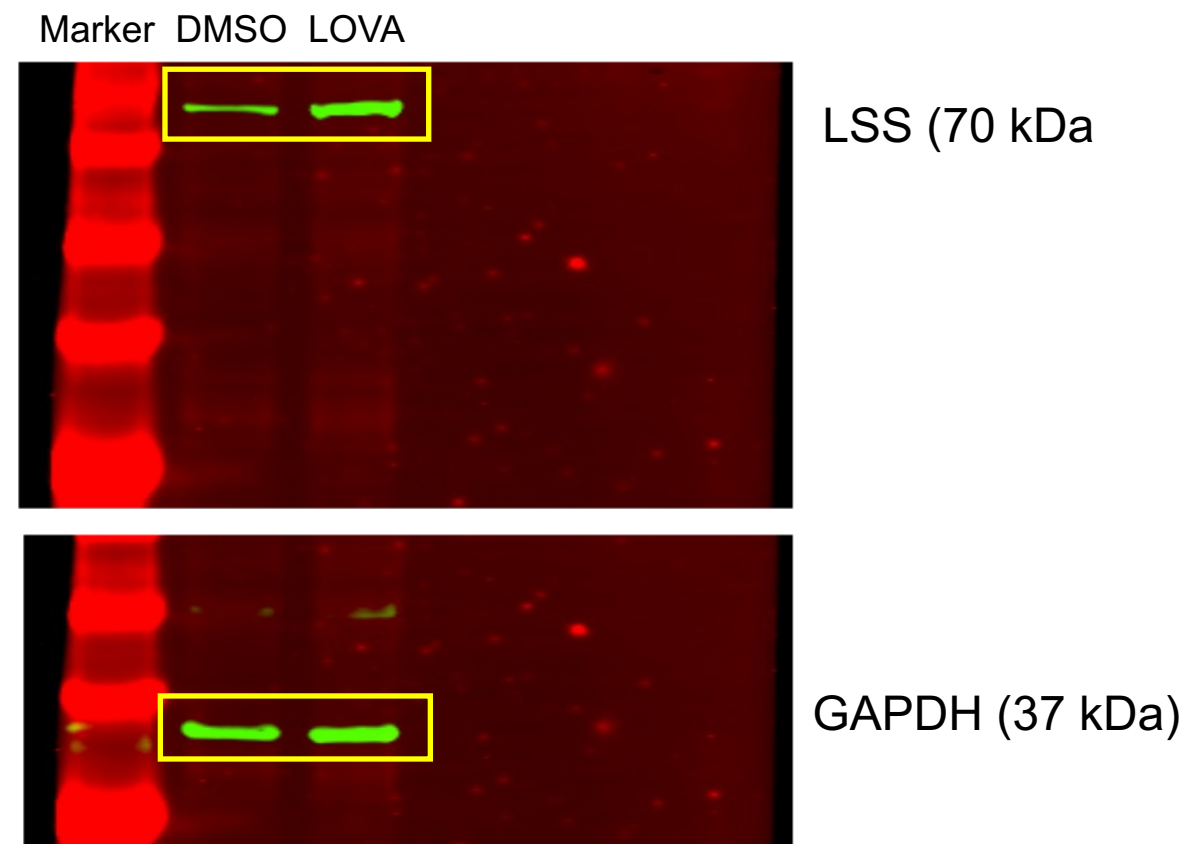
GAPDH (37 kDa)

Supplementary Fig. 7. The full-length blots of KLF2, ERK, P-ERK and GAPDH. The same membranes were cut or/and hybridized with different antibodies according to the molecular weights.

Supplementary Fig. 1a

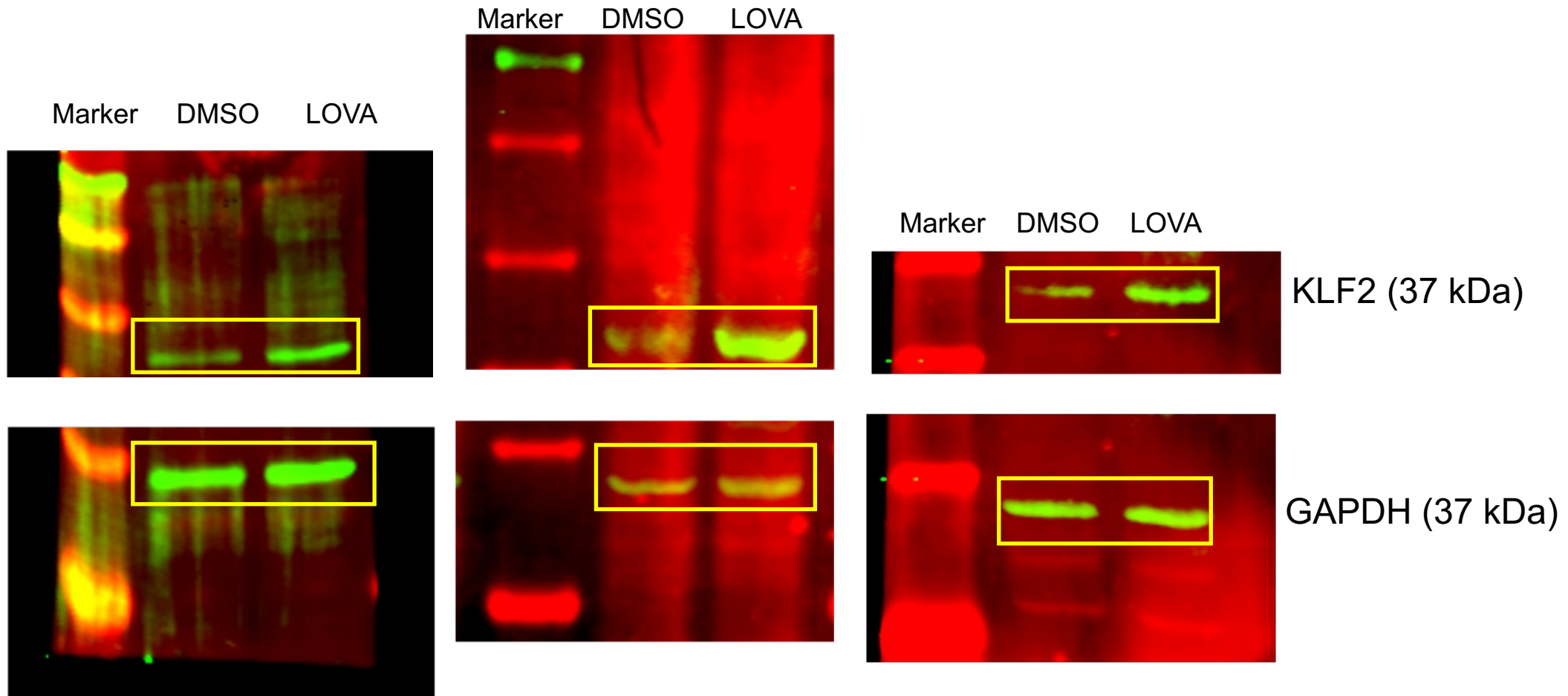


Supplementary Fig. 1b



Supplementary Fig. 8. The full-length blots of HMGCR, LSS, and GAPDH. The same membranes were cut or/and hybridized with different antibodies according to the molecular weights.

Supplementary Fig. 3



Supplementary Fig. 9. The full-length blots of KLF2 and GAPDH. The same membranes were cut or/and hybridized with different antibodies according to the molecular weights.