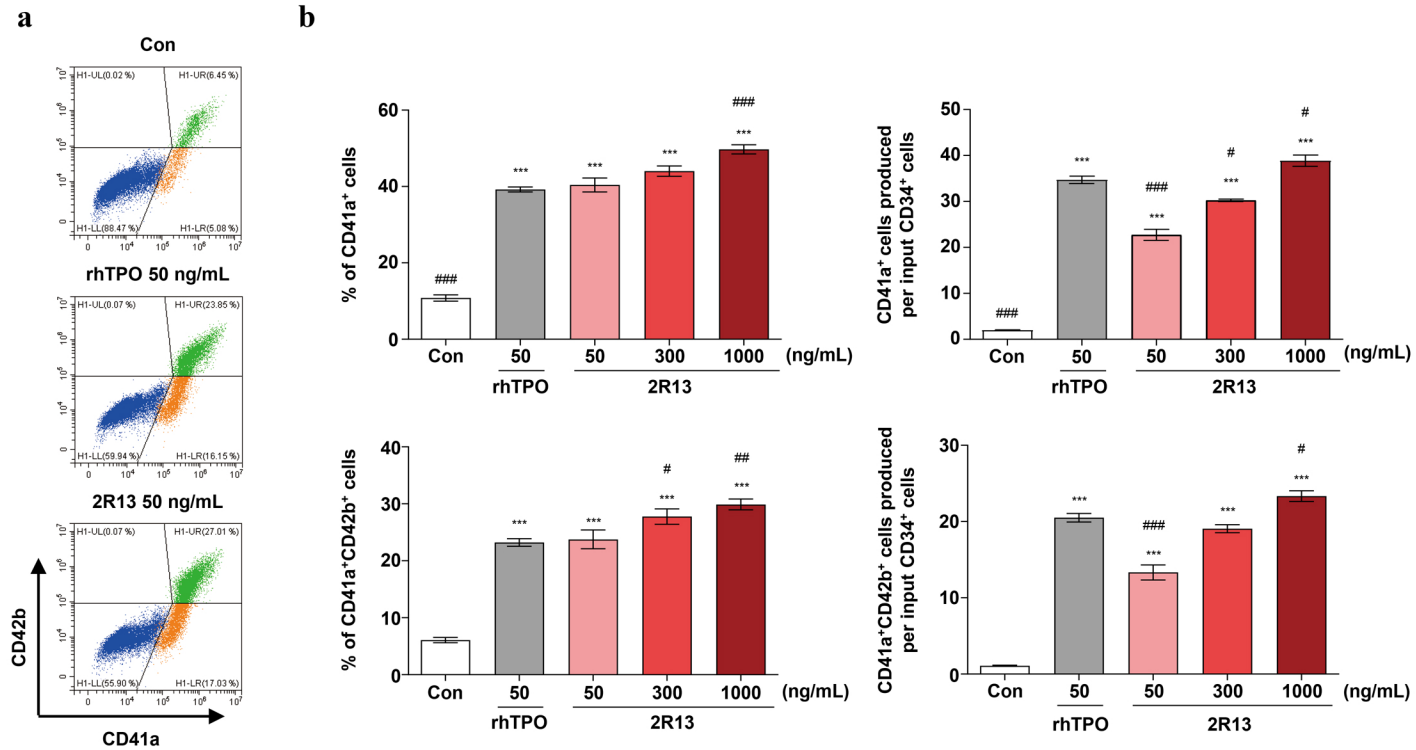


Supplementary Fig. 1 Effect of 2R13 on MK differentiation in PB-CD34⁺ cells isolated from donor 2



PB-CD34⁺ cells derived from donor 2 were stimulated with rhTPO or 2R13 at the indicated concentrations for 11 days. **a** Representative flow cytometric analysis of PB-CD34⁺ cell differentiation. **b** Percentage and number of CD41a⁺ and CD41a⁺CD42b⁺ cells. The number of cells produced per input of PB-CD34⁺ cells was calculated by multiplying the number of total nucleated cells with the percentage of CD41a⁺ or CD41a⁺CD42b⁺ cells. Data are the mean \pm SD ($n = 3$). One-way ANOVA was used for statistical analysis. *** $p < 0.001$ vs control; # $p < 0.05$, ## $p < 0.01$, and ### $p < 0.001$ vs rhTPO.