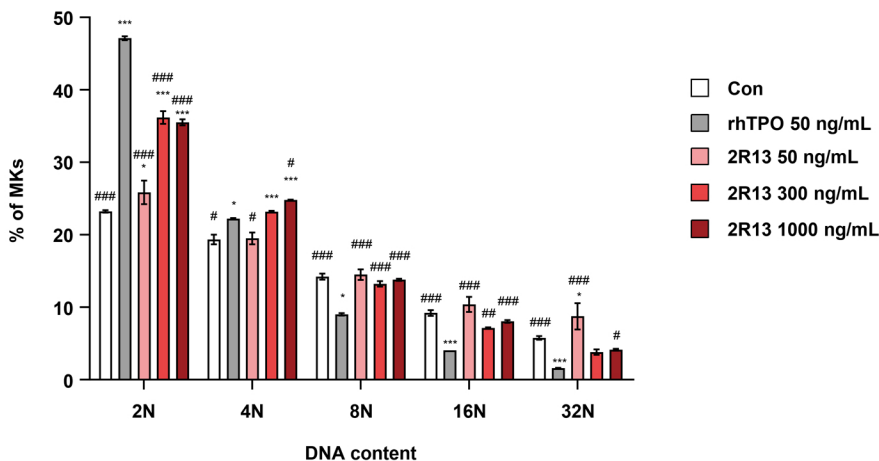
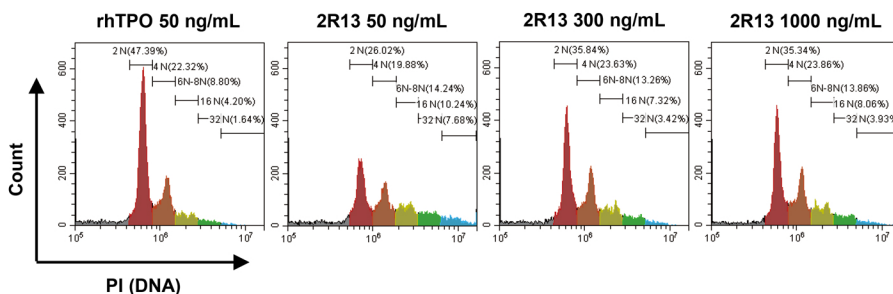


Supplementary Fig. 3 Effect of 2R13 on MK polyploidization in PB-CD34<sup>+</sup> cells isolated from donor 2

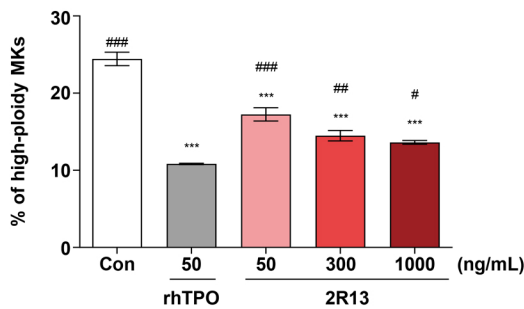
**a**



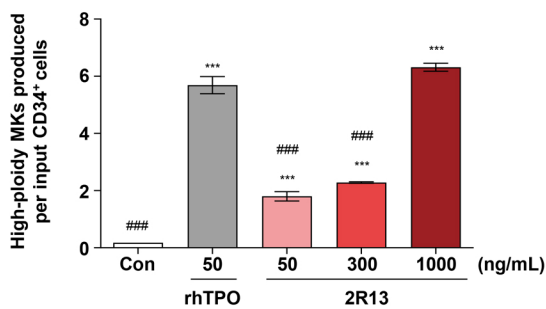
**b**



**c**



**d**



PB-CD34<sup>+</sup> cells derived from donor 2 were stimulated with rhTPO or 2R13 at the indicated concentrations for 13 days. **a** Ploidy status of CD41a<sup>+</sup> cells. **b** Representative flow cytometric profile of ploidy levels. **c, d** Percentage and number of high-ploidy ( $\geq 8N$ ) MKs. The number of cells produced per input of PB-CD34<sup>+</sup> cells was calculated by multiplying the number of total nucleated cells with the percentage of high-ploidy CD41a<sup>+</sup> cells. Data are the mean  $\pm$  SD ( $n = 3$ ). One-way and two-way ANOVA were used for statistical analysis. \* $p < 0.05$  and \*\*\* $p < 0.001$  vs control; # $p < 0.05$ , ### $p < 0.01$ , and #### $p < 0.001$  vs rhTPO.