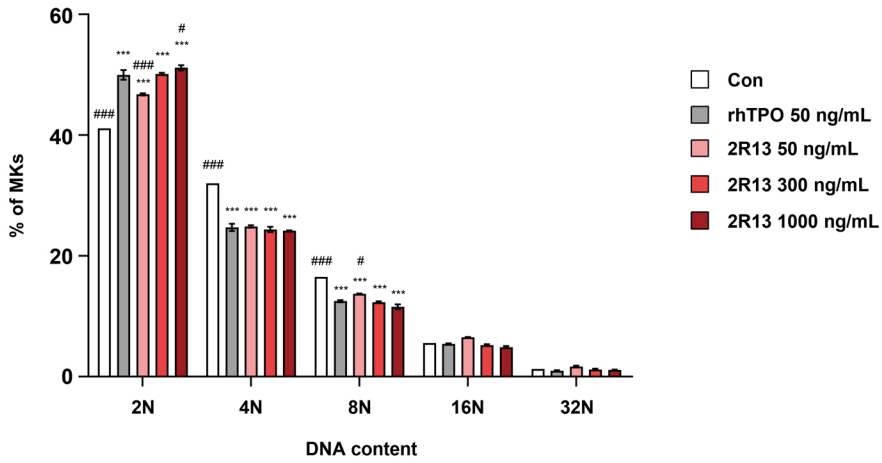
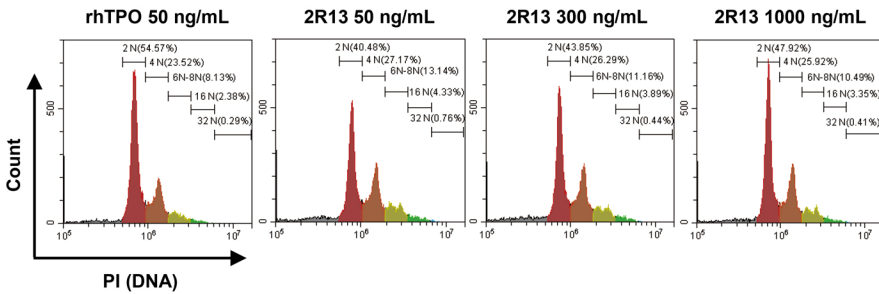


Supplementary Fig. 4 Effect of 2R13 on MK polyploidization in PB-CD34⁺ cells isolated from donor 3

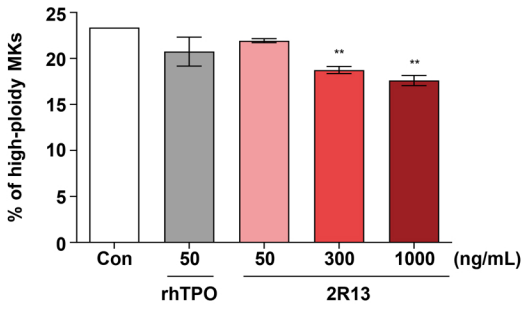
a



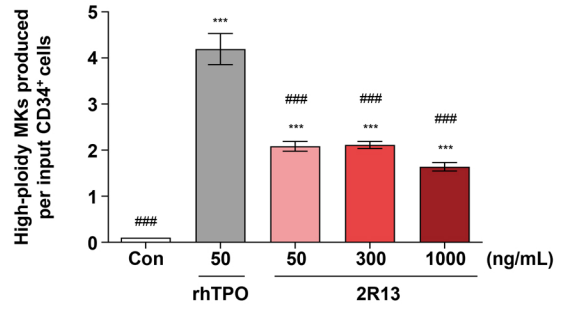
b



c



d



PB-CD34⁺ cells derived from donor 3 were stimulated with rhTPO or 2R13 at the indicated concentrations for 13 days. **a** Ploidy status of CD41a⁺ cells. **b** Representative flow cytometric profile of ploidy levels. **c, d** Percentage and number of high-ploidy (≥8N) MKs. The number of cells produced per input of PB-CD34⁺ cells was calculated by multiplying the number of total nucleated cells with the percentage of high-ploidy CD41a⁺ cells. Data are the mean ± SD (*n* = 3). One-way and two-way ANOVA were used for statistical analysis. ***p* < 0.01 and ****p* < 0.001 vs control; #*p* < 0.05 and ###*p* < 0.001 vs rhTPO.