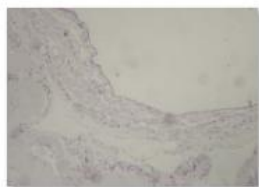


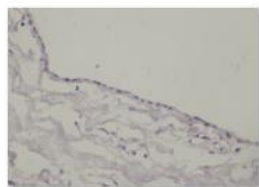
HIC-1



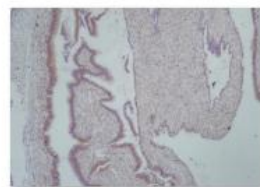
BENIGN10-LX-P
SMD8.tif



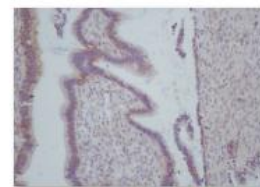
BENIGN20-LX-P
SMD8.tif



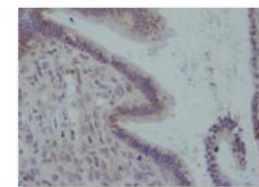
BENIGN-40-LX-
PSMD8.tif



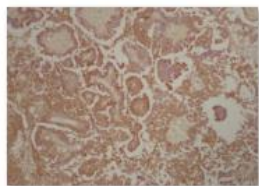
BORDER10-PS
MD8.tif



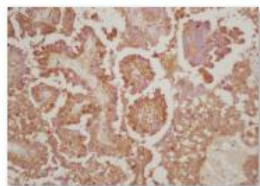
BORDER20-LX-
PSMD8.tif



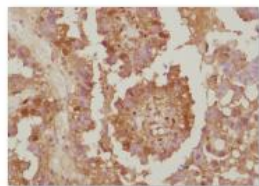
BORDER40-LX-
PSMD8.tif



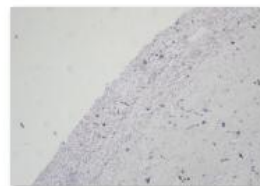
CANCER(10)1-1
0-LX-PSMD8.tif



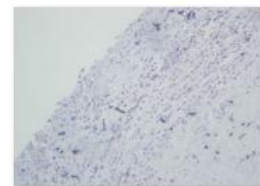
CANCER(20)1-2
0-LX-PSMD8.tif



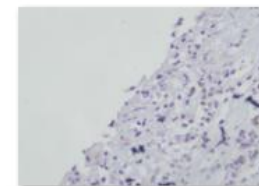
CANCER(40)1-4
0-LX-PSMD8.tif



NORMAL10-LX-
PSMD8.tif



NORMAL20-LX-
PSMD8.tif



NORMAL40-LX-
PSMD8.tif

HIC-2

NC	COLOR (0-3)	AREA (0-4)	SCOI	Gro	FIG	FIG	Gra	Lymphnc	ag	Ag	Survival t	Dea	Tim			
	3	3	9	2	IIIc	2	2	2	54	1	death: 14	1	14			
	3	3	9	2	IV	2	2	2	51	1	death: 12	1	12			
	3	2	6	2	IIIc	2	2	1	63	2	death: 31	1	31			
	2	4	8	2	IIIc	2	2	2	62	2	death: 36	1	36			
	0	4	0	2	IIIc	2	1	2	62	2	death: 51	1	51			
	3	3	9	2	IIIc	2	1	2	48	1	death: 49	1	49			
	2	3	6	2	IIIc	2	1	1	63	2	death: 28	1	28			
	2	4	8	2	IIIc	2	2	1	63	2	24	1	24			
	2	4	8	2	IIIc	2	2	2	57	2	27	1	27			
	3	3	9	2	IIIc	2	2	2	71	2	death: 36	1	36			
	3	3	9	2	IIIc	2	1		45	1	death: 28	1	28			
	3	3	9	2	IIIc	2	2		77	2	death: 36	1	36			
	3	3	9	2	IIIc	2	1	1	52	1	death: 58	1	58			
	3	3	9	2	IIIc	2	1		64	2	death: 45	1	45			
	3	3	9	2	IIIc	2	1		78	2	death: 20	1	20			
	3	3	9	2	IIIc	2	2	2	28	1	26	1	26			
	2	3	6	2	IIIc	2	2	1	74	2	death: 31	1	31			
	3	3	9	2	III	2	1		53	1	death: 41	1	41			
	2	4	8	2	IIIc	2	2	1	71	2	death: 70	1	70			
	3	3	9	2	IIIc	2	2	2	43	1	death: 8	1	8			
	3	3	9	2	IIIc	2	2	2	42	1	death: 47	1	47			
	2	4	8	2	IIIc	2	2	1	46	1	death: 36	1	36			
	3	3	9	2	IIIc	2	2		51	1	loss	0				
	0	4	0	2	IIIc	2	2	2	59	2	loss	0				
	2	3	6	2	IIIc	2	2	2	60	2	loss	0				
	2	3	6	2	IIIc	2	2	1	55	2	70	0	70			
	3	2	6	2	IIIc	2	2	1	58	2	34	0	34			
	3	2	6	2	IIIc	2	2	1	49	1	78	0	78			
	2	3	6	2	IIIc	2	2		53	1	loss	0				
	3	2	6	2	IIIc	2	2		71	2	loss	0				
	2	3	6	2	IIIc	2	2	1	52	1	43	0	43			
	2	3	6	2	IIIc	2	2	2	39	1	36	0	36			
	2	3	6	2	IIIc	2	2	2	54	1	44	0	44			
	3	2	6	2	IIIc	2	2	2	42	1	34	0	34			
	2	4	8	2	IIIc	2	1	1	38	1	loss	0				
	3	3	9	2	IIIc	2	2	2	62	2	39	0	39			
	3	3	9	2	IIIc	2	2	2	50	1	32	0	32			
	3	3	9	2	IIIc	2	2	1	48	1	loss	0				
	3	3	9	2	IIIc	2	2	2	51	1	43	0	43			

HIC-3

A	B	C	D	E	F	G	H	I	J	K	L	M	N	O
NC	COLOR (0-3)	AREA (0-4)	SCOl	Gro	FIG	FIG	Gra	Lymphnc	ag	Ag	Survival t	Dea	Tim	
	3	3	9	2	IIIc	2	2	2	51	1	43	0	43	
	3	3	9	2	IIIc	2	2	2	49	1	loss	0		
	3	4	12	2	IIIc	2	2		48	1	43	0	43	
	2	3	6	2	IIIc	2	2		49	1	63	0	63	
	2	2	4	1	III	2	2	1	52	1	death : 23	1	23	
	2	2	4	1	IIIc	2	1		55	2	death : 77	1	77	
	2	2	4	1	IIIb	2	2	1	43	1	loss	0		
	2	2	4	1	IV	2	2	2	57	2	79	0	79	
	1	4	4	1	IIIb	2	1	2	46	1	104	0	104	
	1	3	3	1	IV	2	2	2	53	1	32	1	32	
	2	1	2	1	IIIc	2	1	1	69	2	46	0	46	
	1	3	3	1	IIIc	2	2	2	58	2	37	0	37	
	2	2	4	1	IIIc	2	1	1	69	2	121	1	121	
	2	2	4	1	IIIc	2	1	1	55	2	106	0	106	
	2	2	4	1	IIIc	2	2	2	40	1	44	1	44	
	2	1	2	1	IV	2	2	2	49	1	90	0	90	
	3	4	12	2	IA	1	1	1	64	2	69	0	69	
	2	4	8	2	Ib	1	1		70	2	72	0	72	
	3	3	9	2	Ila	1	1	1	62	2	loss	0		
	3	2	6	2	II	1	1	1	60	2	loss	0		
	2	4	8	2	Ic	1	1	1	55	2	62	0	62	
	2	4	8	2	I	1	2	1	48	1	75	0	75	
	3	3	9	2	Ia	1	1	1	74	2	67	0	67	
	0	4	0	2	Ic	1	1		32	1	27	1	27	
	2	2	4	1	IIb	1	2	1	54	1	death : 45	1	45	
	2	2	4	1	IIc	1	2	1	74	2	66	0	66	
	2	1	2	1	I c	1	2	1	53	1	123	1	123	
	0	3	0	1	Ia	1	2	1	51	1	111	0	111	
	2	1	2	1	Ia	1	1	1	58	2	100	1	100	
	2	2	4	1	Ia	1	1	1	40	1	loss	0		
	2	1	2	1	IA	1	1	1	35	1	43	1	43	
	1	4	4	1	Ic	1	2	1	47	1	83	0	83	
	1	3	3	1	Ic	1	1	1	45	1	loss	0		
	0	4	0	1	Ic	1	2		63	2	85	0	85	
	2	2	4	1	IIA	1	2	1	65	2	32	1	32	
	2	2	4	1	IIc	1	1	1	54	1	loss	0		
	2	1	2	1	Ib	1	2	1	56	2	49	1	79	
	0	4	0	1	Ic	1	1	1	58	2	46	1	46	
	2	1	2	1	Ic	1	1	1	61	2	86	0	86	
	2	2	4	1	I	1	1	1	74	2	58	0	58	
	2	2	4	1	I	1	2	1	44	1	76	1	76	
42	2	2	4	1	Ic	1	1	1	52	1	loss	0		

MTT-1

OVCAR3	0.196	0.13	0.188	0.196	0.211	0.219	0.213	0.209	0.223	0.215
OVCAR3-L-1	0.222	0.208	0.199	0.206	0.209	0.214	0.21	0.204	0.212	0.22
OVCAR3-L-2	0.206	0.215	0.213	0.208	0.211	0.214	0.212	0.197	0.193	0.211
OVCAR3	0.39	0.385	0.374	0.371	0.373	0.371	0.385	0.395	0.393	0.397
OVCAR3-L-1	0.465	0.416	0.423	0.407	0.426	0.43	0.429	0.427	0.404	0.451
OVCAR3-L-2	0.36	0.405	0.374	0.379	0.377	0.384	0.379	0.389	0.408	0.427
OVCAR3	0.563	0.522	0.507	0.528	0.527	0.522	0.52	0.544	0.525	0.534
OVCAR3-L-1	0.664	0.643	0.655	0.654	0.644	0.637	0.625	0.691	0.635	0.713
OVCAR3-L-2	0.434	0.471	0.449	0.475	0.473	0.483	0.461	0.496	0.51	0.511
OVCAR3	0.714	0.692	0.654	0.712	0.697	0.7	0.7	0.699	0.701	0.7
OVCAR3-L-1	1.144	1.074	0.99	1.033	1.075	1.06	1.076	1.089	1.06	1.001
OVCAR3-L-2	0.671	0.571	0.608	0.649	0.696	0.715	0.675	0.577	0.674	0.658
OVCAR3	0.838	0.818	0.839	0.816	0.819	0.829	0.847	0.809	0.812	0.841
OVCAR3-L-1	1.053	1.059	1.081	1.05	1.092	1.077	1.077	1.072	1.051	1.117
OVCAR3-L-2	0.756	0.77	0.721	0.684	0.725	0.738	0.744	0.753	0.747	0.797
OVCAR3	0.788	0.681	0.713	0.71	0.744	0.772	0.799	0.734	0.73	0.805

A2780	0.148	0.16	0.148	0.161	0.155	0.162	0.153	0.164	0.161	0.167
A2780-L-1	0.153	0.151	0.148	0.163	0.152	0.154	0.15	0.147	0.146	0.148
A2780-L-2	0.153	0.165	0.166	0.159	0.163	0.17	0.162	0.164	0.163	0.168
A2780	0.325	0.313	0.315	0.308	0.31	0.307	0.3	0.281	0.313	0.346
A2780-L-1	0.26	0.217	0.211	0.253	0.237	0.243	0.225	0.236	0.252	0.25
A2780-L-2	0.208	0.227	0.234	0.22	0.213	0.223	0.226	0.22	0.225	0.209
A2780	0.884	0.775	0.716	0.69	0.785	0.722	0.779	0.804	0.798	0.799
A2780-L-1	0.547	0.545	0.468	0.47	0.499	0.539	0.554	0.53	0.517	0.556
A2780-L-2	0.557	0.54	0.455	0.538	0.502	0.524	0.518	0.504	0.544	0.601
A2780	0.908	0.93	0.954	0.931	0.95	0.981	0.936	0.946	0.935	0.955
A2780-L-1	0.645	0.661	0.613	0.582	0.618	0.619	0.634	0.643	0.628	0.677
A2780-L-2	0.673	0.585	0.624	0.6	0.628	0.646	0.668	0.628	0.621	0.675
A2780	1.233	1.234	1.281	1.26	1.274	1.218	1.244	1.261	1.244	1.267
A2780-L-1	0.887	0.912	0.859	0.861	0.842	0.853	0.894	0.891	0.889	0.932
A2780-L-2	0.9	0.804	0.848	0.837	0.828	0.861	0.884	0.845	0.835	0.845

