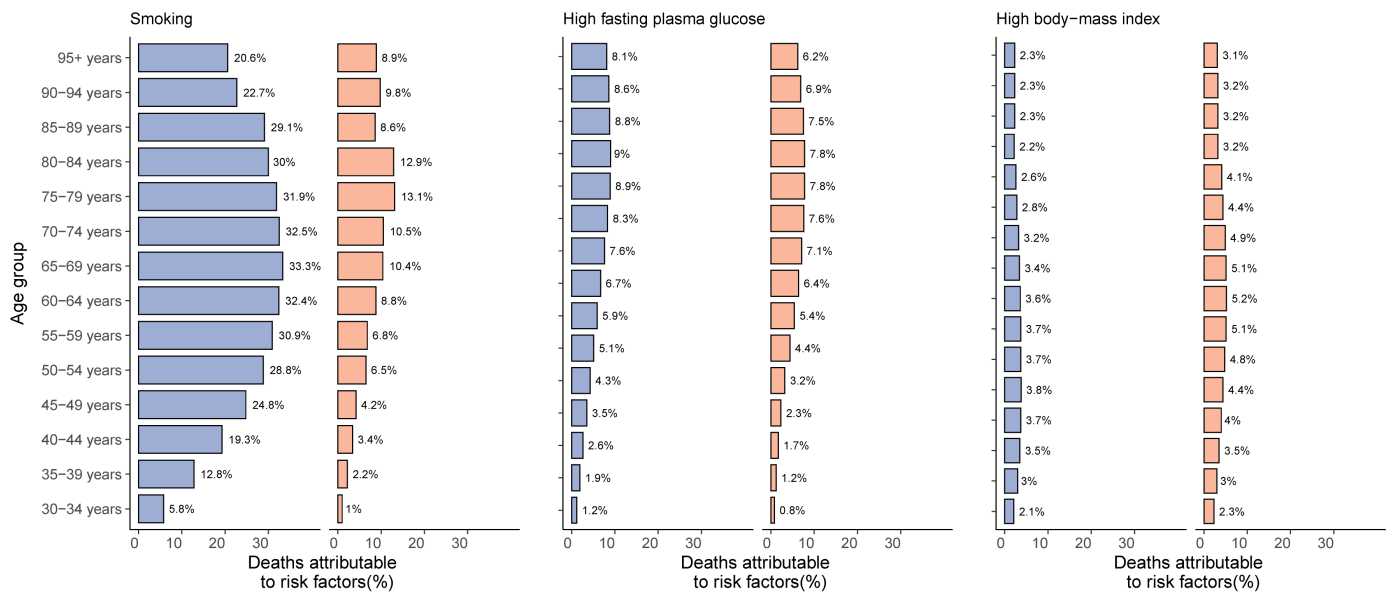
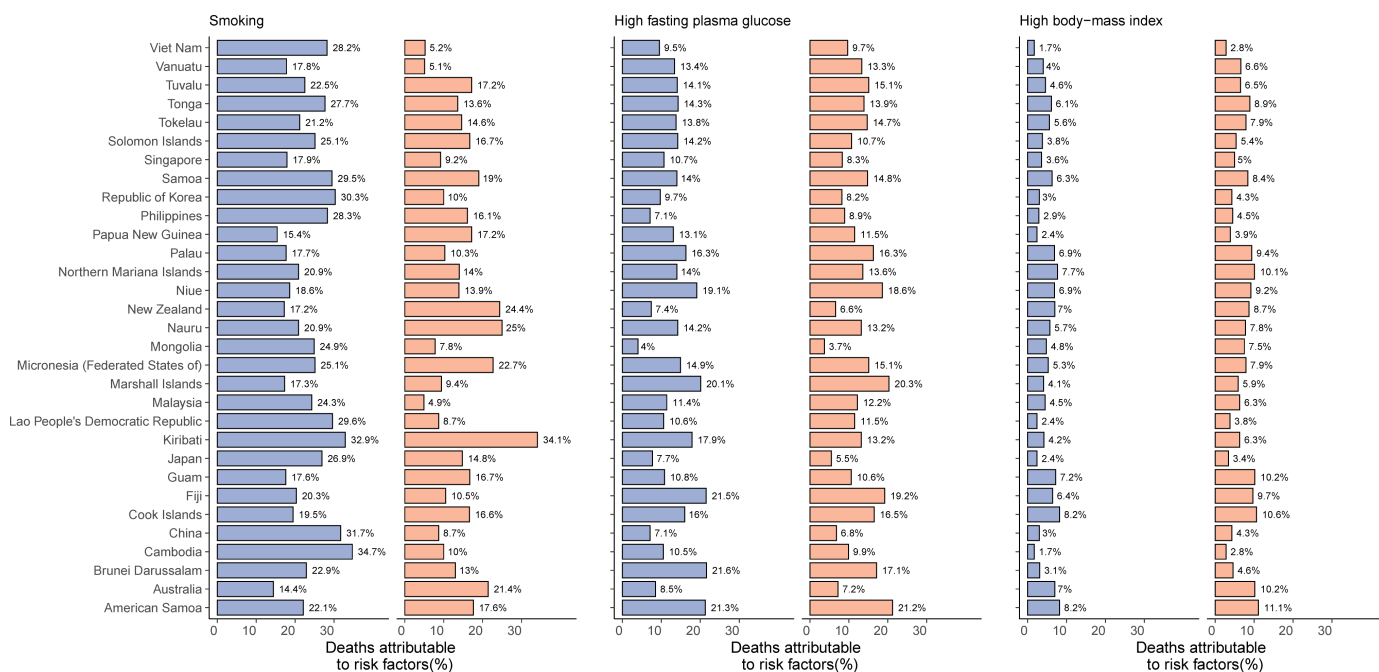


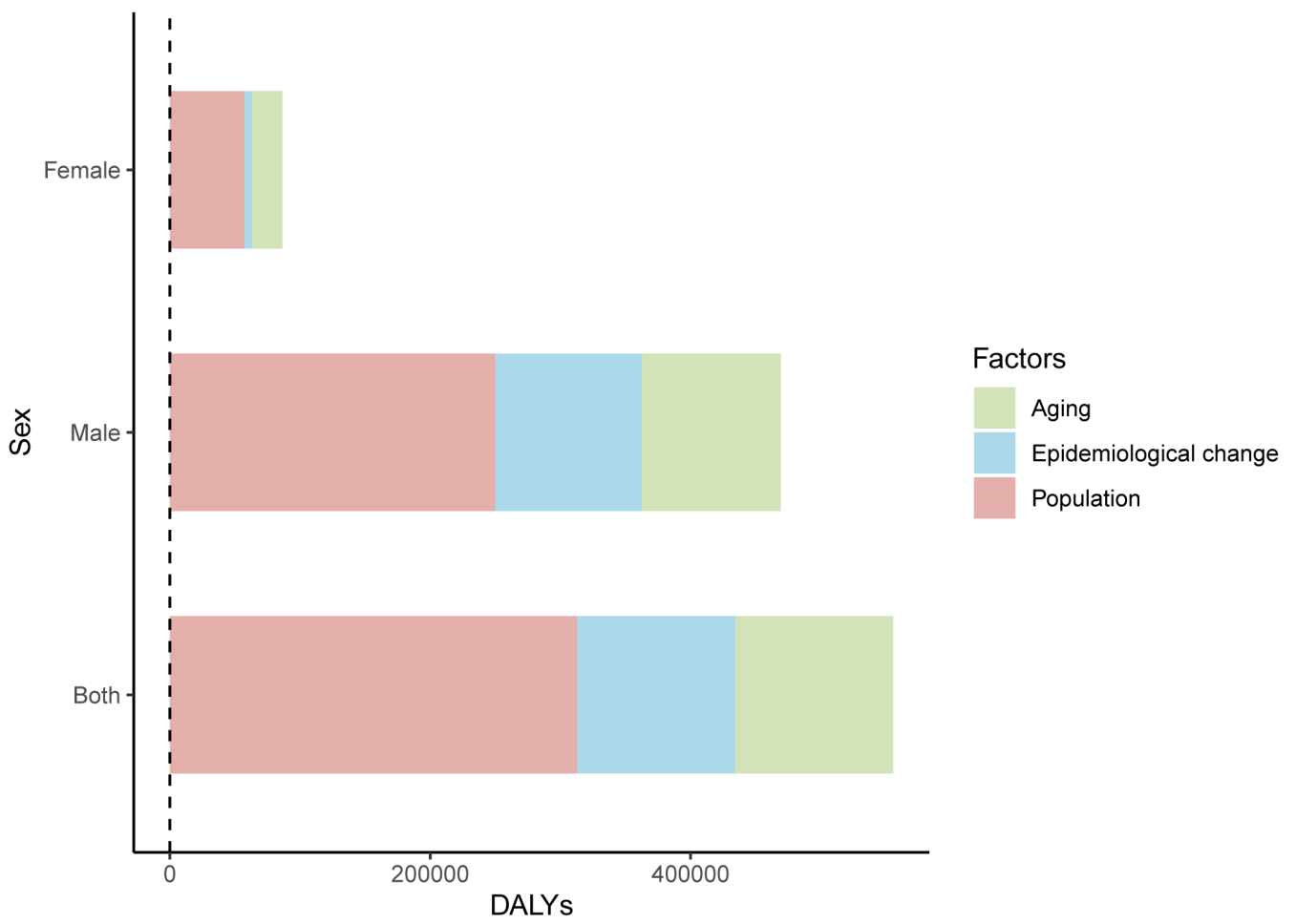
**Figure S1** The fractions of pancreatic cancer age-specific deaths attributable to smoking, high fasting plasma glucose, and high body mass index by age group by sex, 2019



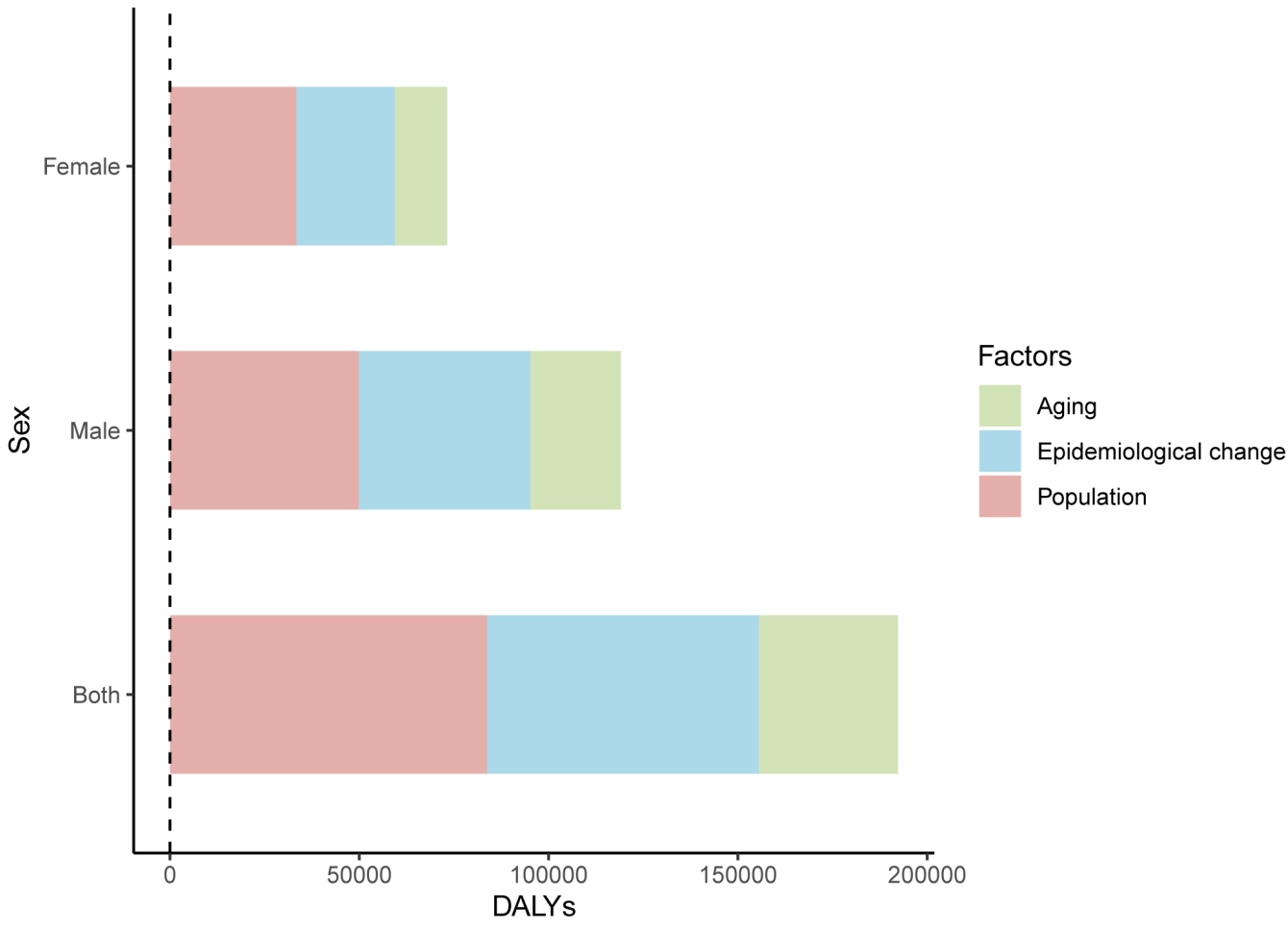
**Figure S2** The fractions of pancreatic cancer age-standardized deaths attributable to smoking, high fasting plasma glucose, and high body mass index among countries/territories by sex, 2019



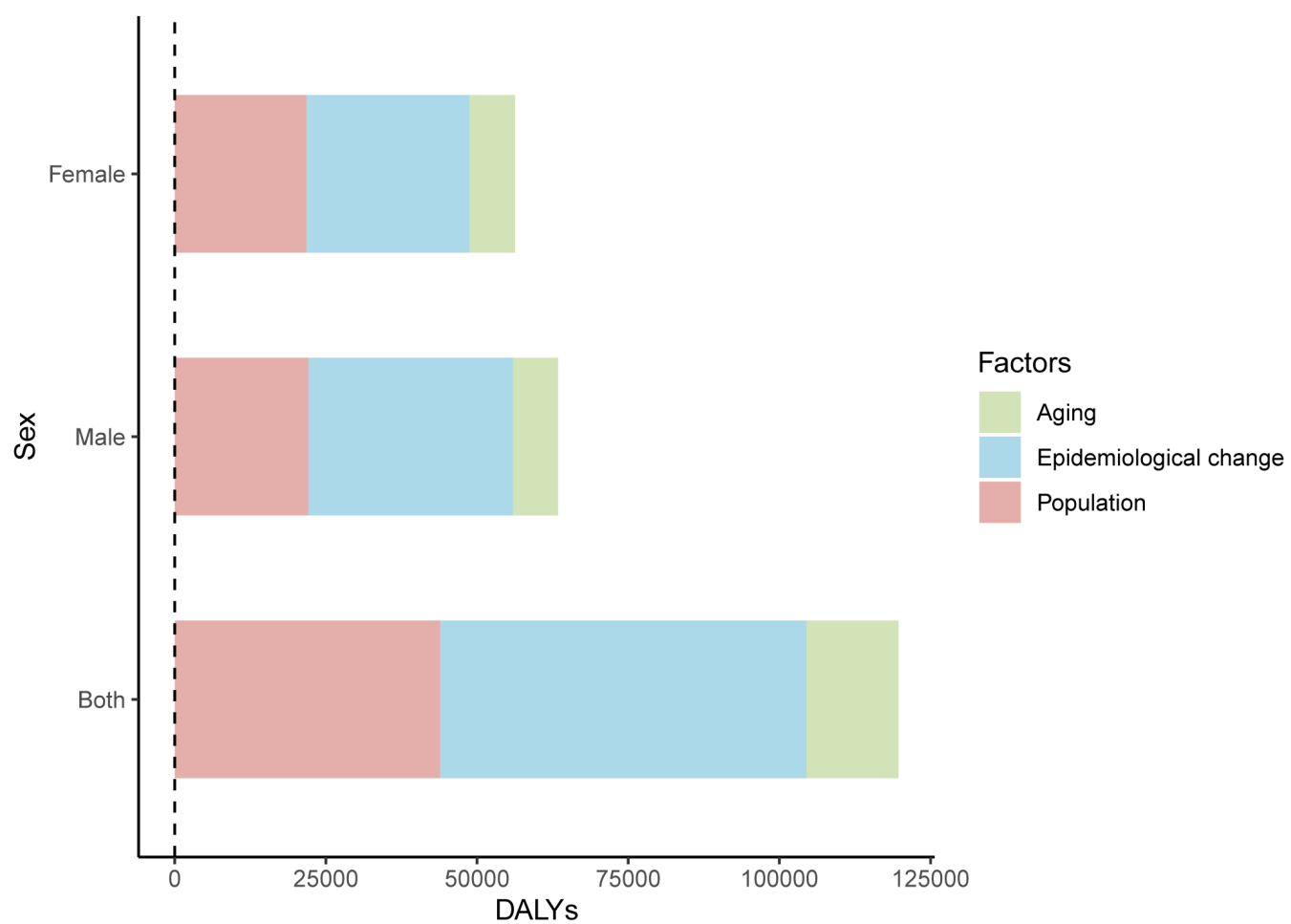
**Figure S3** Decomposition analysis of DALYs attributable to smoking in Western Pacific region, 1990 to 2019



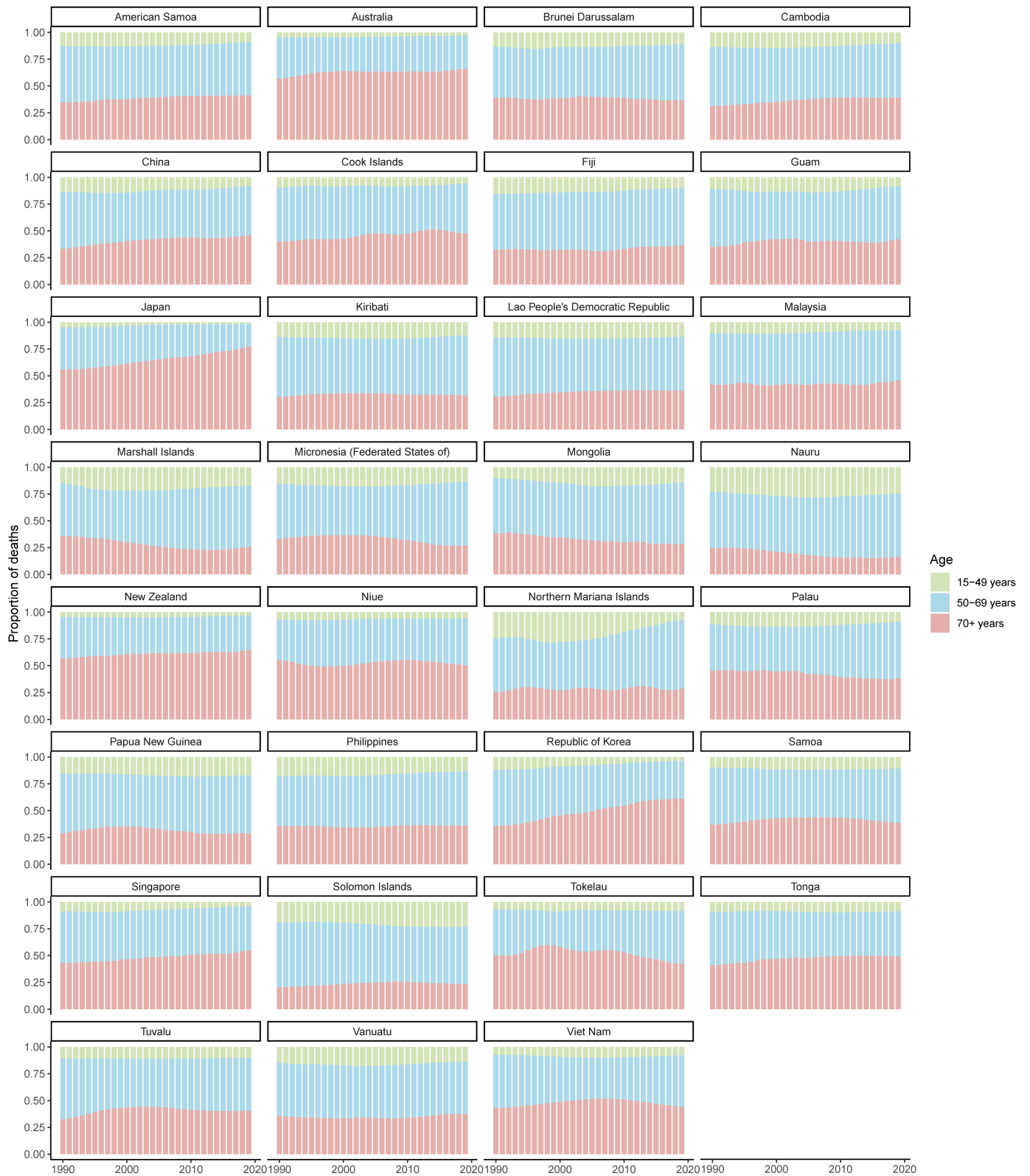
**Figure S4** Decomposition analysis of DALYs attributable to high fasting plasma glucose in Western Pacific region, 1990 to 2019



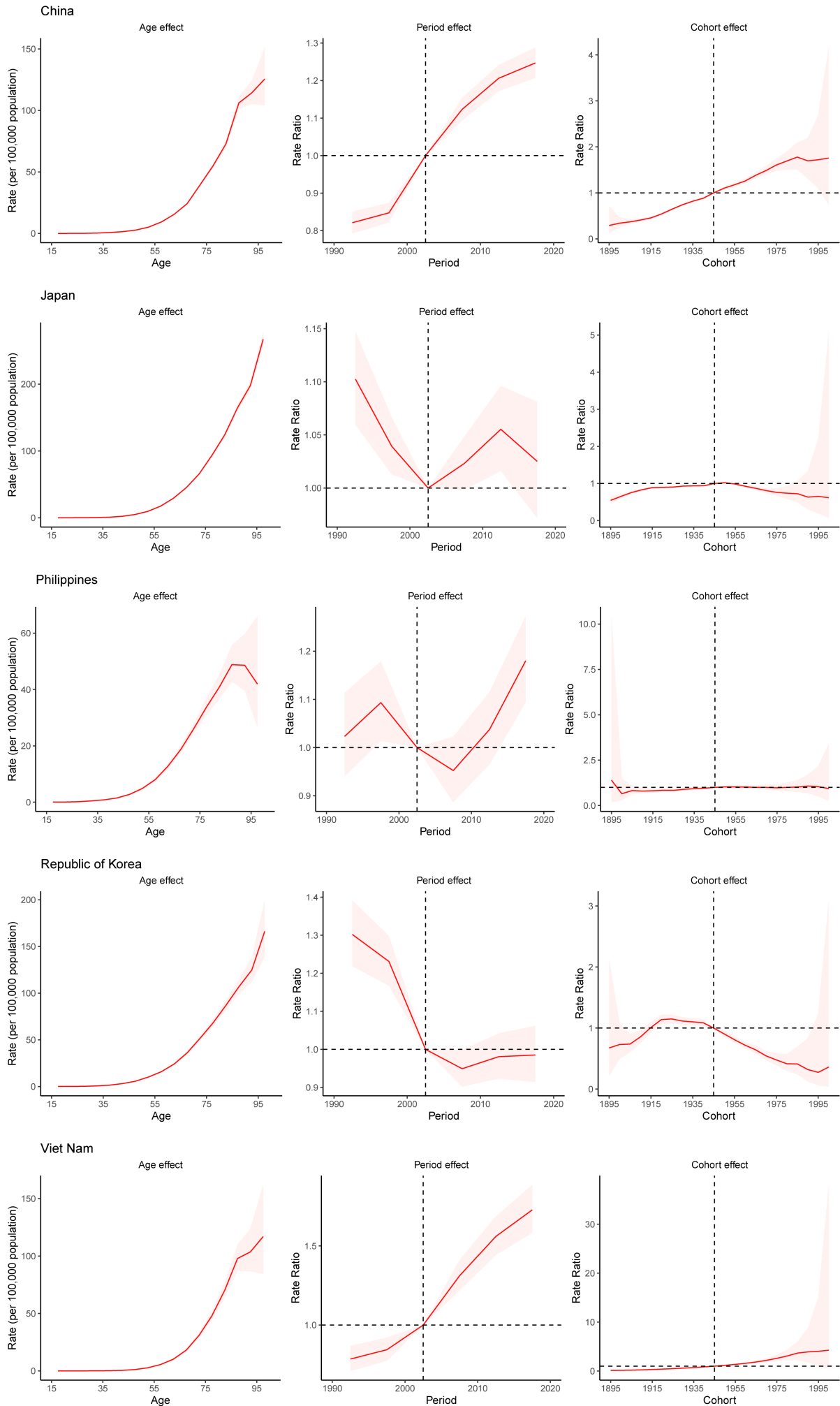
**Figure S5** Decomposition analysis of DALYs attributable to high body mass index in Western Pacific region, 1990 to 2019



**Figure S6** Temporal change in the relative proportion of pancreatic cancer deaths across age groups (15 to 49 year, 50 to 69 years, 70+ years) in Western Pacific countries/territories, 1990 to 2019.



**Figure S7** Age, period and cohort effects on pancreatic cancer mortality



**Figure S8** Predicting pancreatic cancer deaths to 2044 in ten Western Pacific countries

