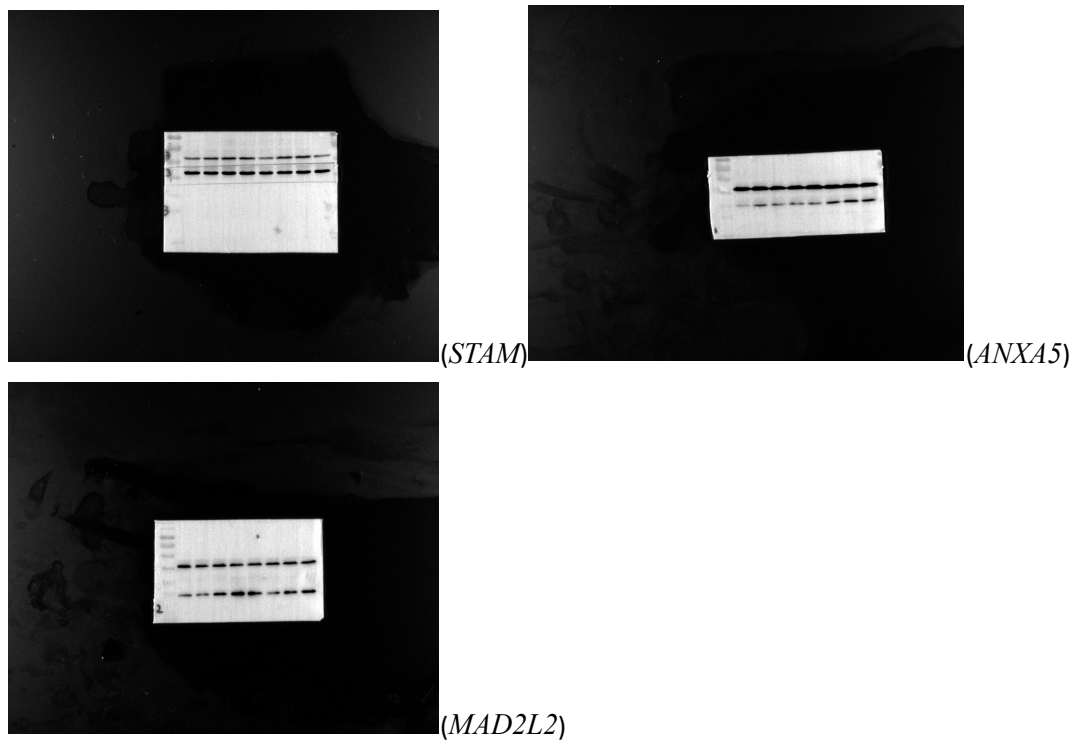


Figure 8. Expression of *STAM*, *ANXA5* and *MAD2L2* in HCC cell lines.(A) The expressions of *STAM*, *ANXA5* and *MAD2L2* in normal hepatocytes and hepatoma cell lines were detected using Western blotting. Knocking down *STAM*, *ANXA5* and *MAD2L2* inhibited the proliferation and migration of HCC cells.



(B) The knockdown efficiency of *STAM*, *ANXA5* and *MAD2L2* was detected using Western Blotting.

