

* SHU308 cell line.

* TAGLN2 siRNA 33nM. 72hr. transfection.

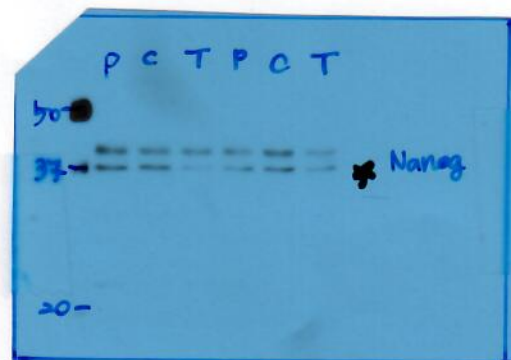
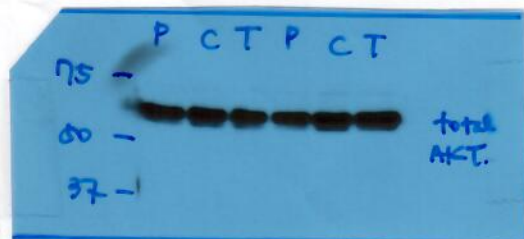
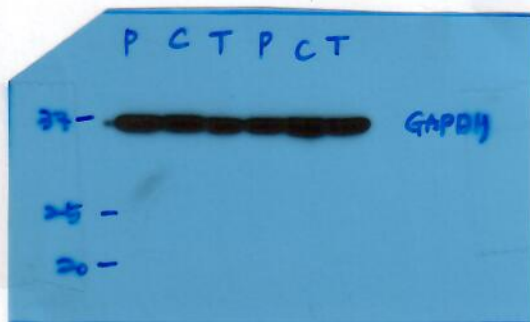
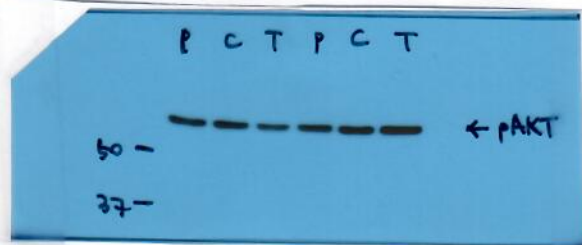
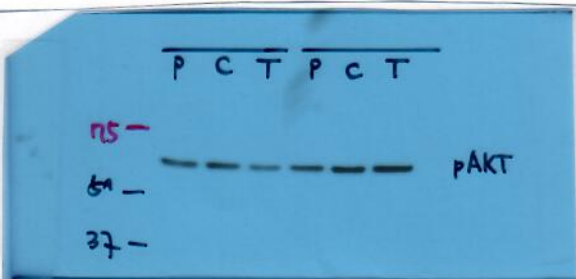
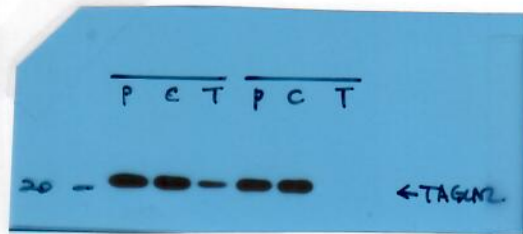
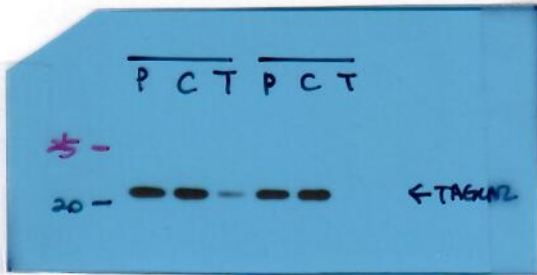
* protein 20µg loading

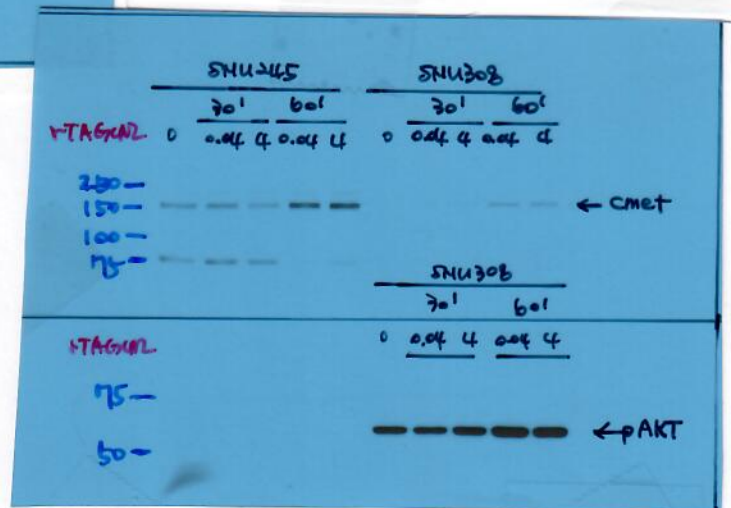
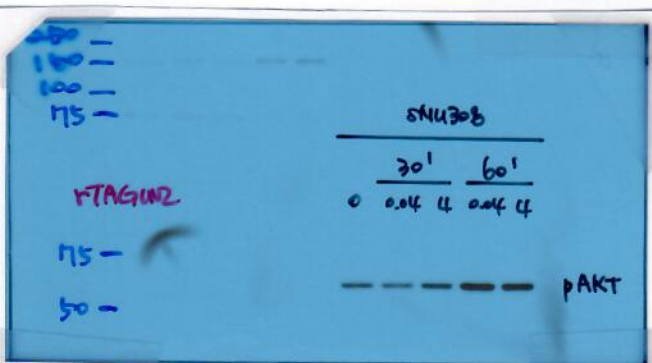
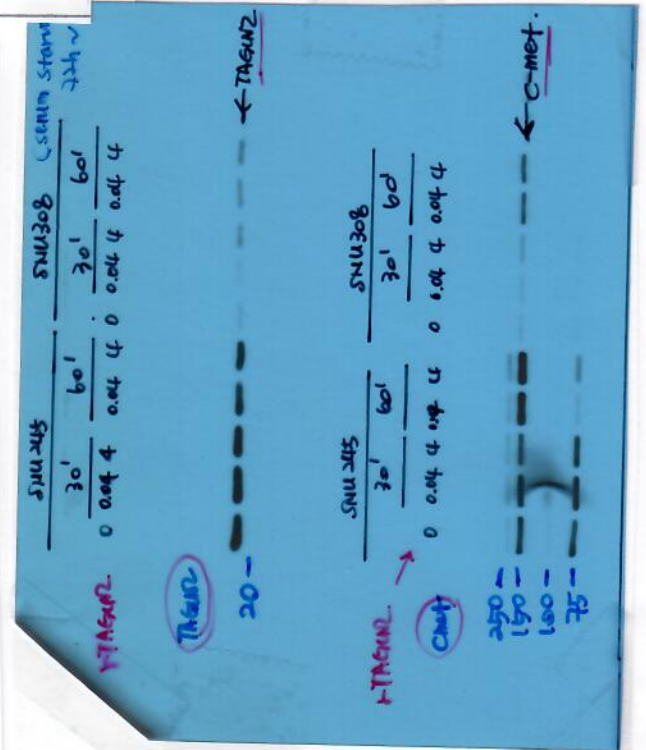
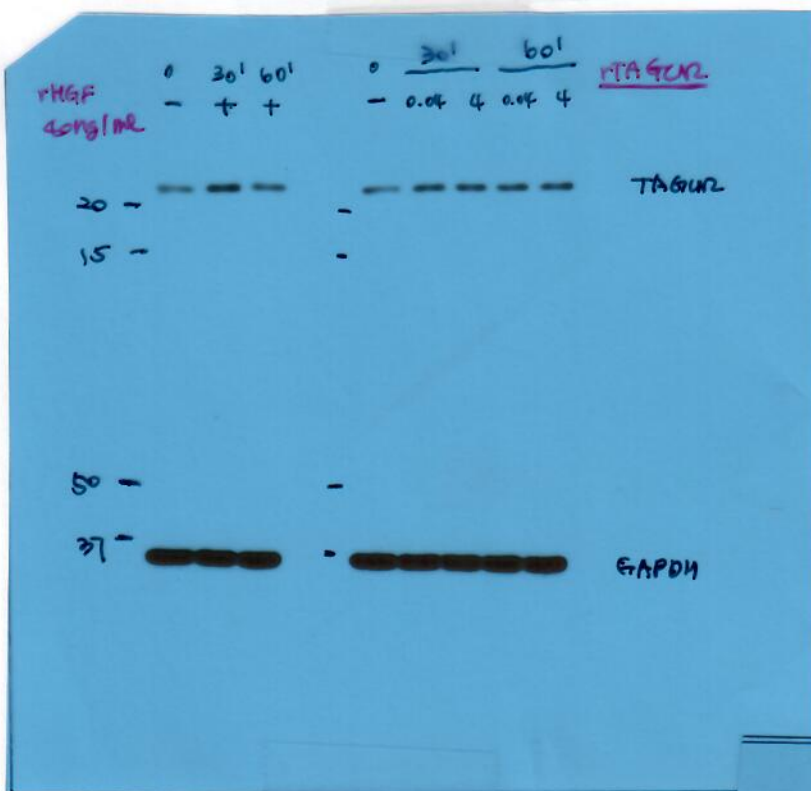
(2hr. 4°C)

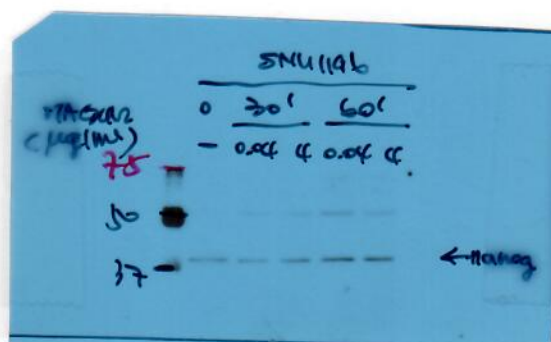
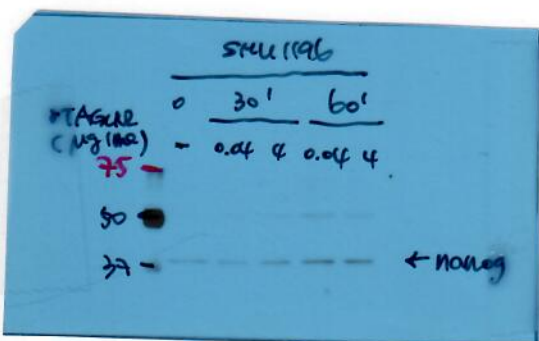
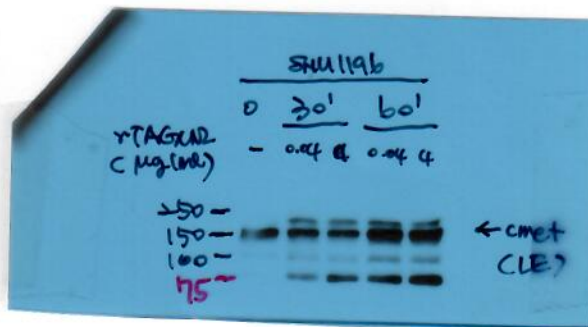
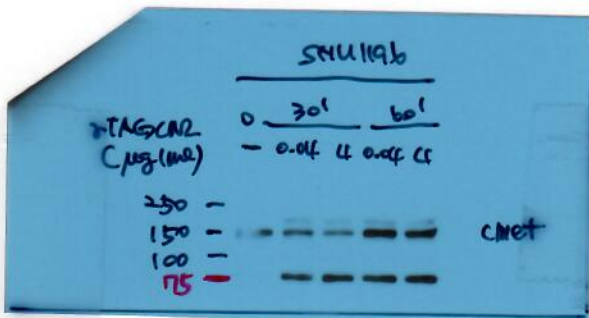
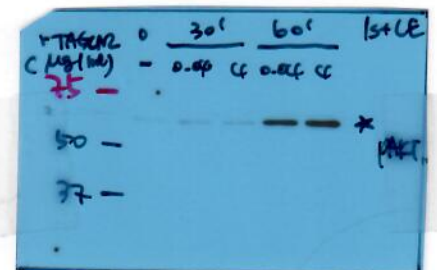
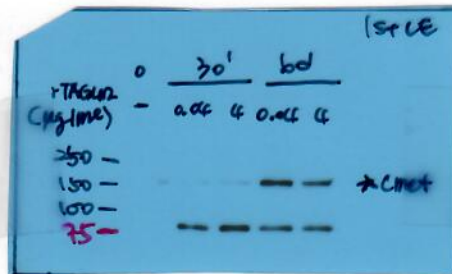
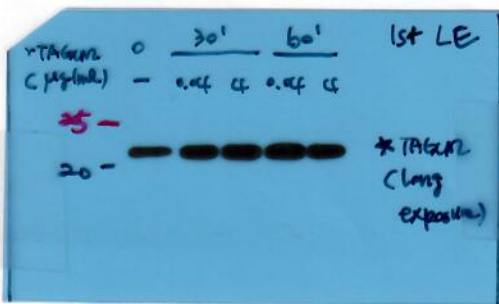
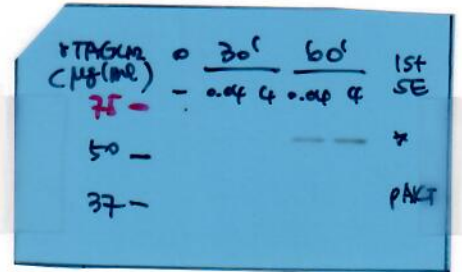
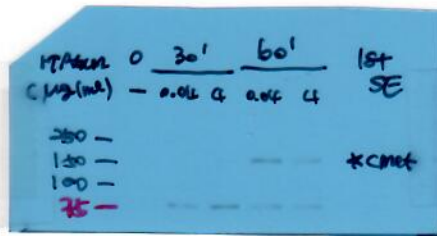
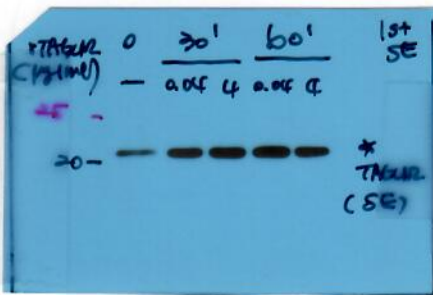
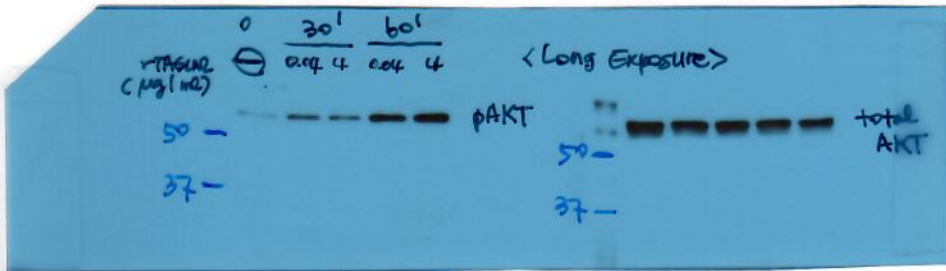
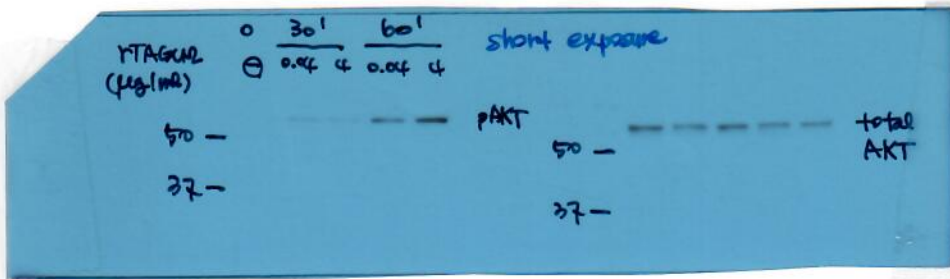
P: parental SHU308

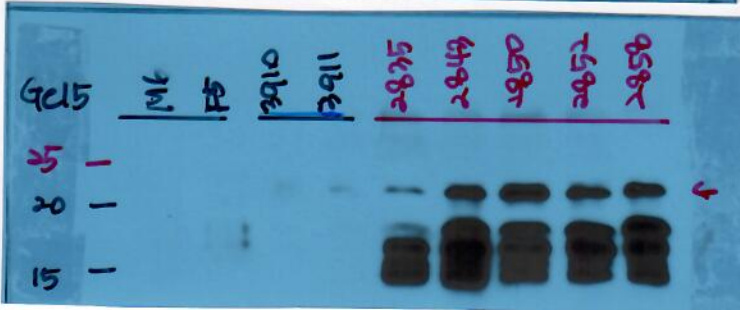
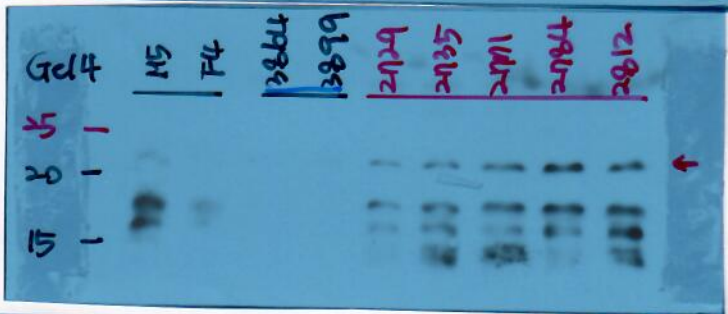
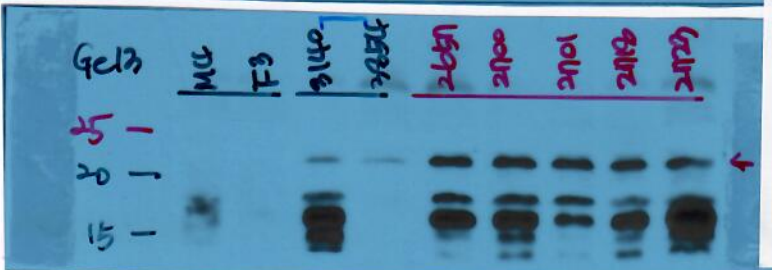
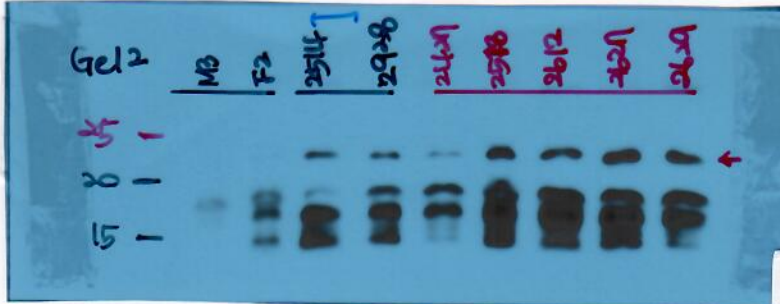
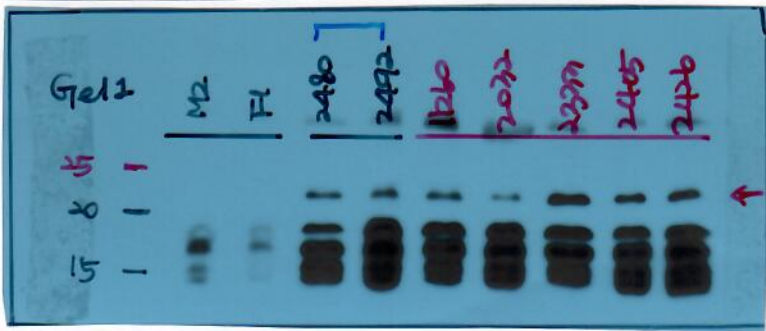
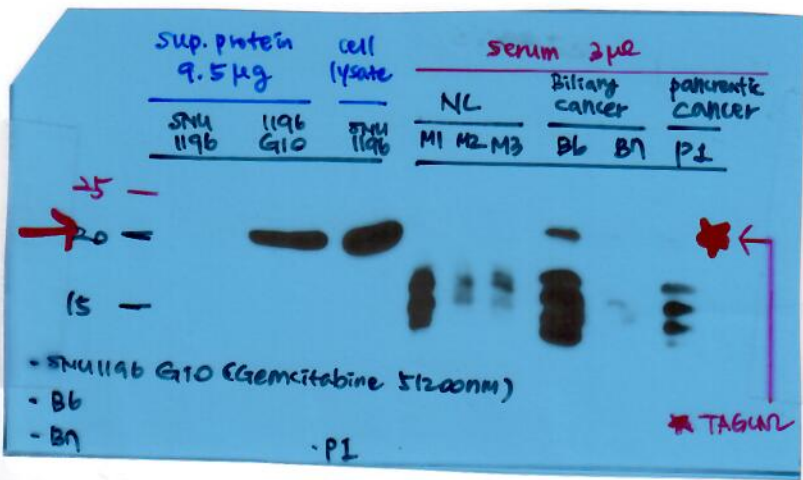
C: control siRNA

T: TAGLN2 siRNA





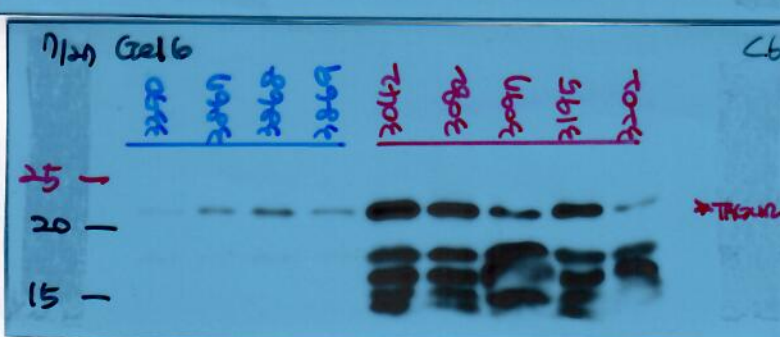
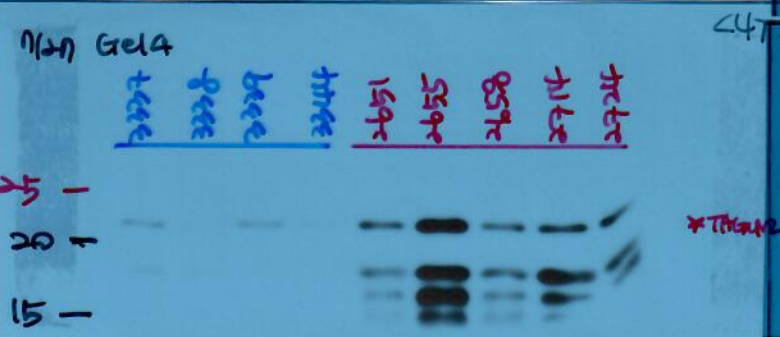
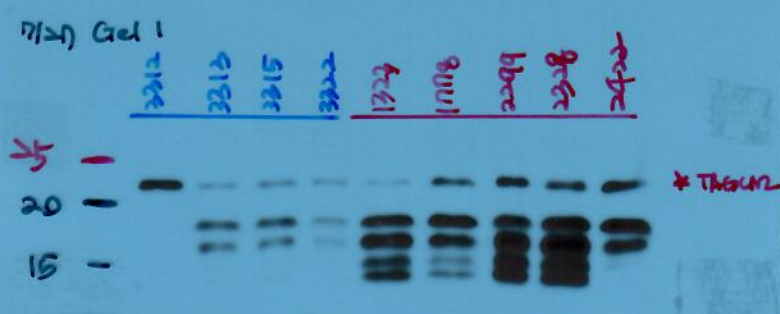




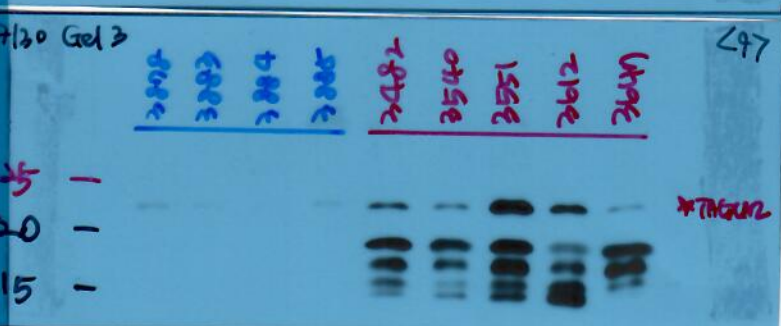
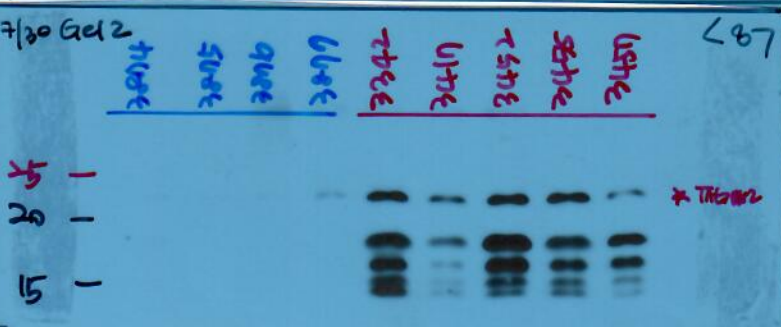
20150203 develop. 1min 30sec Exposure.

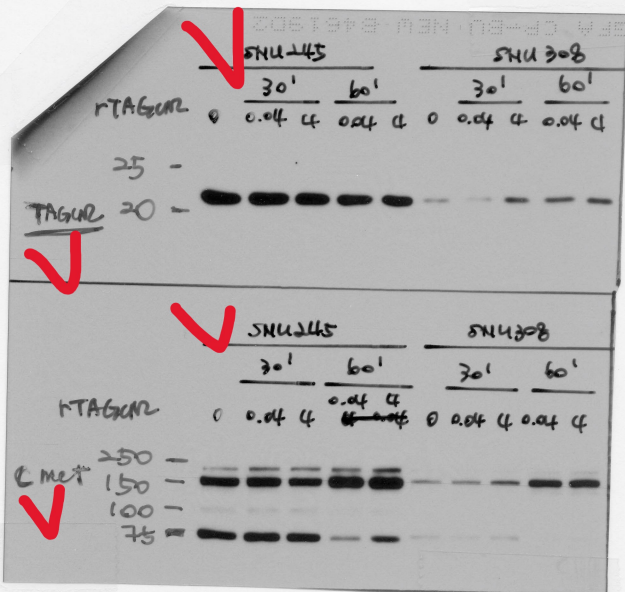
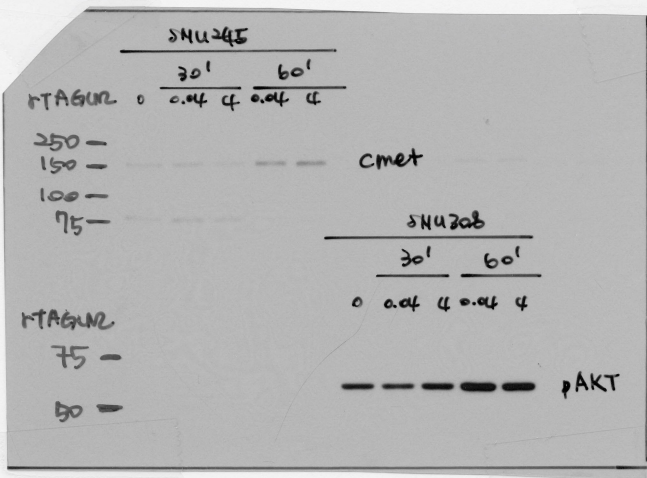
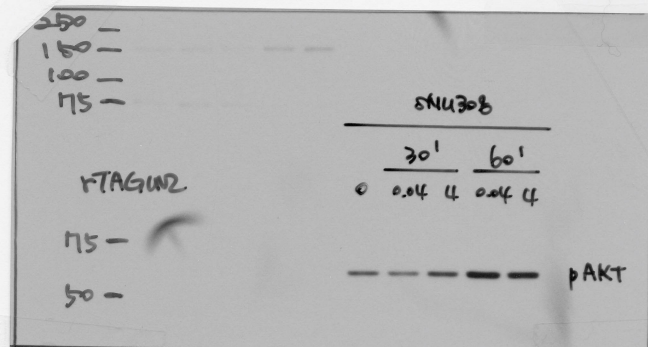
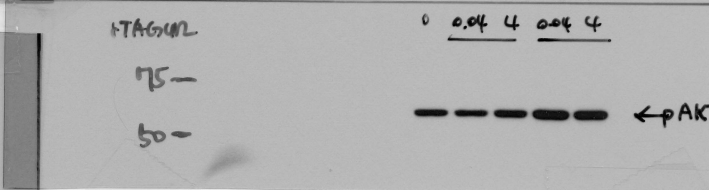
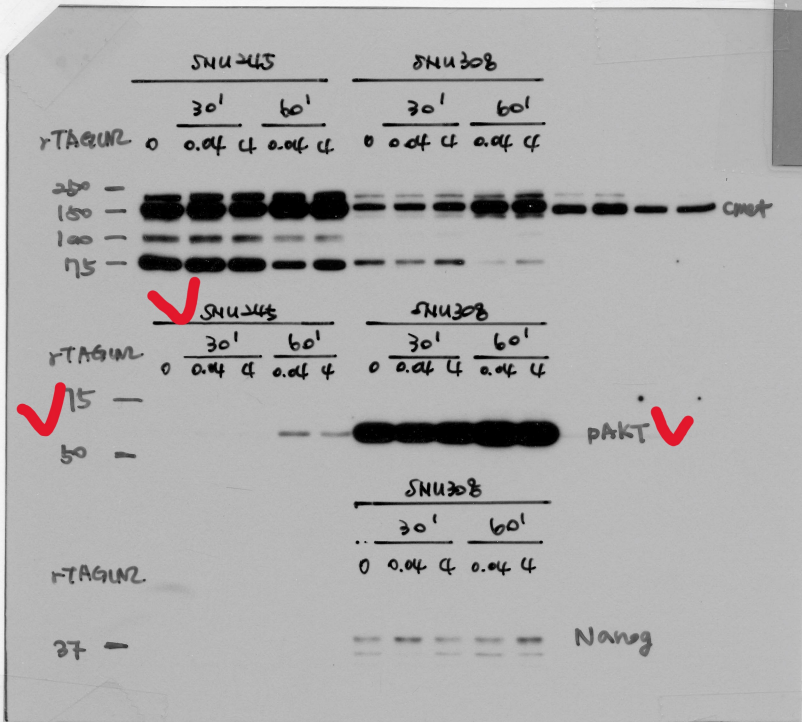
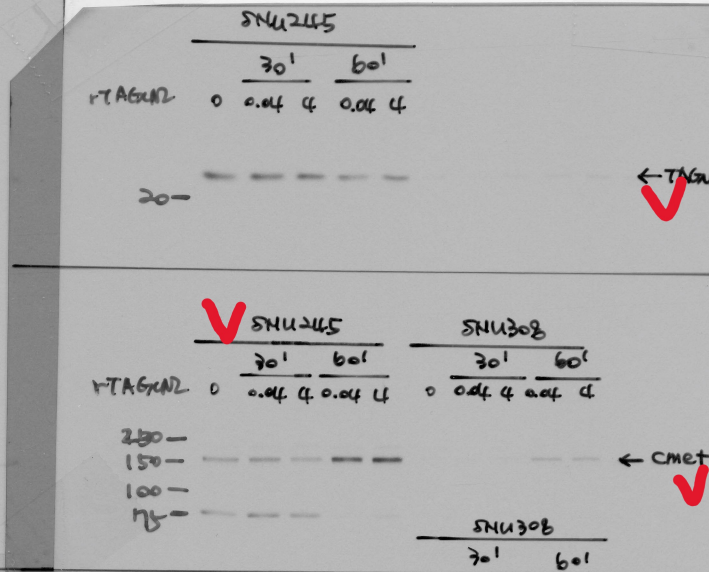
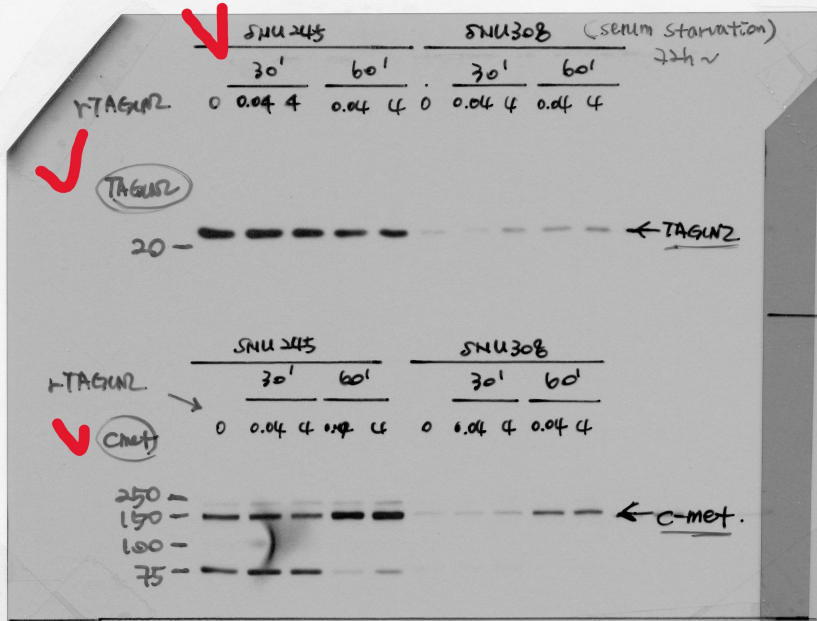
정량화하기 위한 TAGM2 검사. (Serum)

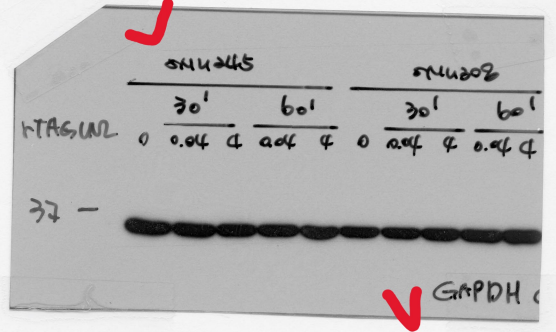
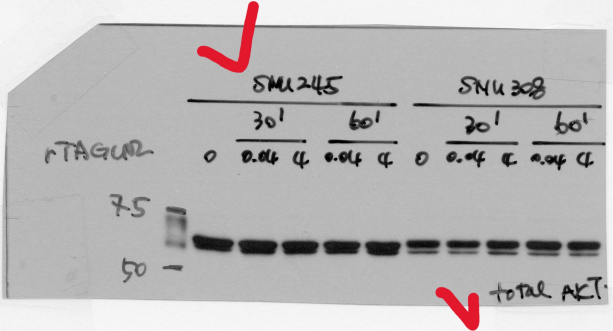
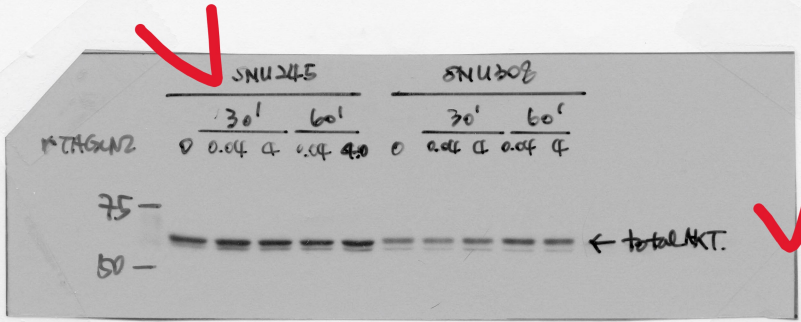
- ① 정상 Normal 41 개이스 (Normal)
- ② 암환자 48 개이스 (cancer)
- ✓ serum 3μl loading
- ✓ 12% SDS-PAGE
- ✓ 5% BSA blocking - 3hrs. RT.
- ✓ Santacruz mouse TAGM2 Ab. - 4°C. O/N.
- ✓ Blue : Normal
- ✓ Red : cancer



2019. 8. 27 develop. 1min. 30sec Exposure



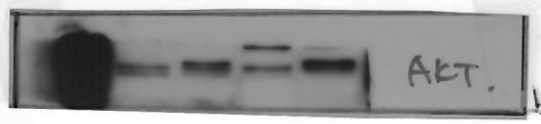
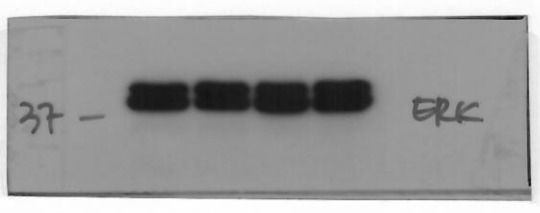
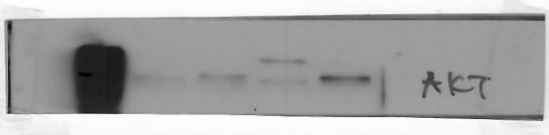
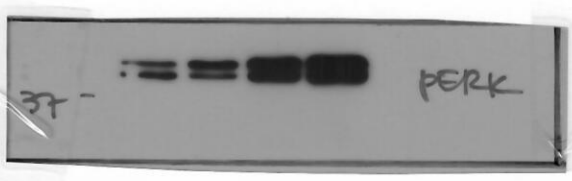
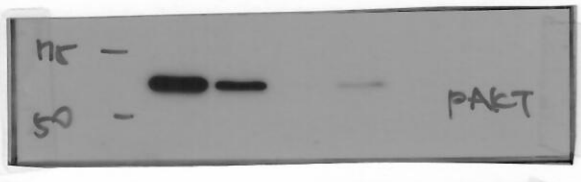
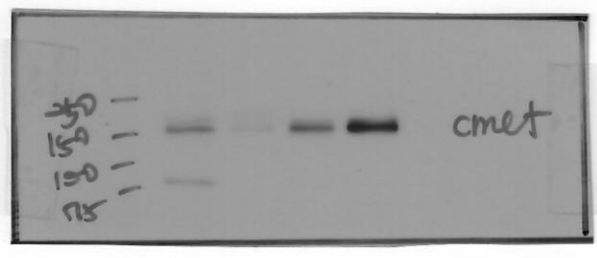
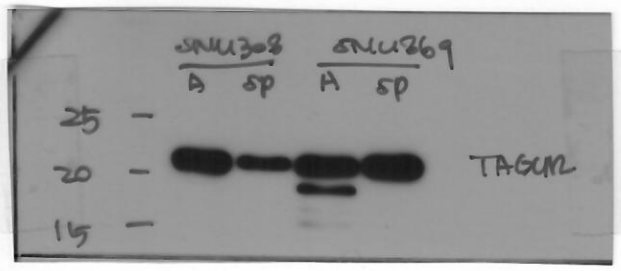
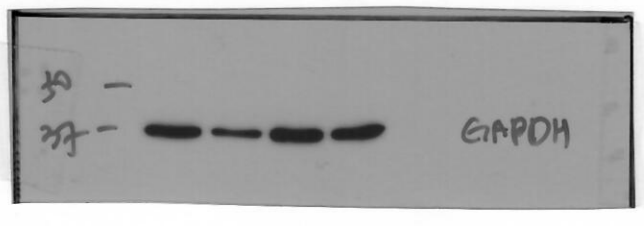
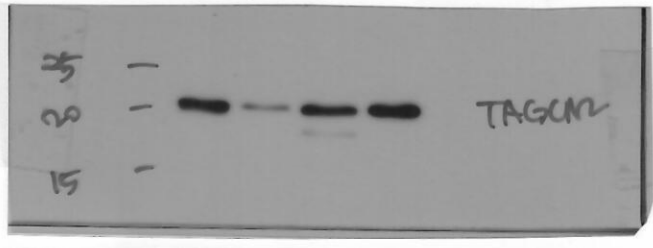
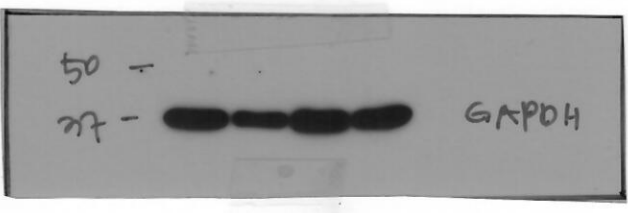
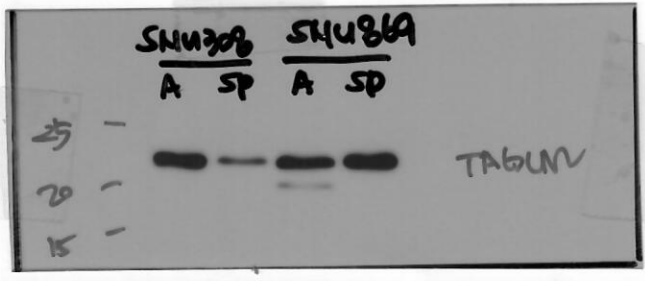




2023-11-22

SNU308, SNU869. - Adherent vs Sphere

1st revision



2024-01-17

SNU308 - SNU869 - Adherent vs sphere.

