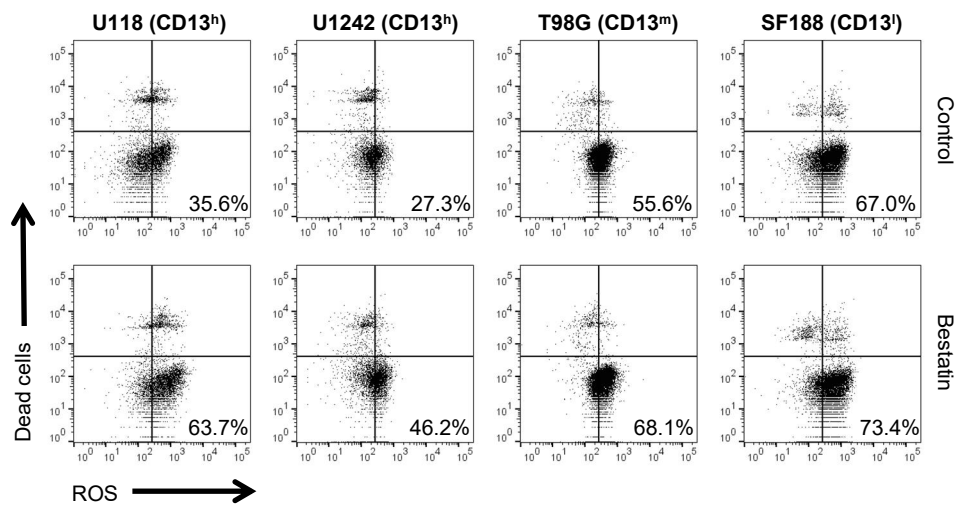


**Supplementary Figure 1. Representative western blotting.** Example of western blots detecting BAX, BCL-2, NOXA, Pro and Cleaved CAS 3 after 48h of bestatin treatment. GAPDH was used as loading control (-, without drug; +, 500 µg/mL bestatin). Full-length blots are presented in Additional file 7.



**Supplementary Figure 2. Representative dot plot of ROS detection.** Following bestatin treatment (500  $\mu\text{g}/\text{mL}$ ), cells were trypsinized, and cells were incubated with CellROX<sup>®</sup> Detection Reagent. Representative images of dot plots are shown. Percentages indicate ROS production of living cells. CD13<sup>h</sup>, high CD13 expression; CD13<sup>m</sup>, medium CD13 expression; CD13<sup>l</sup>, low CD13 expression.