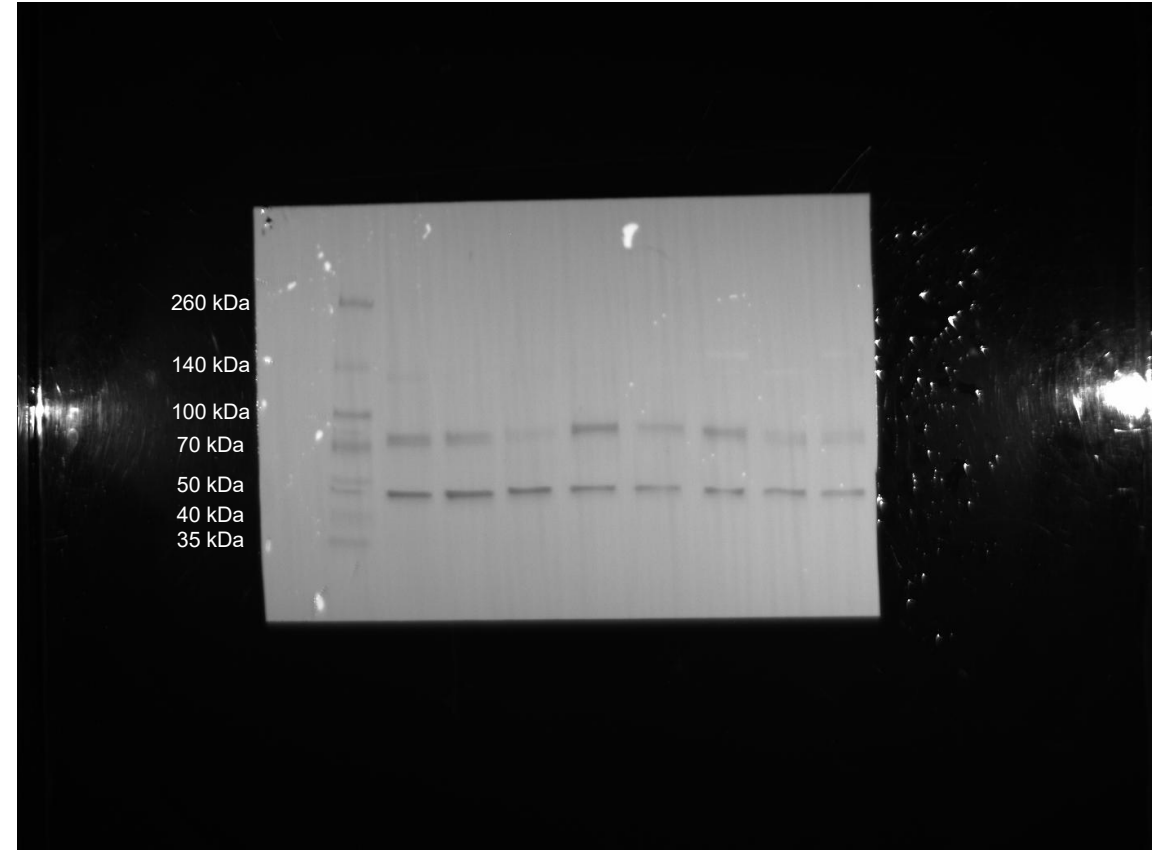
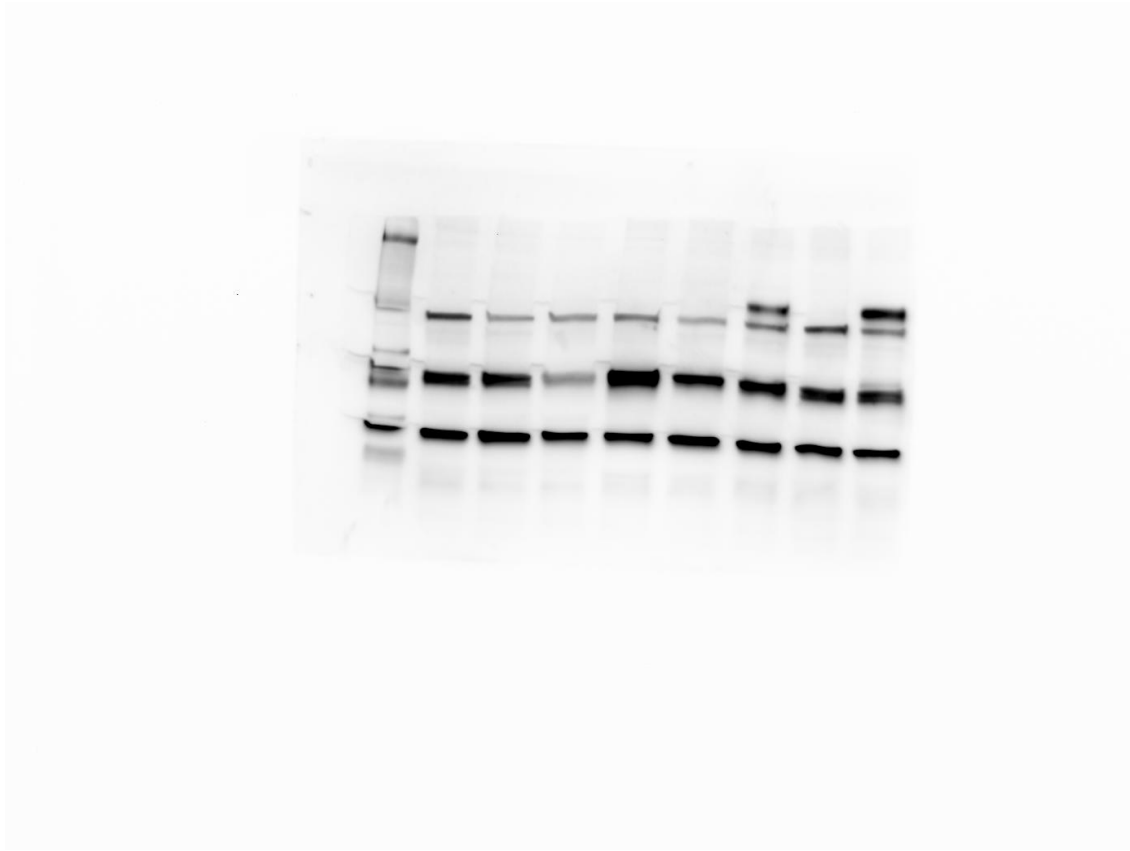
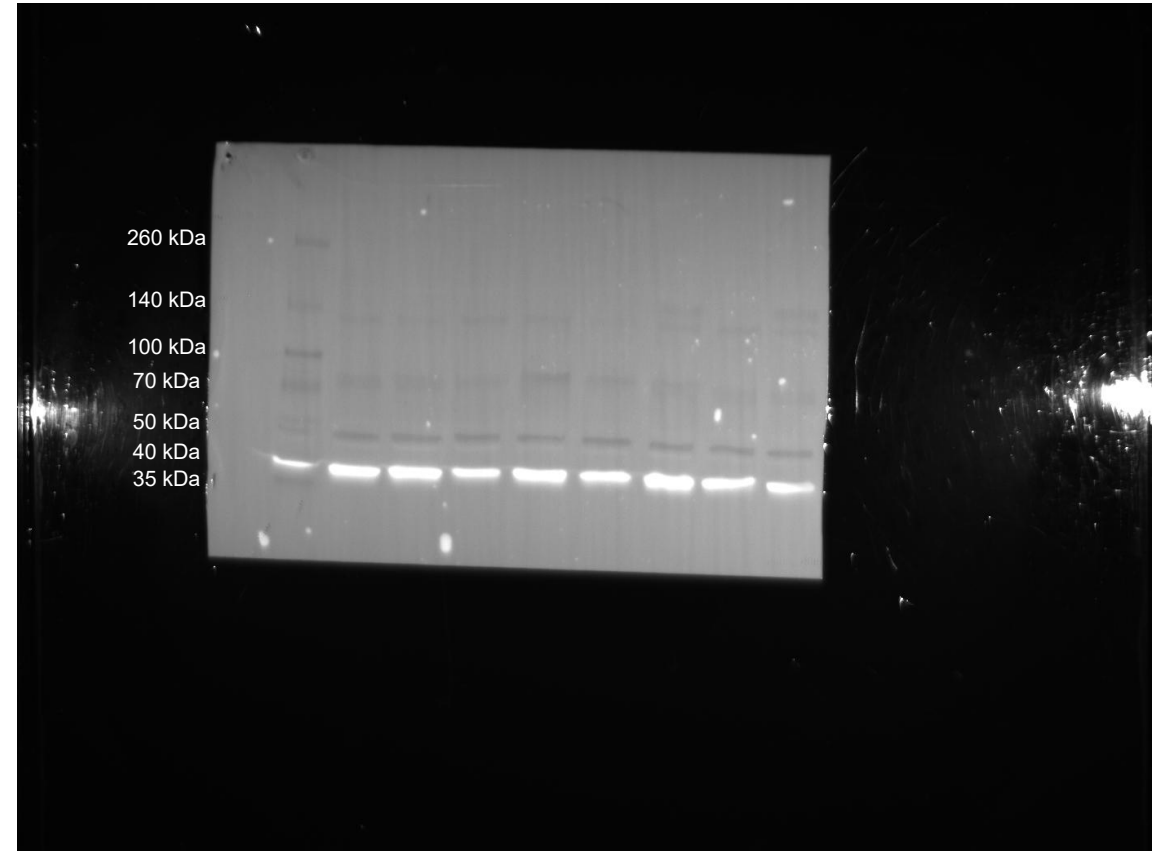


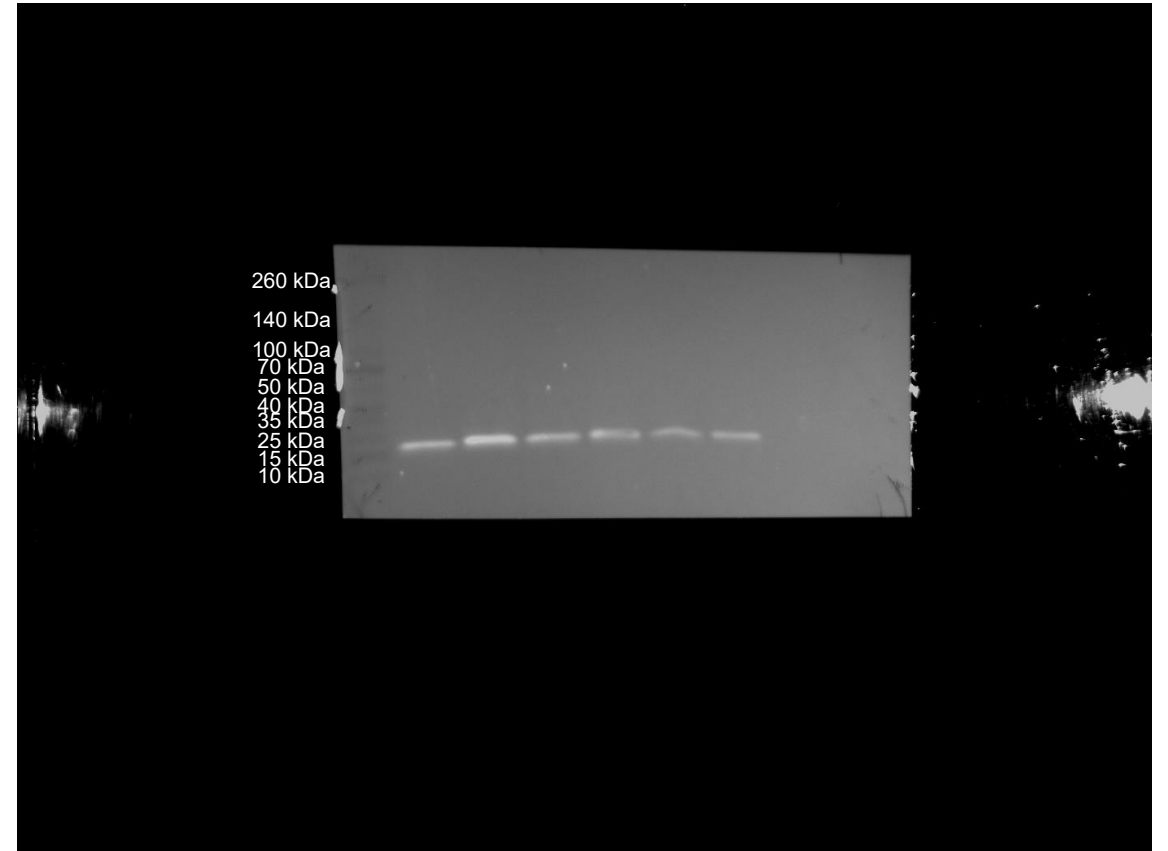
# CD13 (160 kDa and 130 kDa)—Figure 4A



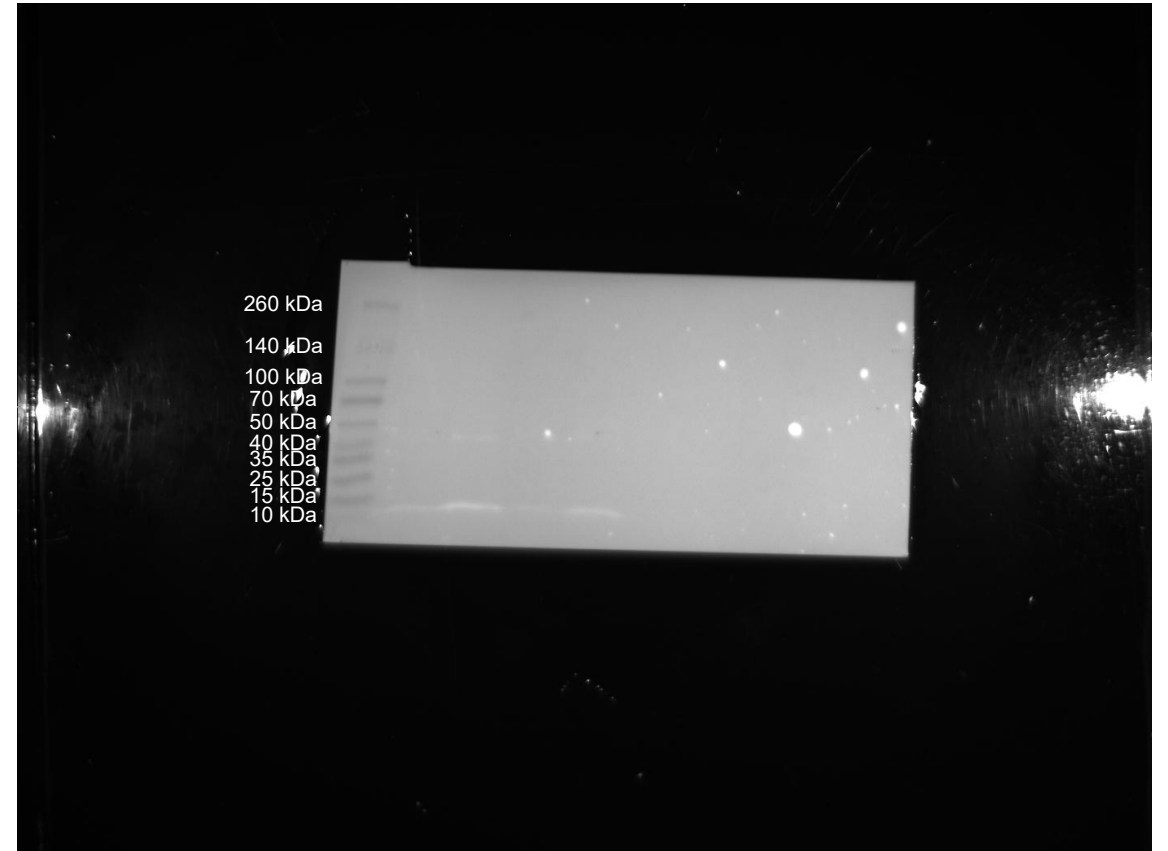
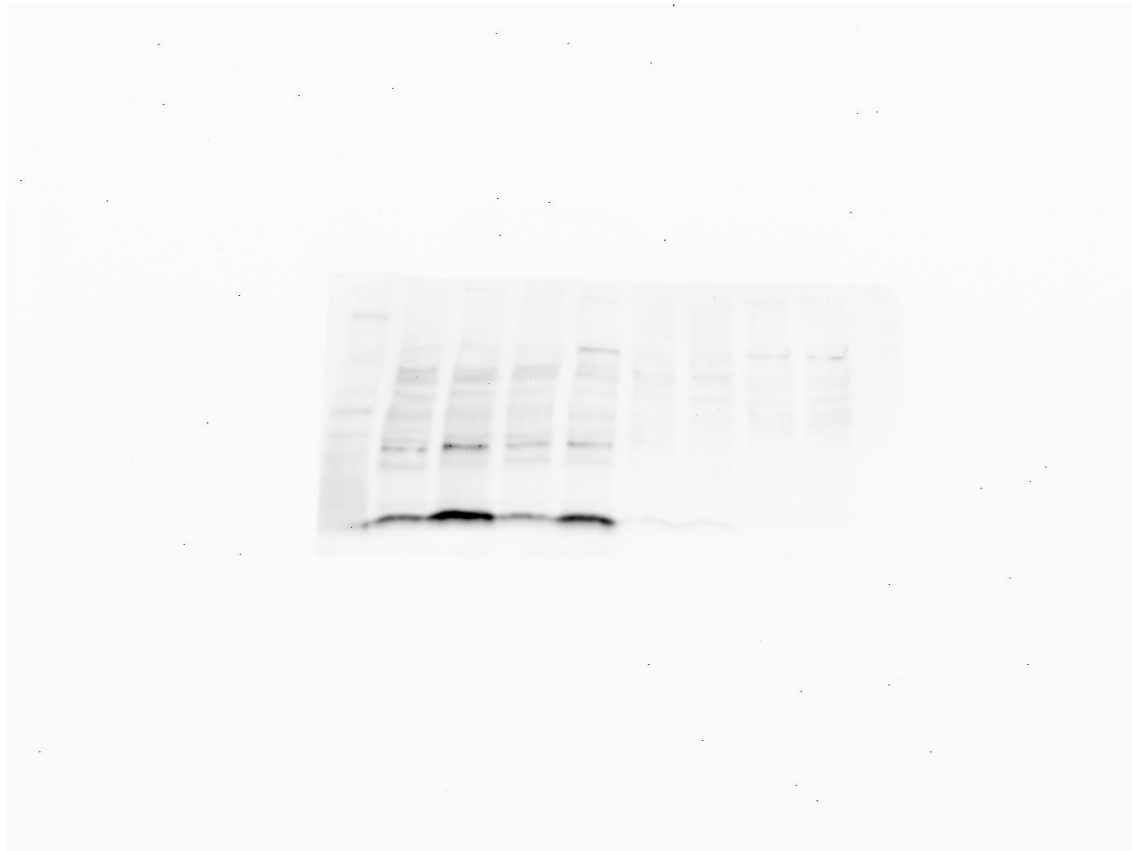
# GAPDH (37 kDa)—Figure 4A



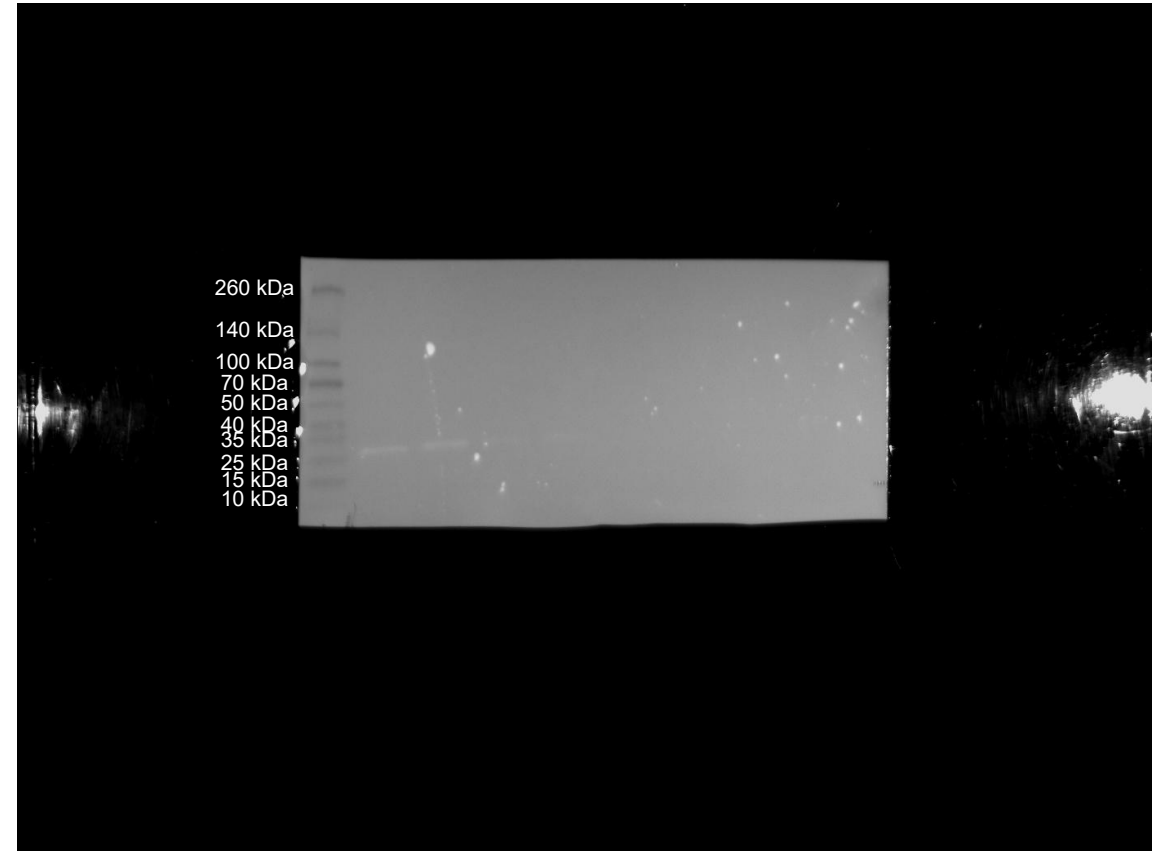
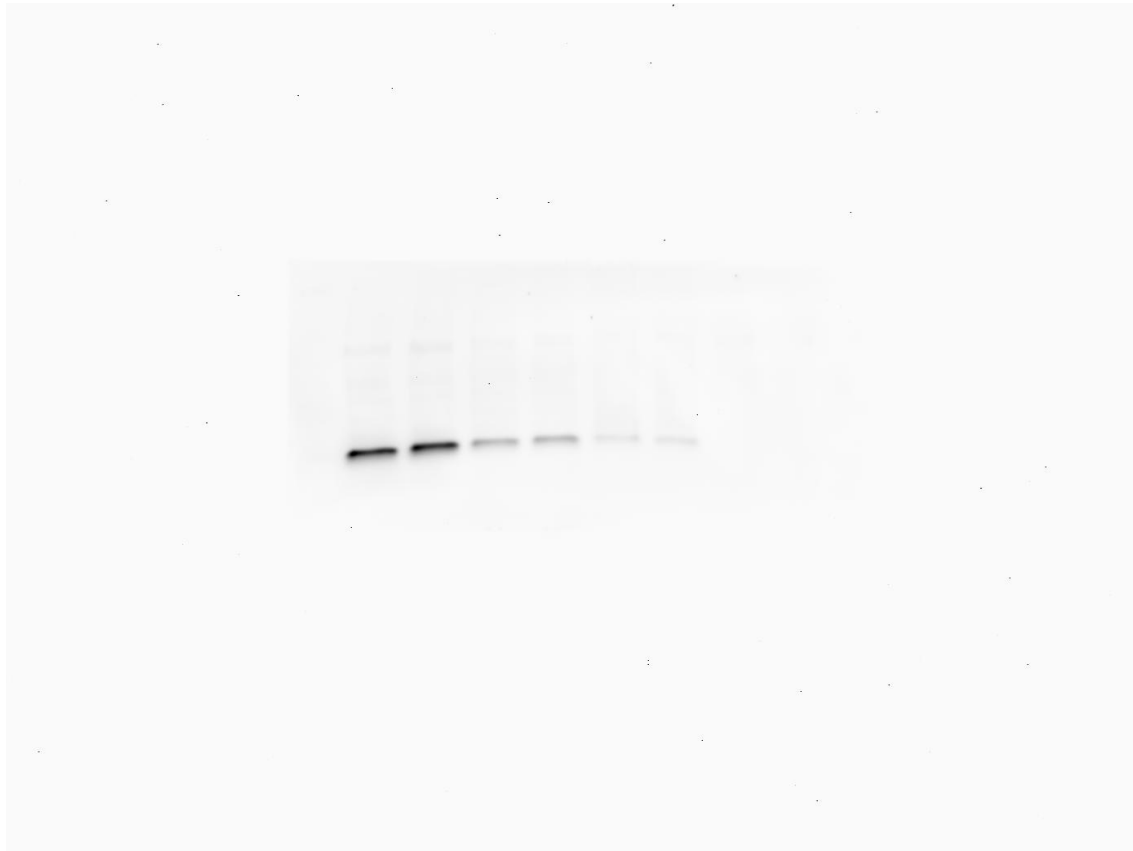
# BAX (20 kDa)—Supplementary Figure S1



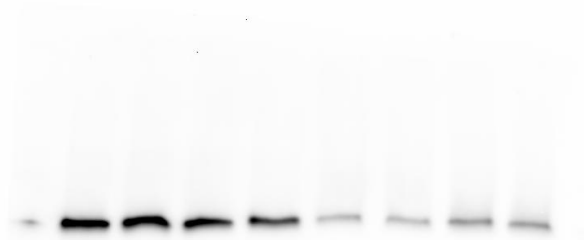
# NOXA (11 kDa)—Supplementary Figure S1



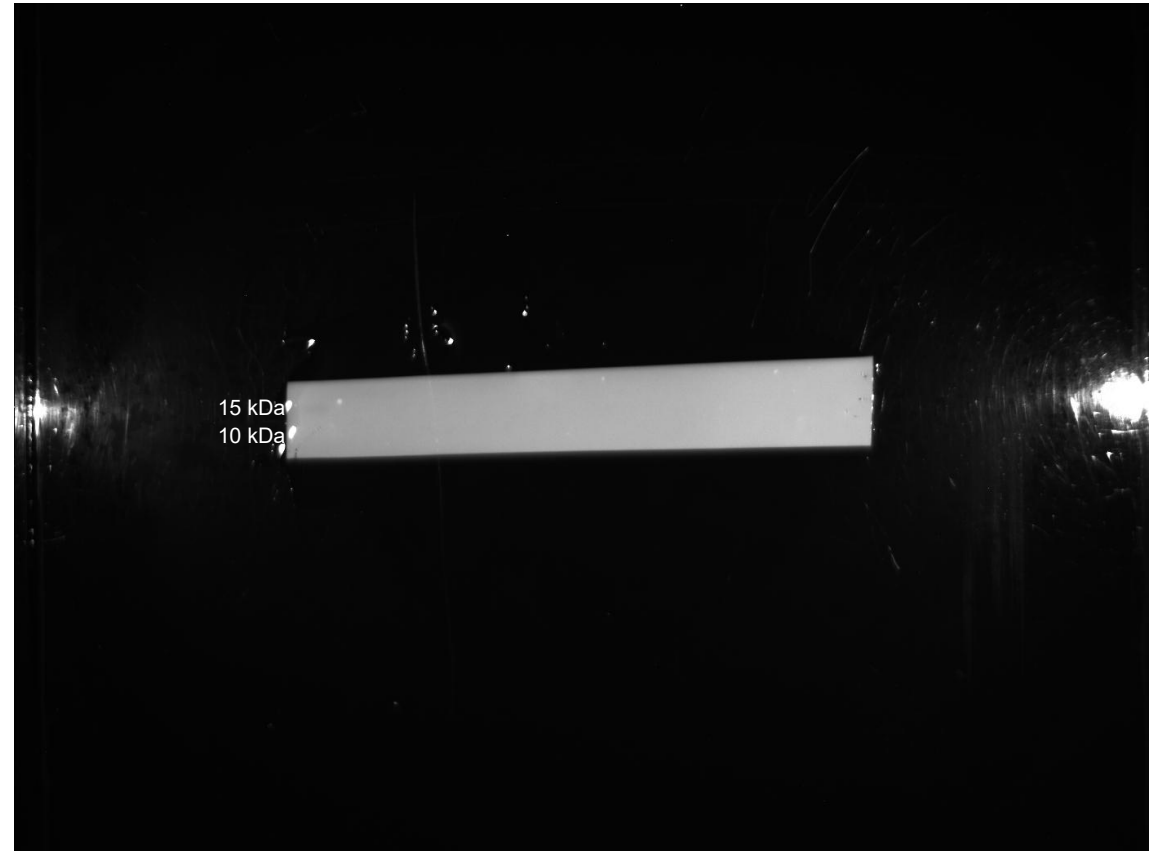
# BCL 2 (26 kDa)—Supplementary Figure S1



# Pro CAS-3 (35 kDa)—Supplementary Figure S1



# Cleaved CAS-3 (19 kDa and 17 kDa)—Supplementary Figure S1



# GAPDH (37 kDa)—Supplementary Figure S1

