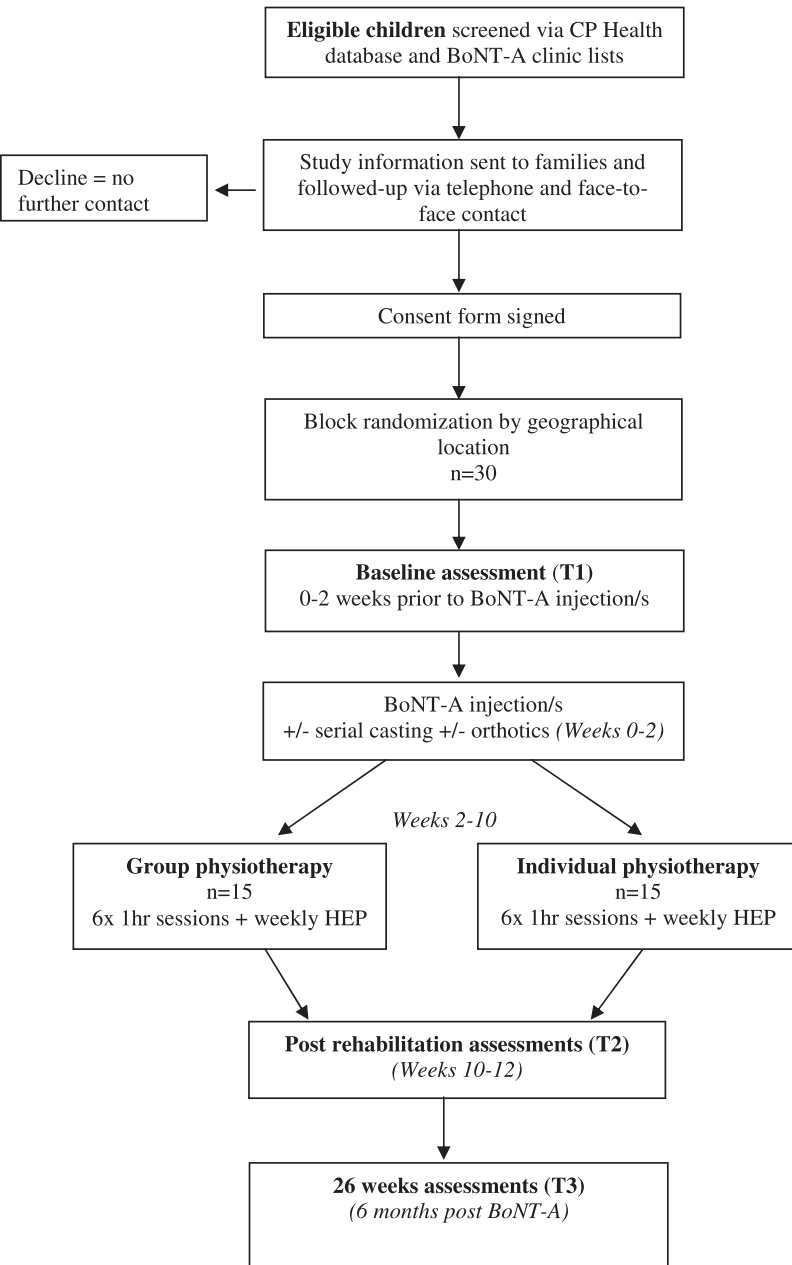


Experimental design



Outcome measures for each assessment time-point

Baseline outcome measures (T1)

Body structure and function:

- EVGS
- PRT

Activity/participation:

- COPM
- 1 MFWT
- GMFm-88 D&E

Contextual:

- CPQOL- Child (caregiver proxy version)

Post BoNT-A outcome measures (T2)

Body structure and function:

- EVGS
- PRT

Activity/participation:

- COPM
- 1 MFWT
- GMFm-88 D&E

Contextual:

- CPQOL- Child (caregiver proxy version)
- Qualitative parent and child questionnaires
- Study coordinator (RT) to collect records from all treating PTs: session evaluation records x6; adverse events form; physiotherapist questionnaire.

26 weeks outcome measures (T3)

Body structure and function:

- EVGS
- PRT

Activity/participation:

- COPM
- 1 MFWT
- GMFm-88 D&E

Contextual:

- CPQOL- Child (caregiver proxy version)
- Qualitative 6 month activity questionnaire (parent report)