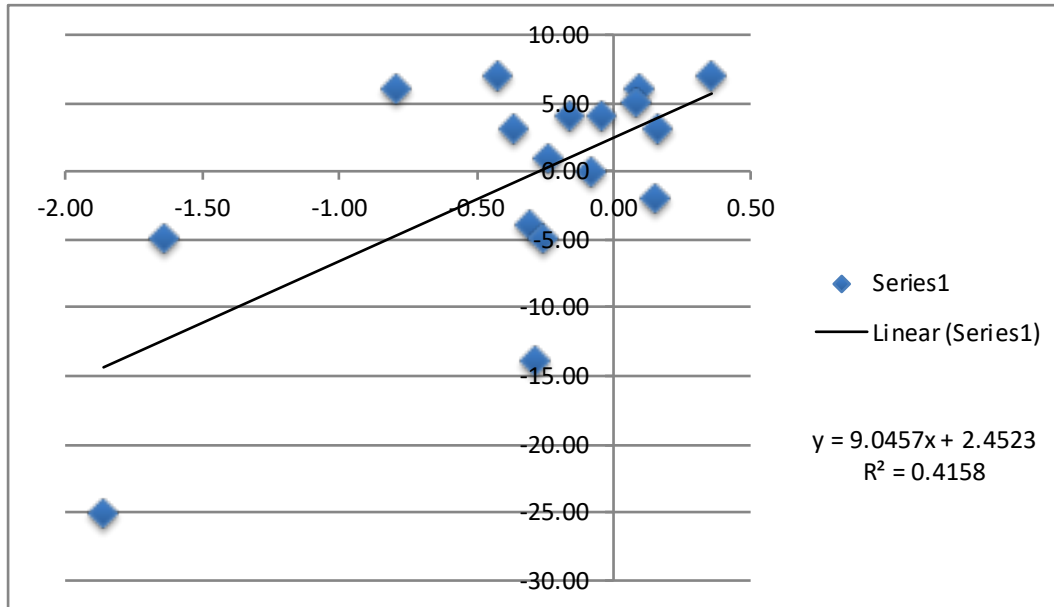


Correlation between delta BMI-SDS T0-T2 (x axis) & delta TICS T0-T2 (y axis)



$r = 0.64$

$r^2 = 0.42$

$n = 16$

$t_c = 0.23$

$t = 3.27, p = 0.005$

Spearman's rho = 0.38, $p = 0.13$

Abbreviations

delta BMI-SDS T0-T2 BMI-SDS at T2 (12 months) minus BMI-SDS at T0 (start)

delta TICS T0-T2 TICS score at T2 (12 months) minus TICS score at T0 (start)

r correlation coefficient

n number of observations

t_c t-test for the significance of correlation coefficient,
 $t = r / \text{SQRT}((1 - r^2) / (n - 2))$

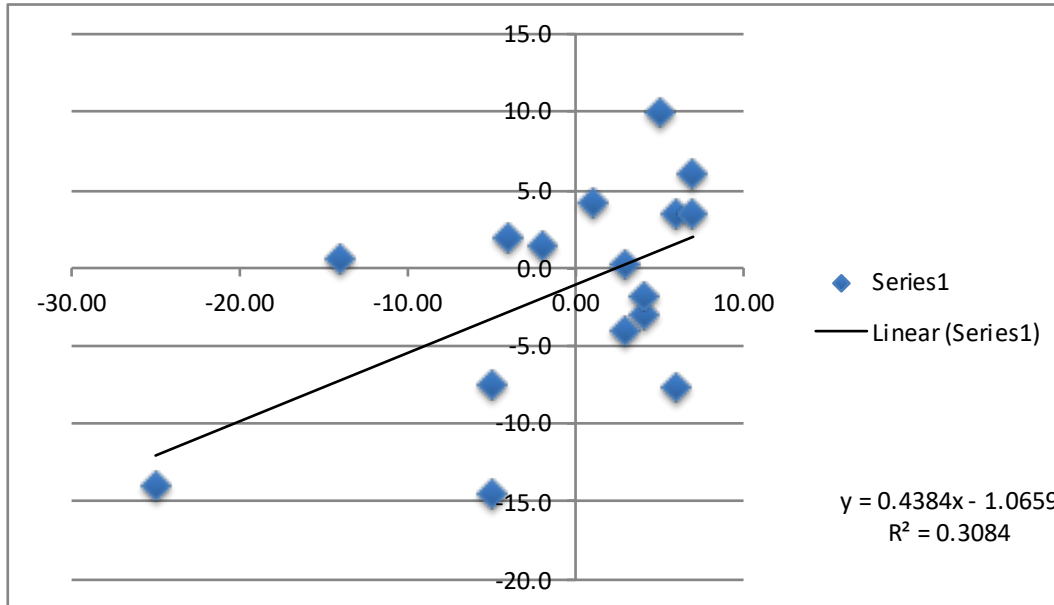
SQRT square root

Spearman's rho Spearman's rank correlation coefficient

BMI-SDS body mass index standard deviation score

TICS Trierer Stress Inventar questionnaire

Correlation between delta TICS T0-T2 (x axis) & and delta WC T0-T2 (y axis)



$r = 0.56$
 $r^2 = 0.31$
 $n = 16$
 $t_c = 0.18$
 $t = 2.50, p = 0.026$
 Spearman's rho = 0.50, $p = 0.049$

Abbreviations

delta TICS T0-T2	TICS score at T2 (12 months) minus TICS score at T0 (start)
delta WC T0-T2	Waist circumference at T2 (12 months) minus waist circumference at T0 (start)
r	correlation coefficient
n	number of observations
t_c	t-test for the significance of correlation coefficient, $t=r/\text{SQRT}((1-r^2)/(n-2))$
SQRT	square root
Spearman's rho	Spearman's rank correlation coefficient
TICS	Trierer Stress Inventar questionnaire