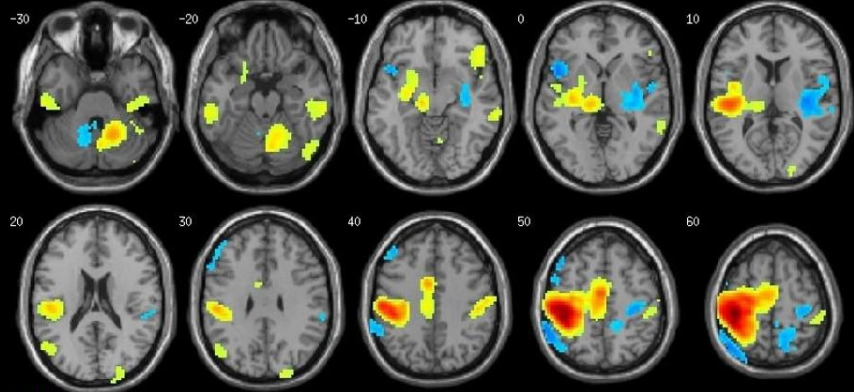
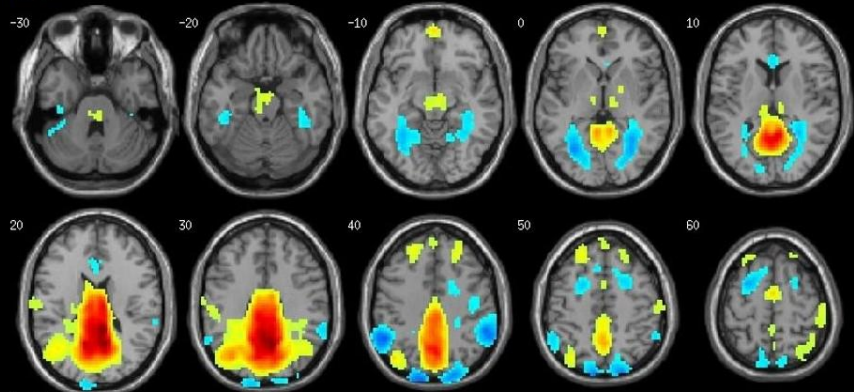


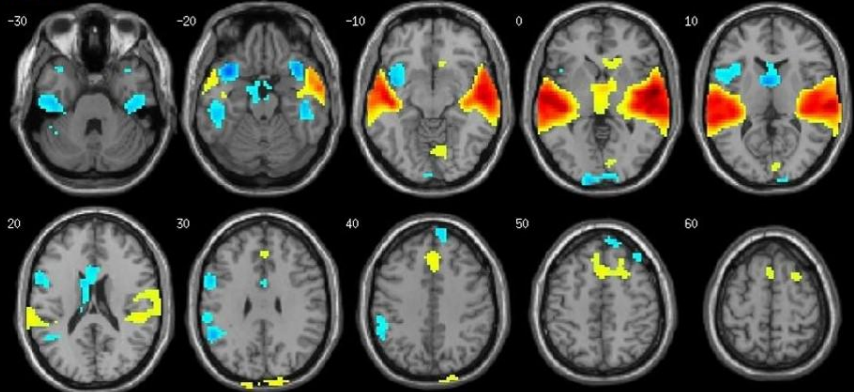
IC7



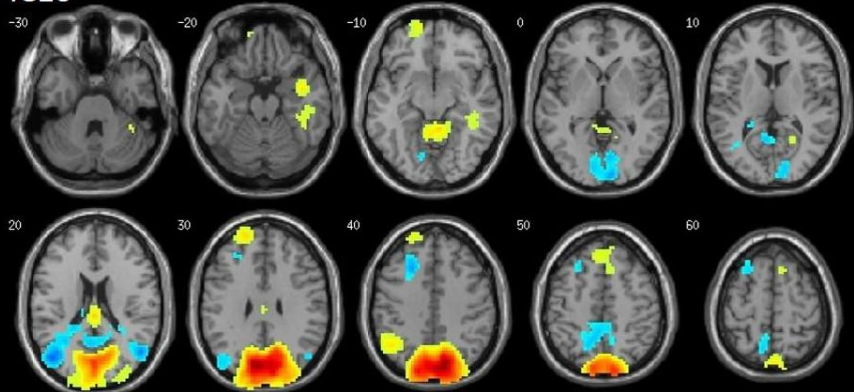
IC8



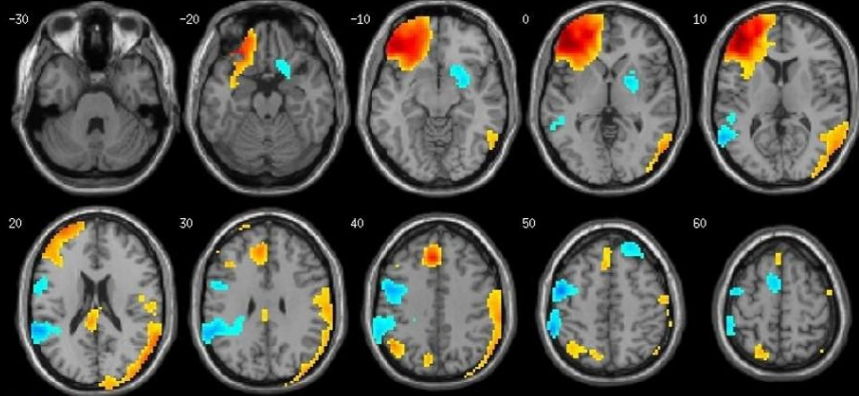
IC9



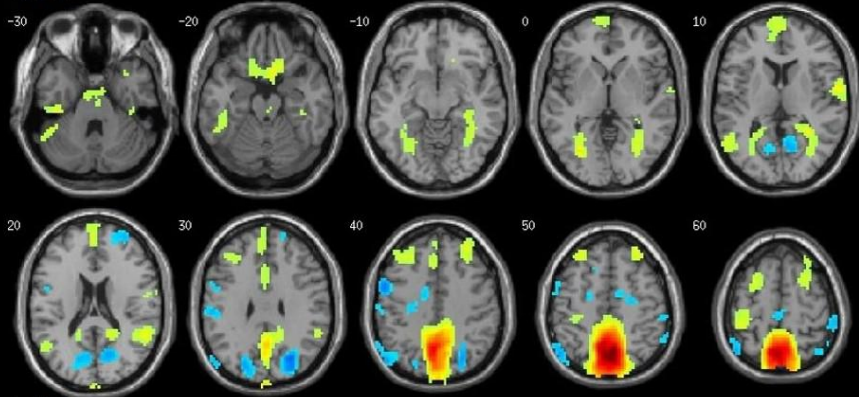
IC10



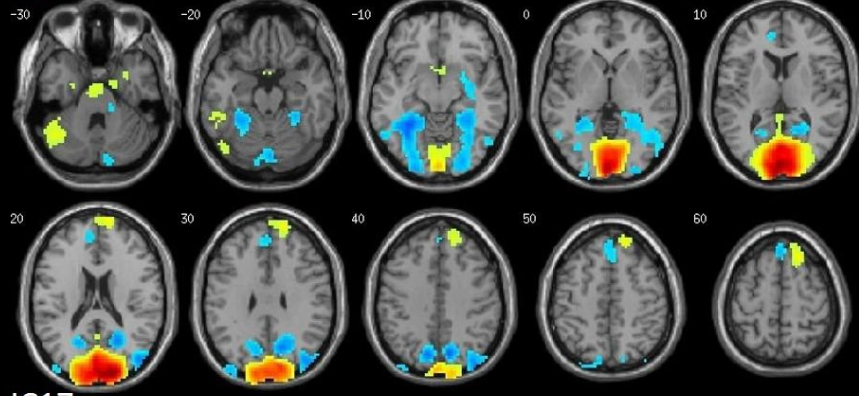
IC11



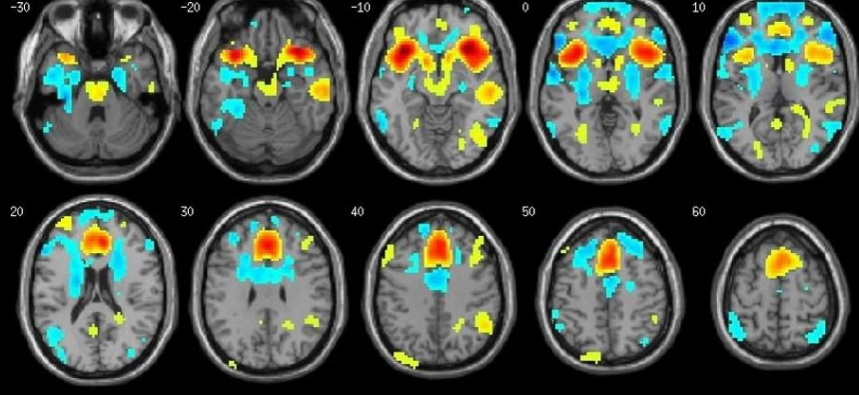
IC13



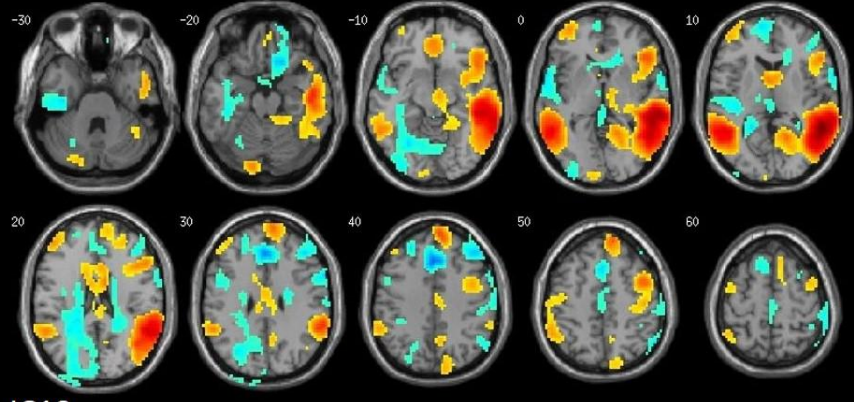
IC14



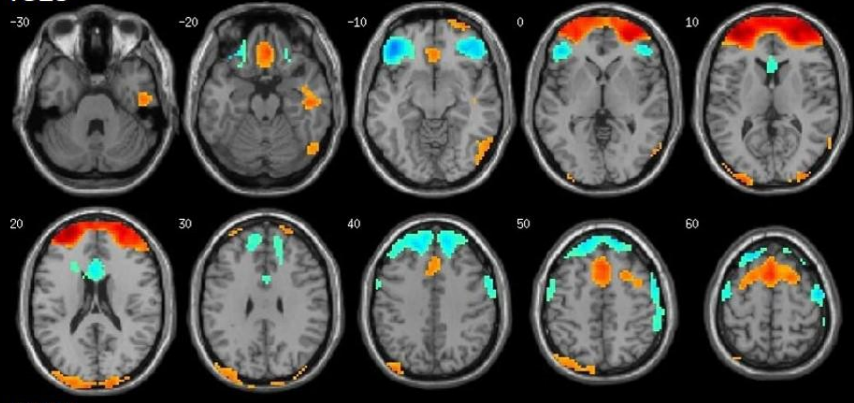
IC17



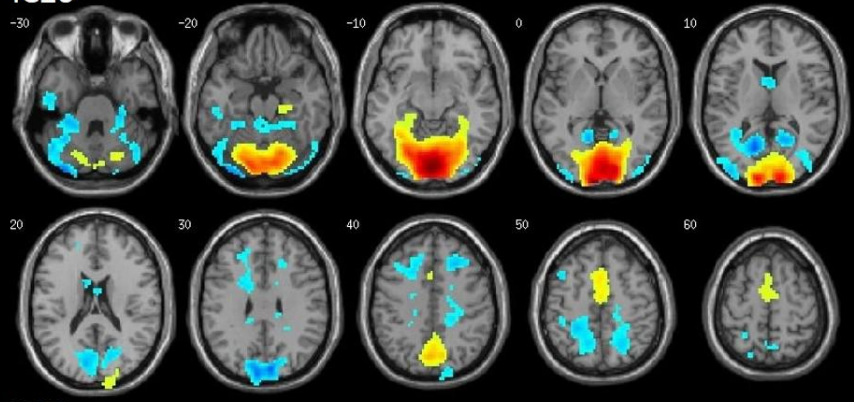
IC18



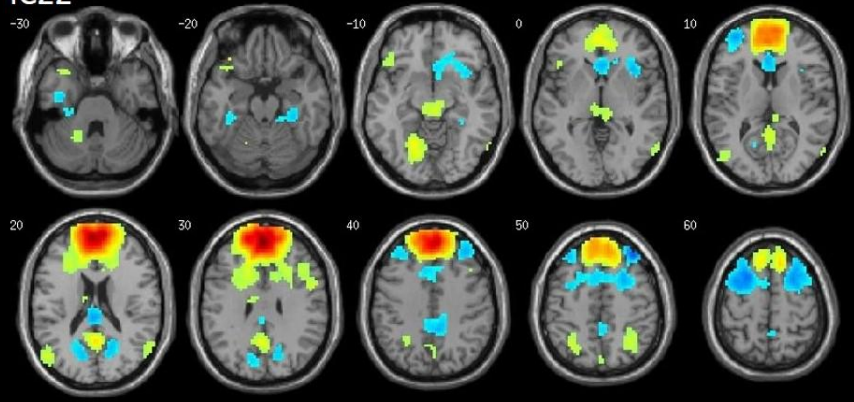
IC19



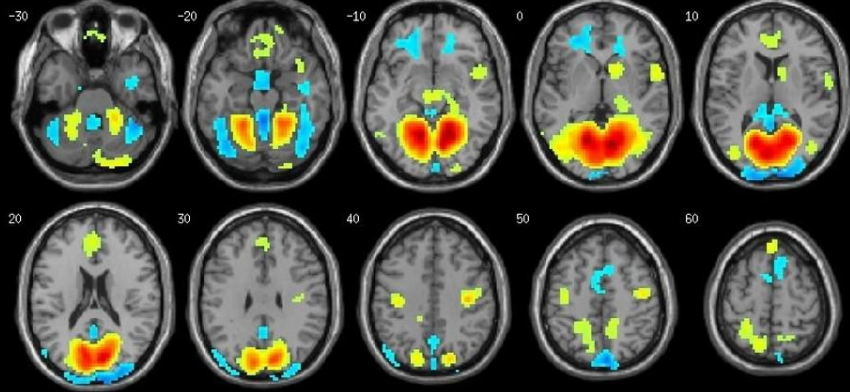
IC20



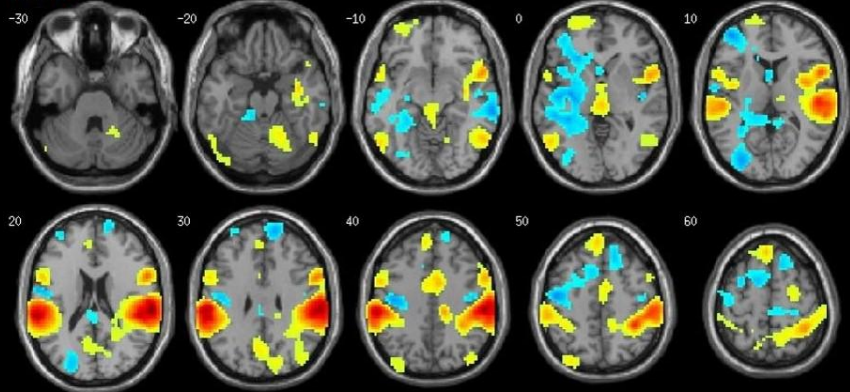
IC22



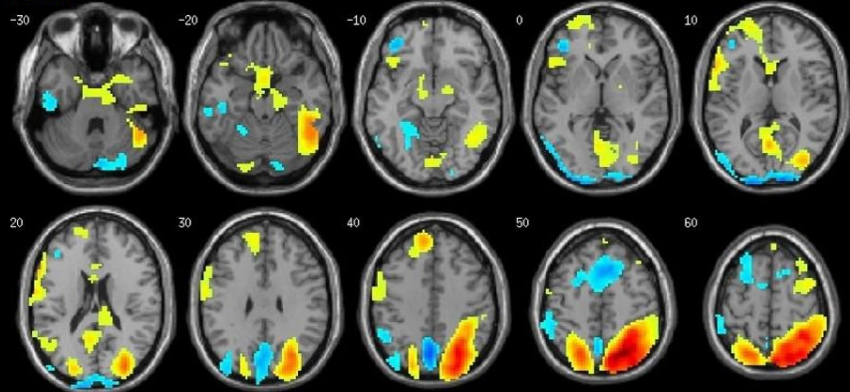
IC23



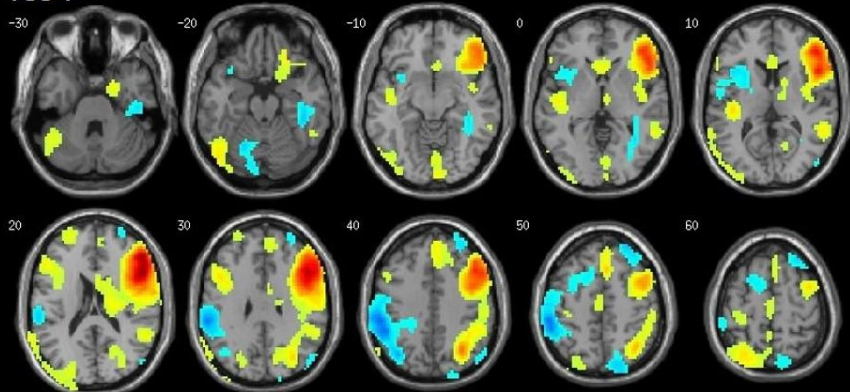
IC31



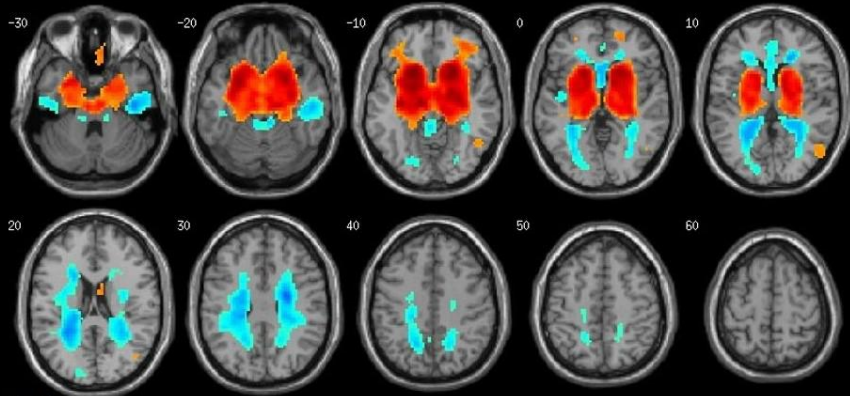
IC33



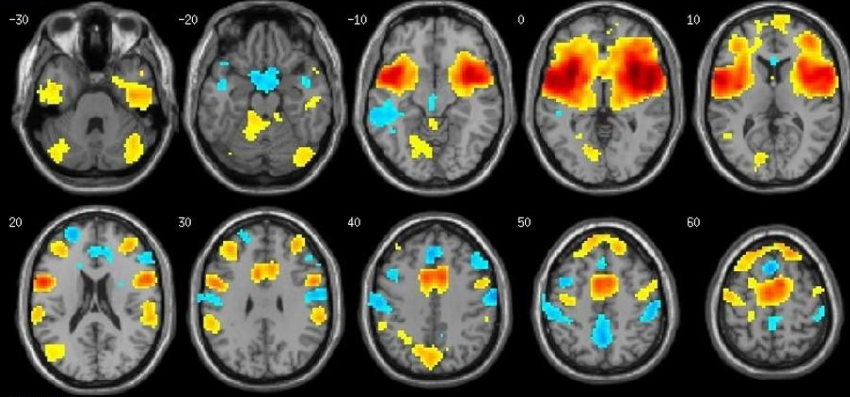
IC34



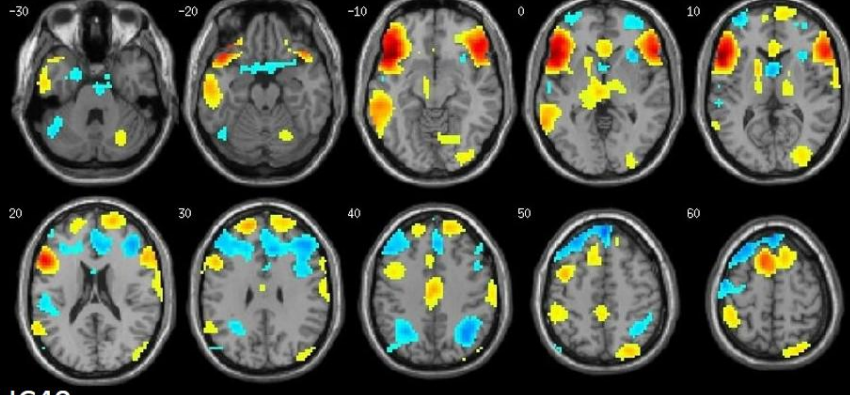
IC35



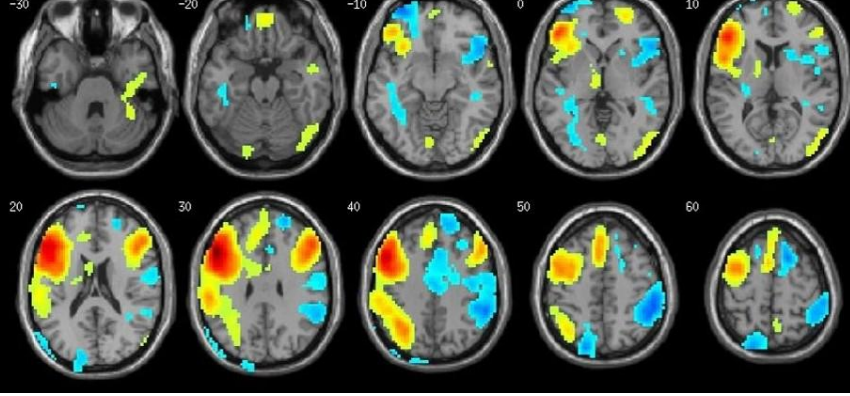
IC36



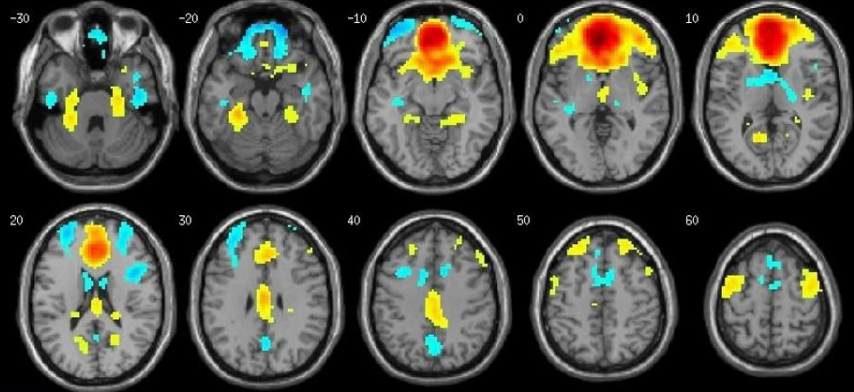
IC37



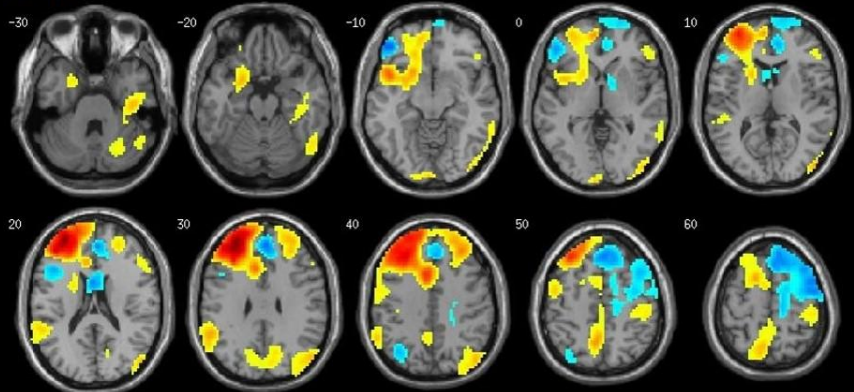
IC40



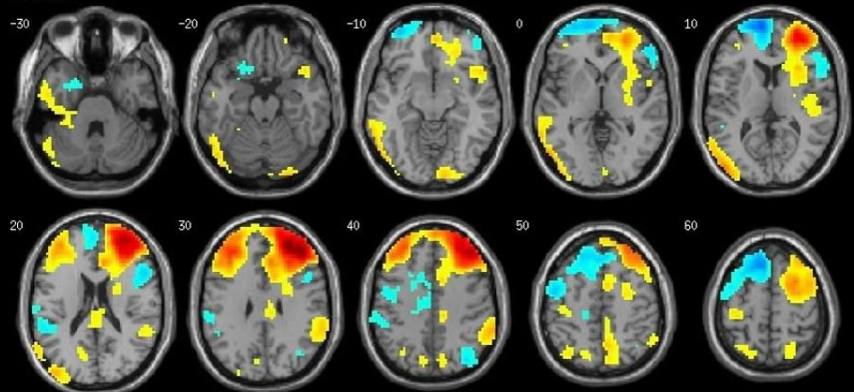
IC44



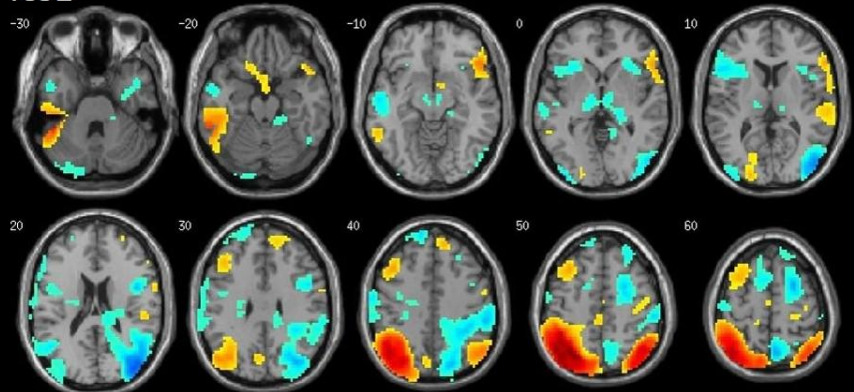
IC45



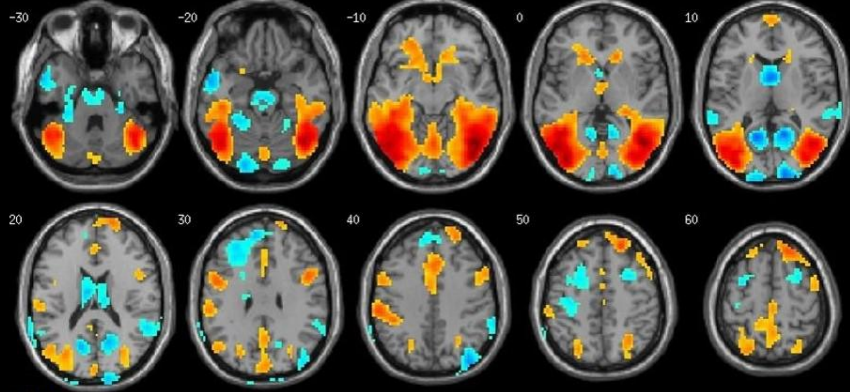
IC50



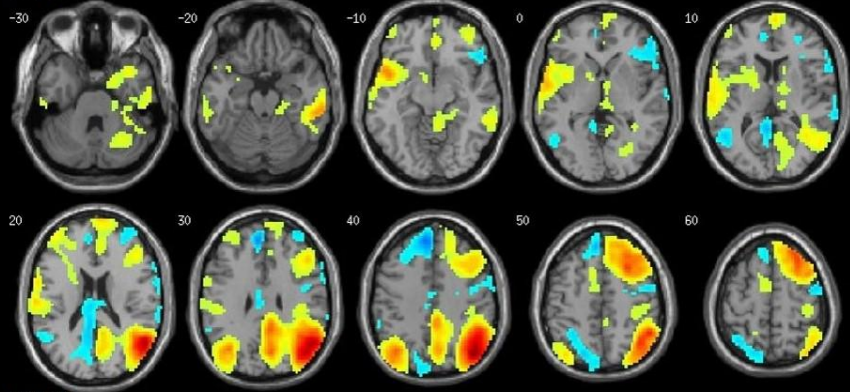
IC52



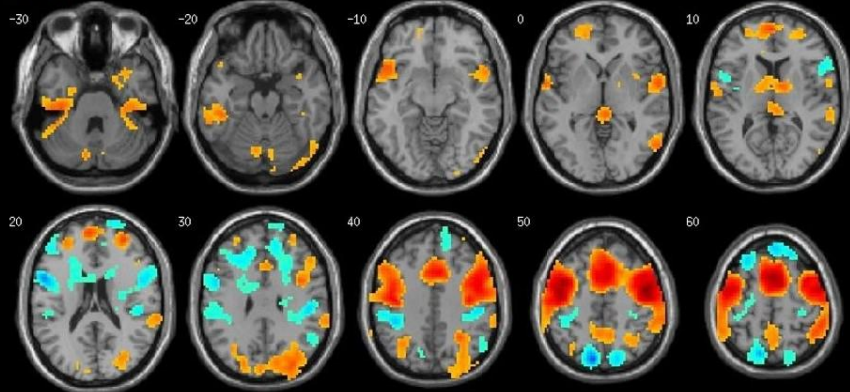
IC54



IC55



IC57



IC60

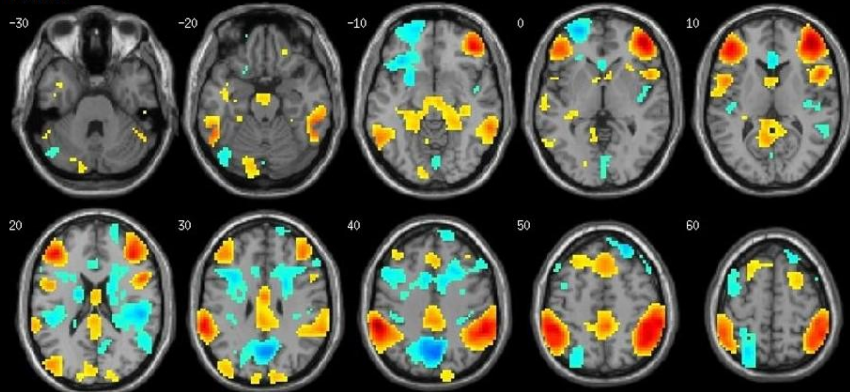


Figure S2. Spatial distributions of 32 ICs. Colors on the Montreal Neurological Institute (MNI) T1 templates demonstrate the spatial distribution of the 32 ICs labeled by their IC numbers. The red and blue colors represent positive and negative sub-networks of each IC, respectively. Only clusters surviving corrected voxel height $p < 0.05$ (FDR-corrected for whole-brain analysis) and $k > 100$ are shown. The numbers at top-left of each brain image indicates the Z coordinates in MNI space. The color bar indicates t values. Right side of the brain image is the right side of the brain.