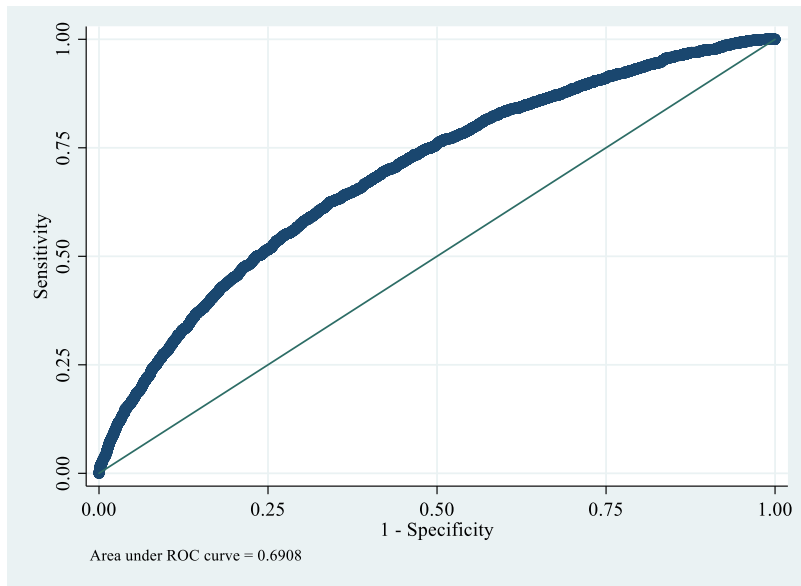
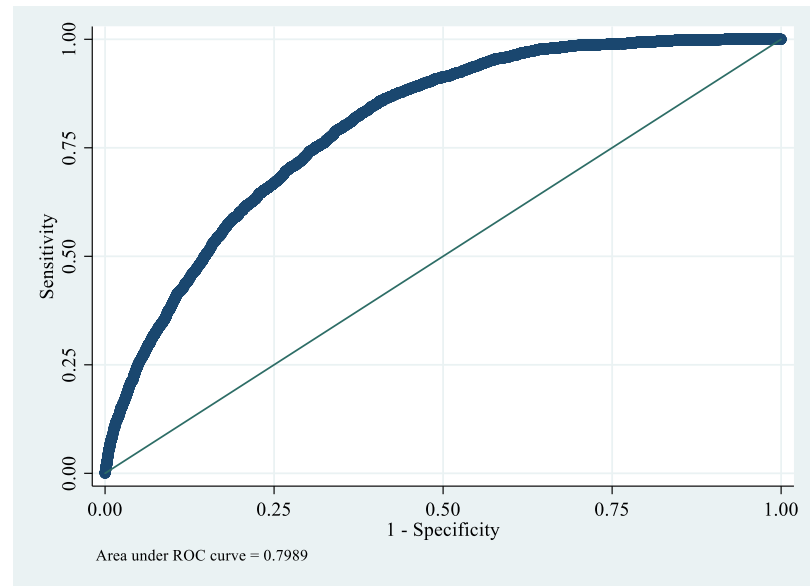


Figures S1a and S1b: The receiver operating characteristic (ROC) curves with respective area under the curve (AUC)

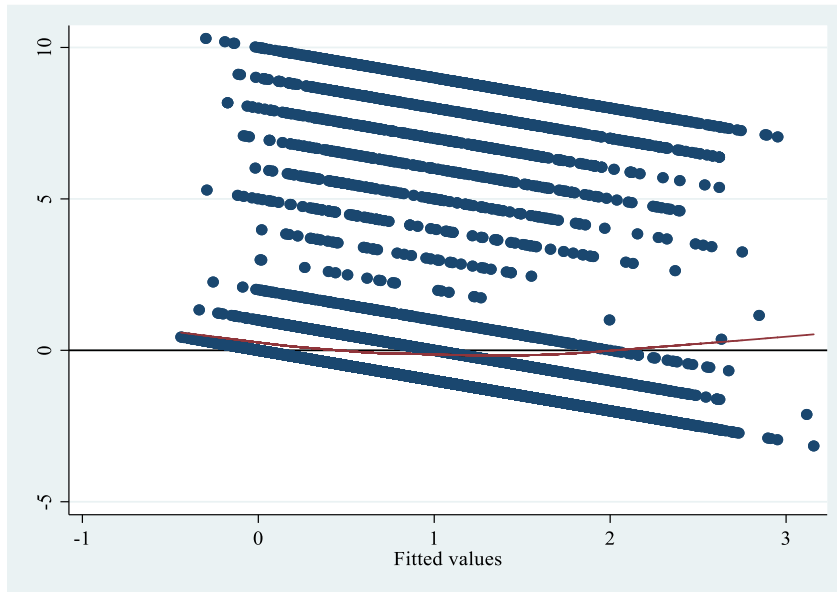


a; Outcome: Depressive symptoms

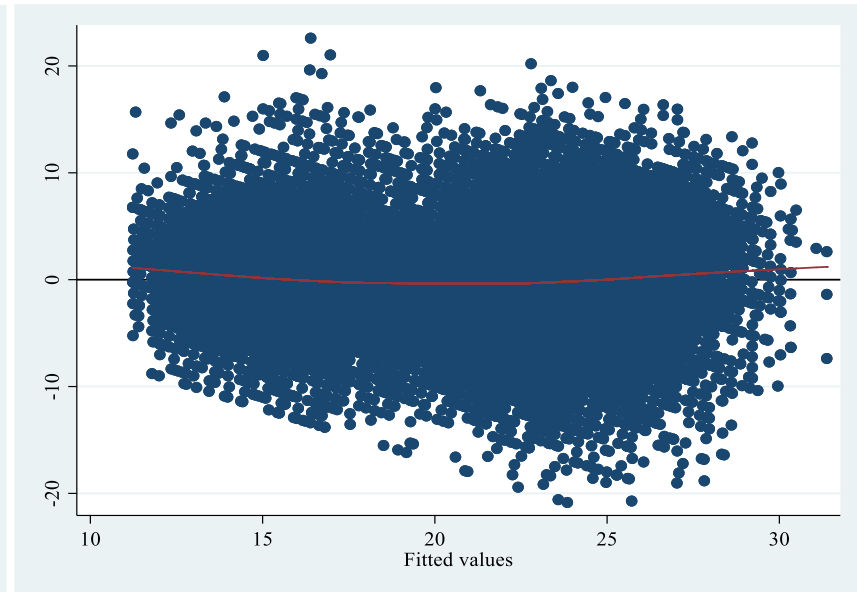


b; Outcome: Cognitive impairment

Figures S2a and S2b: Plots of residuals against fitted values (close to zero variation of mean of the residuals (y-axis) against fitted values (x-axis) of predictors suggests no violation of linearity)

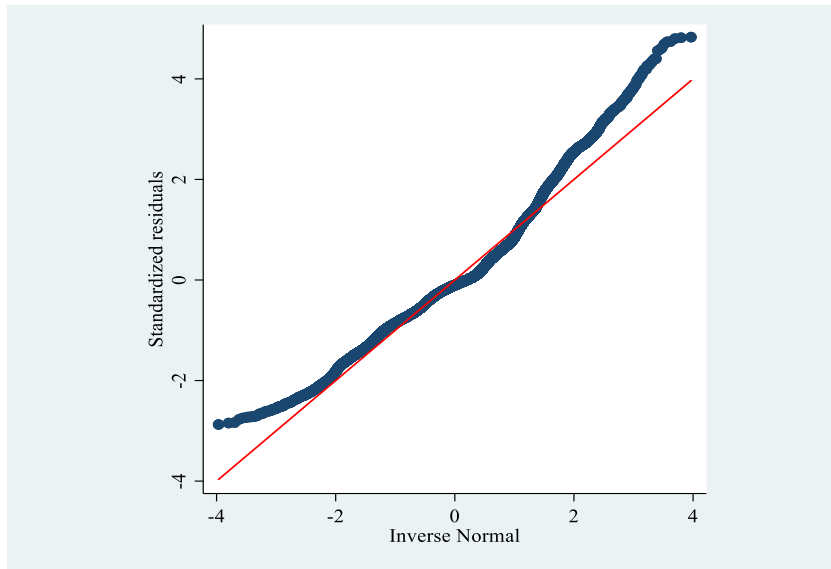


a; Outcome: Depressive symptoms

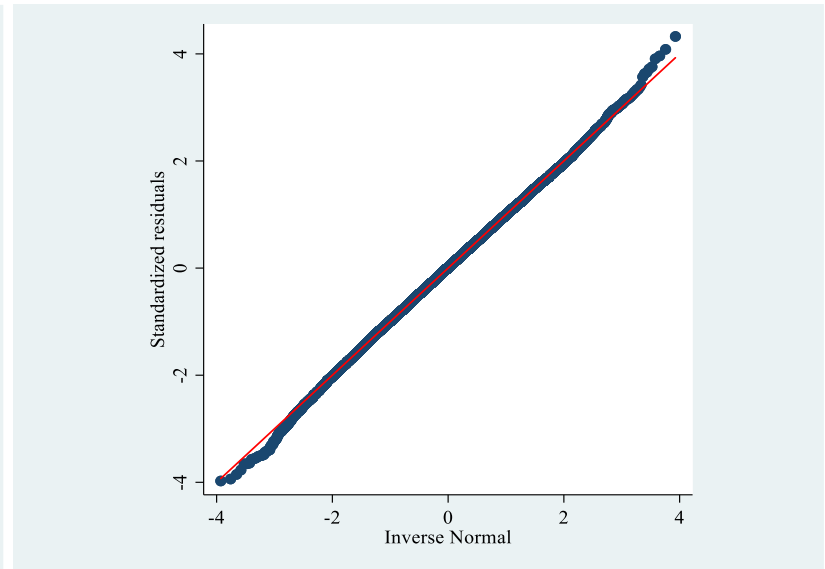


b; Outcome: Cognitive impairment

Figures S3a and S3b: Quantile-quantile plots showing the normality of the residuals



a; Outcome: Depressive symptoms



b; Outcome: Cognitive impairment

Table S1: VIF estimates for the selected explanatory variables

Variables	Sub-categories	VIF	1/VIF
Age (years)	60-69		
	70-79	1.09	0.918416
	80+	1.12	0.89233
Sex	Male		
	Female	1.29	0.773771
Marital status	Currently in union		
	Widowed	1.54	0.649921
	Others	1.06	0.939649
Living arrangements	Living alone		
	With spouse	4.98	0.200711
	Others	4.57	0.219032
Educational status	No/ primary		
	Secondary	1.23	0.812354
	Higher	1.3	0.767886
Self-rated health	Good		
	Poor	1.04	0.962564
MPCE quintile	Poorest		
	Poorer	1.65	0.606985
	Middle	1.69	0.590296
	Richer	1.74	0.574321
	Richest	1.87	0.533453
Religion	Hindu		
	Muslim	1.07	0.931678
	Others	1.39	0.720581
Caste	SC/ST		
	OBC	1.64	0.610384
	Others	1.72	0.580249
Place of residence	Urban		
	Rural	1.23	0.810669
Region	North		
	Central	1.62	0.618253
	East	1.67	0.5983
	Northeast	1.64	0.609578
	West	1.97	0.50786
	South	1.47	0.678217
Mean VIF		1.73	