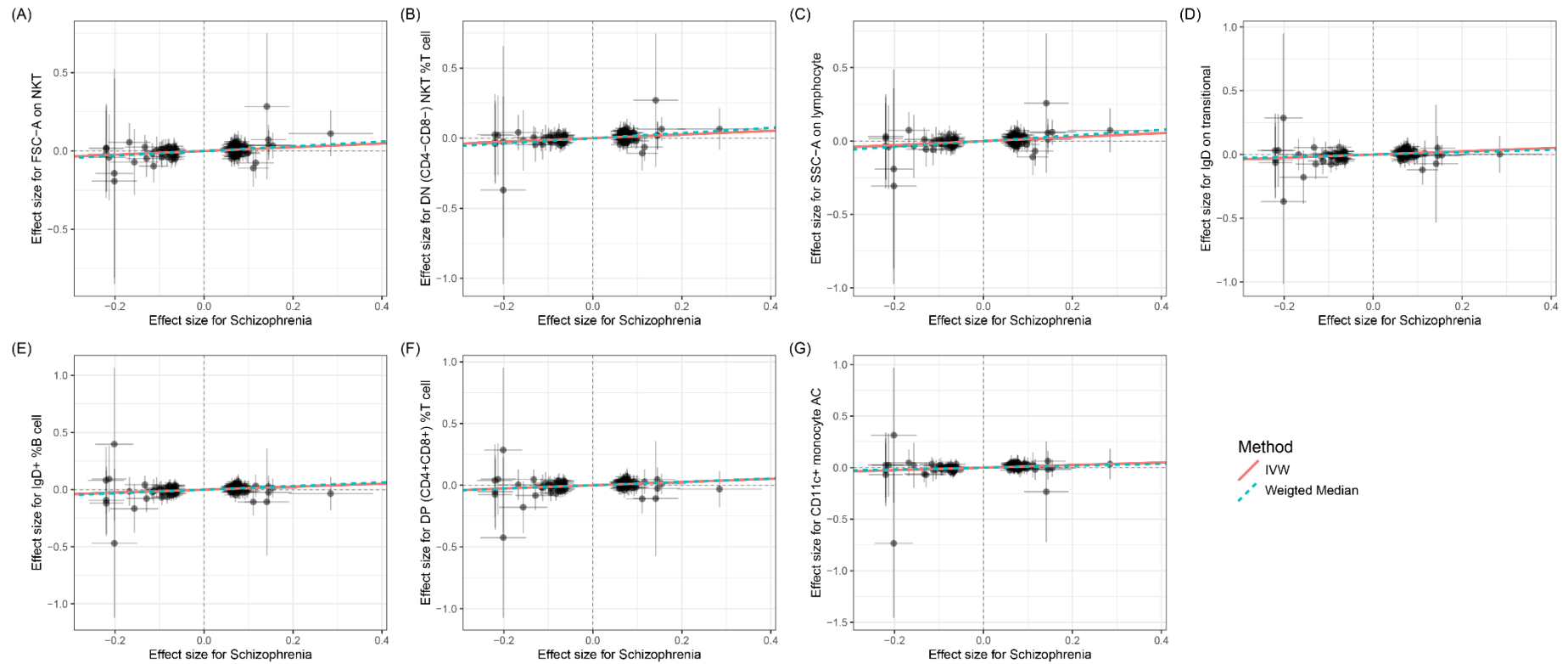


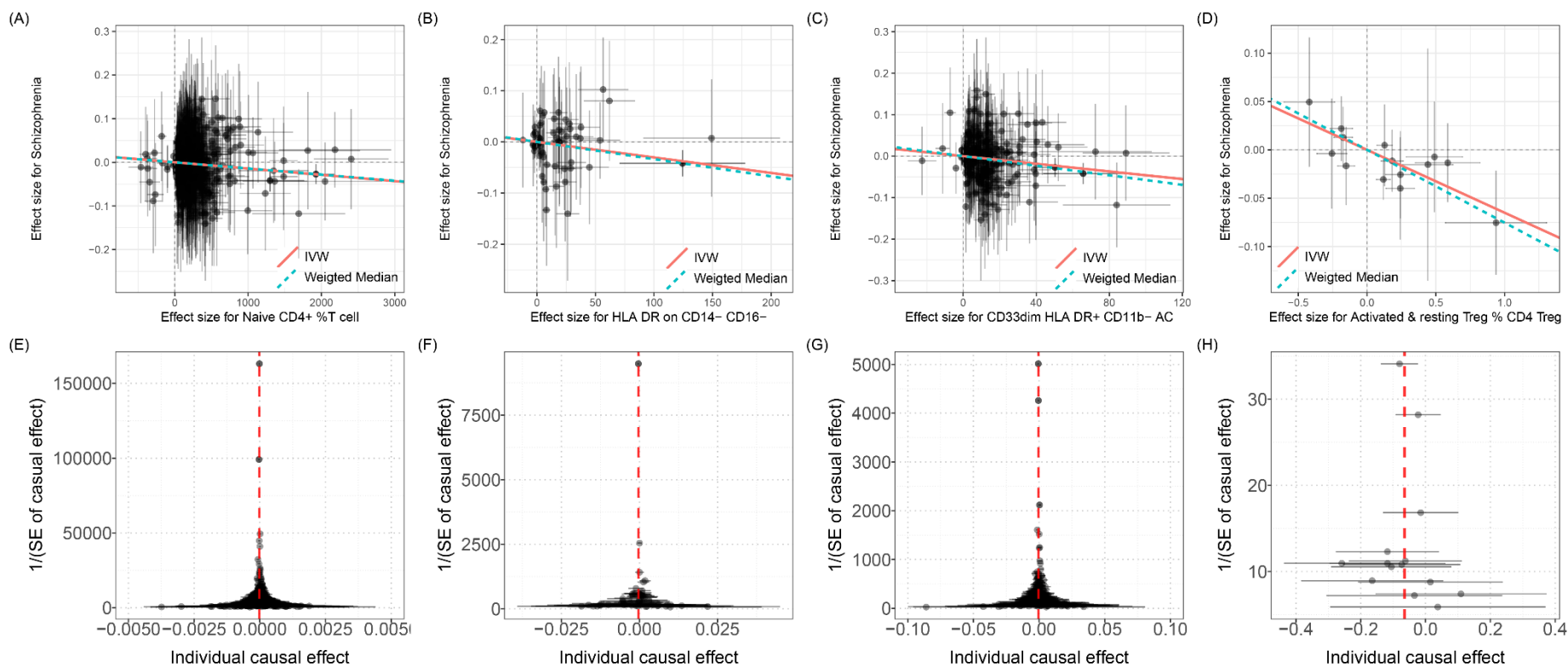
1 Supplementary Figures



2

3 **Supplementary Figure 1.** Causal effects of SCZ on immune cells concentration. (A) Scatter plot between FSC-A on NKT and SCZ risk; (B)

- 4 Scatter plot between DN (CD4- CD8-) NKT and SCZ risk; (C) Scatter plot between SSC-A on lymphocyte and SCZ risk; (D) Scatter plot between
- 5 IgD on transitional and SCZ risk; (E) Scatter plot between IgD+ %B cell and SCZ risk; (F) Scatter plot between DP (CD4+ CD8+)% T cell and
- 6 SCZ risk; (G) Scatter plot between CD11c+ monocyte AC and SCZ risk.



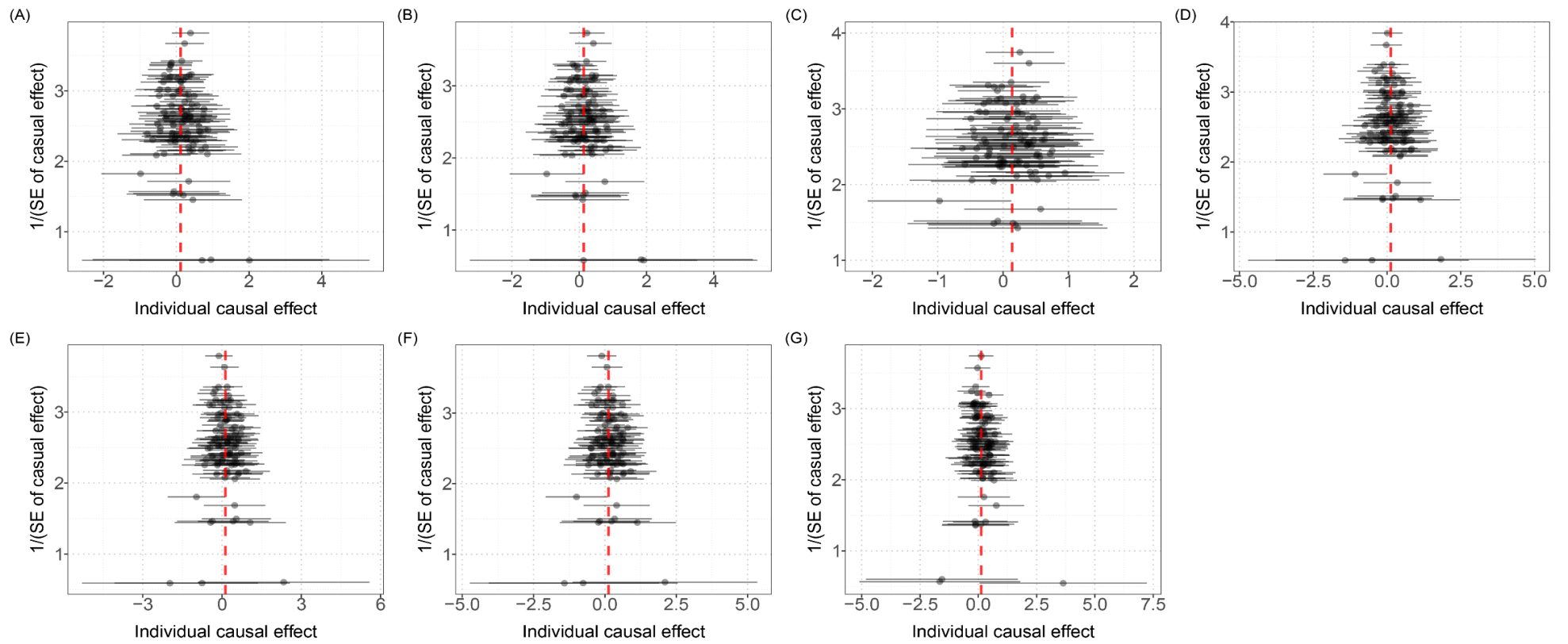
7

8 **Supplementary Figure 2.** Causal associations between immune cells and SCZ. (A) Scatter plot between Naïve CD4⁺ % T cell and SCZ risk; (B)

9 Scatter plot between HLA DR on CD14- CD16- and SCZ risk; (C) Scatter plot between CD33dim HLA DR+ CD11b- AC and SCZ risk; (D) Scatter

10 plot between Activated & resting Treg % CD4 Treg and SCZ risk; (E) Funnel plot between Naïve CD4⁺ % T cell and SCZ risk; (F) Funnel plot

- 11 between HLA DR on CD14- CD16- and SCZ risk; (G) Funnel plot between CD33dim HLA DR+ CD11b- AC and SCZ risk; (H) Funnel plot
- 12 between Activated & resting Treg % CD4 Treg and SCZ risk.



13

14 **Supplementary Figure 3.** Funnel plots between SCZ and immune cells.