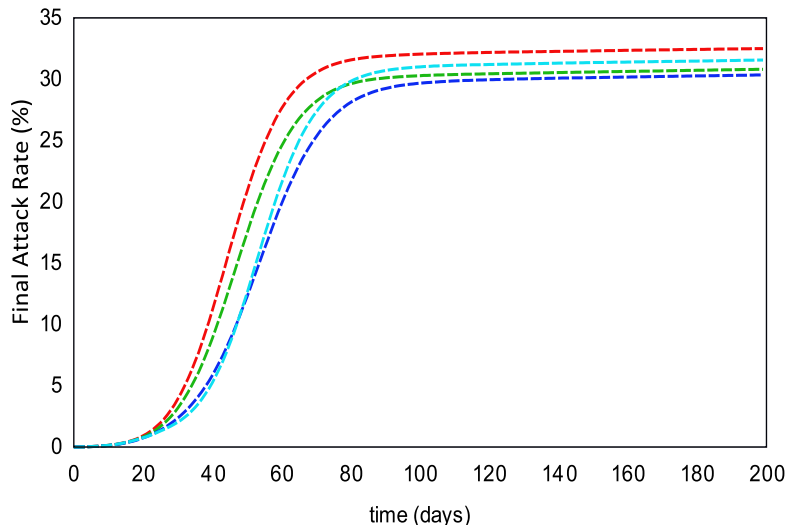
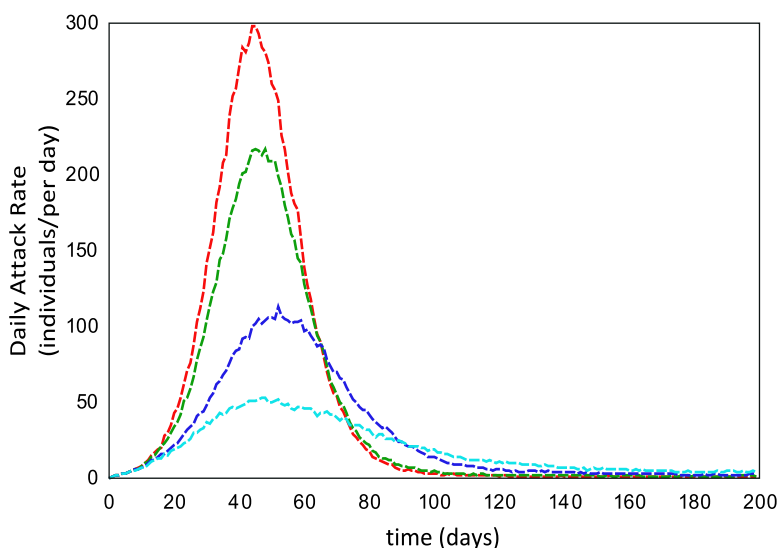


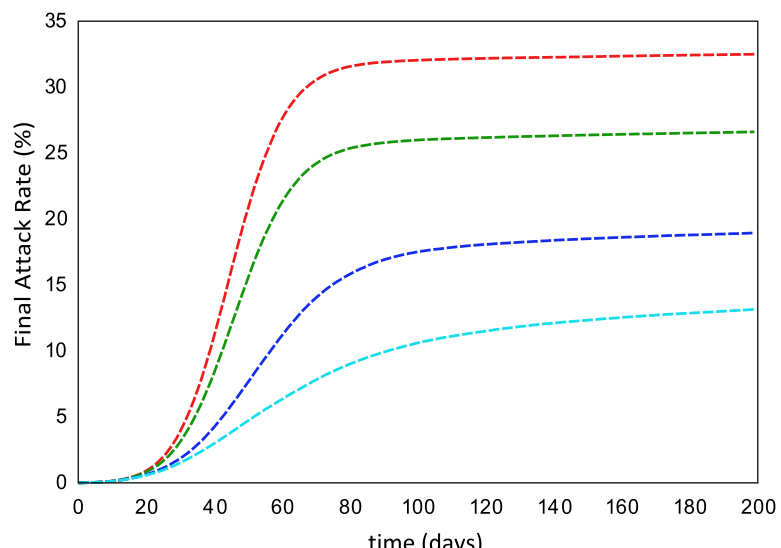
Baseline ---
 School Case Isolation 1 week ---
 Individual School Closure 1 week ---
 All School Closure 1 week ---



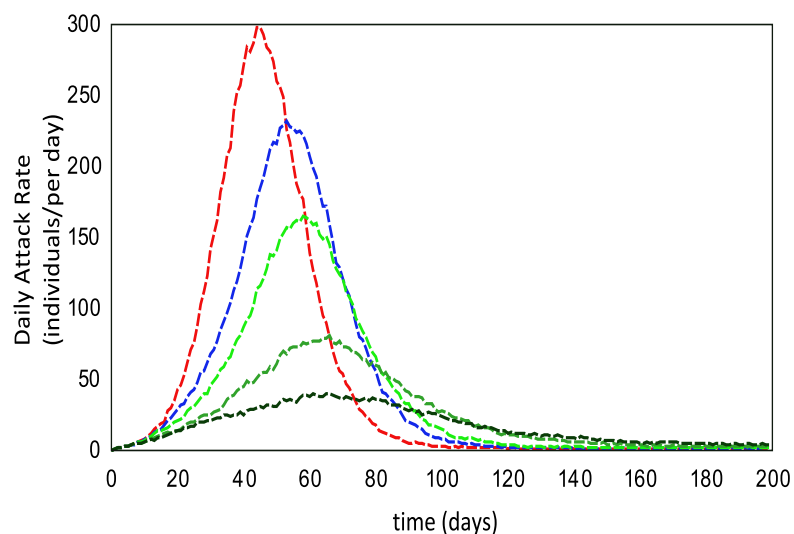
Baseline ---
 School Case Isolation 1 week ---
 Individual School Closure 1 week ---
 All School Closure 1 week ---



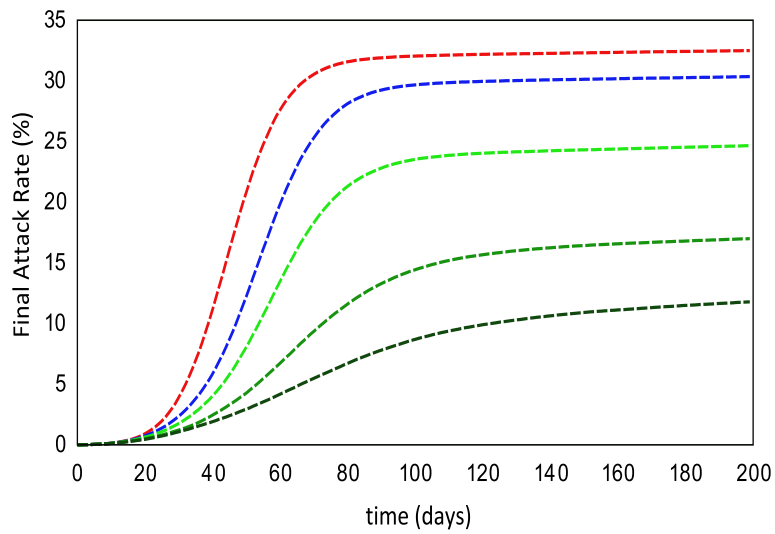
No AV --- T --- T+H --- T+H+E ---



No AV --- T --- T+H --- T+H+E ---



Baseline ---
 No AV + Individual School Closure 1 week ---
 T + Individual School Closure 1 week ---
 T + H + Individual School Closure 1 week ---
 T + H + E + Individual School Closure 1 week ---



Baseline ---
 No AV + Individual School Closure 1 week ---
 T + Individual School Closure 1 week ---
 T + H + Individual School Closure 1 week ---
 T + H + E + Individual School Closure 1 week ---