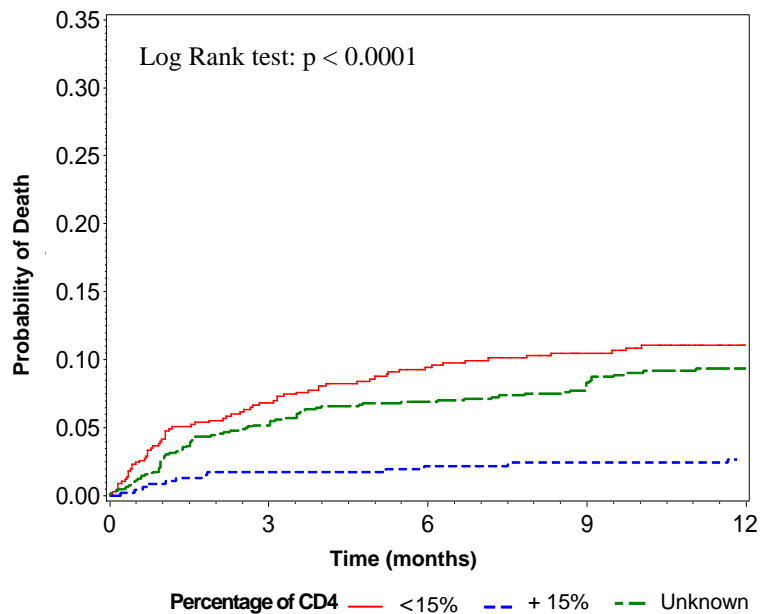
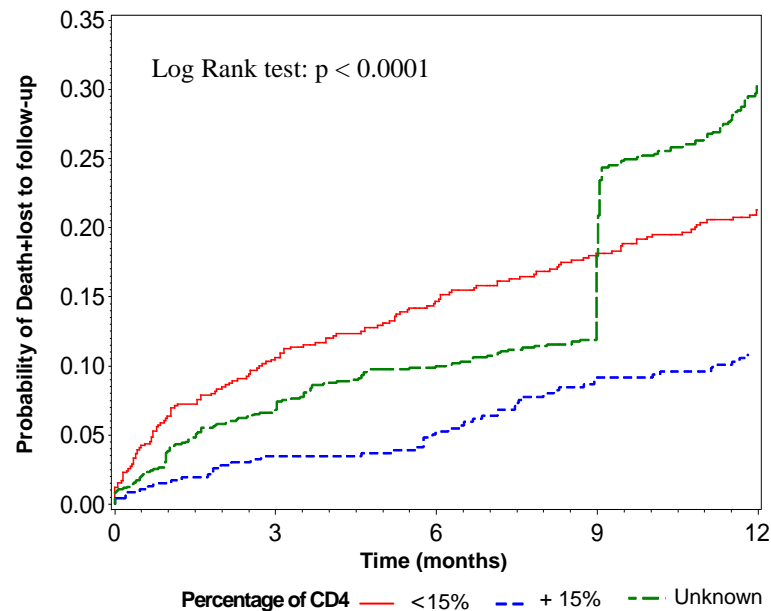


(A)



(B)



Percentage of CD4 at baseline	Month-6		Month-12		Month-6		Month-12	
	Children at risk	Probability (95% CI)	Children at risk	Probability (95% CI)	Children at risk	Probability (95% CI)	Children at risk	Probability (95% CI)
<15%	531	9.4 (7.4; 12.0)	439	11.0 (8.8; 13.8)	531	14.6 (12.2; 17.6)	439	21.2 (18.2; 24.6)
≥15%	417	2.2 (1.2; 4.0)	372	2.7 (1.5; 4.7)	417	5.2 (3.5; 7.7)	372	10.8 (8.2; 14.1)
Unknown	832	6.9 (5.5; 8.7)	562	9.3 (7.6; 11.4)	832	10.0 (8.3; 12.0)	562	30.5 (27.5; 33.6)

Baseline: at ART initiation