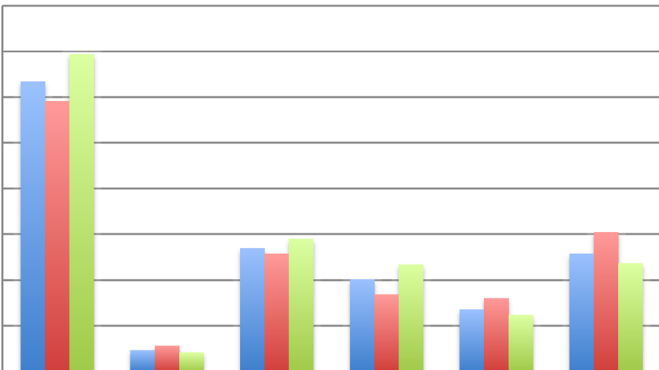


Percentage of Respondents

80
70
60
50
40
30
20
10
0



Diet

Medication

Exercise

Weight
Loss

Tobacco
Cessation

Unsure

Total

63.4

4.6

26.9

20.1

13.5

25.7

Men

59.1

5.6

25.7

16.8

16

30.4

Women

69.4

4.1

28.9

23.3

12.3

23.6