

Figure 1a. Effect of breastfeeding education on the rate of exclusive breastfeeding at day 1: individual vs group counseling.

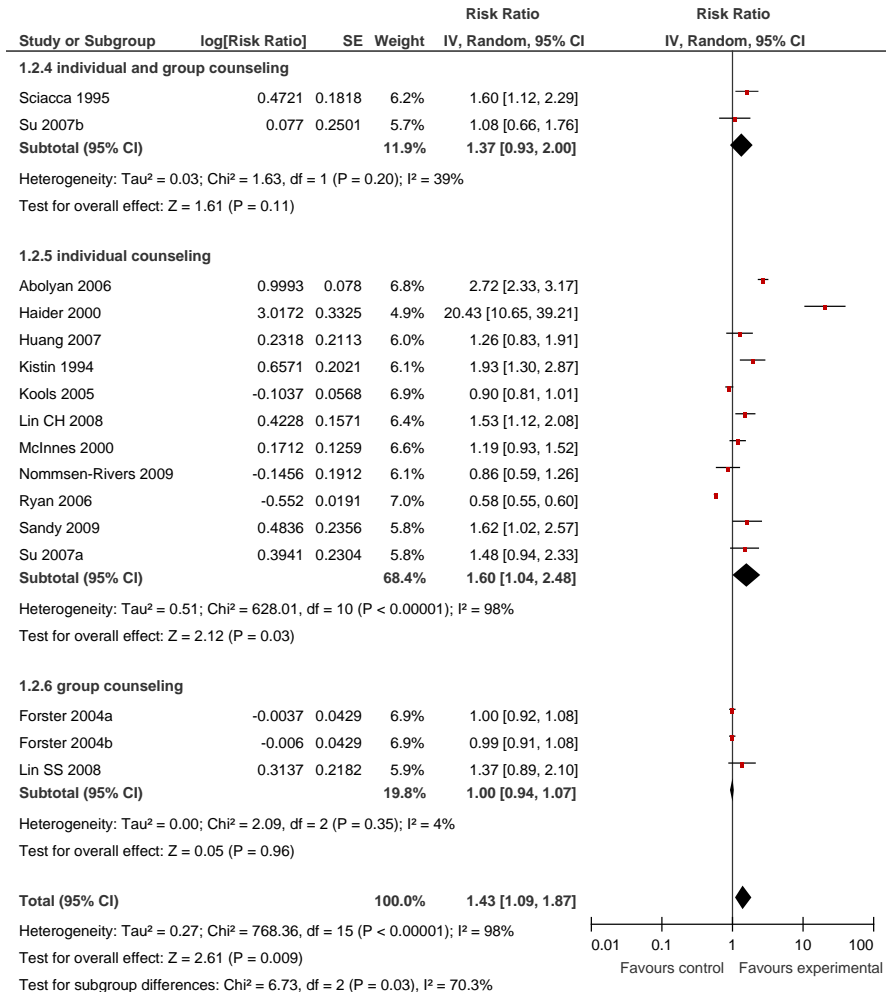


Figure 1b. Effect of breastfeeding education on the rate of exclusive breastfeeding at day 1: community- vs facility-based interventions.

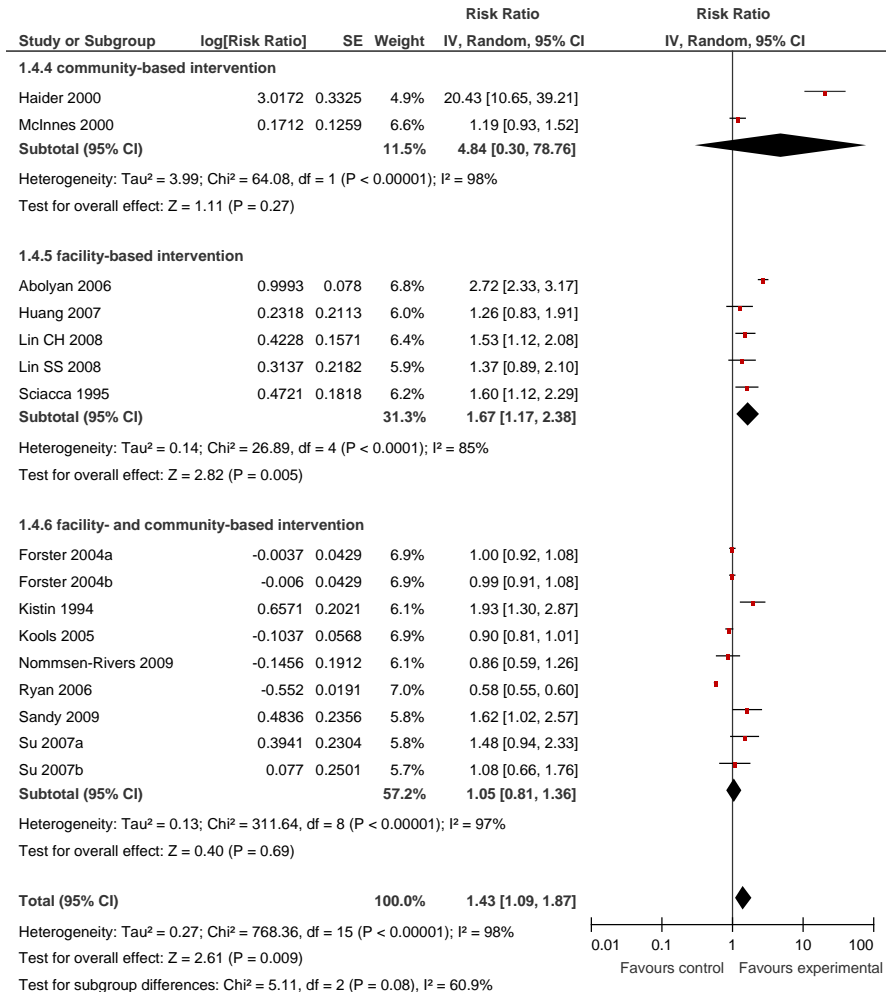


Figure 1c. Effect of breastfeeding education on the rate of exclusive breastfeeding at day 1: developing vs developed countries.

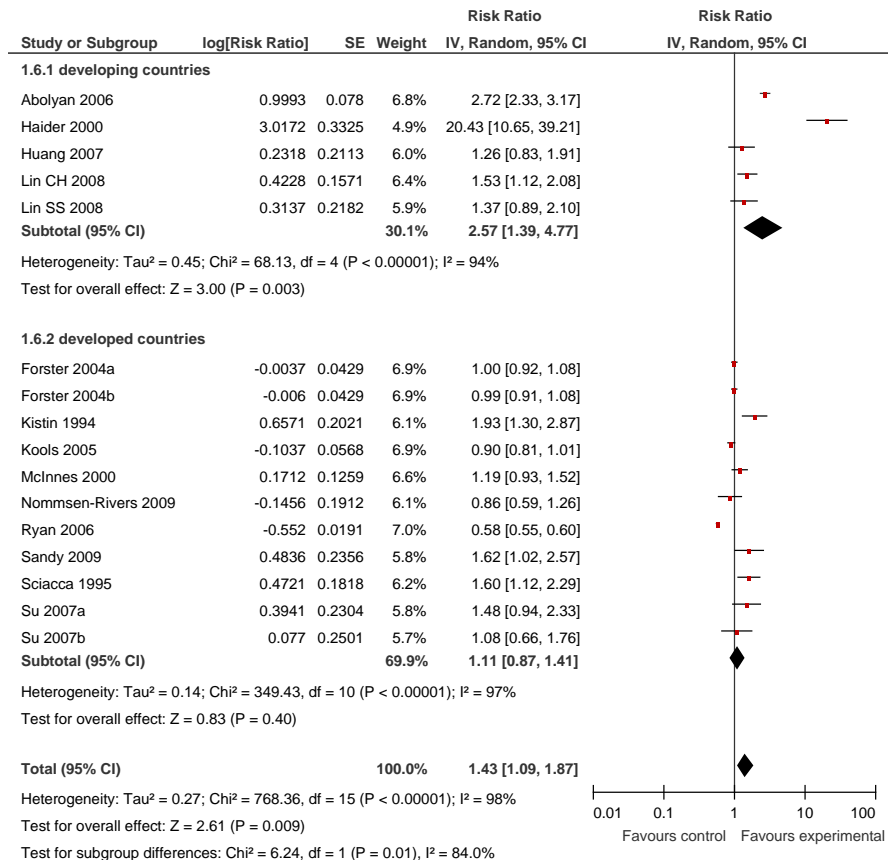


Figure 2a. Effect of breastfeeding education on the rate of exclusive breastfeeding at 0-1 month: individual vs group counseling.

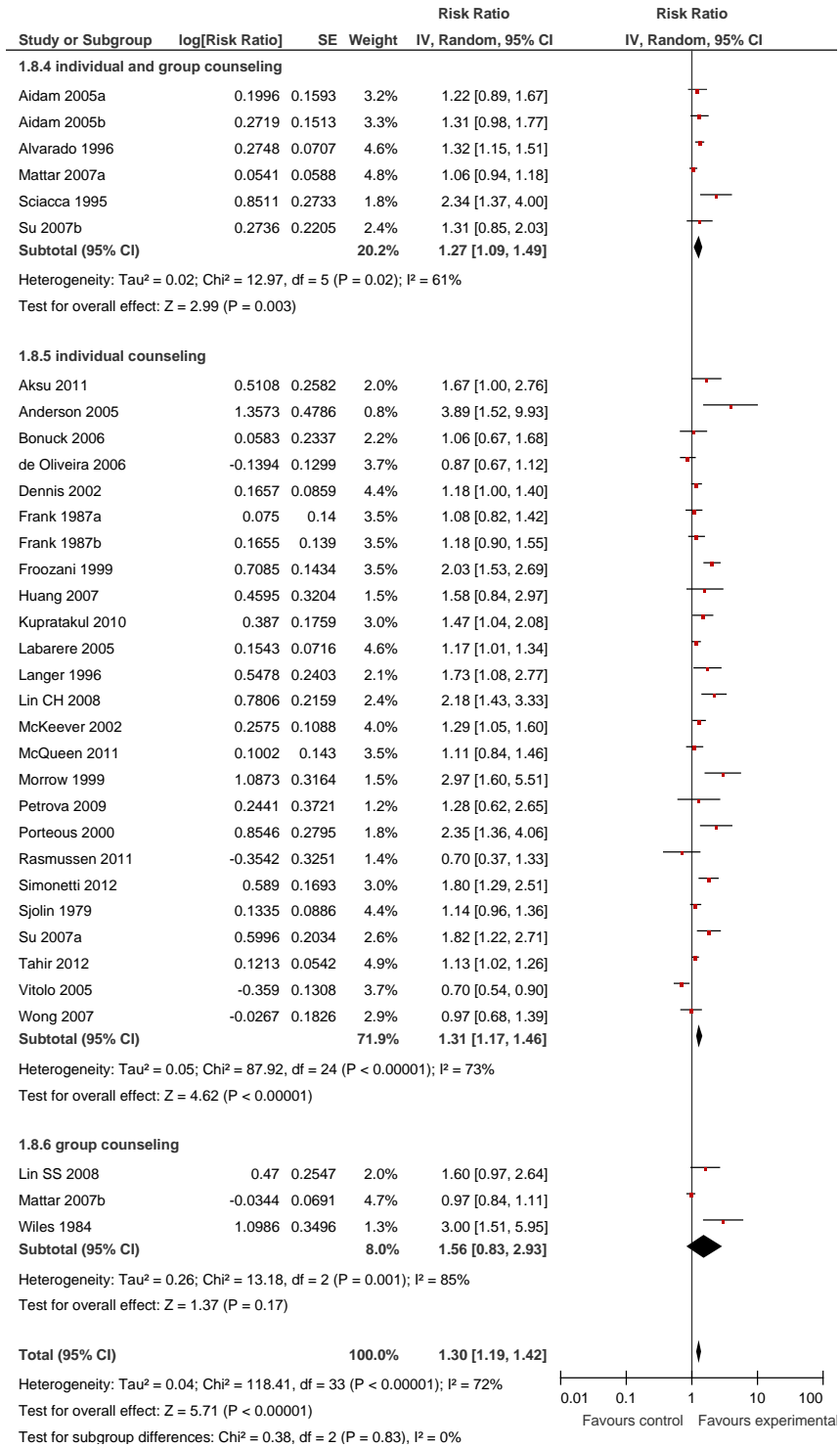


Figure 2b. Effect of breastfeeding education on the rate of exclusive breastfeeding at 0-1 month: community- vs facility-based interventions.

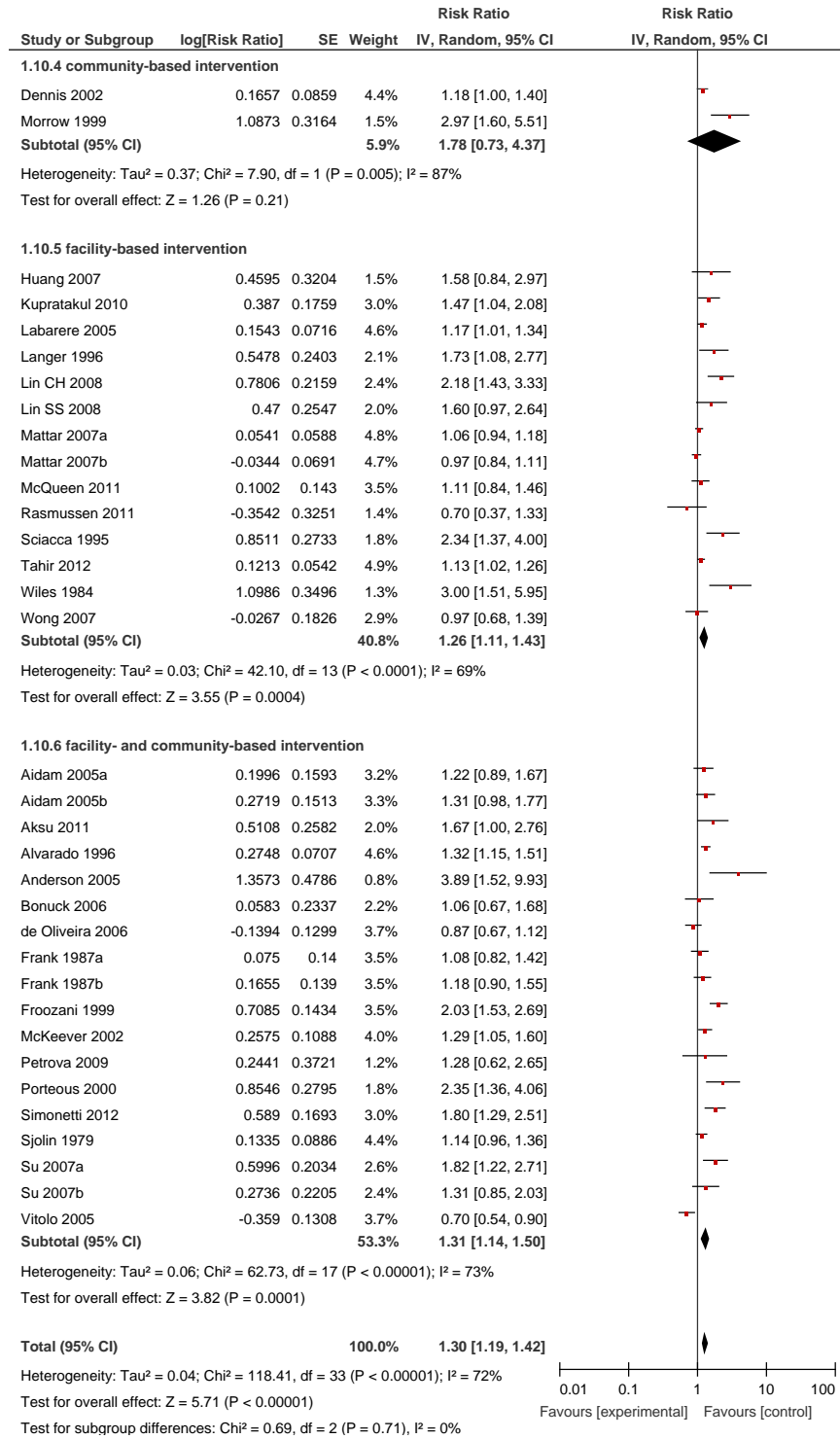


Figure 2c. Effect of breastfeeding education on the rate of exclusive breastfeeding at 0-1 month: developing vs developed countries.

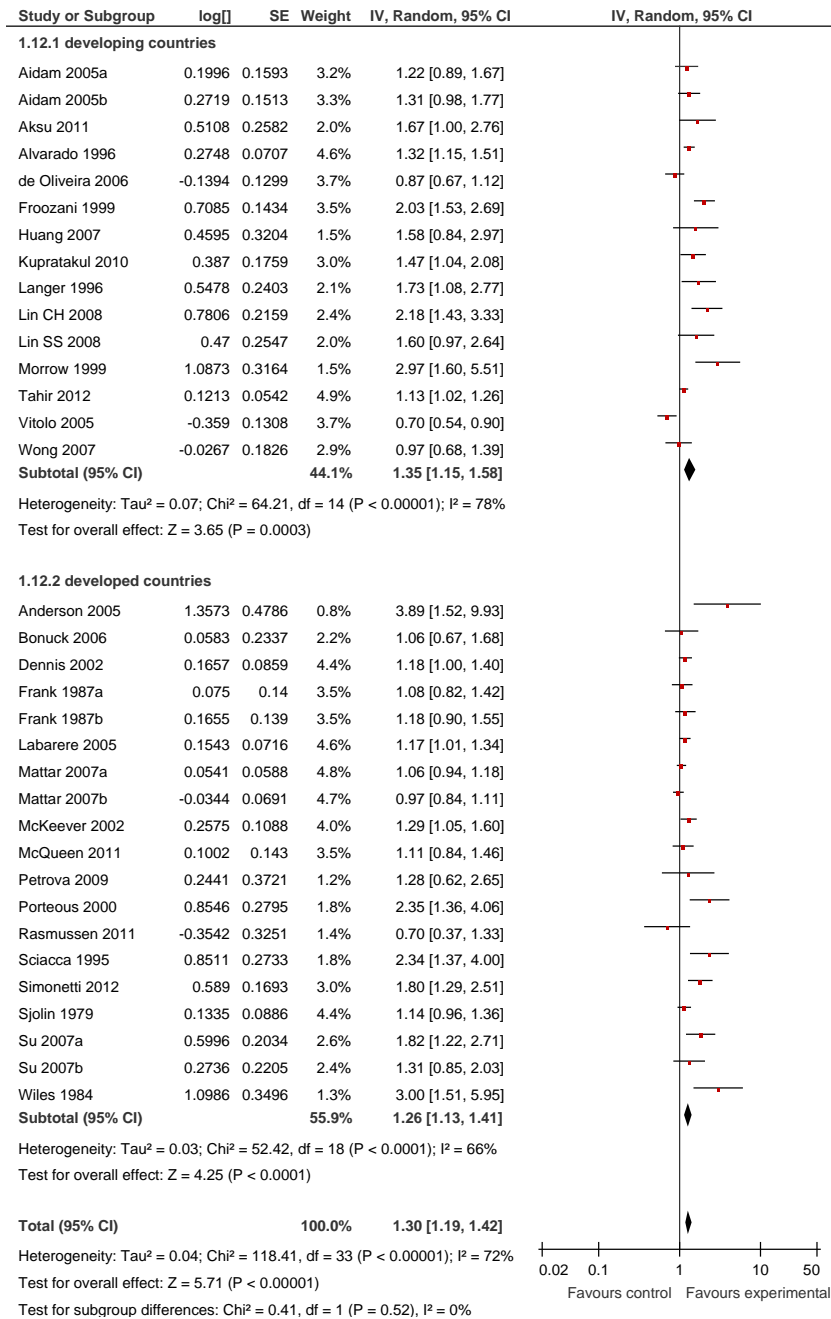


Figure 3a. Effect of breastfeeding education on the rate of exclusive breastfeeding at 1-6 months: individual vs group counseling.

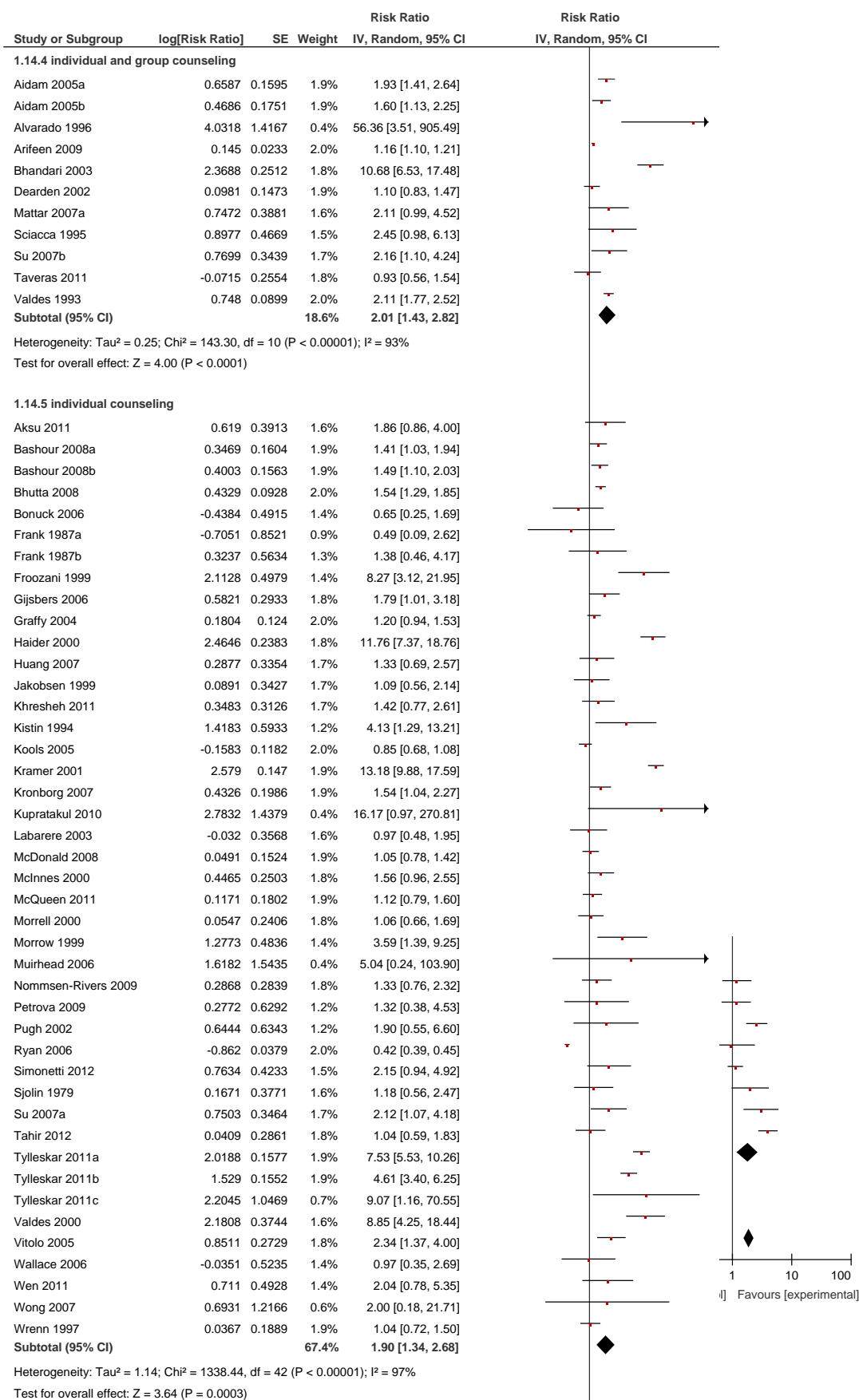
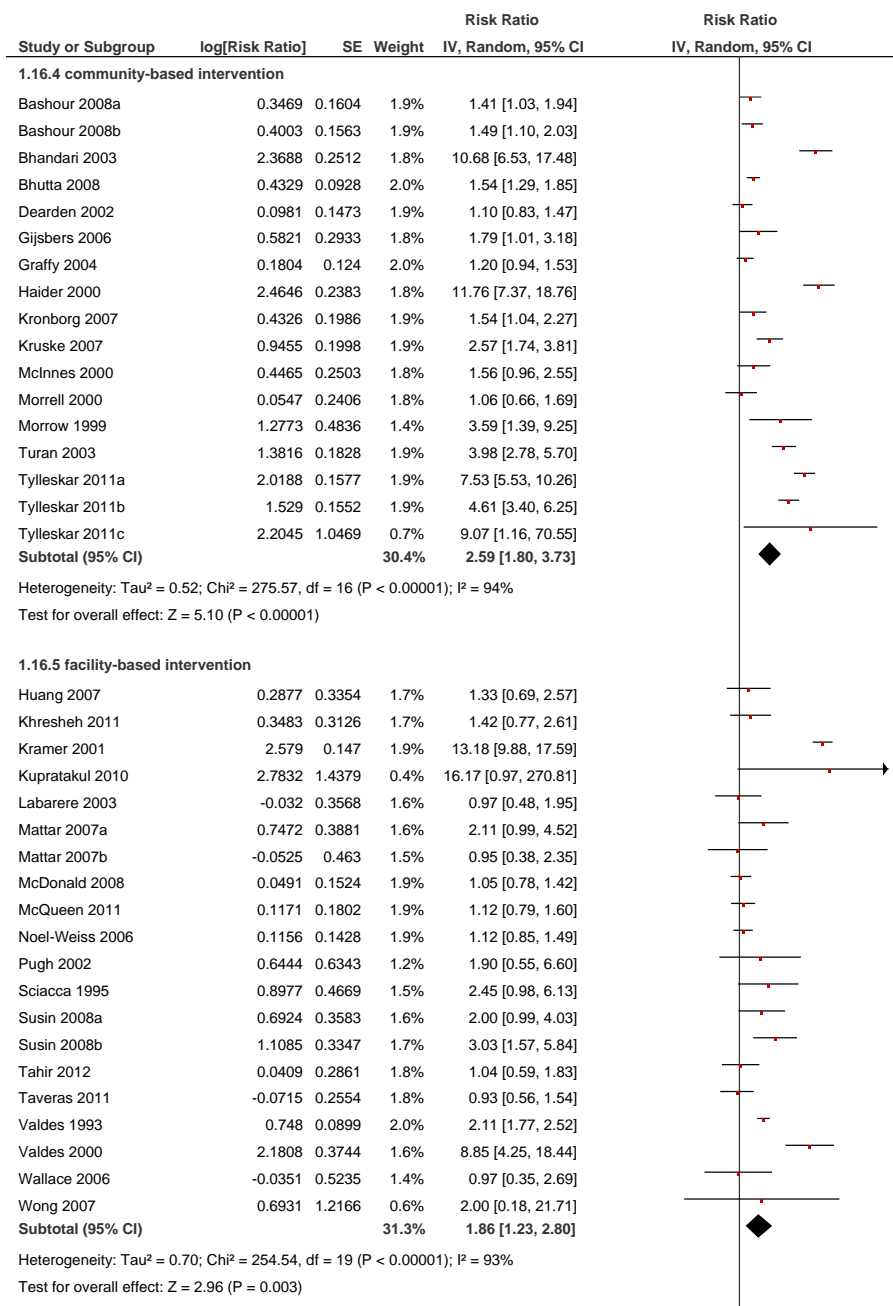


Figure 3b. Effect of breastfeeding education on the rate of exclusive breastfeeding at 1-6 months: community- vs facility-based interventions.



1.16.6 facility- and community-based intervention

Aidam 2005a	0.6587	0.1595	1.9%	1.93 [1.41, 2.64]
Aidam 2005b	0.4686	0.1751	1.9%	1.60 [1.13, 2.25]
Aksu 2011	0.619	0.3913	1.6%	1.86 [0.86, 4.00]
Alvarado 1996	4.0318	1.4167	0.4%	56.36 [3.51, 905.49]
Arifeen 2009	0.145	0.0233	2.0%	1.16 [1.10, 1.21]
Bonuck 2006	-0.4384	0.4915	1.4%	0.65 [0.25, 1.69]
Forster 2004a	0.1738	0.2779	1.8%	1.19 [0.69, 2.05]
Forster 2004b	0.1481	0.2805	1.8%	1.16 [0.67, 2.01]
Frank 1987a	-0.7051	0.8521	0.9%	0.49 [0.09, 2.62]
Frank 1987b	0.3237	0.5634	1.3%	1.38 [0.46, 4.17]
Froozani 1999	2.1128	0.4979	1.4%	8.27 [3.12, 21.95]
Jakobsen 1999	0.0891	0.3427	1.7%	1.09 [0.56, 2.14]
Kistin 1994	1.4183	0.5933	1.2%	4.13 [1.29, 13.21]
Kools 2005	-0.1583	0.1182	2.0%	0.85 [0.68, 1.08]
Muirhead 2006	1.6182	1.5435	0.4%	5.04 [0.24, 103.90]
Nommsen-Rivers 2009	0.2868	0.2839	1.8%	1.33 [0.76, 2.32]
Petrova 2009	0.2772	0.6292	1.2%	1.32 [0.38, 4.53]
Ryan 2006	-0.862	0.0379	2.0%	0.42 [0.39, 0.45]
Simonetti 2012	0.7634	0.4233	1.5%	2.15 [0.94, 4.92]
Sjolin 1979	0.1671	0.3771	1.6%	1.18 [0.56, 2.47]
Su 2007a	0.7503	0.3464	1.7%	2.12 [1.07, 4.18]
Su 2007b	0.7699	0.3439	1.7%	2.16 [1.10, 4.24]
Vitolo 2005	0.8511	0.2729	1.8%	2.34 [1.37, 4.00]
Wen 2011	0.711	0.4928	1.4%	2.04 [0.78, 5.35]
Wrenn 1997	0.0367	0.1889	1.9%	1.04 [0.72, 1.50]
Subtotal (95% CI)			38.2%	1.49 [1.10, 2.00]

Heterogeneity: $\tau^2 = 0.41$; $\text{Chi}^2 = 625.35$, $\text{df} = 24$ ($P < 0.00001$); $I^2 = 96\%$

Test for overall effect: $Z = 2.60$ ($P = 0.009$)

Total (95% CI) **100.0%** **1.90 [1.54, 2.34]**

Heterogeneity: $\tau^2 = 0.57$; $\text{Chi}^2 = 1629.52$, $\text{df} = 61$ ($P < 0.00001$); $I^2 = 96\%$

Test for overall effect: $Z = 5.97$ ($P < 0.00001$)

Test for subgroup differences: $\text{Chi}^2 = 5.29$, $\text{df} = 2$ ($P = 0.07$), $I^2 = 62.2\%$

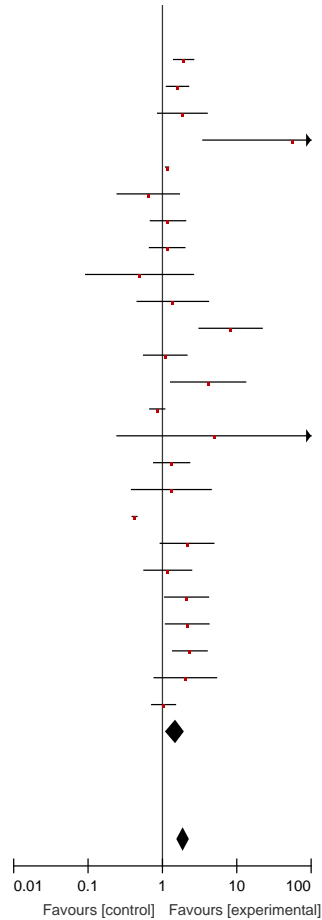
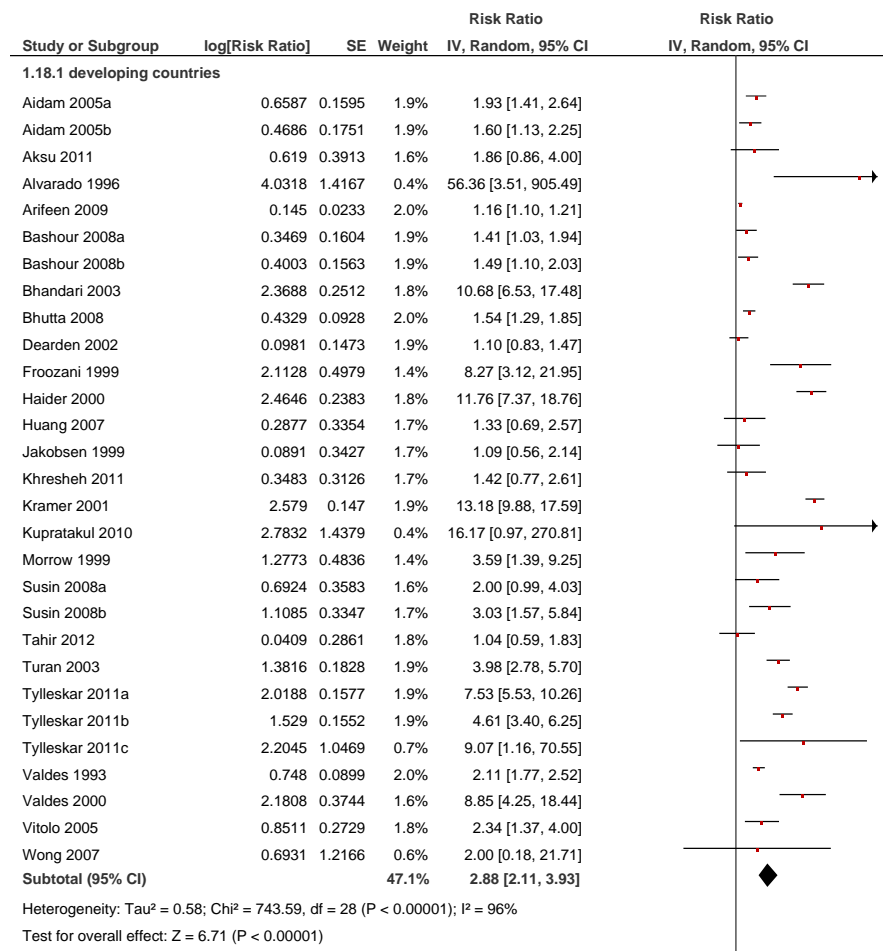


Figure 3c. Effect of breastfeeding education on the rate of exclusive breastfeeding at 1-6 months: developing vs developed countries.



1.18.2 developed countries

Study	log[OR]	SE	Weight	IV, Random, 95% CI
Bonuck 2006	-0.4384	0.4915	1.4%	0.65 [0.25, 1.69]
Forster 2004a	0.1738	0.2779	1.8%	1.19 [0.69, 2.05]
Forster 2004b	0.1481	0.2805	1.8%	1.16 [0.67, 2.01]
Frank 1987a	-0.7051	0.8521	0.9%	0.49 [0.09, 2.62]
Frank 1987b	0.3237	0.5634	1.3%	1.38 [0.46, 4.17]
Gijsbers 2006	0.5821	0.2933	1.8%	1.79 [1.01, 3.18]
Graffy 2004	0.1804	0.124	2.0%	1.20 [0.94, 1.53]
Kistin 1994	1.4183	0.5933	1.2%	4.13 [1.29, 13.21]
Kools 2005	-0.1583	0.1182	2.0%	0.85 [0.68, 1.08]
Kronborg 2007	0.4326	0.1986	1.9%	1.54 [1.04, 2.27]
Kruske 2007	0.9455	0.1998	1.9%	2.57 [1.74, 3.81]
Labarere 2003	-0.032	0.3568	1.6%	0.97 [0.48, 1.95]
Mattar 2007a	0.7472	0.3881	1.6%	2.11 [0.99, 4.52]
Mattar 2007b	-0.0525	0.463	1.5%	0.95 [0.38, 2.35]
McDonald 2008	0.0491	0.1524	1.9%	1.05 [0.78, 1.42]
McInnes 2000	0.4465	0.2503	1.8%	1.56 [0.96, 2.55]
McQueen 2011	0.1171	0.1802	1.9%	1.12 [0.79, 1.60]
Morrell 2000	0.0547	0.2406	1.8%	1.06 [0.66, 1.69]
Muirhead 2006	1.6182	1.5435	0.4%	5.04 [0.24, 103.90]
Noel-Weiss 2006	0.1156	0.1428	1.9%	1.12 [0.85, 1.49]
Nommensen-Rivers 2009	0.2868	0.2839	1.8%	1.33 [0.76, 2.32]
Petrova 2009	0.2772	0.6292	1.2%	1.32 [0.38, 4.53]
Pugh 2002	0.6444	0.6343	1.2%	1.90 [0.55, 6.60]
Ryan 2006	-0.862	0.0379	2.0%	0.42 [0.39, 0.45]
Sciacca 1995	0.8977	0.4669	1.5%	2.45 [0.98, 6.13]
Simonetti 2012	0.7634	0.4233	1.5%	2.15 [0.94, 4.92]
Sjolin 1979	0.1671	0.3771	1.6%	1.18 [0.56, 2.47]
Su 2007a	0.7503	0.3464	1.7%	2.12 [1.07, 4.18]
Su 2007b	0.7699	0.3439	1.7%	2.16 [1.10, 4.24]
Taveras 2011	-0.0715	0.2554	1.8%	0.93 [0.56, 1.54]
Wallace 2006	-0.0351	0.5235	1.4%	0.97 [0.35, 2.69]
Wen 2011	0.711	0.4928	1.4%	2.04 [0.78, 5.35]
Wrenn 1997	0.0367	0.1889	1.9%	1.04 [0.72, 1.50]
Subtotal (95% CI)			52.9%	1.31 [1.00, 1.70]

Heterogeneity: $\tau^2 = 0.45$; $\chi^2 = 387.42$, $df = 32$ ($P < 0.00001$); $I^2 = 92\%$
 Test for overall effect: $Z = 2.00$ ($P = 0.05$)

Total (95% CI) 100.0% 1.90 [1.54, 2.34]

Heterogeneity: $\tau^2 = 0.57$; $\chi^2 = 1629.52$, $df = 61$ ($P < 0.00001$); $I^2 = 96\%$
 Test for overall effect: $Z = 5.97$ ($P < 0.00001$)

Test for subgroup differences: $\chi^2 = 14.69$, $df = 1$ ($P = 0.0001$), $I^2 = 93.2\%$

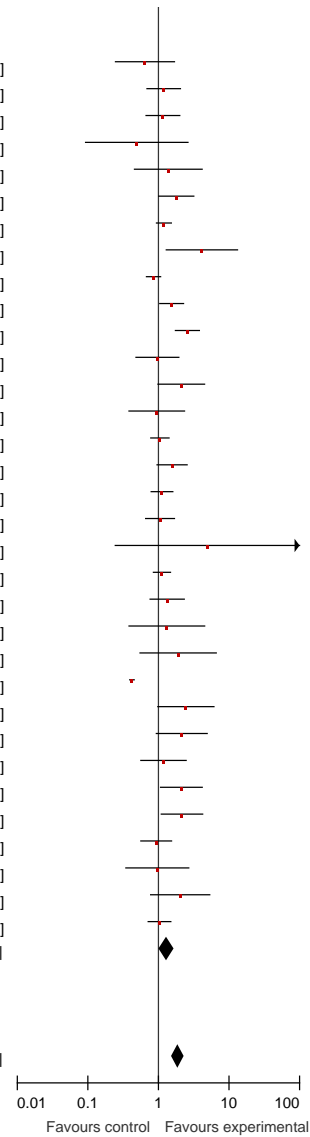


Figure 3d. Effect of breastfeeding education on the rate of exclusive breastfeeding at 6-12 months.

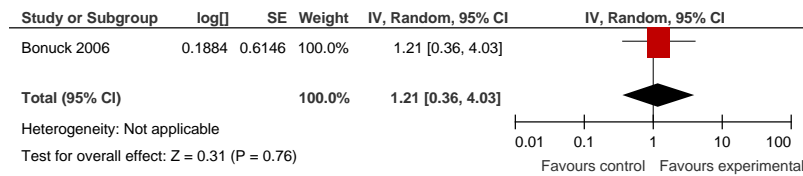


Figure 4a. Effect of breastfeeding education on the rate of predominant breastfeeding at 0-1 month: individual vs group counseling.

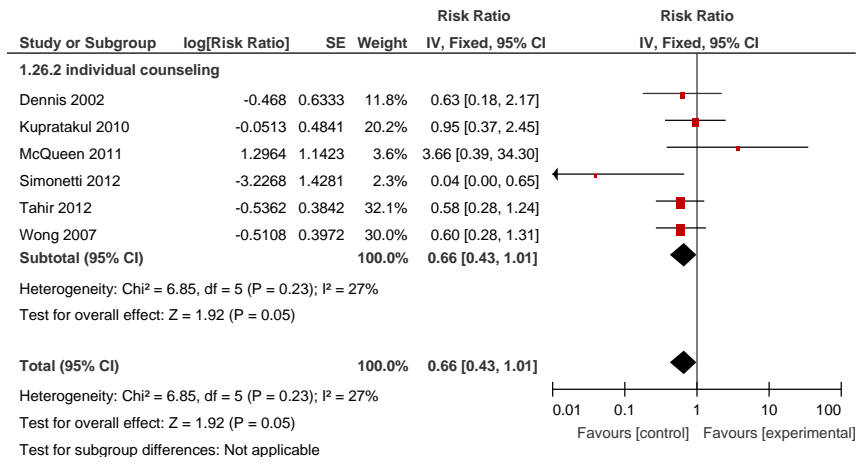


Figure 4b. Effect of breastfeeding education on the rate of predominant breastfeeding at 0-1 month: community- vs facility-based interventions.

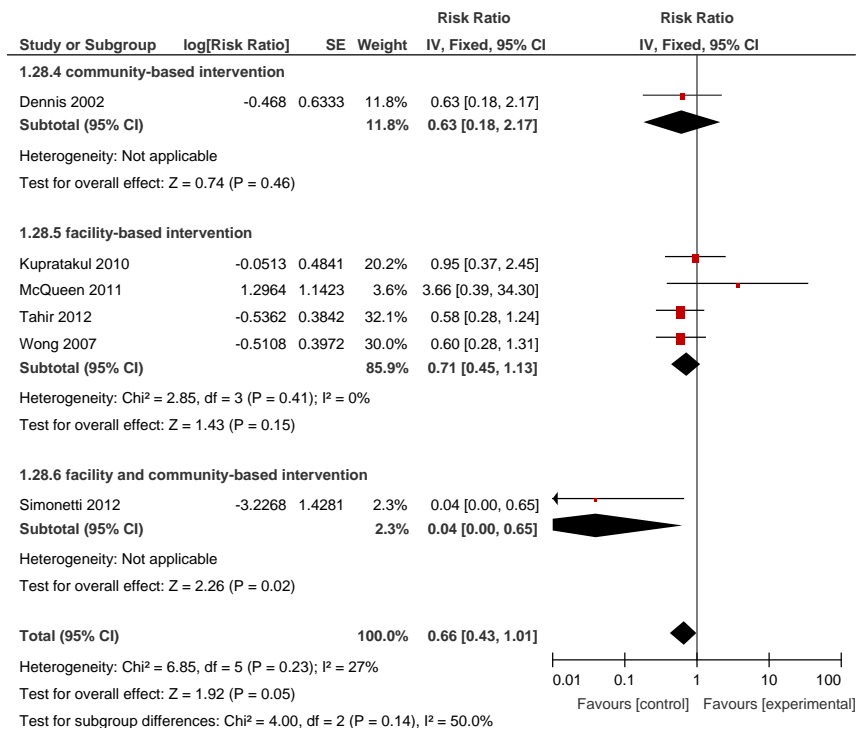


Figure 4c. Effect of breastfeeding education on the rate of predominant breastfeeding at 0-1 month: developing vs developed countries.

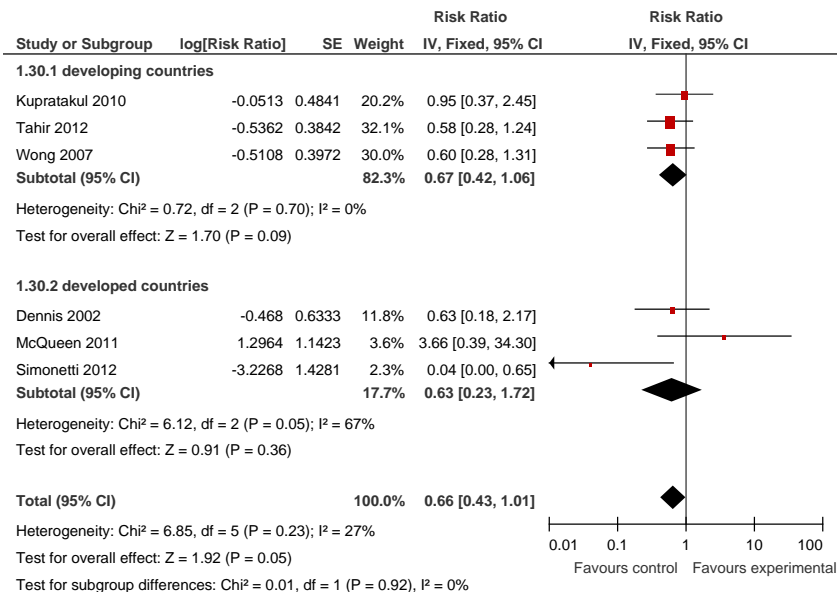


Figure 5a. Effect of breastfeeding education on the rate of predominant breastfeeding at 1-6 months: individual vs group counseling.

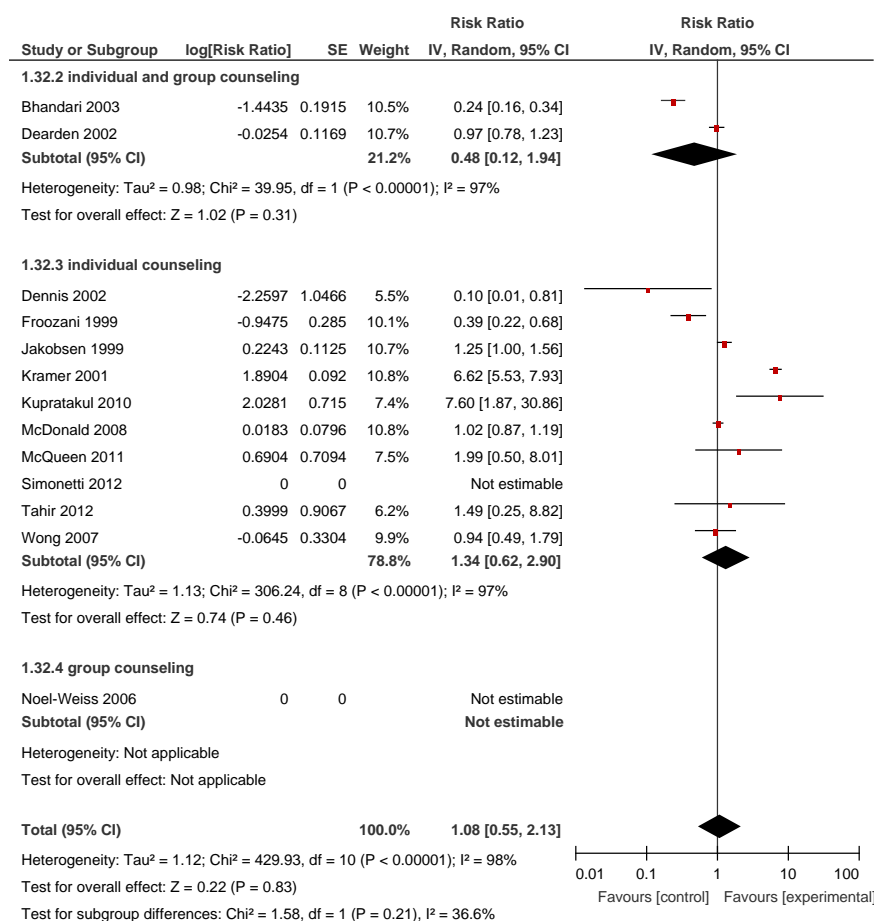


Figure 5b. Effect of breastfeeding education on the rate of predominant breastfeeding at 1-6 months: community- vs facility-based interventions.

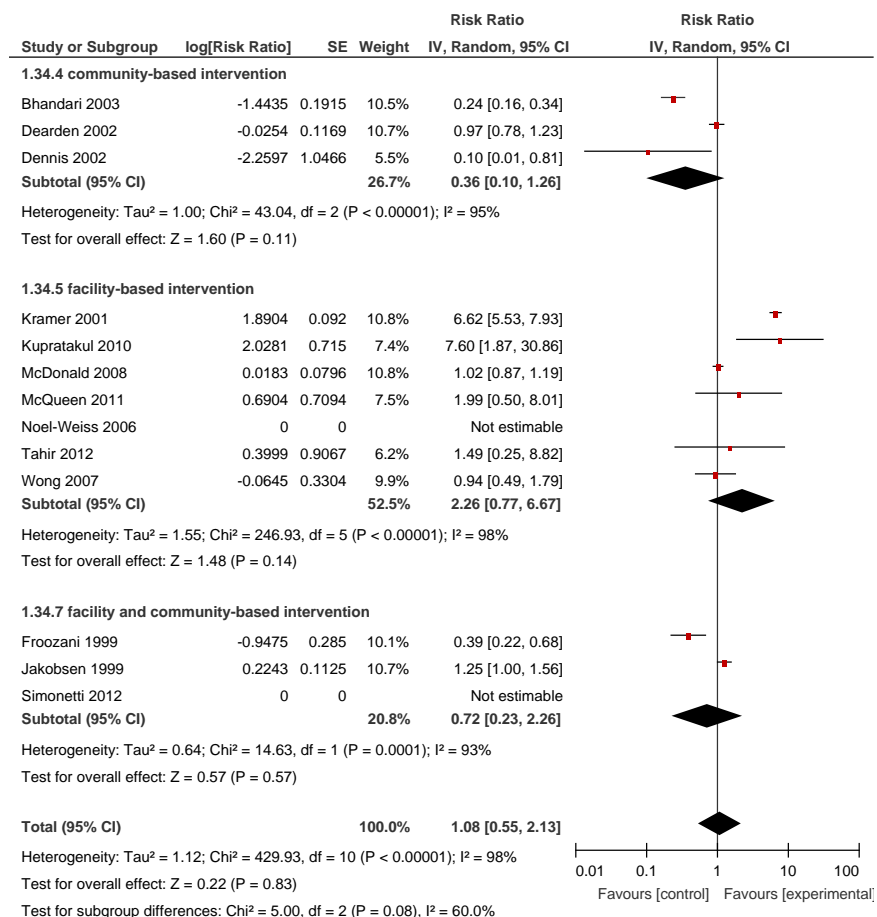


Figure 5c. Effect of breastfeeding education on the rate of predominant breastfeeding at 1-6 months: developing vs developed countries.

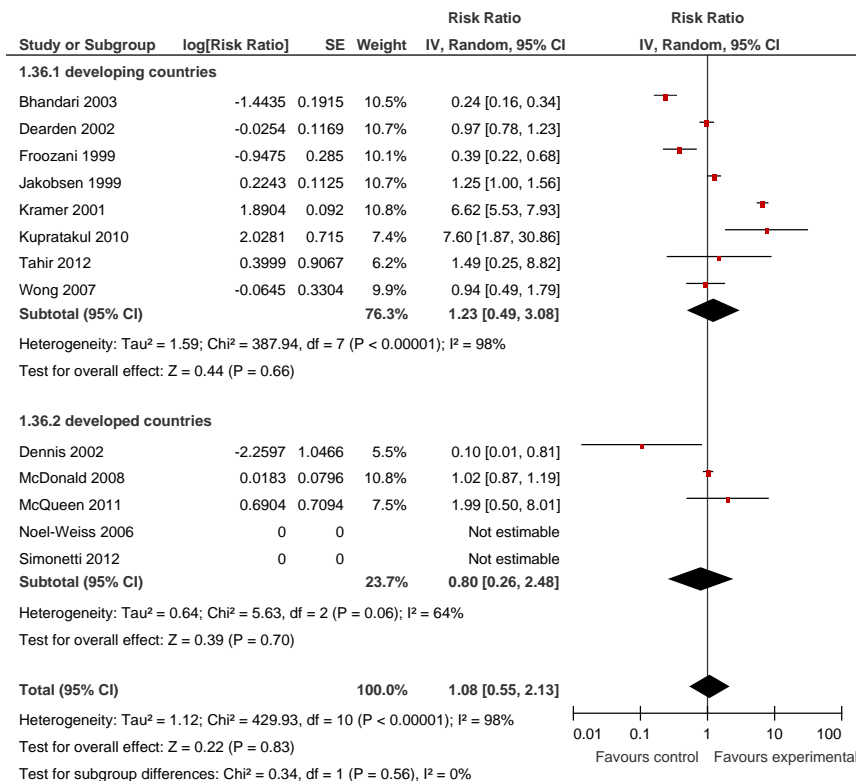


Figure 6a. Effect of breastfeeding education on the rate of partial breastfeeding at day 1: individual vs group counseling.

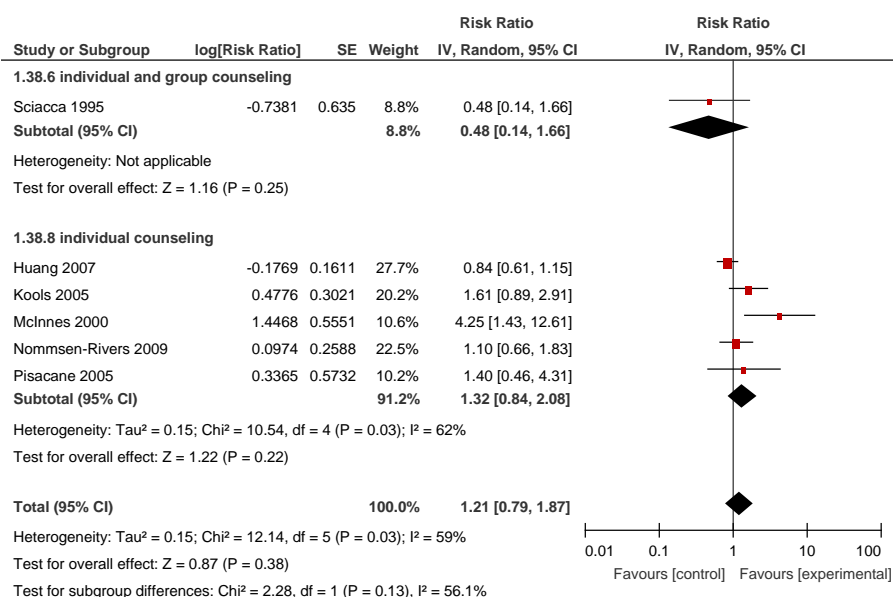


Figure 6b. Effect of breastfeeding education on the rate of partial breastfeeding at day 1: community- vs facility-based interventions.

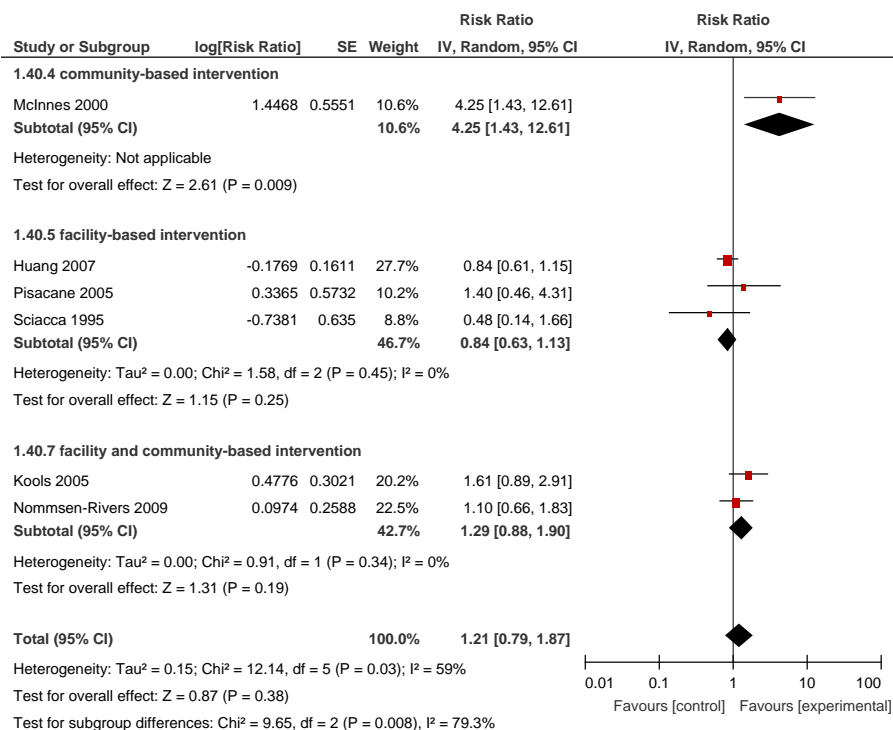


Figure 6c. Effect of breastfeeding education on the rate of partial breastfeeding at day 1: developing vs developed countries.

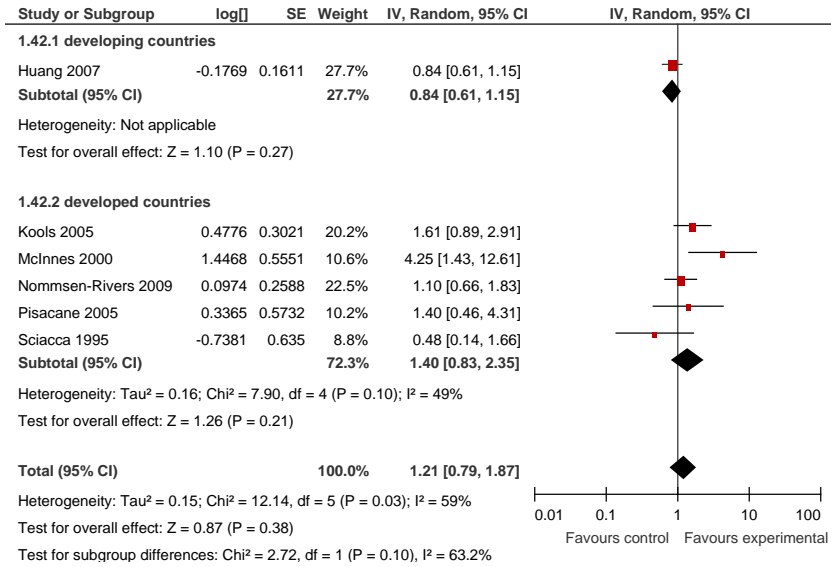


Figure 7a. Effect of breastfeeding education on the rate of partial breastfeeding at 0-1 month: individual vs group counseling.

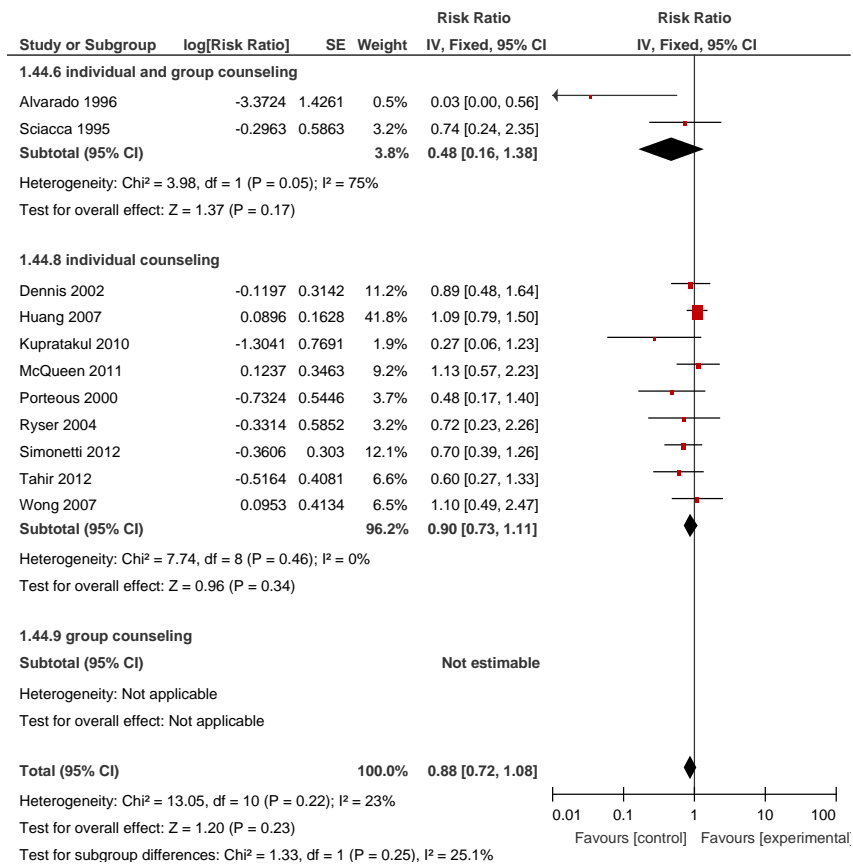


Figure 7b. Effect of breastfeeding education on the rate of partial breastfeeding at 0-1 month: community- vs facility-based interventions.

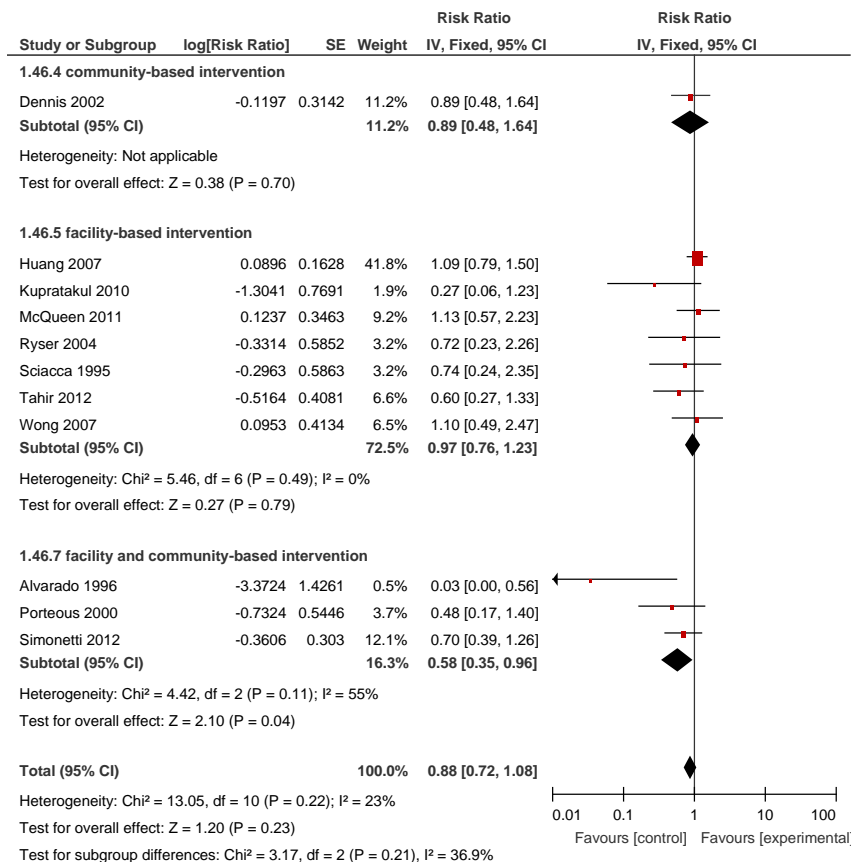


Figure 7c. Effect of breastfeeding education on the rate of partial breastfeeding at 0-1 month: developing vs developed countries.

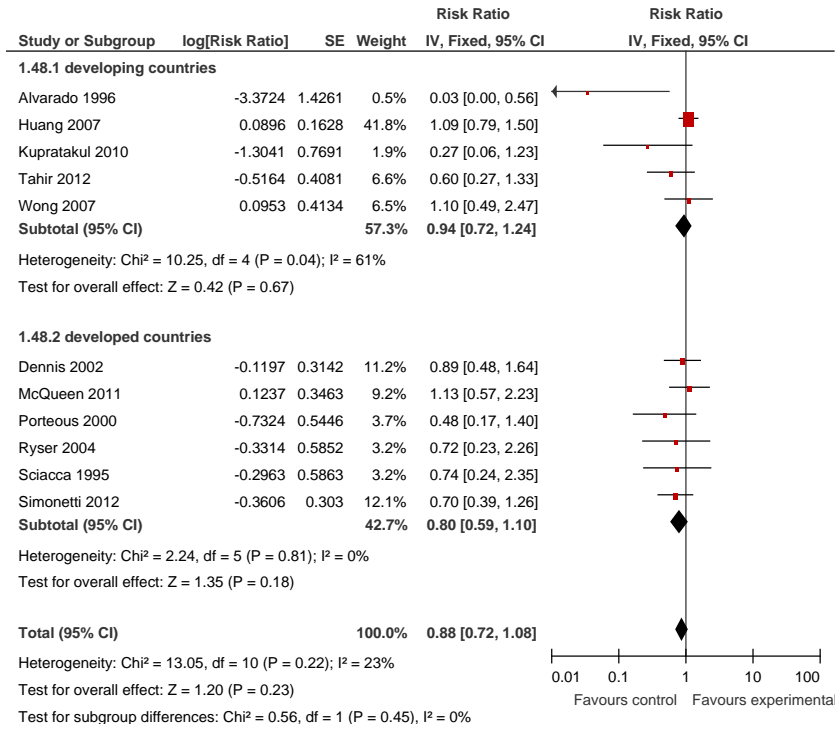


Figure 8a. Effect of breastfeeding education on the rate of partial breastfeeding at 1-6 months: individual vs group counseling.

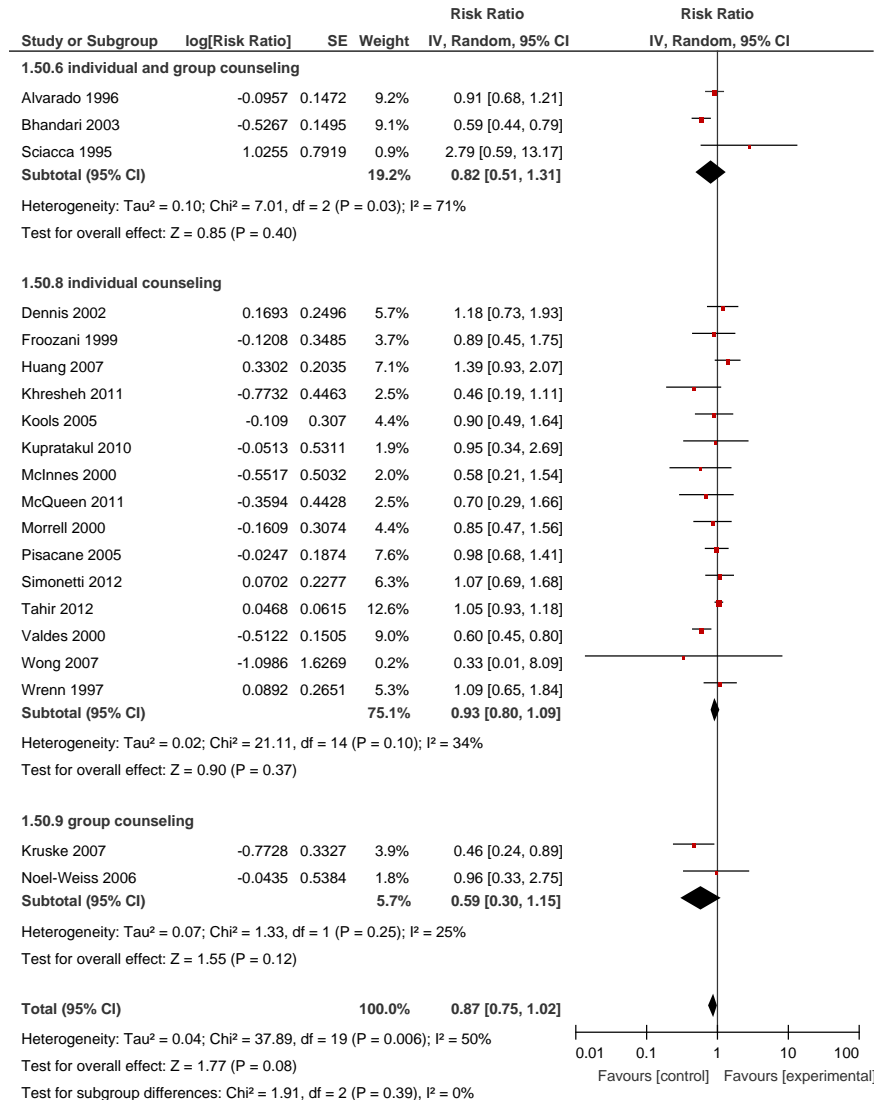


Figure 8b. Effect of breastfeeding education on the rate of partial breastfeeding at 1-6 months: community- vs facility-based interventions.

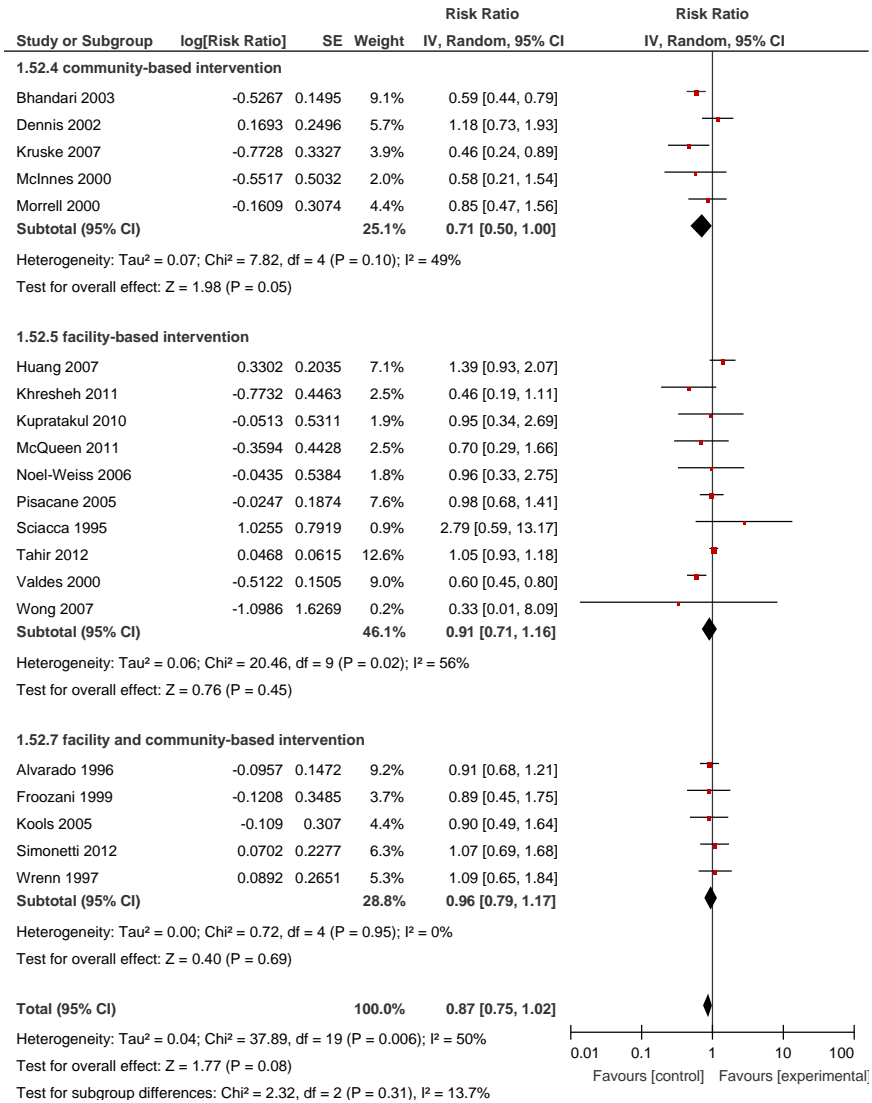


Figure 8c. Effect of breastfeeding education on the rate of partial breastfeeding at 1-6 months: developing vs developed countries.

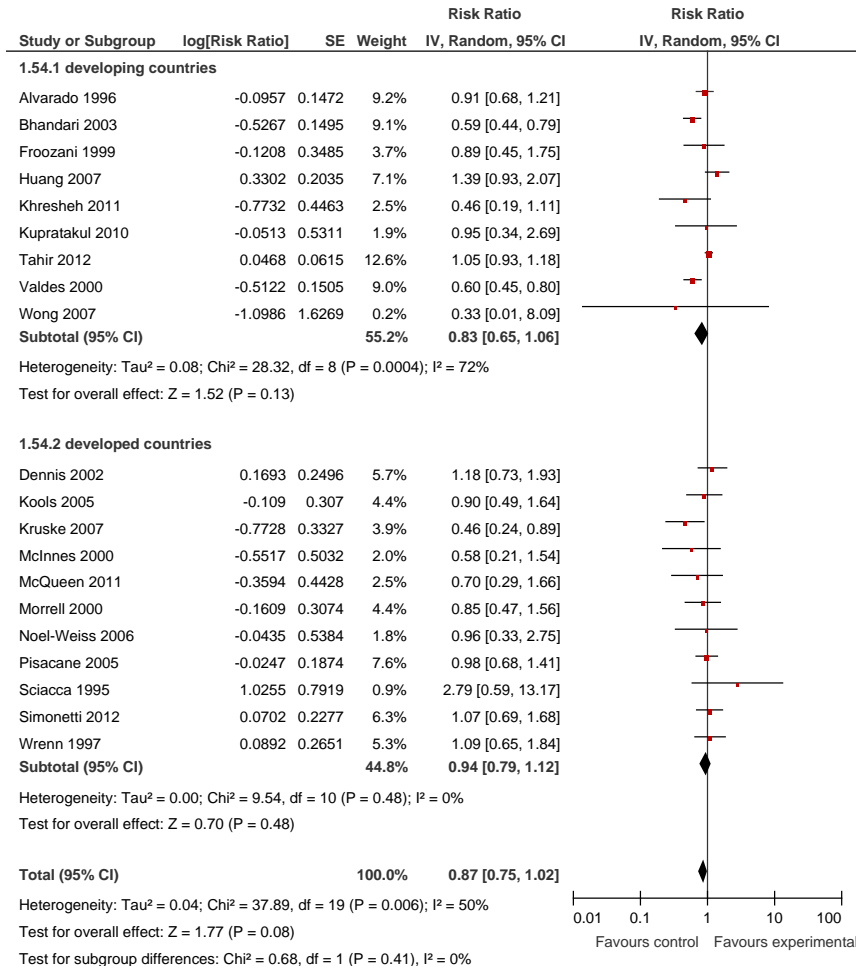


Figure 8d. Effect of breastfeeding education on the rate of partial breastfeeding at 6-12 months.

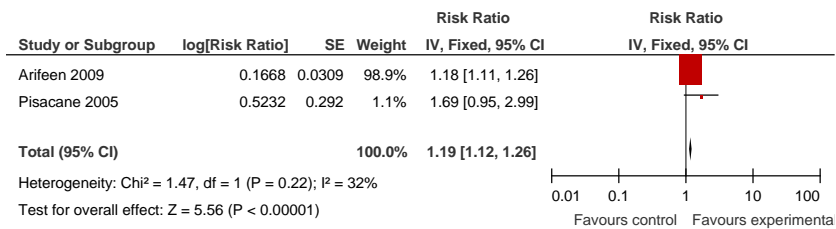


Figure 9a. Effect of breastfeeding education on the rate of no breastfeeding at day 1: individual vs group counseling.

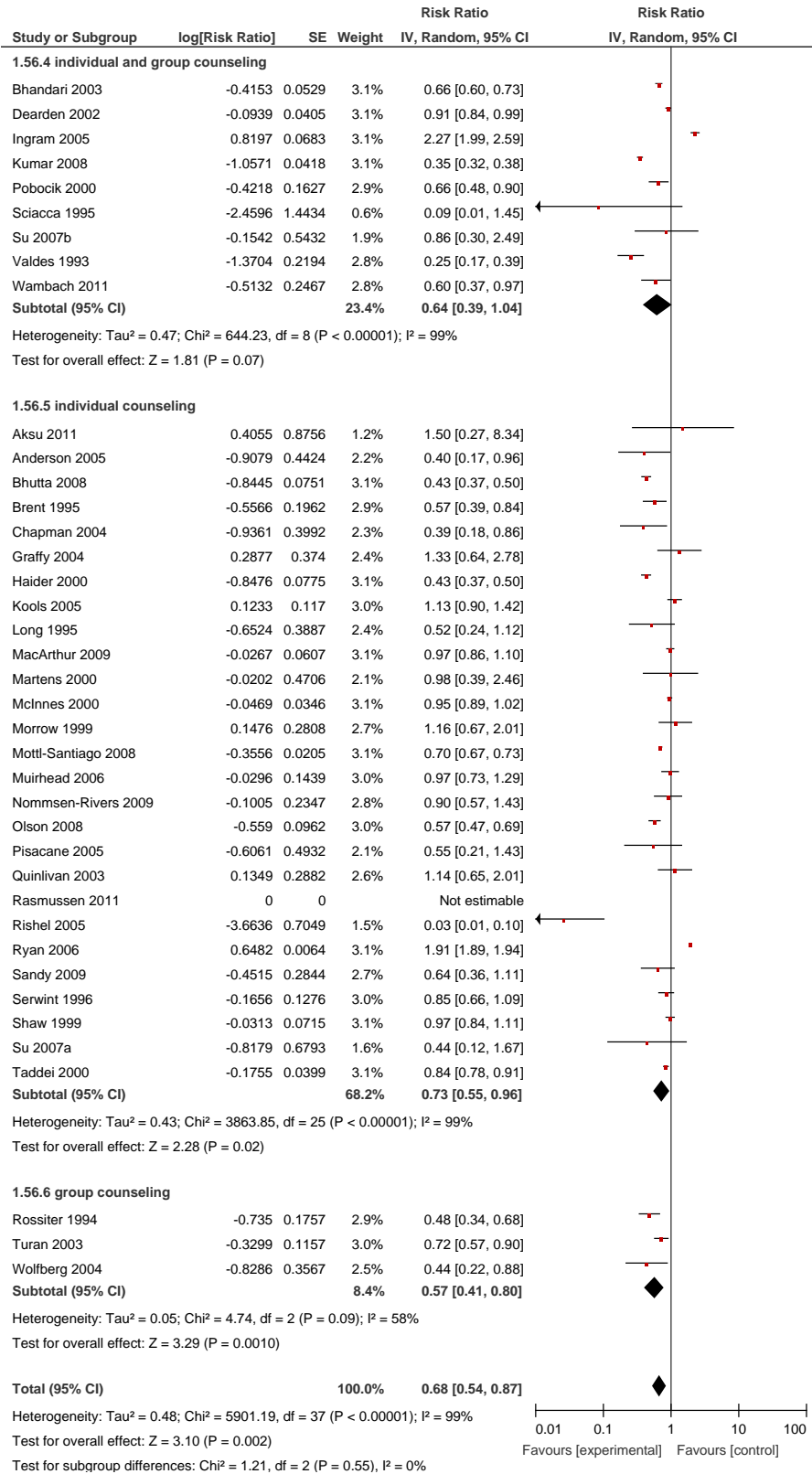


Figure 9b. Effect of breastfeeding education on the rate of no breastfeeding at day 1: community- vs facility-based interventions.

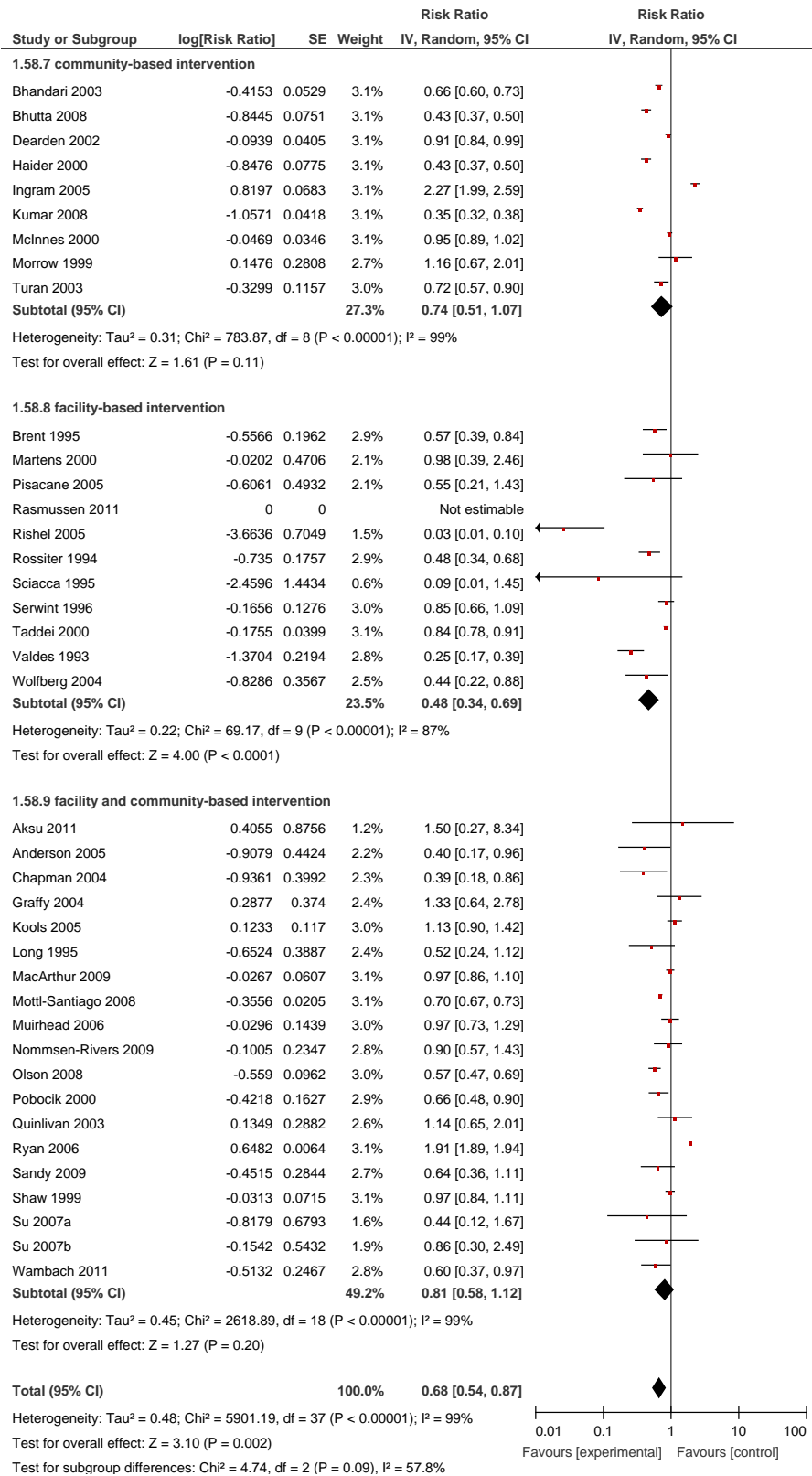


Figure 9c. Effect of breastfeeding education on the rate of no breastfeeding at day 1: developing vs developed countries.

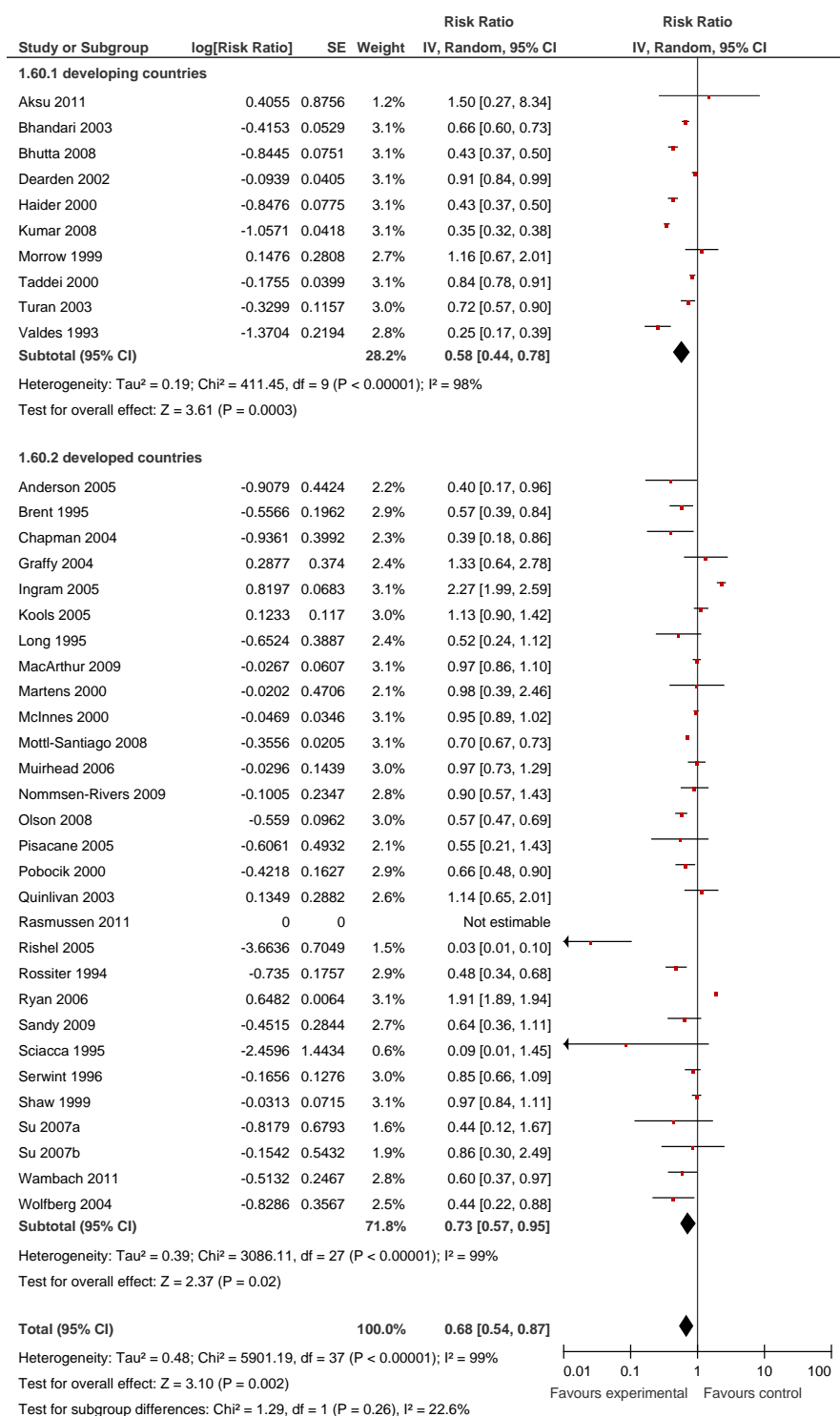


Figure 10a. Effect of breastfeeding education on the rate of no breastfeeding at 0-1 month: individual vs group counseling.

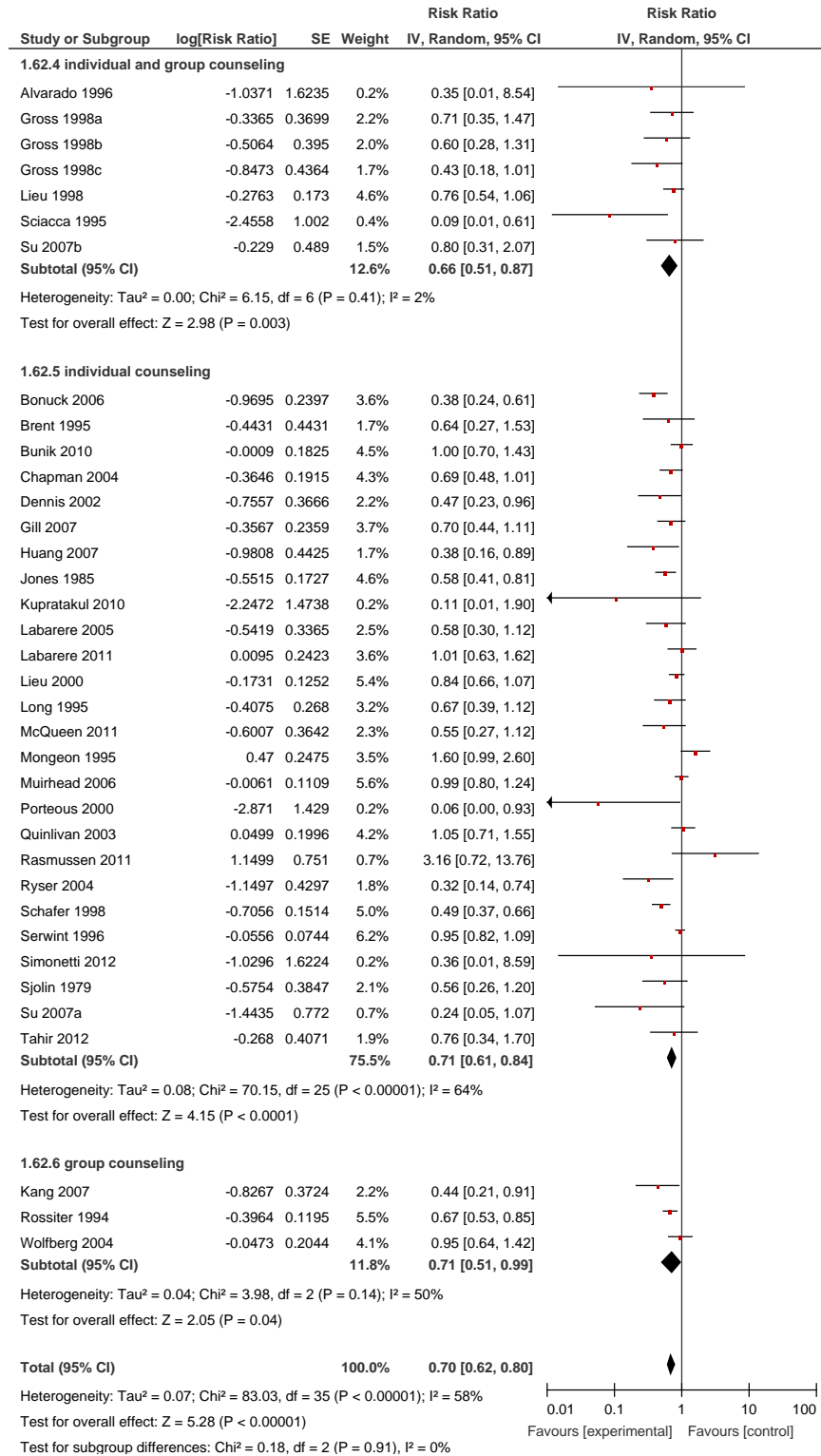


Figure 10b. Effect of breastfeeding education on the rate of no breastfeeding at 0-1 month: community- vs facility-based intervention.

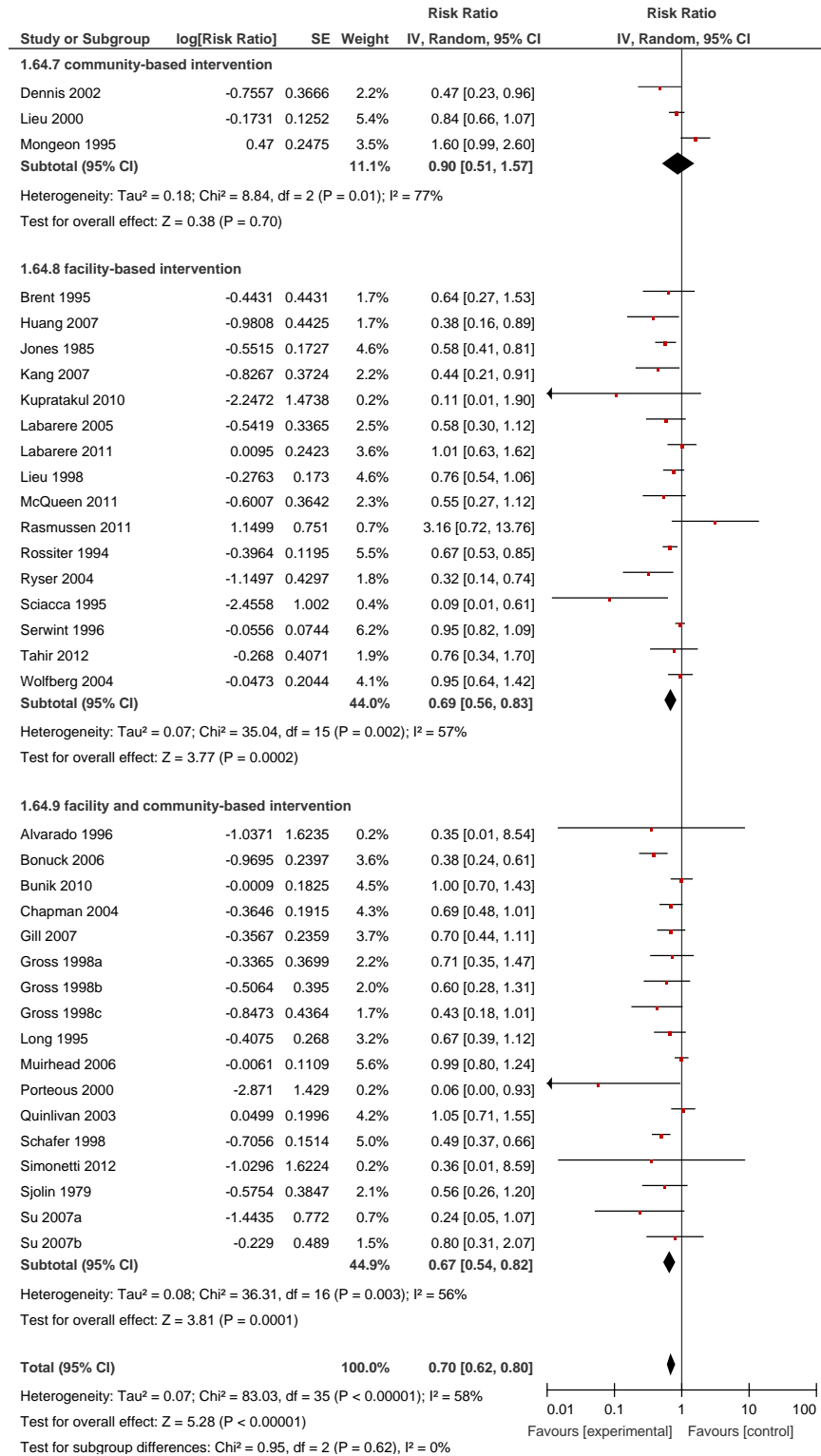


Figure 10c. Effect of breastfeeding education on the rate of no breastfeeding at 0-1 month: developing vs developed countries.

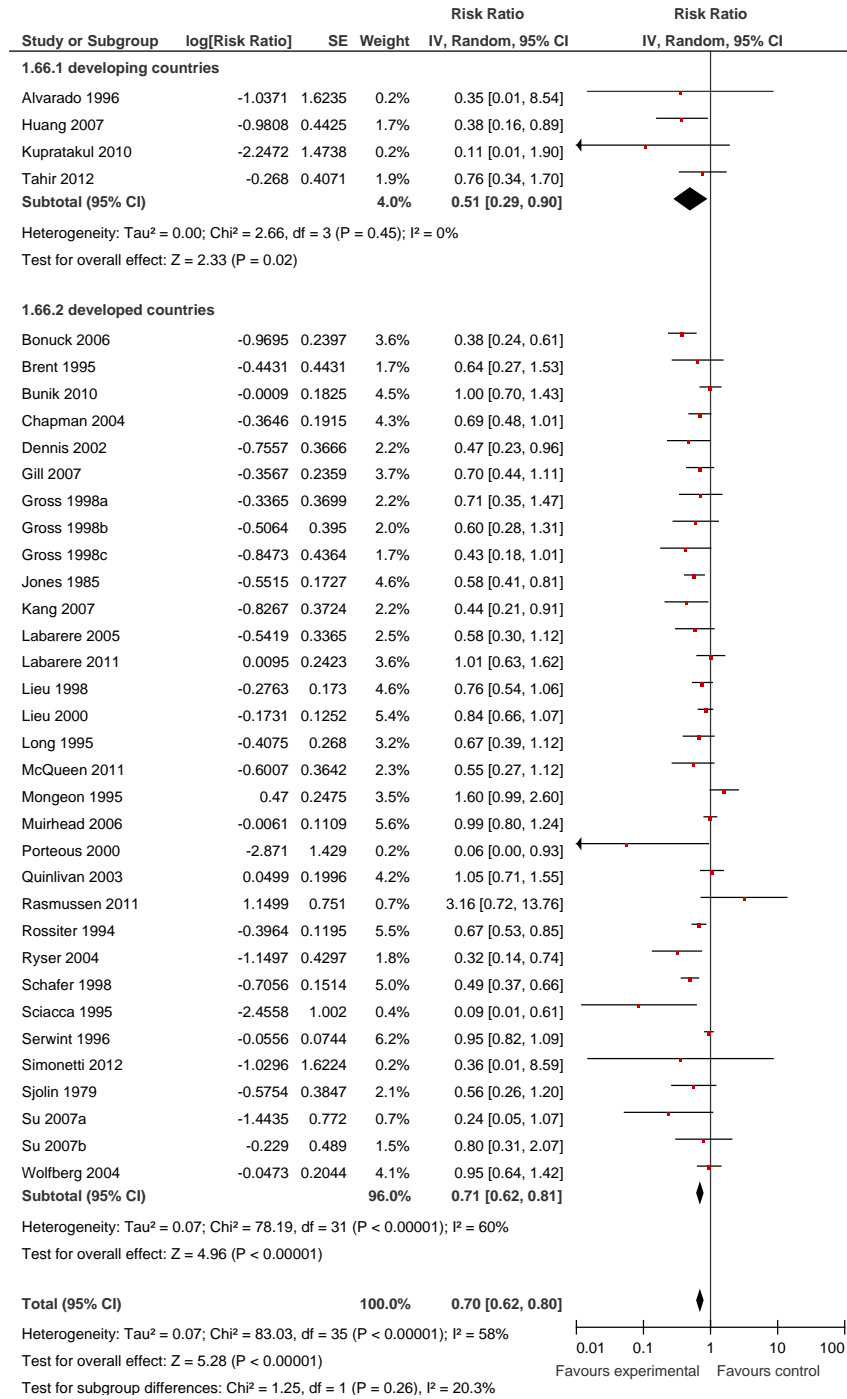
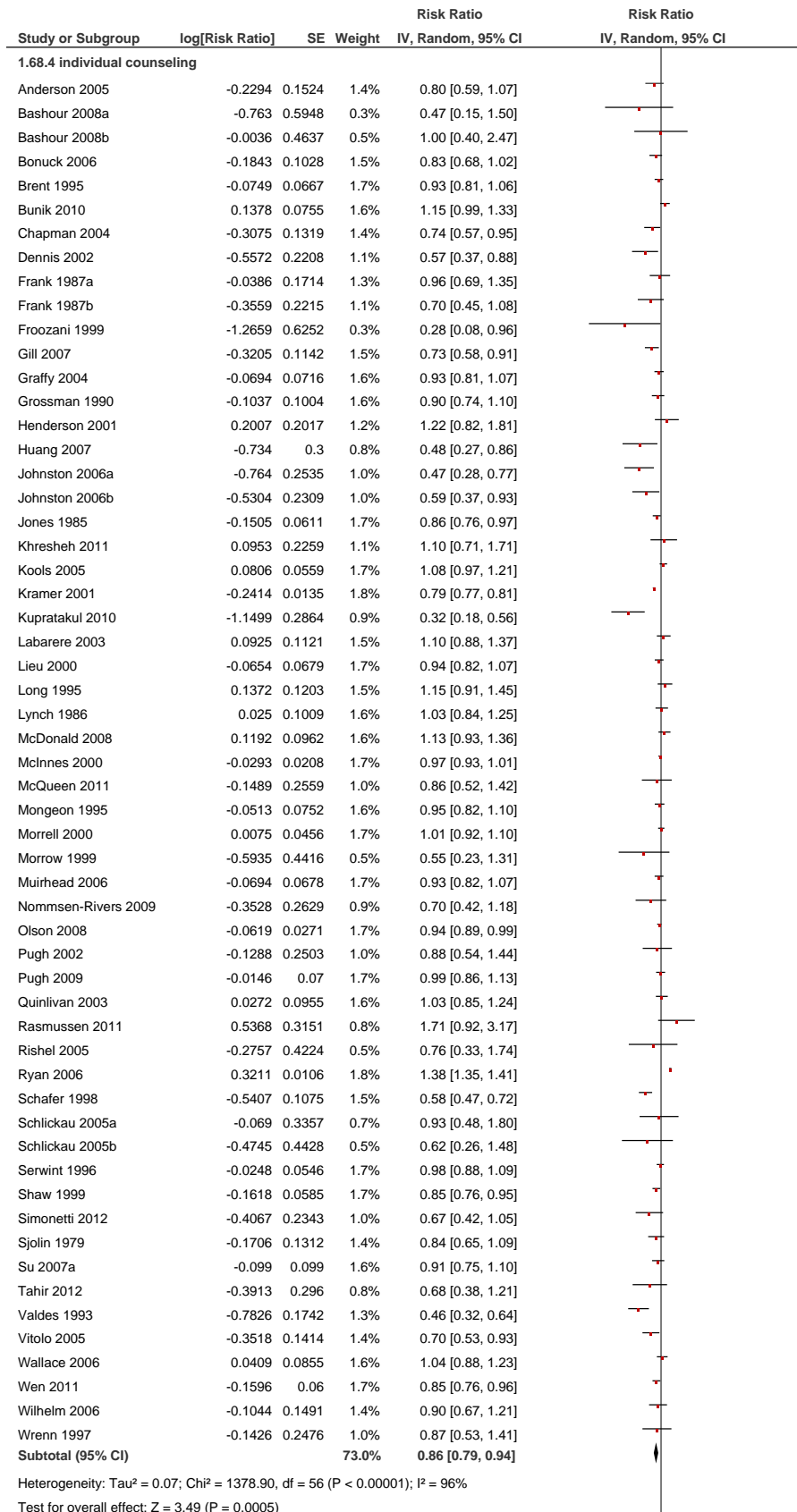


Figure 11a. Effect of breastfeeding education on the rate of no breastfeeding at 1-6 months: individual vs group counseling.



1.68.5 group counseling

Forster 2004a	-0.008	0.0894	1.6%	0.99 [0.83, 1.18]
Forster 2004b	0.0907	0.0857	1.6%	1.09 [0.93, 1.30]
Garcia-Montrone 1996	-0.47	0.3536	0.7%	0.63 [0.31, 1.25]
Hill 1987	-0.1285	0.1832	1.2%	0.88 [0.61, 1.26]
Kang 2007	-0.6931	0.2415	1.0%	0.50 [0.31, 0.80]
Kruske 2007	-1.3519	0.3066	0.8%	0.26 [0.14, 0.47]
Noel-Weiss 2006	-0.4002	0.4465	0.5%	0.67 [0.28, 1.61]
Reifsnider 1997	-0.2758	0.1796	1.2%	0.76 [0.53, 1.08]
Rossiter 1994	-0.1207	0.0778	1.6%	0.89 [0.76, 1.03]
Turan 2003	-0.7428	0.3375	0.7%	0.48 [0.25, 0.92]
Wolfberg 2004	-0.2098	0.1676	1.3%	0.81 [0.58, 1.13]
Subtotal (95% CI)			12.2%	0.76 [0.63, 0.91]

Heterogeneity: $\tau^2 = 0.05$; $\chi^2 = 35.21$, $df = 10$ ($P = 0.0001$); $I^2 = 72\%$
 Test for overall effect: $Z = 2.96$ ($P = 0.003$)

1.68.6 individual and group counseling

Alvarado 1996	-3.1564	1.0044	0.1%	0.04 [0.01, 0.30]
Bhandari 2003	1.2273	0.7877	0.2%	3.41 [0.73, 15.98]
Gross 1998a	-0.6217	0.1895	1.2%	0.54 [0.37, 0.78]
Gross 1998b	-0.6993	0.2189	1.1%	0.50 [0.32, 0.76]
Gross 1998c	-0.4798	0.1563	1.3%	0.62 [0.46, 0.84]
Ingram 2005	0.4406	0.0404	1.7%	1.55 [1.44, 1.68]
Lovera 2010	-0.3201	0.1534	1.3%	0.73 [0.54, 0.98]
Pobocik 2000	-0.2013	0.0656	1.7%	0.82 [0.72, 0.93]
Redman 1995	0.0155	0.1	1.6%	1.02 [0.83, 1.24]
Rosen 2008	-0.4797	0.163	1.3%	0.62 [0.45, 0.85]
Sciacca 1995	-0.6793	0.2693	0.9%	0.51 [0.30, 0.86]
Su 2007b	-0.1381	0.101	1.6%	0.87 [0.71, 1.06]
Valdes 2000	-1.4087	0.3058	0.8%	0.24 [0.13, 0.45]
Subtotal (95% CI)			14.8%	0.68 [0.51, 0.91]

Heterogeneity: $\tau^2 = 0.22$; $\chi^2 = 205.09$, $df = 12$ ($P < 0.00001$); $I^2 = 94\%$
 Test for overall effect: $Z = 2.59$ ($P = 0.010$)

Total (95% CI) 100.0% 0.82 [0.77, 0.89]

Heterogeneity: $\tau^2 = 0.08$; $\chi^2 = 1635.68$, $df = 80$ ($P < 0.00001$); $I^2 = 95\%$
 Test for overall effect: $Z = 5.26$ ($P < 0.00001$)

Test for subgroup differences: $\chi^2 = 3.53$, $df = 2$ ($P = 0.17$), $I^2 = 43.3\%$

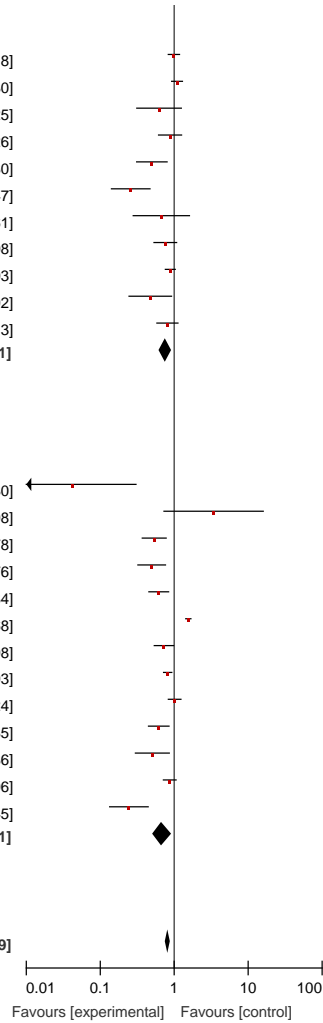
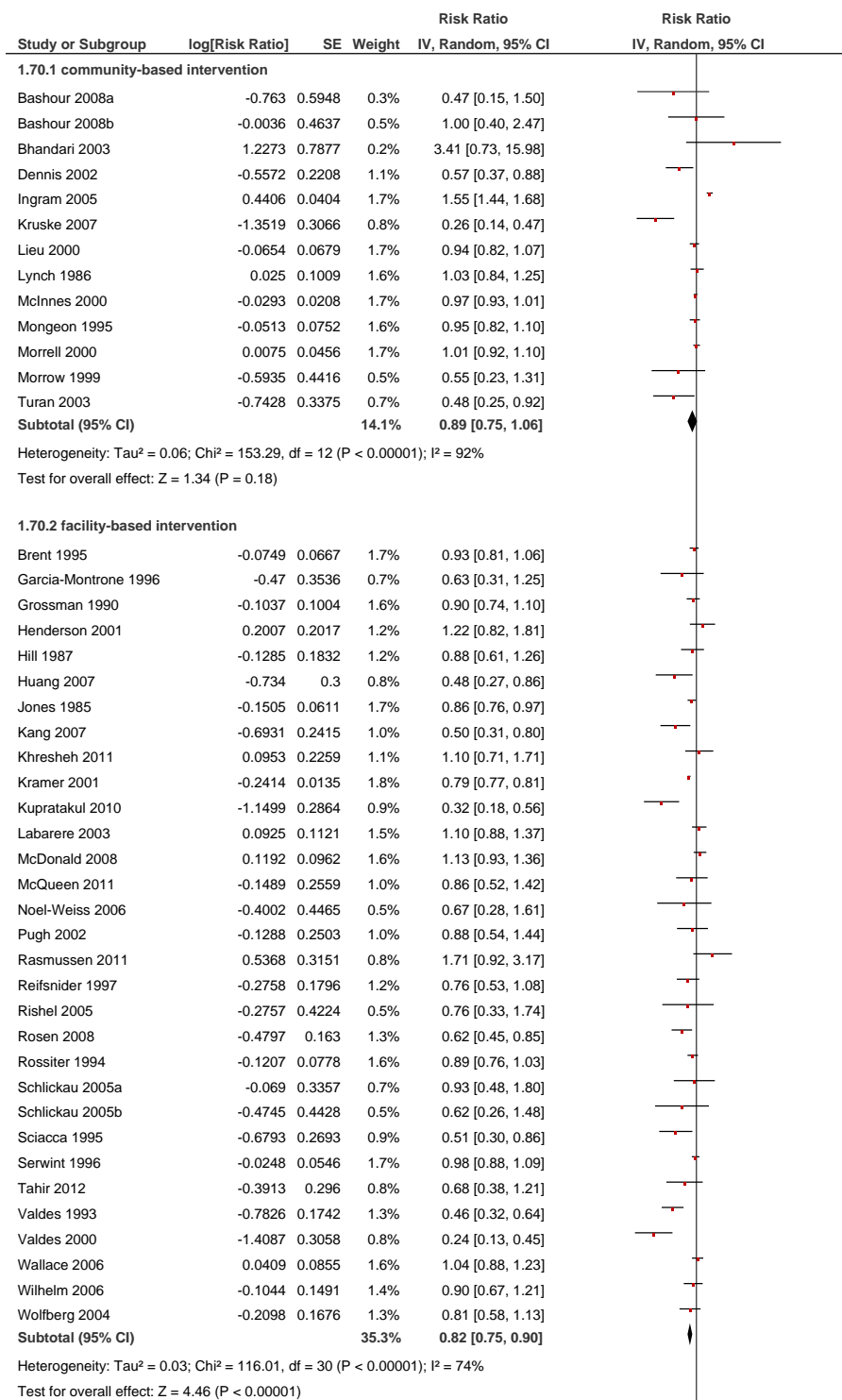


Figure 11b. Effect of breastfeeding education on the rate of no breastfeeding at 1-6 months: community- vs facility-based intervention.



1.70.3 facility and community-based intervention

Alvarado 1996	-3.1564	1.0044	0.1%	0.04 [0.01, 0.30]
Anderson 2005	-0.2294	0.1524	1.4%	0.80 [0.59, 1.07]
Bonuck 2006	-0.1843	0.1028	1.5%	0.83 [0.68, 1.02]
Bunik 2010	0.1378	0.0755	1.6%	1.15 [0.99, 1.33]
Chapman 2004	-0.3075	0.1319	1.4%	0.74 [0.57, 0.95]
Forster 2004a	-0.008	0.0894	1.6%	0.99 [0.83, 1.18]
Forster 2004b	0.0907	0.0857	1.6%	1.09 [0.93, 1.30]
Frank 1987a	-0.0386	0.1714	1.3%	0.96 [0.69, 1.35]
Frank 1987b	-0.3559	0.2215	1.1%	0.70 [0.45, 1.08]
Froozani 1999	-1.2659	0.6252	0.3%	0.28 [0.08, 0.96]
Gill 2007	-0.3205	0.1142	1.5%	0.73 [0.58, 0.91]
Graffy 2004	-0.0694	0.0716	1.6%	0.93 [0.81, 1.07]
Gross 1998a	-0.6217	0.1895	1.2%	0.54 [0.37, 0.78]
Gross 1998b	-0.6993	0.2189	1.1%	0.50 [0.32, 0.76]
Gross 1998c	-0.4798	0.1563	1.3%	0.62 [0.46, 0.84]
Johnston 2006a	-0.764	0.2535	1.0%	0.47 [0.28, 0.77]
Johnston 2006b	-0.5304	0.2309	1.0%	0.59 [0.37, 0.93]
Kools 2005	0.0806	0.0559	1.7%	1.08 [0.97, 1.21]
Long 1995	0.1372	0.1203	1.5%	1.15 [0.91, 1.45]
Lovera 2010	-0.3201	0.1534	1.3%	0.73 [0.54, 0.98]
Muirhead 2006	-0.0694	0.0678	1.7%	0.93 [0.82, 1.07]
Nommsen-Rivers 2009	-0.3528	0.2629	0.9%	0.70 [0.42, 1.18]
Olson 2008	-0.0619	0.0271	1.7%	0.94 [0.89, 0.99]
Pobocik 2000	-0.2013	0.0656	1.7%	0.82 [0.72, 0.93]
Pugh 2009	-0.0146	0.07	1.7%	0.99 [0.86, 1.13]
Quinlivan 2003	0.0272	0.0955	1.6%	1.03 [0.85, 1.24]
Redman 1995	0.0155	0.1	1.6%	1.02 [0.83, 1.24]
Ryan 2006	0.3211	0.0106	1.8%	1.38 [1.35, 1.41]
Schafer 1998	-0.5407	0.1075	1.5%	0.58 [0.47, 0.72]
Shaw 1999	-0.1618	0.0585	1.7%	0.85 [0.76, 0.95]
Simonetti 2012	-0.4067	0.2343	1.0%	0.67 [0.42, 1.05]
Sjolin 1979	-0.1706	0.1312	1.4%	0.84 [0.65, 1.09]
Su 2007a	-0.099	0.099	1.6%	0.91 [0.75, 1.10]
Su 2007b	-0.1381	0.101	1.6%	0.87 [0.71, 1.06]
Vitolo 2005	-0.3518	0.1414	1.4%	0.70 [0.53, 0.93]
Wen 2011	-0.1596	0.06	1.7%	0.85 [0.76, 0.96]
Wrenn 1997	-0.1426	0.2476	1.0%	0.87 [0.53, 1.41]
Subtotal (95% CI)			50.6%	0.83 [0.75, 0.92]

Heterogeneity: $\tau^2 = 0.08$; $\chi^2 = 662.79$, $df = 36$ ($P < 0.00001$); $I^2 = 95\%$

Test for overall effect: $Z = 3.50$ ($P = 0.0005$)

Total (95% CI) **100.0%** **0.82 [0.77, 0.89]**

Heterogeneity: $\tau^2 = 0.08$; $\chi^2 = 1635.68$, $df = 80$ ($P < 0.00001$); $I^2 = 95\%$

Test for overall effect: $Z = 5.26$ ($P < 0.00001$)

Test for subgroup differences: $\chi^2 = 0.63$, $df = 2$ ($P = 0.73$), $I^2 = 0\%$

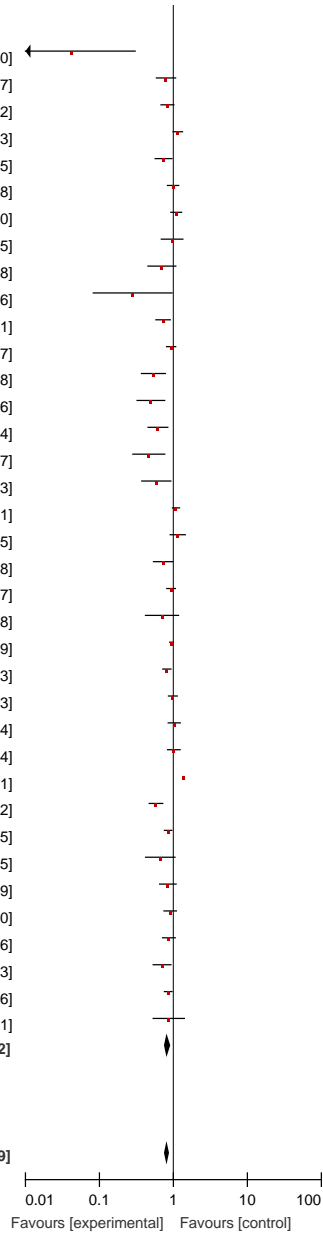
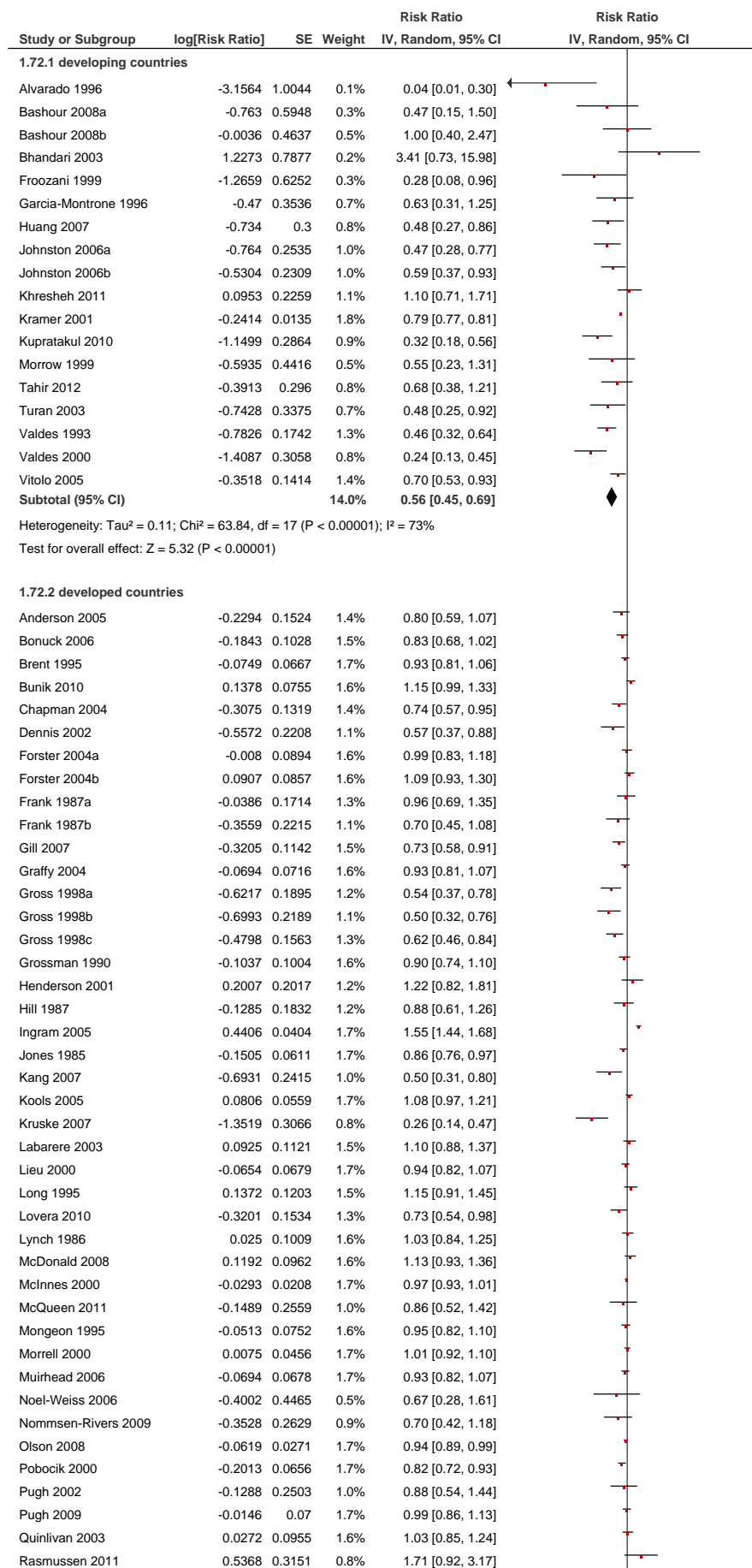


Figure 11c. Effect of breastfeeding education on the rate of no breastfeeding at 1-6 months: developing vs developed countries.



Redman 1995	0.0155	0.1	1.6%	1.02 [0.83, 1.24]
Reifsnider 1997	-0.2758	0.1796	1.2%	0.76 [0.53, 1.08]
Rishel 2005	-0.2757	0.4224	0.5%	0.76 [0.33, 1.74]
Rosen 2008	-0.4797	0.163	1.3%	0.62 [0.45, 0.85]
Rossiter 1994	-0.1207	0.0778	1.6%	0.89 [0.76, 1.03]
Ryan 2006	0.3211	0.0106	1.8%	1.38 [1.35, 1.41]
Schafer 1998	-0.5407	0.1075	1.5%	0.58 [0.47, 0.72]
Schlickau 2005a	-0.069	0.3357	0.7%	0.93 [0.48, 1.80]
Schlickau 2005b	-0.4745	0.4428	0.5%	0.62 [0.26, 1.48]
Sciaccia 1995	-0.6793	0.2693	0.9%	0.51 [0.30, 0.86]
Serwint 1996	-0.0248	0.0546	1.7%	0.98 [0.88, 1.09]
Shaw 1999	-0.1618	0.0585	1.7%	0.85 [0.76, 0.95]
Simonetti 2012	-0.4067	0.2343	1.0%	0.67 [0.42, 1.05]
Sjolin 1979	-0.1706	0.1312	1.4%	0.84 [0.65, 1.09]
Su 2007a	-0.099	0.099	1.6%	0.91 [0.75, 1.10]
Su 2007b	-0.1381	0.101	1.6%	0.87 [0.71, 1.06]
Wallace 2006	0.0409	0.0855	1.6%	1.04 [0.88, 1.23]
Wen 2011	-0.1596	0.06	1.7%	0.85 [0.76, 0.96]
Wilhelm 2006	-0.1044	0.1491	1.4%	0.90 [0.67, 1.21]
Wolffberg 2004	-0.2098	0.1676	1.3%	0.81 [0.58, 1.13]
Wrenn 1997	-0.1426	0.2476	1.0%	0.87 [0.53, 1.41]
Subtotal (95% CI)			86.0%	0.88 [0.82, 0.95]

Heterogeneity: Tau² = 0.06; Chi² = 928.57, df = 62 (P < 0.00001); I² = 93%

Test for overall effect: Z = 3.53 (P = 0.0004)

Total (95% CI)			100.0%	0.82 [0.77, 0.89]
-----------------------	--	--	---------------	--------------------------

Heterogeneity: Tau² = 0.08; Chi² = 1635.68, df = 80 (P < 0.00001); I² = 95%

Test for overall effect: Z = 5.26 (P < 0.00001)

Test for subgroup differences: Chi² = 15.69, df = 1 (P < 0.0001), I² = 93.6%

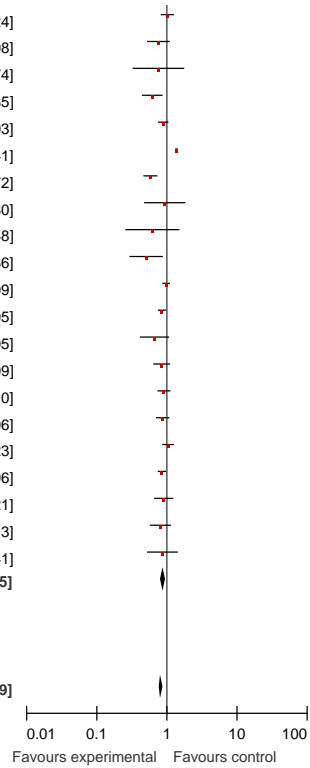


Figure 11d. Effect of breastfeeding education on the rate of no breastfeeding at 6-12 months.

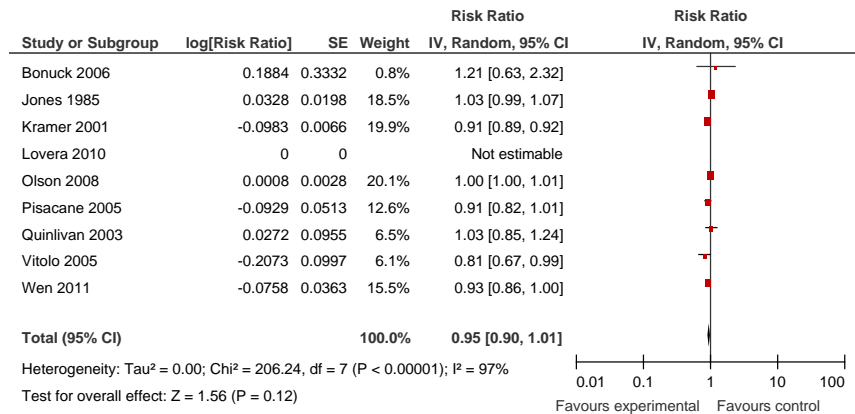


Figure 11e. Effect of breastfeeding education on the rate of no breastfeeding from 12 to 23 months.

