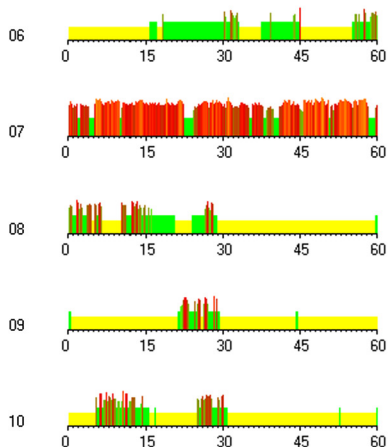
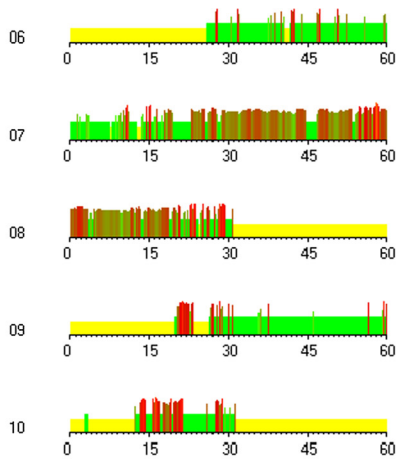


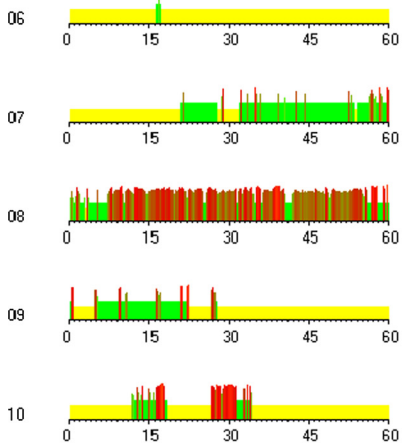
A. Student 2033. Active commuting to school started this weekday around 7:00 a.m. and ended it around 8:00 a.m.



B. Student 2108 at Monday. First lesson started at 8:30 a.m. Student reported in his/her diary going to school by bicycle this weekday.



C. Student 2108 at Friday. This weekday was excluded. First lesson clearly did not start at 8:30 a.m., but at 9:20 a.m. Notice this weekday started approximately 50 minutes (duration of one school lesson) later than at Monday (Figure 1b).



D. Student 2108 at Thursday. First lesson started at 8:30 a.m. Student reported in his/her diary going to school by car this weekday. Notice the large difference in amount of physical activity compared with Monday (Figure 1b).

