

Additional file 1. Flowchart of LTBI-screening and treatment process

Project team meeting

to determine best strategies to reach and motivate local Eritrean communities to participate in the LTBI education, screening and treatment program.

Strategy 1 "Personal invitation and social media"	Strategy 2 "Face-to-face promotion"	Strategy 3 "Dutch language classes"	Strategy 4 "Group housing"	Strategy 5 "Sport club"	Strategy 6 "Eritrean Church"
Education session* at local community center	Education session* at local community center	Education session* at the school	Education session* at the house	Education session* at sport club after training	Promotion of intervention after church service
LTBI screening on appointment at the PHS	LTBI screening 3 afternoons at the PHS	LTBI screening on appointment at the PHS	LTBI screening week night at the PHS (PHS 2) at the house (PHS 4)	LTBI screening during week night at the PHS	Education* + LTBI screening on appointment at the PHS

LTBI-screening by Medical Technical Assistants**

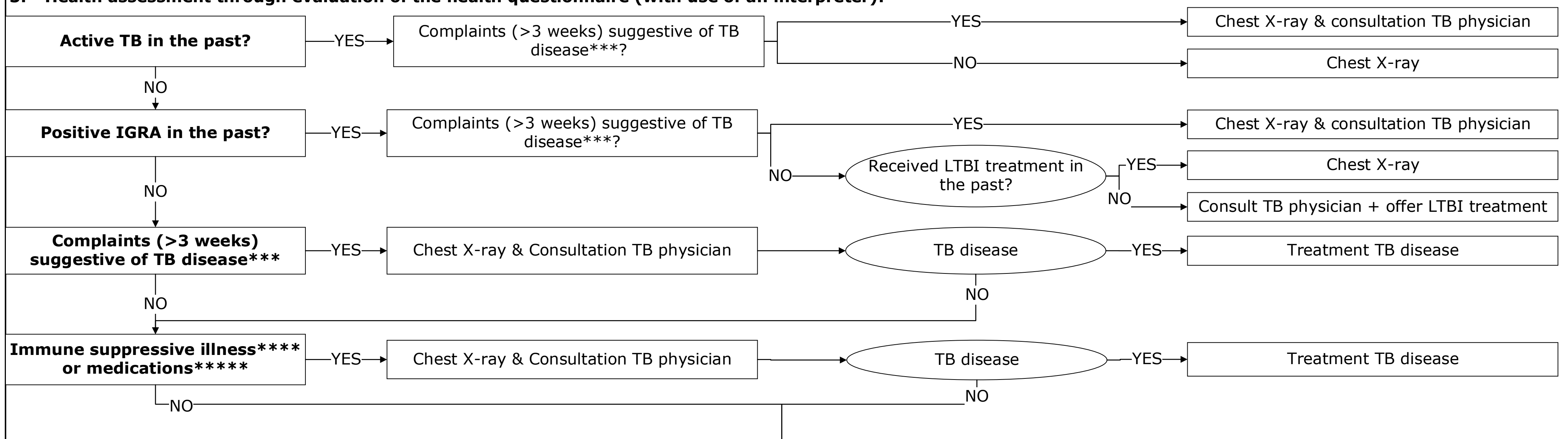
if necessary professional interpreters were used

1. Informed consent

2. Registration of the client

Check of personal information of client (name, ID number, birthdate, nationality, insurance number) on list against ID card and health insurance card

3. Health assessment through evaluation of the health questionnaire (with use of an interpreter):

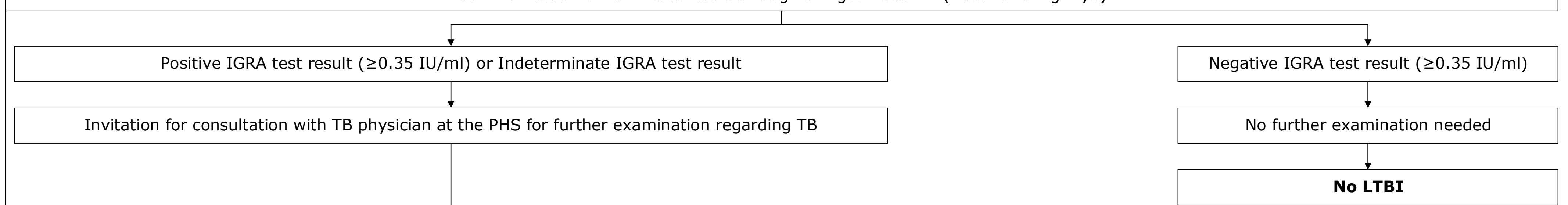


IGRA

LTBI testing was done with Interferon Gamma Release Assay (IGRA) using QuantiFERON-TB Gold Plus (QFT-Plus; Qiagen, Germantown MD) in accordance with the manufacturer's instructions

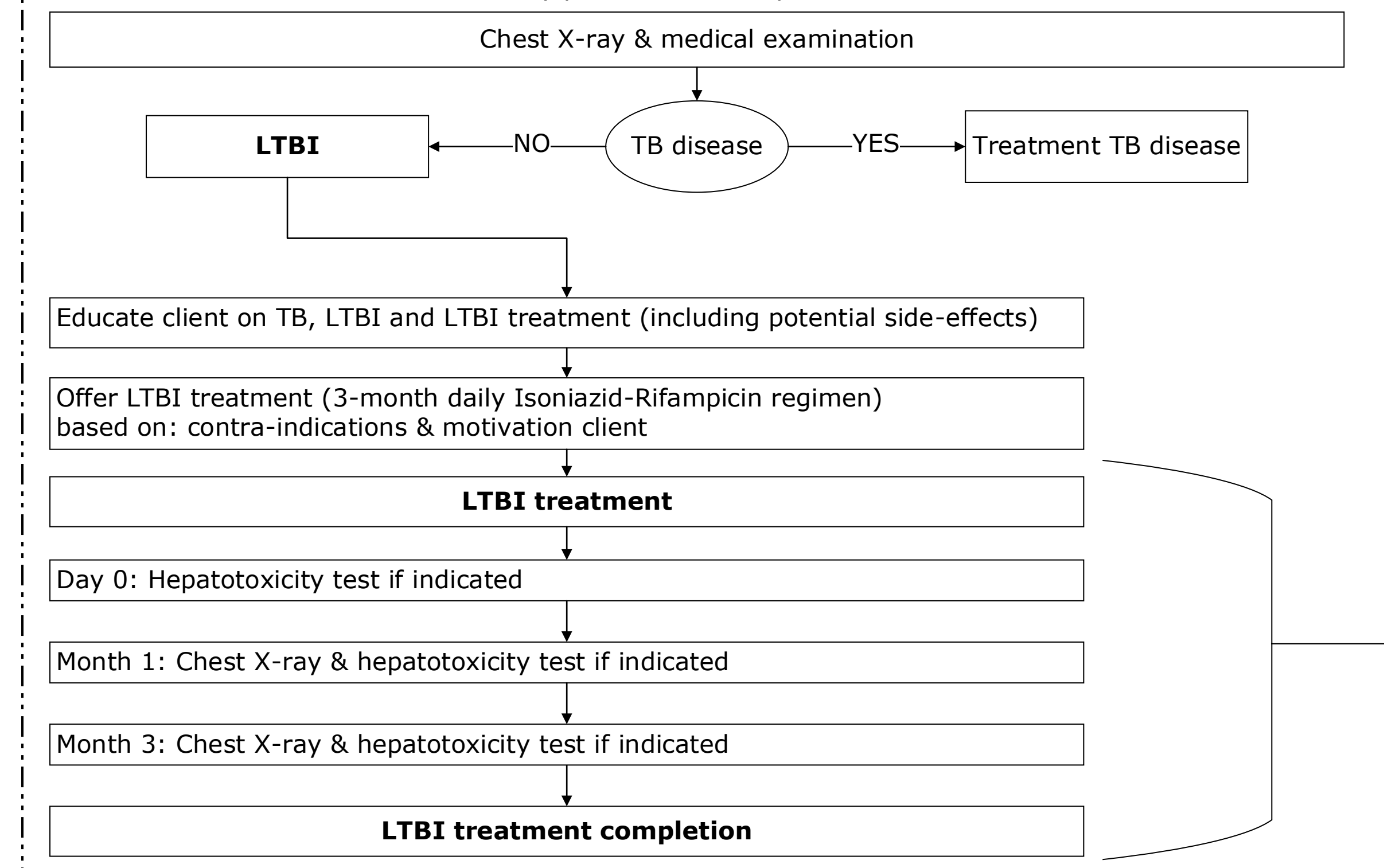
5. Communication of LTBI test results

Communication of IGRA test result through bilingual letter in (Dutch and Tigrinya)



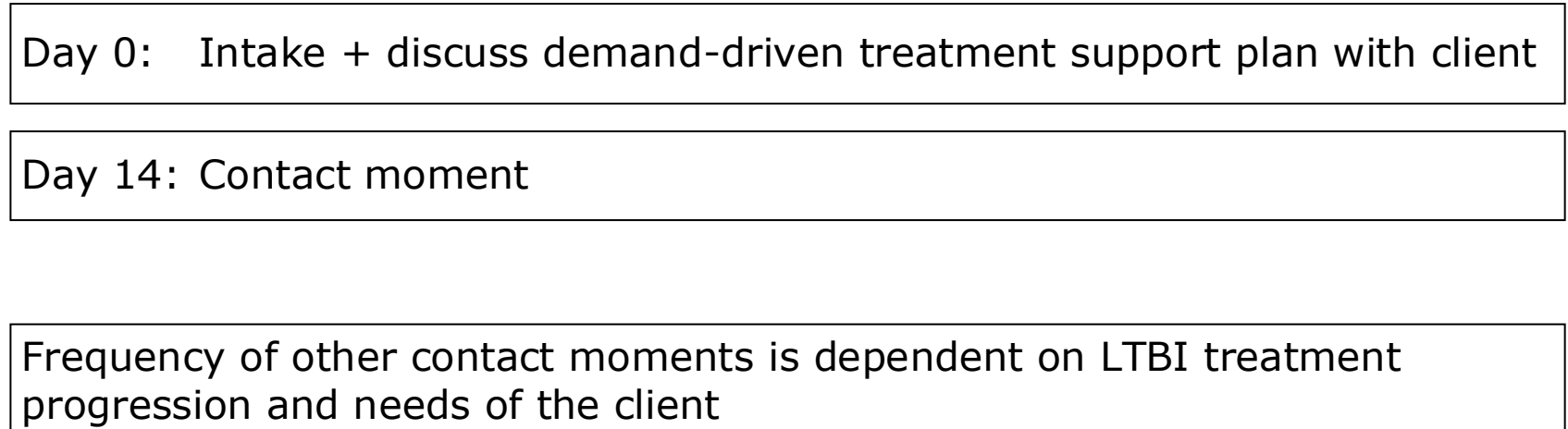
Consultation TB physician

if necessary professional interpreters were used



LTBI treatment support by TB nurse

if necessary professional interpreters were used



ID card identification card, IGRA Interferon Gamma Release Assay, LTBI latent tuberculosis infection, PHS Public Health Service, TB tuberculosis

*Culture appropriate education on TB, LTBI (including cause, symptoms, transmission, diagnostics and treatment) given by trained Eritrean key figures in Tigrinya

** Medical Technical Assistants (MTA), healthcare assistants trained to perform TB screening activities (symptom screening, tuberculin skin test and chest X-ray), BCG vaccination, to give information on the scope of the screening and TB in general and to document screening results and to perform specific administrative tasks.

***Complaints: Cough, fever (>38 degrees Celsius), night sweats, poor appetite / weight loss

****Immune suppressive illnesses: Inflammatory bowel disease, kidney failure / dialysis, diabetes, HIV/AIDS, cancer, organ transplantation, psoriasis, rheumatism, sarcoidosis, silicosis

*****Immune suppressive medications: Prednisone / Dexamethasone / Methotrexate, TNF-alpha blockers (biologicals), cancer medication, medication following organ transplantation