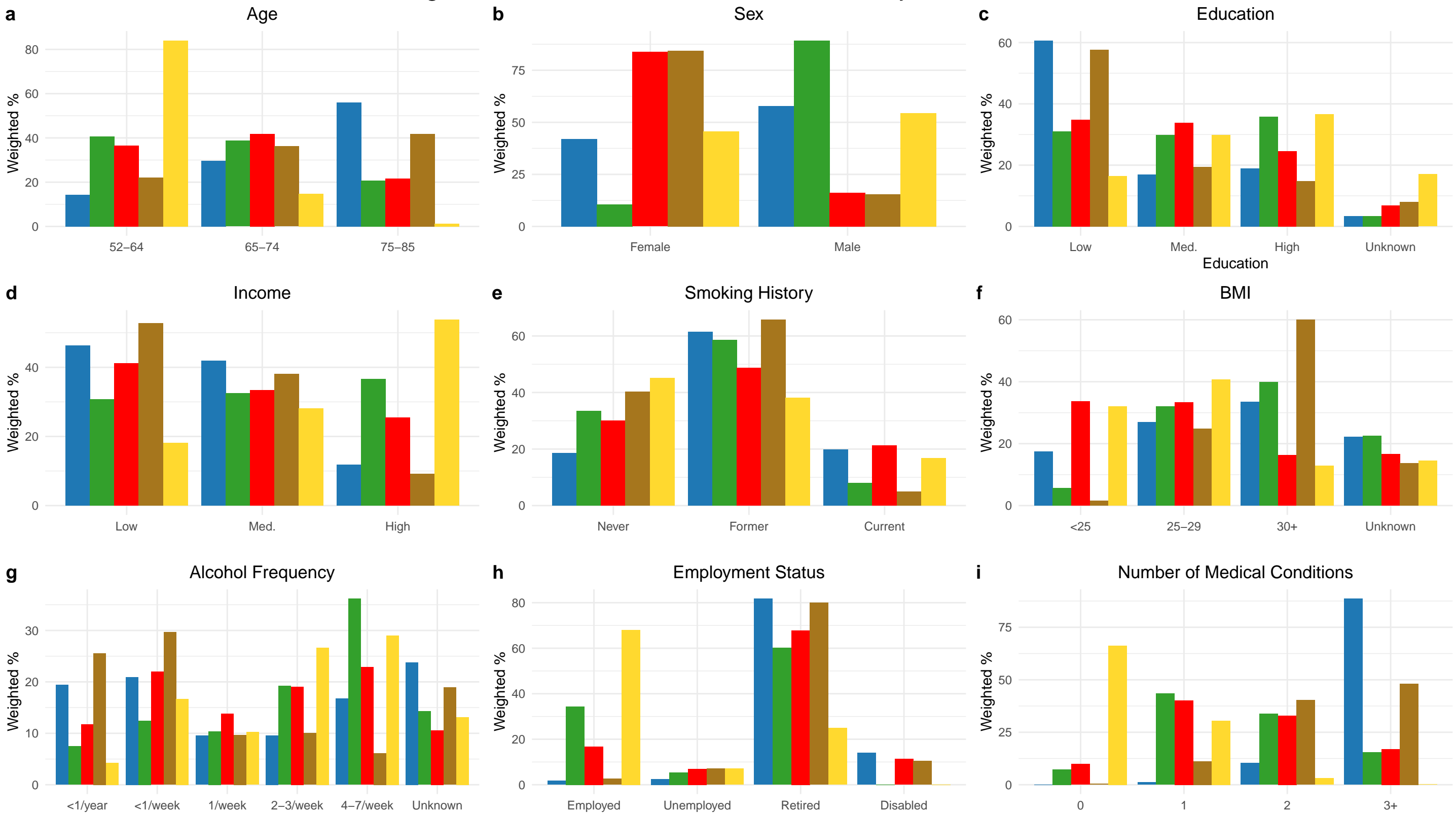


# England Breakdown of Disease Patterns by Risk Factors



■ Group 1: High Probability of Disease
 ■ Group 2: Metabolic, Arthritis
 ■ Group 3: Osteoporosis, Arthritis, Hypertension, Psychological(Female)
 ■ Group 4: Metabolic, High Prob. Arthritis
 ■ Group 5: Low Probability of Disease