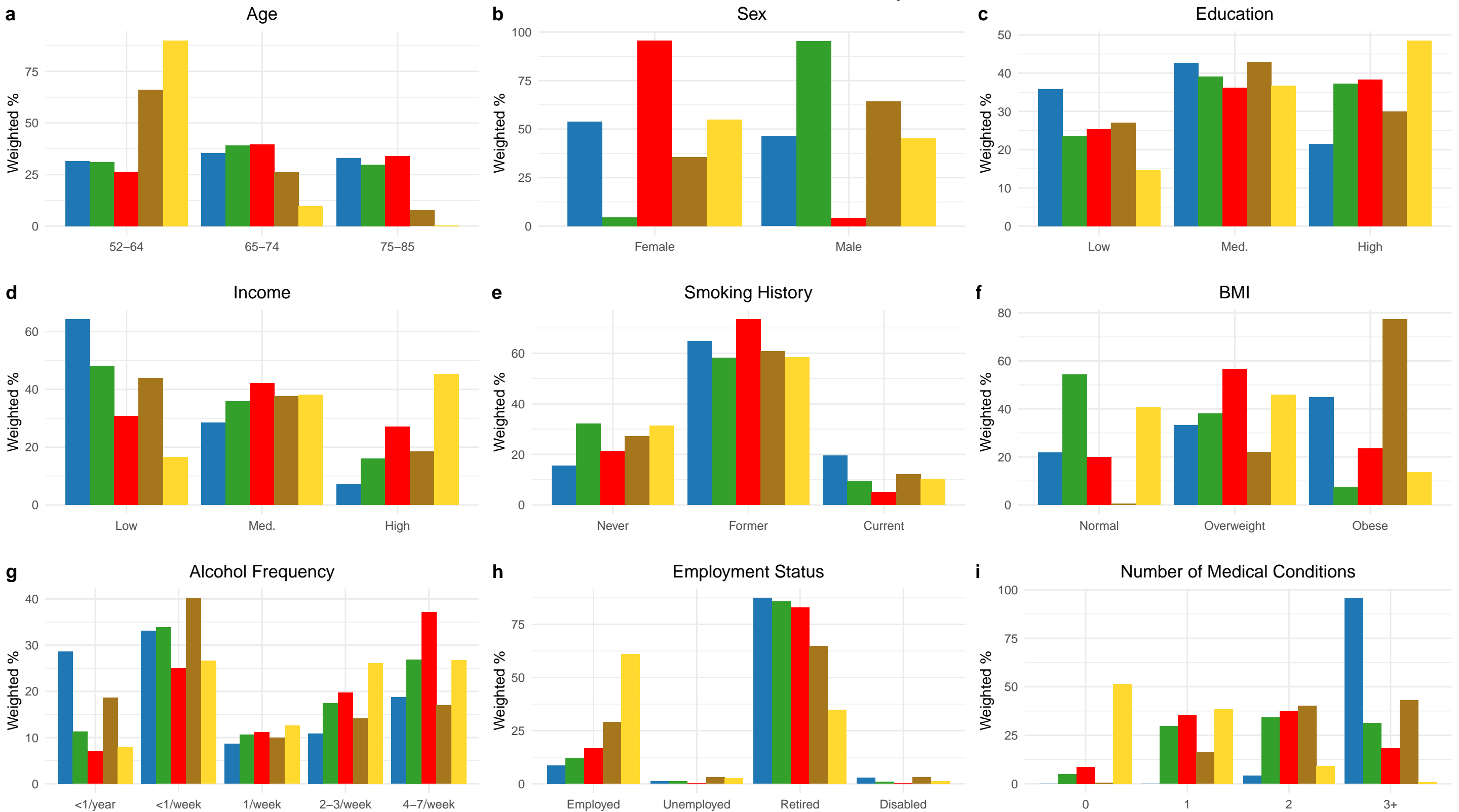


Canada Breakdown of Disease Patterns by Risk Factors



- Group 1: High Probability of Disease
 - Group 3: Osteoporosis, Arthritis, Hypertension, Psychological, Cancer (Female)
 - Group 5: Low Probability of Disease
- Group 2: Metabolic, Arthritis, Cancer
 - Group 4: Metabolic, Arthritis, Psychological